

# Methodist College Today

## *A Banner Year*



*For Methodist*

*1998 Annual Report*



---

# TOP TEN NEWS STORIES of 1998

- 1 Construction of Clark Hall and Annex to Davis Memorial Library
- 2 Fall '98 Enrollment Reaches All-Time High of 1,972
- 3 Expanding the Vision Campaign Passes \$8.7 Million Mark
- 4 Physician Assistant Program Graduates First Class and Wins Accreditation
- 5 PGA of America Endorses Golf Management Program
- 6 Residence Halls Connected to MC Net and the Internet
- 7 B. F. Stone Lyceum and B. F. Stone Student Lyceum Inaugurated
- 8 Student Debaters Daniel Charpentier and Greg Thomas Win ADA Novice National Championship
- 9 Men's, Women's Golf Teams Win National Championships
- 10 MC Athletic Hall of Fame Inducts Inaugural Class



## THE STAFF

Bill Billings '68, *Editor*  
Summer Brock, *Alumni Editor*  
Matt Eviston, *Sports Editor*  
Scott Galayde, Caroline Kearns '93,  
Bill Billings, *Photographers*  
Angela Cunningham, *Graphic Designer*  
Danielle Crawford, *Typographer*  
Jay Dowd, *Vice President for Institutional  
Advancement*

## ALUMNI ASSOCIATION OFFICERS

Lynn Carraway '71, *President*  
Bryan May '92, *1st Vice President*  
Larry Philpott '73, *2nd Vice President*  
Lynne Smith '86, *Secretary*  
Janet Mullen '72, *Immediate Past President*

## ALUMNI ASSOCIATION DIRECTORS

Johnny Lipscomb '68, Paula Adams '78,  
Sylvia Tartt Boland, '82, Nona Fisher '88,  
Trudi Jaber Waters '70, Jerry Monday '71, Kim  
Lovely Johnson '95, Margaret F. Pope '78,  
Rhonda Etherden '79, Rebecca Strickland '78,  
Elaine Marshall '83, Tom Maze '93, Michael  
Stone '93, George Small '85, Shelia Yates '84,  
Wendy Johnson '89, Camellia Dunn '70,  
Gordon Dixon '66, Jamie Justice '94,  
Lynley Asay '94.

## ABOUT THIS MAGAZINE

*Methodist College Today* (USPS 074-560) is published four times a year (Spring, Summer, Fall and Winter) as a service to members of the Methodist College community and Methodist College alumni, by the Public Relations Office and the Alumni Office of Methodist College, 5400 Ramsey Street, Fayetteville, NC 28311. Periodicals postage paid at Fayetteville, NC 28302-9651 and other additional entry offices. Postmaster: Send address changes to:

### *Methodist College Today*

5400 Ramsey Street  
Fayetteville, NC 28311-1420

*Methodist College Today* is produced with PageMaker software on a Power Macintosh computer. Circulation: 15,000 copies.

Printed by The Highland Press, Inc.,  
Fayetteville, N.C.

# Methodist College Today

## 1998 Annual Report

### In This Issue

VOLUME 40, NO. 1 SPRING '99

Pages 2-4	Message from the President
Page 5	Academic Affairs
Pages 6-7	Student Life
Page 8	Business Affairs
Page 9	Institutional Advancement
Pages 10-25	Annual Giving Report
Pages 26-27	Alumni Association
Page 28	Athletics
Page 29	Enrollment Services
Page 30	Church Relations
Pages 31-32	Strategic Plan for 2000-2005

### About This Issue

#### *A Banner Year*



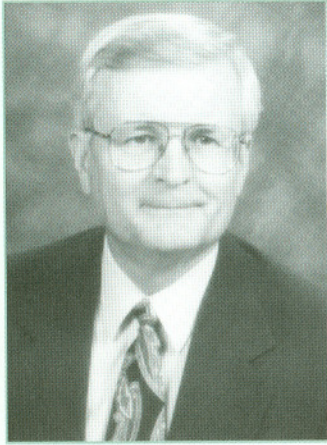
Methodist College carried many banners in 1998 and it carried them well. In all areas — but particularly in enrollment, campus improvements, programs, and planning — 1998 was indeed *A Banner Year For Methodist College!* This is a fitting theme for our *first* Annual Report.

#### *For Methodist*

Methodist College does not discriminate on the basis of age, race, sex, national or ethnic origin, religious denomination, or disabilities for otherwise qualified persons in the administration of its admission, educational policies, scholarships, loan programs, athletics, employment, or any other college-sponsored or advertised programs.

Methodist College is related by faith to the North Carolina Annual Conference, Southeastern Jurisdiction, The United Methodist Church. It is an independent corporation rather than an agency of the Conference and is responsible for its own debts and obligations.





*We have a  
Special  
Mission!*

**I**n the field of private higher education, Methodist College is unique. As our motto, "Truth and Virtue," suggests, the spiritual growth of our students is very important to us. In our mission statement, we say that Methodist College nurtures moral values and ethical decision-making.

Today more than ever, this part of our mission poses a major challenge. In an increasingly secular world, many individuals are self-absorbed and indifferent to the needs of others. Our challenge at Methodist is to lead students in the other direction. We require our students to take two religion courses as part of their liberal arts core. We have an Honor Code. Policies for staff and students clearly define what is morally acceptable and what is not. A full-time campus minister seeks to help students and staff grow spiritually. We encourage staff and students to be good role models and to do mission and volunteer work whenever possible.

I believe it is precisely because we aim to be different that Methodist College is growing. I believe the vast majority of our staff, students, and alumni are committed to doing what is right and honorable. When you offer a high quality liberal arts education in a Christian setting, you can't lose! When our graduates go forth, we can rest assured they will do good things and work hard to build a better world.

As this annual report will clearly show, 1998 was indeed a "banner year" for Methodist College. Great strides were made in the areas of enrollment, campus improvements, programs, and planning. I am grateful for the hard work and dedication of our staff and students. I am thankful for the generous support we have received from trustees, alumni and friends.

On behalf of the entire Methodist College family, I offer my heartfelt thanks to all who have embraced our mission, With your continued support and God's help, I look forward to even greater accomplishments in the future.

Sincerely yours,

M. Elton Hendricks  
President





YOU must be the change you wish to see in the world.  
— GHANDI

## FROM the PRESIDENT

**D**r. M. Elton Hendricks will complete his sixteenth year as president of Methodist College this September.

In a recent interview for this "Annual Report," he reflected with pride upon the progress made at Methodist during 1998—what made it "a banner year" for Methodist College.

"I think our three most important achievements were the construction of Clark Hall and the library annex, record enrollment, and completion of the "Expanding the Vision" campaign with over \$8.7 million raised," he said.

Advances in academics, student life, athletics and other areas are detailed in subsequent sections of this report.

The following are highlights of the interview with President Hendricks.

**Question:** If someone gave Methodist an unrestricted gift of \$10 million, how would you recommend that it be used: to pay off debt? to fund scholarships? to grow the endowment?

**Answer:** Our debt (about \$9 million) is at a very low interest rate. Part would go to financial aid and part to grow the endowment. We would want to improve technology and equipment on the campus. I might use part of it for new physical facilities. We need a new science building, a theater, and a physical fitness center.

**Question:** If College Centre (office park) develops as planned and the Methodist College Development Corporation is able to donate large amounts of lease revenues to the college, how do you feel these should be used?

**Answer:** It will be a number of years before this happens. I think the exact use of these funds will have to be decided in the future by the administration and trustees.

**Question:** Is there a possibility the college will offer graduate programs in the future?

**Answer:** We'll continue to look at this, but graduate programs are expensive and would have to be self-supporting. But if someone were to endow a graduate program, I'd have the tractors running tomorrow.

**Question:** How close are we to building another residence hall?

**Answer:** We've visited residence halls at other colleges, and our Strategic Plan recommends adding 150 residential spaces. But the trustees will decide how and when we do this.

**Question:** What do you envision for the undeveloped southeastern part of the campus, near the Fayetteville Area Soccer Complex?

**Answer:** This is a wooded area which we may want to have as greenspace. It looks like the city's hiking and biking trail along the Cape Fear River will likely end there. The trustees have been asked to give a 25-year easement for this purpose.

**Question:** The enrollment at Methodist has doubled during your presidency. How large should the college become?

**Answer:** With 1,300 day students and 700 living on campus, we're still a small college. I expect us to continue to grow, but I'm committed to the small college atmosphere, and I don't think 2,000 students would change that.

**Question:** It has said that the original trustees chose "Methodist College" as a temporary name. Under what circumstances would you favor a name change for the college?

## ACHIEVEMENTS of 1998

- *Margaret and Walter Clark Hall, which opened in January, is now home to the Reeves School of Business. It contains classrooms, offices, a computer lab and the 140-seat Yarborough Auditorium.*
- *The annex to Davis Memorial Library, due for completion in May, will include a new entrance and circulation desk, new space for the reference section and computer-based research materials, more work space and office space for the library staff, a custom-designed special collections room, and a new electronic automation system for cataloguing and circulation. In addition, the exterior features a striking semicircular entrance plaza.*
- *Enrollment for the 1998 summer and fall semesters reached record-high levels. The fall figure of 1,972—1,332 in the day program and 640 in the Evening College—was the largest in the history of the college.*
- *The four-year "Expanding the Vision" campaign concluded with gifts and pledges of \$8.7 million, exceeding the original \$6.5 million goal by more than \$2.2 million.*



Answer: The name of the college will be determined by the trustees. I believe the trustees would not object to having the Duke University experience, when Trinity College became Duke University on the basis of a very large gift. For an adequate gift from a reputable source, I believe the trustees would allow someone to name the college. I think there's a good chance that twenty-five years from now, Methodist College will be known as something else. I know the Admissions Office thinks "Methodist College" is a burden, but we continue to have record enrollment. I'm sure there are some who choose us because of our church relationship. I'm not anxious to change the name, but I'm willing to do it for the right reason.

**Question:** As you look back at your fifteen and a half years as president of Methodist College, what pleases you the most or gives you the most pride?

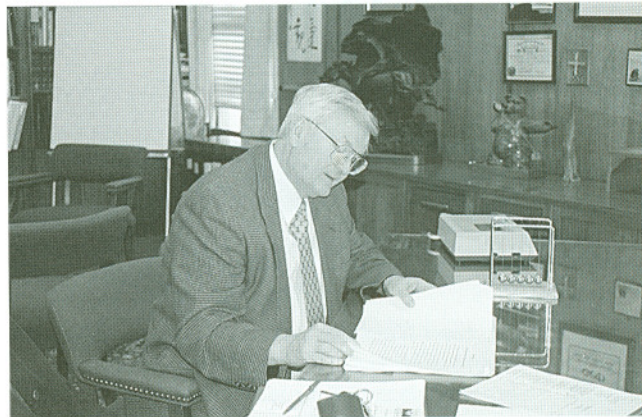
Answer: I've enjoyed my relationship with the faculty, the staff, the students, and the people of Cumberland County. I could not imagine having spent the last fifteen years in a more exciting way. I'm pleased that the college has a better image and reputation and more visibility. I'm pleased that our enrollment has grown and that our financial situation and facilities have improved.

**Question:** If you could make one wish for Methodist College and have it granted, what would it be?

Answer: I wish we had the scholarship resources so that everyone who wanted to attend Methodist College could do so. There are many people who would benefit from a Methodist College education and would like that experience, but they don't have the resources and we don't have the scholarship aid for them.

## ONGOING GOALS for the President

- Operate the college in a fiscally responsible manner
- Lead the college so as to improve the quality of the programs at the college
- Lead the college in a way that its visibility and reputation are improved
- Nurture and support a positive relationship between the college and the North Carolina Conference of the United Methodist Church
- Conduct a program for his own personal, intellectual, and professional growth
- Assist the Board of Trustees in establishing appropriate long-range plans and lead the college in maintaining and regularly updating such plans that deal with the fiscal status, academic programs, and the physical facilities of the college



President Hendricks reviews a final draft of the Strategic Plan for 2000-2005.



Dr. Hendricks talks with Methodist College Alumni currently serving as United Methodist Ministers in the North Carolina Conference.



Jerry and Elton Hendricks celebrated their 40th wedding anniversary Aug. 30, 1998.





# ACADEMIC AFFAIRS

SOME MEN see things as they are and say "Why?"  
I see them as they never were and say "Why not?"  
— ROBERT F. KENNEDY

The Academic Affairs area realized a myriad of major advances during 1998. These advances included a dedication of a new academic building, book signings by Methodist College professors, graduation of the first physician assistants, and accreditation of several degree programs. This has been a year to be proud.

Margaret and Walter Clark Hall, which serves as a wonderful facility for our students and faculty, was completed in December. It now houses the Reeves School of Business. The library annex now under

construction is scheduled for completion in May 1999. This new facility will double the library's present capacity and will provide many new opportunities for students and faculty.

During 1998, five Methodist College faculty members were recognized for the publication of books. At a book signing event co-sponsored by Methodist College

and Barnes and Noble, Dr. Richard Walsh, Dr. Mary Wheeling, Dr. JoAnn Parkerson, Dr. Lloyd Bailey, and Dr. Norman Wilson were featured. This speaks well of our faculty.

tion of America. The Professional Golf Management Program was also recognized for its excellence by receiving accreditation from the Professional Golfers Association. The Sports Medicine program is currently preparing documents for submission for the accreditation process in year 2000. Work continued throughout 1998 in preparation of the reaffirmation of accreditation visit in April 1999 by the Southern Association of Colleges and Schools, which will evaluate the excellence of the entire institution.

The Academic Development Center has added a professional advisor to its staff, assigned to the Professional Golf Management Program. The advisor teaches two sections of IDS and advises the freshmen enrolled in PGM. A second advisor is proposed for the 1999-2000 academic year and will have the responsibilities for teaching two IDS sections and advising those freshmen who are undecided about their major field.

An Honors Program was developed under the leadership of Dr. Richard Walsh. The Methodist College Honors Program has a two-fold vision: (1) to enhance students' liberal arts education by immersing them in The Great Books, as a supplement to their core, and (2) to correlate this classical education with their majors. The students not only receive more personal, specialized training, but also receive excellent preparation both for graduate school and the marketplace.



Dr. Tony DeLapa, vice president for academic affairs, reviews SACS Self-Study Report with Dr. John Sill, chair of the SACS Steering Committee.

and Barnes and Noble, Dr. Richard Walsh, Dr. Mary Wheeling, Dr. JoAnn Parkerson, Dr. Lloyd Bailey, and Dr. Norman Wilson were featured. This speaks well of our faculty.

At the May 1998 commencement, the Physician Assistant Program graduated its first class of four. This program has been welcomed by the medical community in southeastern North Carolina and will undoubtedly increase in the years ahead. The program continues to grow, and enrollment of future PA candidates noticeably increases everyday.

The Methodist College Teacher Education Program received reaffirmation of its accreditation by the North Carolina Department of Public Instruction and the National Council for the Accreditation of Teacher Education. The Physician Assistant Program received full accreditation by the Commission on Accreditation on Allied Health Education Programs, an accrediting body of the American Medical Association.

## SELECTED GOALS for 1999

- Continue work toward accreditation of the Sports Medicine Program.
- Continue to assist students in achieving academic success and in progressing toward graduation by providing needed support through the faculty advising system, the Academic and Social Success Program, IDS classes, and the Writing Center.
- Provide additional electronic research services in the new annex to Davis Memorial Library and incorporate the Teaching Materials Center into the main library.
- Continue to challenge and assist student athletes in setting academic priorities.



# STUDENT LIFE

MY MOTTO as I live and learn, is dig and be dug in return.  
—LANGSTON HUGHES

Last year-1998-was full of both challenges and accomplishments for the Department of Student Life. Our achievements have come in many areas, but the one thing they have in common is that all have resulted in improved service to students.

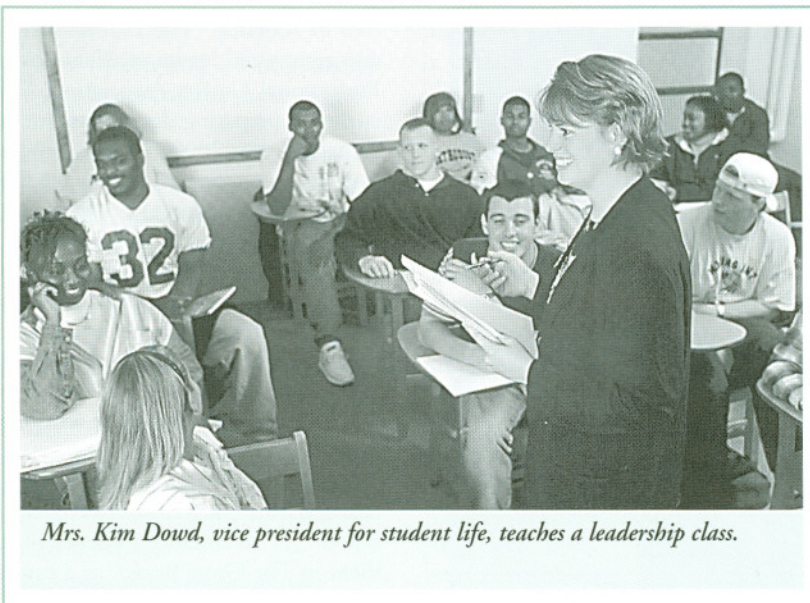
Participation by students, faculty and staff in community service increased in 1998. More students are participating in community service both on and off campus than ever before, and more student organizations are getting involved in such efforts as well. Campus-wide community service projects, such as Show You Care Day and the woodcutting project, averaged 120 participants each.

The residence life program is thriving as well. To give students more ownership in their residential community, the Residence Hall Association (RHA) was formed. RHA hit the campus by storm, winning numerous state and regional awards in its first year of existence as well as contributing to an improved quality of life on campus. A Community Resource Desk was created in order to expand the types of services as well as hours those services are offered to residential students. Through the Community Resource Desk, students can check out games, VCRs, Sony Play Stations, and various cleaning supplies and they can purchase snacks from a convenient location in Weaver Hall. The Department of Residence Life also developed a Code of Ethics in 1998 and designed training sessions on ethics for paraprofessional and professional staff.

Career Services was able to expand its services with the purchase of a new computerized career assessment program. A Career Services Advisory Committee – comprised of faculty and staff – was created to brainstorm ways of improving services for students. The number of freshmen visiting the Career Center to set up files increased by 62% this year.

An additional physician assistant was added to the Health Services staff this year, which has improved delivery of services. New slides and videos for educational programming were purchased. We've also expanded the types of lab testing we're able to do "in house."

The Public Safety Department counts among its accomplishments expansion of community policing efforts through the establishment of a bike patrol, partnerships developed with various student organiza-



*Mrs. Kim Dowd, vice president for student life, teaches a leadership class.*

tions, and crime prevention classes given to all first-year students. Public Safety equipment and computer technology was also advanced, resulting in improved efficiency and customer service. Training experiences for officers were encouraged, and two officers gained the qualifications needed to serve as Law Enforcement Instructors. Two officers also completed the requirements to become Field Training Officers.

The Cheerleading and Dance programs continue to maintain national prominence. The Cheerleading

Team finished 3<sup>rd</sup> in the nation at the NCAA Division II and III National Cheerleaders Association Collegiate National Champion-

## IMMEDIATE GOALS for 1999

- To provide programs which assist students in reaching their personal and professional goals
- To create an interpersonal and supportive environment which facilitates the processes of individual and community development
- To challenge students' attitudes and beliefs about themselves and the world around them in an effort to stimulate holistic development
- To maintain integrity and fairness in working with students, faculty and other staff





ships. The team also earned a No. 2 ranking and a paid bid for the 1999 National Cheerleading Championships. The Dance Team earned a bid to compete in the Universal Dance Association College Dance Team National Championships. They finished 14<sup>th</sup> of 32 teams in the competition, which included teams from all NCAA divisions.

Participation continues to increase in campus recreation and intramural events. Four additional outdoor adventure trips were planned in 1998, resulting in an average of two per month. Outdoor adventure trips ranged from snow skiing to white water rafting to canoeing to camping to mountain climbing. Improvements were also made in the "tin gym" facility. The number and variety of other student activities were also expanded. An average of at least one activity per week was offered, ranging from comedians to movies to concerts to hypnotists and other novelty acts.

Counseling and Psychological Services experienced an increase in the number of students utilizing their services. The peer counselors program was expanded and currently twenty students serve as peer counselors. A relationship series – Battle of the Sexes – was implemented, through which students discuss various issues related to relationships with members of the opposite sex. Through the Alcohol and Other Drug Task Force the alcohol/other drug policies were revised to include more of an emphasis on education and prevention programs.

The Religious Life program continues to provide opportunities for students, faculty and staff to engage in worship, study, fellowship, prayer and service. A Fall Break Mission Trip was sent to Currituck, NC, to assist in Hurricane Bonnie relief efforts. The Christian LYFE Council, the student leadership team in campus ministry, was reorganized to maximize student involvement. In addition, a weekly faculty/staff prayer breakfast was implemented.



Lynne E. "Sissy" Sink takes advantage of the Teacher's Job Fair.







# BUSINESS AFFAIRS

DISCOVERY consists of seeing what everybody has seen, and thinking what nobody else has thought.  
— ALBERT VON SZENT GYORGY

**M**ethodist College completed construction of the Walter & Margaret Clark Hall, an academic classroom facility with eight classrooms, ten offices, and a 150 seat auditorium. The total square footage is 10,500.

A brick sidewalk to the lower athletic complex was completed which will provide students with a safe walkway. Two new asphalt parking lots (with approximately 100 spaces) will provide excellent parking for the tennis, golf, softball, baseball, football practice and intramural programs.

Thirty rooms on the third floor of Cumberland Hall were completely refurbished with new furniture. The patios of

Cumberland Hall, Sanford Hall, Garber Hall and Weaver Hall were furnished with new plants.

Internet cable was installed in all academic buildings and residence halls, which will bring direct Internet access to the residential students, faculty and staff.

A new entrance at Stacy Weaver Drive designed to serve the College Centre (office park) is under construction and scheduled to be completed in the Spring 1999.

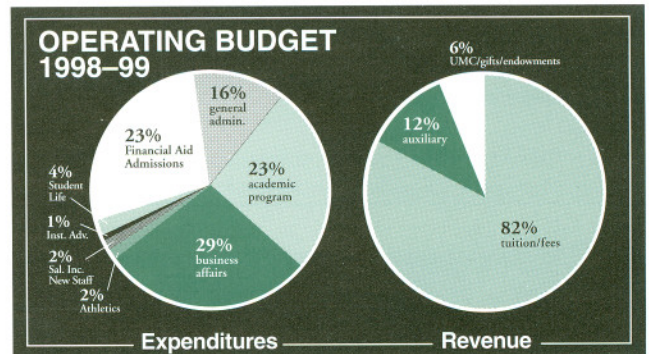
The Business Office was restructured to better serve students by providing more privacy and comfort.

The college was able to get a bond modification which reduced our interest rate, and will save the college \$115,000 over the next five years.

Methodist College had an excellent 1997-1998 audit with a surplus in the current operating funds.



Mr. Gene Clayton, vice president for business affairs, visits with Breeden Blackwell and other local residents at a Fayetteville Chamber of Commerce Coffee Club breakfast hosted by Methodist College.



Methodist's operating budget for 1998-99 is \$20.4 million

## BUSINESS GOALS for 1999

- Complete construction of the library annex in the Spring of 1999.
- Develop and construct new residence facilities for 150 students over the next three years.
- Completely renovate 49 rooms including the second floor of Cumberland Hall and the first floor of Weaver Hall. This will also include new furniture.
- Complete construction of the Stacy Weaver Drive entrance into College Centre.
- Install back rests for the seats in the football stadium, along with steps and handrails.
- Plan and implement a new driveway system to allow some of the current streets to become walkways.





# INSTITUTIONAL ADVANCEMENT

NOTHING great was ever achieved without enthusiasm.  
— RALPH WALDO EMERSON

The *Expanding the Vision Campaign* concluded in 1998, securing more than \$7.7 million in gifts and pledges plus another \$1 million from other sources. The original goal was \$6.55 million, which was exceeded by \$2.2 million!

The College's endowment continues to grow, but there is a pressing need to secure more gifts via wills, bequests, trusts and other types of charitable estate gifts. It is essential that the College ease the burden of being tuition-dependent and growing our endowment is one way to achieve this.



Vice President for Institutional Advancement Jay Dowd (center) gets a scouting report from M C Baseball Coach Tom Austin (left) and Assistant Coach Jim Peeples.

The Office of Institutional Advancement strives to find ways to increase awareness of the many fine things found at Methodist College. Materials in the works are:

- an endowed scholarship guide designed to increase scholarship awareness and giving
- attractive, user friendly and up-to-date Web pages
- a general information brochure
- a targeted brochure describing ways one can invest in the College

We continue to enhance our quarterly magazine, *Methodist College Today*, which reaches more than 15,000 alumni and friends four times a year; press releases; social events; advertising; *The Pride* (student newspaper); and the *Carillon* (year-book).

Internally, this office continued to work closely with the Athletic Department to begin the Athletic Hall of Fame and to increase membership in the Monarch Booster Club. This is but one example of our partnerships with organizations and clubs all over campus. Another is the new Student Alumni Association which we recently formed to educate current students about the importance of becoming loyal alumni.

## IMMEDIATE GOALS for 1999

- Increase alumni giving from 17 percent to 20 percent by the year 2000
- Enhance the College's presence on the World Wide Web
- Improve communication between the College and the donors of endowed scholarships
- Begin and effectively market a planned giving program to increase the College's endowment
- Expand the number of students actively participating in student publications

The success of the Advancement Office is due, in large part, to the many volunteers who commit their time and resources to our efforts. Thanks to all who supported us in 1998 and we look forward to another fantastic year.





# DESIGNATED GIFTS

FROM what we get, we can make a living;  
what we give, however, makes a life.  
— ARTHUR ASHE

## ANNUAL FUND GIFTS

Gifts to the Annual Fund provide vital support for current operating expenses related to academic programs, faculty salaries, library acquisitions and daily college operations.

\$367,706

## RESTRICTED ANNUAL GIFTS

Restricted gifts supplement programs with specific departments and scholarships. The monies reported this year include the funds raised in 1998 for the *Expanding the Vision* campaign.

\$1,780,666

## TOTAL GIFTS TO METHODIST COLLEGE IN 1998

Alumni	\$ 128,238
--------	------------

Parents	21,245
---------	--------

Friends	657,295
---------	---------

Corporations and Foundations	865,666
------------------------------	---------

United Methodist Church	431,633
-------------------------	---------

Faculty/Staff	32,690
---------------	--------

Independent College Fund	39,295
--------------------------	--------

Other	5,100
-------	-------

# \$2,148,372





## TRUSTEES ASSOCIATES

\$10,000 AND ABOVE

Belk  
Branch Banking & Trust Company  
Broadwell Land Company  
Cape Fear Feed Products  
Carolina Power & Light  
Mrs. Margaret Clark  
Crowell Constructors, Inc.  
Cumberland Community Foundation  
Estate of B. F. Stone  
Fayetteville Publishing Company  
First Citizens Bank & Trust Company  
The Florence Rogers Charitable Trust  
Haigh, Byrd & Lambert  
Independent College Fund  
Dr. J. Wesley Jones  
The Kresge Foundation  
Mr. Ray Manning  
Mr. David R. Nimocks, Jr.  
North Carolina Conference UMC  
Estate of Frances Sharpe Queen  
Mr. Samuel C. Rankin  
Mrs. March F. Riddle  
Robert P. Holding Foundation  
Mrs. Margaret Rose Sanford  
Short Stop Food Mart  
Dr. and Mrs. Frank Stout  
Sir John M. Templeton  
Mr. Joe W. Walker  
Mr. and Mrs. Harvey T. Wright, II  
Mr. and Mrs. John W. Wyatt  
Mrs. Mary Yarborough  
Mr. and Mrs. Ramon L. Yarborough

## PRESIDENT'S SOCIETY

\$1,000 - \$9,999

AAA Glass Company  
Abbott Laboratories Fund  
Alabama Supreme Court & State Law Library  
Dr. and Mrs. Grant L. Alleyne  
American Honda Motor Co., Inc.  
Dr. and Mrs. Christopher T. Aul  
The Reverend James A. Auman  
Mr. and Mrs. Von Autry, Jr.  
Mr. Frank Barragan, Jr.  
Mr. W. A. Bissette  
LTC Mildred E. Blackwell, USA (Ret.)  
Dr. Mott P. Blair  
Mr. James A. Bledsoe  
Mrs. Appie W. Bolton  
Mrs. Linda B. Bourland  
Mr. William Bowman  
Briggs & Sons Tire  
Mr. Charles Broadwell  
Mr. Dennis L. Bruce  
Bryan Pontiac-Cadillac Company  
Bullard Furniture Company  
Mr. Jesse H. Byrd, Jr.  
Mr. Chris Cammack  
Cargill, Inc.  
Cashwell Appliance Parts, Inc.  
Cavin's Business Solutions  
Mr. Cermette J. Clardy, Jr.  
Dr. Theresa P. Clark  
Mr. and Mrs. Gene Clayton  
Coca-Cola Bottling Company  
Cooke Foundation  
Mr. Richard L. Dean  
Dr. and Mrs. Anthony J. DeLapa  
Dickinson Buick-Dodge  
Mr. Joseph F. Doll, Jr.  
Mr. and Mrs. Jay Dowd  
Mr. Murray O. Duggins  
Edenton Street Methodist Church  
EUA Cogenex  
First Union Foundation  
Mrs. Dorothy H. Gardner  
Dr. Sid Gautam  
General Board of Higher Education and Ministry UMC  
Mr. Robert S. Gibson  
Dr. Stanley G. Griffin  
Dr. and Mrs. Michael L. Hale  
Mrs. Anita S. Harding  
Mrs. Robert C. Hatfield  
Mrs. Evelyn G. Hauser  
Haymount United Methodist Men

Healy Wholesale Company, Inc.  
Hecht's  
Dr. and Mrs. M. Elton Hendricks  
Hercules Steel Company, Inc.  
Mr. and Mrs. Timothy Holtsclaw  
Home Federal Savings & Loan  
J. C. Penney Company  
J.P. Riddle Charitable Foundation  
Jefferson Pilot Foundation  
Ms. Elva L. Jess  
LTC and Mrs. Lehman H. Johnson, Jr.  
Mr. Jerry A. Keen  
Kiwanis Club of Fayetteville  
Largent Consulting Engineers  
Dr. Kenneth B. Lewis  
Mr. and Mrs. Jack R. Lindley  
Dr. William P. Lowdermilk  
Mr. James H. Maynard  
Dr. and Mrs. Oscar L. McFadyen, Jr.  
Mrs. Mary Mercer  
Mid-South/Trigon Insurance Co.  
Mr. Jerry R. Monday  
Moorman, Kizer & Reitzel, Inc.  
Mr. and Mrs. Philip Mullen  
N.C. Academy of Physician Assistants  
Mr. Mitchell A. Nance  
North Carolina Natural Gas  
Dr. Richard W. Pearce  
Pennsylvania Lumbermens Mutual  
The Reverend and Mrs. Charles R. Pittman  
Mr. Richard L. Player, Jr.  
Poole Warehouse, Inc.  
Powers-Swain Chevrolet, Inc.  
The Reverend Dr. William M. Presnell  
Mr. F. Patterson Quantz  
Shuller Ferris Johnson & Lindstrom  
Smithboro Furniture Company  
Sodexo Marriott Mgmt, Inc.  
Mr. and Mrs. Anatol Sokolov  
Mr. Louis Spilman, Jr.  
St. John's Episcopal Church  
Mr. Marlin M. Stewart  
Stewart Nissan-Oldsmobile  
Mr. and Mrs. Harold J. Sturdivant  
LTC and Mrs. Walter M. Swing  
Mrs. Lura S. Tally  
Mr. R. Dillard Teer  
Tile Inc. of Fayetteville  
Mr. and Mrs. W. Lyndo Tippet, CPA  
Triangle Community Foundation  
Ms. Terri Union  
United Methodist Foundation  
Up & Coming Magazine  
Valley Motors, Inc.  
Wachovia Bank & Trust Company  
Wachovia Bank  
Mr. and Mrs. Thomas Walden  
Mr. L. Stacy Weaver, Jr.  
Mr. John H. Wheeler  
Mrs. Deleano Williams  
Yarborough Motor Company  
Mr. and Mrs. James M. Zeigler

## MONARCH SOCIETY

(\$500 - \$999)

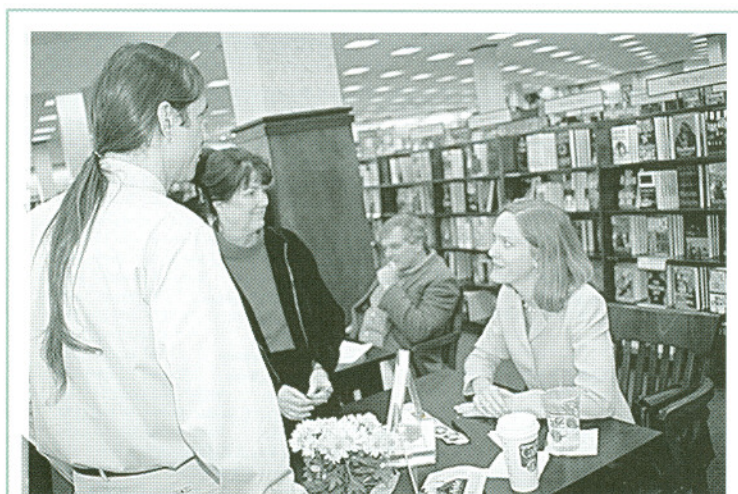
Mr. and Mrs. Jerry L. Alphin  
The Reverend Chester J. Andrews  
Mr. and Mrs. Terry C. Bibleheimer  
Biltwell, Inc.  
Mr. Robert Blecker  
Mr. Robert W. Bloodworth  
Bobby Taylor Oil Co., Inc.  
Mr. and Mrs. John Butler  
Carolina Regional Radiology  
Dr. Suzan K. Check  
Dr. and Mrs. Robert S. Christian  
Dr. and Mrs. Samuel J. Clark, III  
LTC and Mrs. J.A. Conley  
Dr. Robert H. Cooper  
Mrs. Mildred Dexter-Rosell  
Ms. Gail Dickinson  
Mr. John G. Dicks, III  
Mr. and Mrs. G. Gordon Dixon  
Econo Lodge I-95  
Mr. and Mrs. Alfred E. Fabrico  
Fayetteville United Methodist Church  
Dr. Loleta W. Foster  
Mr. J. N. Gibson  
Mrs. Winifred M. Grannis  
Mr. Roy J. Haddock  
Haire Plumbing Company, Inc.  
Mr. Joe Bronner Harrill  
Mr. and Mrs. Robert Harrington  
Harris Wholesale  
Dr. and Mrs. William C. Harrison  
Dr. Randall L. Hartman, Esquire  
Mr. Gordon B. Herbert  
Mr. and Mrs. David Herring  
Mr. J. Daniel Highsmith, Sr.  
Mr. Jerry Hogge  
Ms. Linda Holleman  
Holt Oil Company  
Hubbard Pipe & Supply, Inc.  
Jones Electric, Inc.  
Mr. and Mrs. Chester E. Keen  
Mr. John Killen  
Mr. and Mrs. James M. Kizer  
Mr. Frederic J. Koch  
LaFayette Cemetery Park Corp.  
LaFayette Motor Sales, Inc.  
LaFayette Society  
Lisa's Picture Framing  
Mr. Rick Lowe  
Mr. and Mrs. Bryan May  
The Honorable and Mrs. D. Carmichael McIntyre, II  
Dr. Eric W. Miller  
Ms. Maureen M. Molter  
Mr. and Mrs. Ocie F. Murray, Jr.  
New Rainbow Restaurant  
Mrs. Leta S. Olson  
Dr. and Mrs. Henry E. Parfitt

Pilot Club of Fayetteville  
Mr. Bruce R. Pulliam  
Raleigh District United Methodist Men  
Mr. Robert H. Short  
Mr. and Mrs. Robert T. Smith, Jr.  
Mr. James J. Townsend  
Triangle Bank  
Union Corrugating Company  
V-Point Super Market  
Mrs. Trudi Jaber Waters  
Mrs. Louis R. Wilkerson  
Mr. David G. Wilson  
WKML - FM  
The Womans Club

## GREEN & GOLD CIRCLE

\$250 - \$499

Ms. Joan English Allen  
Mrs. Dawn F. Ausborn  
Mr. David A. Bass  
Ms. Peggy G. Batten  
Dr. Elizabeth Belford  
Mr. and Mrs. Darrell D. Bock  
Mr. Eric Brandon  
Mrs. Nancy W. Broadwell  
Broadwell Construction Co.  
Mr. John W. Brown  
Cape Fear Amateur Radio Society  
Mrs. Patricia M. Cashion  
Centura Bank  
Mr. Anthony Chavonne  
Dr. Franklin S. Clark  
Mrs. Linda M. Clark  
Mr. Norman A. Coltrane  
Mr. Steve Conley  
Consumers Title Company  
Ms. Lori B. Cornwell  
Mr. William J. Costin, Jr.  
Dr. Claude P. Dowd  
Dr. and Mrs. Gerald Ellison  
Mr. and Mrs. William P. Estes  
Mr. David L. Foster  
Mr. Ron Foster  
Mr. Trent A. Gregory  
Dr. William F. Grimes  
GTE Foundation  
Mr. and Mrs. James S. Harper  
Mr. and Mrs. William R. Hawley  
Mr. John F. Holmes  
Mr. George Jacobs  
Ms. Julia P. James  
Dr. and Mrs. Paul S. Johnson  
Mr. Robert A. Jones, Jr.  
Mrs. Amanda G. Lampros  
Lee Hyundai, Inc.  
Mr. James A. Maher  
McFadyen Music Company  
Mr. and Mrs. Marcus G. McKnight  
Merrill Lynch & Co., Inc.  
Metropolitan Life Foundation  
Mr. and Mrs. Wendell Moseley  
N. C. Consortium For International Education  
Mr. and Mrs. Robert A. Nardone  
NationsBank  
Mr. and Mrs. Charles M. Ollinger  
The Reverend Carrie W. Parrish  
Dr. Robert F. Pelham  
Dr. Lorenzo Plyler  
Prescription Center  
Mrs. Anne C. Raper  
Ms. Diana L. Reichelderfer  
Mr. D. P. Russ  
Schering Sales Corporation  
SCS Direct Mail Marketing  
Mr. Michael Sokalski  
Mrs. Marie T. Stewart  
Mrs. E. Ann Sutton  
Systel Office Automation  
Mr. Gerald A. Teele  
Tew Tile & Carpet Company  
Honorable Leonard W. Thagard  
Mr. Lawrence Thornton  
Townsend Real Estate  
The Reverend Kenneth S. Valentine  
Mr. John L. Vereen  
Ms. Cynthia A. Walker  
Dr. Michael Ward  
Wellman, Inc.  
Mr. William R. West, Sr.  
Mr. and Mrs. Sam M. Wilson  
Mr. Jerry C. Wood, Sr.  
Dr. Thomas S. Yow, III



Dr. Mary Wheeling talks with visitors to Barnes & Noble about her book, *Fighting the Current: The Life and Work of Evelyn Scott*.





**CENTURY CLUB**

(\$100 - \$249)

Mr. and Mrs. J. Guy Abell  
 Mr. and Mrs. Maness I. Adcox  
 Ms. Genie E. Addleton  
 Adecco Employment Services  
 Allman Electric Corporation  
 Mr. Jeffrey D. Alton  
 Mrs. Sandra Lee Aman  
 Paul J. Amaral  
 Antex Exterminating  
 Mr. and Mrs. Stephen B. Atkinson  
 Mr. and Mrs. Michael Bain  
 Mr. Gregory Banner  
 Mr. L. Curtis Barnes and Dr. Linda Sue Barnes  
 Mrs. Susan Baty  
 Mr. and Mrs. Howard Baulch  
 Bearing Service Co. of PA.  
 Mr. and Mrs. Robert M. Bennett  
 Mr. Sean Bermingham  
 The Reverend Nancy Ruth Best  
 Mr. Willie E. Bethune, Jr.  
 Mr. William H. Billings  
 Mr. J. Spencer Birdsong  
 Mr. Carl C. Birk  
 Mr. Brian W. Bishop  
 Dr. Joan Bitterman  
 Ms. Mary Blanc  
 Mr. Steven K. Blanchard  
 Mr. Graham B. Blanton  
 Blashfield Communications  
 Mr. and Mrs. Raymond Bohm  
 Mr. and Mrs. Joseph J. Bonargo  
 Mr. Barry A. Box  
 Mrs. Amy E. Brace  
 Mr. Mark T. Branch  
 The Honorable and Mrs. E. Maurice Braswell  
 Mrs. Lynn Breeden  
 Mr. Richard C. Briggs, Jr.  
 Mr. A. Paul Brill, III  
 Mr. Charles W. Broadfoot, III  
 Mr. Robert S. Brodie, Jr.  
 Mr. and Mrs. Edwin N. Brower, Jr.  
 Mrs. Terri S. Brown  
 The Reverend Wesley F. Brown  
 Dr. Joseph Brum, Jr.  
 Mrs. Catherine Bryant  
 Mrs. Marion H. Bryant  
 Mr. Richard A. Bryant  
 Mr. and Mrs. Robert L. Buehrle  
 Mrs. Donna M. Bullard  
 Mrs. Betty G. Bunce  
 Butler Electric Supply of Fayetteville  
 CW4 and Mrs. Harry J. Byard  
 Cain and Cain Advertising  
 Mr. Levie C. Cameron  
 Mr. Henry C. Campen  
 Ms. Ruby J. Campen  
 Mr. Clyde C. Capps  
 Mrs. Sandra M. Carter  
 The Reverend Theodore V. Carter, Sr.  
 Mr. and Mrs. D. Brian Cash  
 Mr. and Mrs. Danny Cassidy  
 Mr. Robert J. Chaffin  
 Mrs. Mitu Chaudhuri  
 Chicago Flame Hardening  
 Chris's Open Hearth Steak  
 Chums, Inc.  
 ClaimCure, Inc.  
 Mr. and Mrs. A. Wilbur Clark  
 Mr. James W. Clark  
 Mrs. Mary Pride Clark  
 Mrs. Martha A. Clarke  
 Mr. John W. Cline, Jr.  
 Dr. and Mrs. Charles Q. Coffman  
 The Reverend and Mrs. James H. Coile  
 Mr. Ronald K. Coleman  
 Mr. and Mrs. C. Wayne Collier  
 Collier Insurance and Assoc.  
 Mr. Samuel H. Compton, Jr.  
 Mrs. Louise Council  
 Mrs. Duke B. Crane  
 Mr. William B. Crompton, III  
 Mr. Russell C. Crowell  
 Mrs. Ruth R. Crumley  
 Mr. Brian D. Cuppett  
 Dr. C. T. Daniel  
 Mrs. Libby S. Daniel  
 Ms. J. Lois Dawson  
 Mr. A. G. Mason Dirickson  
 Mr. John Dixon  
 Mrs. Frances P. Dorsett

Dunn's Nursery & Garden Shop  
 Eastern Turf Equipment, Inc.  
 Mrs. Tammy Edens  
 Mr. Maurice W. Elliott  
 Mrs. Victoria Elmore  
 Col. Richard H. Estes, USAF  
 The Reverend and Mrs. Kenneth Evans  
 Express Stop Stores  
 Mr. and Mrs. James Fair  
 Mr. and Mrs. James O. Farmer, Jr.  
 Mr. and Mrs. Robert W. Ferris  
 Mr. William C. Fields  
 Finch Oil Company  
 Mr. Herbert R. Finger, Jr.  
 Mr. E. Wilson Fisher, Jr.  
 Mr. and Mrs. Herbert Fleishman  
 Mr. and Mrs. James M. Fleishman  
 Dr. Malcolm Fleishman  
 Fleming & Associates  
 Dr. Jim Foster  
 Mr. Danny R. Fowler  
 The Reverend and Mrs. R. C. Frazier

Mrs. Mary Flagg N. Haugh  
 Mrs. Swan D. Haworth  
 Ms. Amy Heese  
 Heilig-Meyers Furniture  
 Mr. and Mrs. Martin J. Hering  
 Mr. Charles S. Hester  
 The Highlander Doll Club  
 Mr. Richard H. Hobgood  
 Hodges Associates, Inc.  
 Mr. Alan Holden  
 Mrs. Marianna Hollinshed  
 Holmes Electric, Inc.  
 Mr. Thomas A. Hood  
 Mr. and Mrs. Stanley Huffman  
 Huggmugger's Grill  
 Mr. John E. Humphreys  
 The Reverend Jack M. Hunter  
 Mr. Mark Hurley  
 Mr. and Mrs. Arthur P. Hurr  
 Mr. Henry Hutaff, Sr.  
 Mr. Henry G. Hutaff, Jr.  
 Mrs. Lois Hutaff

Mrs. Marilyn T. Kiser  
 Mr. and Mrs. Mamoru Kubota  
 Miss Lois J. Lambie  
 Mrs. Carolyn Lancaster  
 Mr. and Mrs. William T. Landis  
 Ms. Rosemary J. Lands  
 Lanetech Manufacturing Company  
 Mrs. Barbara Ann Lawson  
 Mr. Donald F. Leatherman  
 Mr. and Mrs. Howard Leete  
 Mr. Rodney E. Legates  
 Mr. and Mrs. John Leidner  
 Col. Alfred Lemire, (Ret.)  
 Mr. and Mrs. Jesse LeNeave  
 Leon Sugar's Men Shop  
 Ms. Mary F. Lewter  
 Ms. Carina Lindley  
 Lt. General James M. Link, USA  
 Mr. David J. Little  
 Mr. James F. Loschivao  
 LTC and Mrs. James L. Louden  
 Dr. and Mrs. Howard Loughlin  
 Ms. Barbara Lowry  
 The LSV Partnership  
 Mrs. Joy Gilbert Ludwick  
 Dr. and Dr. Thomas N. Maki  
 The Reverend James E. Malloy, Jr.  
 Mr. and Mrs. Joe Maloney  
 Mrs. Elaine Marshall  
 Ms. Candice R. Martin  
 Mrs. Margaret A. Martin  
 Dr. Aubrey M. Masilela  
 Mr. George Massengill  
 Mr. George Matthews, III  
 Mr. Thomas H. Matthews  
 Dr. Harold E. Maxwell  
 Mr. Charles K. McAdams  
 Mr. and Mrs. John F. McAdams  
 Mr. F. Milo McBryde  
 Mr. W.S. McClure  
 Mr. James H. McDermott  
 McDonald Lumber Company, Inc.  
 Mr. and Mrs. Robert McEvoy  
 Mr. Amos W. McLamb  
 Ms. M. Regina McLaurin  
 The Reverend Dr. Samuel D. McMillan, Jr.  
 Ms. Lois M. McPherson  
 The Reverend Benjamin Ray Melvin  
 Mr. and Mrs. Donald L. Melvin  
 Mr. Ralph P. Melvin  
 Mr. Leslie J. Mengel  
 Mr. Rick Merrill  
 Mr. and Mrs. Richard Meyerrose  
 Mid-South Lighting  
 Mid-Way Barber Shop  
 Ms. Leslie Miller  
 Mr. Louis O. Miller, Jr.  
 Mrs. Betty L. Milligan  
 Mrs. Caroline C. Milner  
 Mrs. Rainelle D. Mishoe  
 Mrs. Cheryl C. Mitchell  
 The Reverend Mark C. Mooney  
 Mr. and Mrs. E. Ray Moore  
 Mr. William T. Moore  
 Mr. and Mrs. Frank M. Moorman  
 Mr. Walter C. Moorman  
 Ms. Mia Morris  
 Mr. Tim Newton  
 Ms. Anne M. Nimocks  
 Mr. and Mrs. Ken C. Norton  
 Mrs. Sarah O'Hanlon  
 Mrs. Kathryn S. Offenhauser  
 Mr. Ned Olinger  
 Dr. and Mrs. Clarence S. Olive  
 Mrs. Mary Erwin Olive  
 Mr. and Mrs. J. Harvey Oliver, Jr.  
 Mr. and Mrs. Gary Olney  
 Osborne Glass Company, Inc.  
 Mrs. Barbara J. Overman  
 Mr. O. Charles Owen, Jr.  
 Owen's Florist  
 Mrs. Sylvia G. Parnell  
 Mr. and Mrs. Boyd D. Parsons  
 Mr. Wayne Parsons  
 Mrs. Brenda H. Peregoy  
 Dr. Robert Perkins  
 Mr. John E. Petree  
 Mr. Robert J. Pilewski  
 Mr. and Mrs. Richard L. Player, III  
 Player, Inc.  
 Mr. and Mrs. Thomas Pope, Jr.  
 Mrs. Elaine Porter  
 Mrs. Ina Mae B. Powell  
 Cpt. Orrin B. Powell, USN(Ret.)  
 Mr. and Mrs. Don K. Price



*Cordellia Murray receives a B.S. in Criminal Justice and Sociology.*

CW4 William Freeman, USA (Ret.)  
 Dr. and Mrs. E. C. Garber, Jr.  
 Dr. and Mrs. F. S. Gardner, Jr.  
 Mr. John H. Gardner  
 Mr. and Mrs. Carrel Gay  
 Mr. John B. Gillam, III  
 Mr. John M. Gillis  
 Mr. and Mrs. Richard B. Gochnauer  
 Mr. and Mrs. Howard F. Godfrey  
 Mr. Daniel Goutley  
 Mr. John J. Grandefeld  
 Mr. Larry Green  
 Dr. and Mrs. Lavelly D. Gruber  
 Mrs. Judy C. Gum  
 Dr. C. Arnal Guzman  
 Mr. and Mrs. John C. Hadden  
 Mr. O. Alex Hager, II  
 Mr. Phil W. Haigh, Jr.  
 Mr. and Mrs. Philip M. Haile  
 Dr. Swayn G. Hamlet  
 Lt. General John W. Handy, USAF  
 Mr. John J. Haracivet, Jr.  
 Mr. Steven H. Harden  
 Dr. Joe W. Hardison  
 Dr. Lewis B. Hardison  
 Mrs. Monica J. Hardy  
 Mr. Billy Harrington

Mrs. Patricia D. Hutaff  
 Mrs. Sharon Irons  
 Ms. Michelle A. Jahren  
 Mr. J. David Jameson  
 Joe Thompson Realtors  
 Mr. and Mrs. Vaughn John  
 Mr. and Mrs. Daniel Johnson  
 Mr. Gordon E. Johnson  
 The Reverend James W. Johnson  
 Mrs. Jo Beth Johnson  
 Mrs. Thelma Johnson  
 Johnson-Sherman Company  
 Dr. and Mrs. John R. Jones  
 Dr. Thomas H. Jones  
 Dr. and Mrs. Weldon H. Jordan  
 Dr. William R. Jordan  
 The Reverend and Mrs. F. B. Joyner, Jr.  
 Mr. and Mrs. William Julian  
 Mr. James E. Justice  
 Ms. Susan A. Justice  
 Dr. Laura G. Kafka Ph.D.  
 Mrs. Laura J. Kamionka  
 The Reverend Linda K. Karalfa  
 Ken C. Lancaster Real Estate  
 Mrs. Virginia K. Kern  
 Mr. and Mrs. George King  
 Mr. Greg King





Mr. Lawrence M. Priest  
 Dr. William L. Pritchard  
 Purvis Brothers Ford  
 Mr. David L. Radford  
 Mr. and Mrs. Anthony E. Rand  
 Mrs. Harriet B. Ransone-Smith  
 Mr. Kenneth E. Reavis  
 Mr. and Mrs. Jack H. Reed  
 Mrs. Sarah C. Reeves  
 Refrigeration & Heating Co.  
 Mr. Riddick Revelle  
 Rhudy's, Inc.  
 Mr. David M. Rice  
 Mr. and Mrs. Michael Riddle  
 Mr. and Mrs. John Rimm  
 RJR Nabisco, Inc.  
 Mr. John G. Roberts  
 Mr. and Mrs. Benjamin D. Robinson, III  
 Mr. Brian R. Rodgers  
 Dr. and Mrs. Otto F. Rogers  
 Rogers & Breecce, Inc.  
 Mr. and Mrs. Raymond H. Roof, Jr.  
 Mrs. Ester K. Rumsisel  
 S. C. Tolbert, D.D.S., P.A.  
 Mr. and Mrs. Leonard Saleeby  
 Mr. and Mrs. Michael B. Saunders  
 Mr. and Mrs. Leslie E. Scott  
 Sears-Roebuck Company  
 Mr. and Mrs. William R. Sharp  
 Mrs. Judith B. Sharpe  
 Mrs. Mary Ann D. Sharpe  
 Dr. and Mrs. Frank S. Shaw  
 Mr. John G. Shaw  
 Mr. and Mrs. Edwin W. Sheffield  
 Dr. and Mrs. Richard H. Shereff  
 Dr. Claude P. Sherman  
 Mr. and Mrs. Robert N. Shuller  
 Mr. Benny Shumate  
 Mr. Roger G. Simmons  
 Mr. George A. Small  
 Mr. and Mrs. Doug Smedberg  
 Mr. Gary T. Smith  
 The Reverend J. Thomas Smith  
 Mrs. Karla Smith  
 Mrs. Linda Y. Smith  
 Mrs. Lynne D. Smith  
 Mr. W. Thomas Smith  
 Ms. Mae Belle L. Smyth  
 Southland Rental & Supply Co.  
 Mr. Charles M. Speegle, Jr.  
 St. Luke UMC  
 Mr. Frederick M. Stanton, Jr.  
 Mr. David L. Steven  
 Mr. and Mrs. James S. Stilwell  
 Mrs. Sandra Johnson Stolzer  
 Estate of Benjamin Franklin Stone  
 Mr. Jerry F. Stone  
 Mrs. Dolores B. Strickland  
 Mrs. Pamela J. Strickland  
 Mrs. Ruby Strouse  
 Stylin & Filin, Inc.  
 Mr. Daniel H. Suitch  
 Mr. Michael H. Sullivan  
 Mr. Dennis D. Swan  
 Mr. L. Thomas Swink  
 Mr. and Mrs. R. G. Taylor  
 Mr. David A. Teague  
 Dr. Harold J. Teague  
 Mr. M. R. Teer  
 Ms. Patsy M. Thames  
 Thomas M. Goetz, AIA Architect  
 Mr. and Mrs. C. Ray Thorne  
 Mrs. Diane G. Thornton  
 Ms. Edith Gray Tillman  
 Mrs. Lou P. Tippet  
 Tire Sales & Service, Inc.  
 Mr. Joseph H. Todd  
 Mr. Terry L. Tolbert  
 Tom J. Keith & Associates  
 Mr. and Mrs. James V. Townsend  
 Trinity UMC  
 Mr. and Mrs. Robert Turner  
 United Methodist Women, Calvary Methodist Church  
 Vansatory-Exum Insurance Agency  
 Mr. Charles T. Vest  
 The Reverend Hope A. Vickers  
 Vidimos, Inc.  
 Ms. Laura Vigari  
 Mr. and Mrs. C. H. Von Rosenberg  
 Mr. William H. Walker, II  
 Dr. James X. Ward  
 Mr. and Mrs. James R. Warner  
 Mr. J. Lee Warren, Jr.

Mrs. Linda H. Warren  
 Mr. James K. Waters, Jr.  
 Mr. Clinton Weaver  
 Webb Carpet Company  
 Ms. Sandra A. Wheeler  
 Mr. and Mrs. Stephen M. Whilden  
 Dr. Joyce White  
 Mrs. Neill Wilkins  
 Mr. Herman P. Williams  
 Williams Printing  
 Mr. Doug E. Wolfgang, Jr.  
 Cpt. Teresa D. Wolfgang  
 Mr. and Mrs. C. Fletcher Womble  
 Ms. Amanda H. Wunder  
 Mrs. Shelia D. Yates-Mattingly  
 Dr. Andrew Ziegler  
 Ms. Mouzetta Zumwalt-Weathers

## BELL TOWER CLUB

(up to \$99)

6.0 Sports  
 Mrs. Julia G. Abner  
 Ace Pawn Shop

Mrs. Carolyn Baldwin  
 Mr. and Mrs. Donald E. Baldwin  
 Mr. and Mrs. John Baranowski  
 Barbecue Hut, Inc.  
 Mrs. Lisa G. Barbee  
 Mrs. Carol S. Barber  
 The Reverend Eddie Barber  
 Mrs. Lovia Anne Barefoot  
 Mrs. Julie Barefoot  
 Mr. and Mrs. Dan T. Barker  
 Ms. Frances R. Barnes  
 Mr. Randall H. Barnes  
 Mr. and Mrs. Wayne Barnes  
 Mr. Gregory C. Barnhart  
 Ms. Karene T. Barrow  
 Mr. Eric Lee Barto  
 Mr. and Mrs. Reginald M. Barton, Sr.  
 Mrs. Lynda B. Baum  
 Ms. Edna Baxley  
 Mrs. Donna R. Beaman  
 Mr. and Mrs. John R. Beaman  
 Mr. and Mrs. Ronald L. Beaver  
 Mrs. Debbie B. Beavers  
 Mrs. Lee C. Beck  
 Ms. Mary Becton  
 Becton Dickinson and Company  
 Ms. Camisha M. Bell  
 Mr. William T. Bell

Mr. Samuel H. Brick, III  
 Mr. Hal Broadfoot, Jr.  
 Ms. Alice M. Brock  
 Mr. Daniel D. Brock  
 Mr. and Mrs. E. Clayton Brock, Jr.  
 Mr. and Mrs. Richard D. Brock  
 Ms. Summer E. Brock  
 Mr. Kristopher Bronell  
 Mr. Chyenne J. Brooks  
 Ms. Muriel A. Brooks  
 Mr. Charles Brouwer  
 Mr. Charles W. Brown  
 Mr. Jack D. Brown, Jr.  
 Mrs. Jo Anna W. Brown  
 Mr. and Mrs. L. Nelson Brown  
 Ms. Veronica Brown  
 Mr. L. Jefferson Bruton  
 Ms. Martha Bryant  
 Ms. Sarah C. Bryant  
 Mrs. Cheryl Bueck  
 Mr. and Mrs. Anthony J. Bugeja  
 Ms. Beverly M. Buie  
 Mrs. Jodie O. Bullard  
 Mrs. Sharon R. Bullard  
 Mr. John N. Bumgarner  
 Mrs. Kathryn G. Bundy  
 Mr. and Mrs. Kenny M. Burke, Jr.  
 Mr. Harvey L. Burns  
 Mr. J. Michael Burns  
 Mr. John A. Butler  
 Ms. Paula May Caddell  
 Mrs. Ruth L. Cade  
 Mr. Eusebius P. Cadet  
 Mrs. Amelia L. Caison  
 Mr. Turner F. Caldwell, III  
 Mrs. Lynda A. Campbell  
 Mrs. R. C. Canaday, Jr.  
 Mr. and Mrs. Donald R. Canady  
 Mr. Donald R. Canady, Jr.  
 Mr. and Mrs. Charles Capalbo  
 Mr. John C. Capps  
 Ms. Judy Capps  
 Ms. Karen L. Carlton  
 Carolina Power & Light  
 Ms. Victoria Carpenter  
 Mr. Grady L. Carroll  
 Mrs. Linda G. Carroll  
 Mr. Andre Carson  
 Mrs. Yvette F. Carson  
 Mr. William B. Carstarphen  
 Mr. George E. Carter  
 Mrs. Janet Carter  
 Mrs. Janet L. Carter  
 Mrs. Sandra T. Carter  
 Mr. W. Bradley Carter  
 Mr. Curtis A. Cash  
 Ms. Alice Cashwell  
 Mr. David A. Castaneda  
 Mr. and Mrs. Edwin Castle, II  
 Mr. Marry Van Cayton  
 Dr. Darl H. Champion  
 Mr. John W. Chance, Sr.  
 Mrs. Julia Dixon Chandler  
 Mr. and Mrs. Joseph Chandlee  
 Ms. Dorothy M. Chappell  
 Mr. and Mrs. Pete Chason  
 Mr. James M. Chesnut, III  
 Mr. and Mrs. David M. Childers  
 Mr. Barry C. Childress  
 Mr. Thomas D. Chipman  
 Mrs. Elizabeth C. Chismark  
 Mrs. Mary B. Choi  
 Mr. Matthew E. Christian  
 Mr. and Mrs. Richard F. Christiansa  
 Mrs. Robin C. Christine  
 Mr. and Mrs. Brett Ciananelli  
 Mr. David W. Clark  
 Ms. Guyla D. Clark  
 Dr. and Mrs. Louis P. Clark  
 Mr. Joe H. Clayton  
 Mr. and Mrs. Timothy J. Clemo  
 Mrs. Marilyn B. Cline  
 Mr. and Mrs. Michael W. Cobb  
 Mr. and Mrs. Richard H. Cockman  
 Mr. and Mrs. John E. Coker  
 Mr. Les J. Colburn  
 Mr. and Mrs. Brian K. Cole  
 Ms. Donita B. Coleman  
 Mrs. Mary Elizabeth Collier  
 Mrs. Dayna J. Collins  
 Mrs. Kathryn Collins  
 Mrs. Cynthia Colver  
 Mr. and Mrs. Thomas Colucci  
 Mrs. Betsy J. Conner



Alpha Psi Omega presents Steel Magnolias.

Mr. David L. Adams  
 Mr. Joseph Adams, Jr.  
 Ms. Paula L. Adams  
 Cpt. Kyle Joseph Adrian  
 Major Peter D. Ahl  
 Mr. and Mrs. Ron Alberson  
 Mr. E. D. Alcorn  
 Ms. Cynthia B. Allen  
 Ms. Katherine B. Allred  
 Allstate Insurance Company  
 Mr. and Mrs. Joseph Almeida, Jr.  
 Mrs. Mary T. Andersen  
 Mrs. Teresa R. Andrews  
 Mrs. Linda Archer  
 Mr. and Mrs. Robert L. Armfield, Jr.  
 Ms. Mary Arnold  
 Arran Realty, Inc.  
 Mr. John D. Ashford  
 Mr. and Mrs. C.W. Ashley  
 Mrs. Jean M. Aswad  
 Mr. and Mrs. James Atwell  
 Mr. David E. Auchmoody  
 Mr. and Mrs. B. Wayne Autry  
 Mr. William L. Aycock  
 Mrs. June Aysse  
 Mr. George Baca  
 Mr. and Mrs. Jasper L. Baggett  
 Dr. Lloyd Bailey  
 Pat B. Bailey  
 Mr. and Mrs. Joseph J. Bajkowski

Bell's Seed Store  
 Ms. Angela J. Benjamin  
 Ms. Willa Bennett  
 Dr. Gillie Benstead  
 Mrs. Ruthann Bindewald  
 Mr. and Mrs. Marion P. Bishop  
 Ms. Elizabeth C. Black  
 Mrs. U. B. Blalock, Jr.  
 Mrs. Kaye Corbin Bledsoe  
 Mrs. Bonnie B. Blue  
 Blue Realty  
 Mr. Steven Paul Bohlin  
 Mrs. Sylvia A. Boland  
 Mrs. A. Christine Bolyard  
 Mrs. Janet A. Bone  
 Ms. Joy A. Bonhurst  
 Mr. and Mrs. Kenneth Boone  
 Major Allen L. Borgards  
 Mrs. Kathy Borrelli  
 Ms. Mary Gaye Borum  
 Mr. Thomas L. Bosquet  
 Mr. and Mrs. R. S. Bossung  
 Mr. and Mrs. Ellison Bowman  
 Mrs. Olivia Godwin Bradley  
 Mr. and Mrs. C. Delaine Bradsher  
 Mr. and Mrs. David M. Brandenburg  
 Mr. John C. Brandt  
 Ms. Martha W. Brannock  
 Ms. Elizabeth Ann Brantley  
 The Reverend Dr. and Mrs. Roger Braun





Mr. and Mrs. Ernest L. Conner  
 Mrs. Marie Conner  
 Mr. David M. Connolly  
 Mr. and Mrs. Steven M. Connor  
 Ms. Patsy A. Conoley  
 Mrs. Cathy Cook  
 Mr. Gary W. Cooper  
 Mr. Robert J. Cooper  
 Copiers Plus, Inc.  
 Mr. and Mrs. Jim Copland  
 Mrs. Floried J. Core  
 Mr. Eugene R. Cote  
 Mr. and Mrs. Joe Cottrell  
 Mr. John P. Coughlin  
 CDR George S. Council, USN(Ret.)  
 Mr. Gregory A. Cox  
 Mr. Seth T. Cox, II  
 Mr. Edward M. Cozart  
 Mrs. Bonnie H. Crabtree  
 Ms. Beth Craig  
 Mr. and Mrs. John A. Crain  
 Ms. Lee S. Crawford  
 CO3 Steven G. Creech  
 Mr. Dwight E. Cribb  
 Mrs. H. Emily Crowley  
 Mr. and Mrs. Robert B. Crutchfield  
 Mr. and Mrs. Clifton S. Culbreth  
 Mrs. Leannah W. Culbreth  
 Cumberland Furniture, Inc.  
 The Reverend William E. Cummings  
 Mr. and Mrs. Michael R. Cunningham  
 Mrs. Rosemarie B. Cunningham  
 Mr. and Mrs. Harry Curran  
 Mrs. Norma E. Currie  
 Mr. Jay Currin  
 Mr. Richard S. Cutler, Jr.  
 The Reverend M. F. Daniel  
 Mr. Paul A. Daniels  
 Mr. Terry F. Daniels  
 Ms. Denise L. Darby-Hysell  
 Mr. Billy Davidson  
 Mr. Charles W. Davis, III  
 Mr. and Mrs. James Davis  
 Mr. and Mrs. James A. Davis  
 Mr. Jim Davis  
 Mr. Robert L. Davis  
 Mrs. Sylvia Brown Davis  
 Mr. Wyatt S. Davis  
 Ms. Beth Dawson  
 Mr. and Mrs. C. Robert Dawson  
 SFC Dawson  
 Mr. Hank Debnam  
 Ms. Rhonda M. Dees  
 Mr. Robert G. Dees, Jr.  
 Mr. and Mrs. N. H. Dement, Jr.  
 Mr. George F. Dempsey  
 Mrs. Beverly R. DenBleyker  
 Mrs. Patricia DeNeal  
 Mr. Timothy A. Dennis  
 Mr. and Mrs. George T. Dent  
 Mr. Richard L. DePruiter, Sr.  
 Mr. Vince Derosa  
 Ms. Janis H. Devalles  
 Mr. and Mrs. Joseph DeVoldre  
 Mr. and Mrs. Paul W. Dhyse  
 Mr. and Mrs. William Dickerson  
 Mrs. Diane B. Didden  
 Mr. James B. Dillard  
 Ms. Laura Dilworth  
 Mr. Keith Dimsdale  
 Mr. and Mrs. Gregory G. Dirks  
 Mr. David W. Distefano  
 Dixie Pawn Shop-Military Supply  
 Mr. and Mrs. Frank F. Dixon  
 Mr. and Mrs. Raymond W. Dombrowsky  
 Mrs. Kathleen Zambie Dooly  
 Mr. Bobby R. Dorman  
 Mrs. Karen R. Dorman  
 Mr. Brian D. Dougherty  
 Ms. Jacklyn Downes  
 Mr. Christopher G. Drew  
 Mr. and Mrs. Stephen Driggers  
 Mr. James Drury, III  
 Mrs. C. C. Duell  
 Mr. Jeff Dunham  
 Mrs. Angela G. Dunkley  
 Mr. Edward L. Dunn  
 Mr. and Mrs. Frank H. Dzielecki  
 Ms. Mary Elizabeth Earp  
 Mrs. Kensley Edge  
 Mr. David W. Edwards, Sr.  
 Mr. and Mrs. Samuel R. Edwards  
 Mr. S. Reese Edwards, Jr.  
 Mr. Gary S. Elefante

Elliot Construction Company  
 Mr. John Elliott  
 Mrs. Rena L. Elliott  
 Mrs. Gail W. Ellis  
 Mrs. Lorraine M. Elzey  
 Entre Business Systems Group  
 Mr. Ray St. Onge and Mrs. Janice C. Erne-St. Onge  
 Ms. Lutte L. Erwin  
 The Reverend and Mrs. Ronald F. Estes  
 Mrs. Rhonda Gore Eisherden  
 Mrs. Victoria S. Etheridge  
 Mr. and Mrs. Monroe E. Evans  
 1Lt. Cynthia A. Evelyn  
 Ms. Rhonda C. Faircloth  
 Mr. and Mrs. Danny G. Fann  
 Mrs. Marsha G. Faucette  
 Mr. W. Franklin Faulkner  
 Mr. Louis Feraca  
 Ms. Kellie S. Fernandez  
 Mrs. Susan Keeth Fertel  
 Ms. Susan Fillingham  
 Mr. and Mrs. Tim J. Finan  
 First Fayetteville Properties  
 Mr. and Mrs. George Fisher  
 Dr. Stephen B. Fleishman  
 Mr. Robert J. Flinn  
 Mrs. Catherine L. Flores  
 Mrs. Rita J. Foley

Mrs. Michele A. Givens  
 Mrs. Norma Gizoni  
 Ms. Geraldine Gladden  
 Mr. and Mrs. Jeffrey D. Glendening  
 The Reverend Phillip R. Glick  
 Mr. and Mrs. A. P. Gnann, Jr.  
 Ms. Arlaine Goforth  
 Mr. Michael W. Gonella, Sr.  
 Mr. David B. Goodyear  
 Mr. and Mrs. Clyde W. Gordon, Jr.  
 Mr. L. James Gosier, Jr.  
 Mr. and Mrs. Earl E. Gottsman  
 Mrs. Gail Graham  
 Ms. M. Janet Graham  
 Mr. Michael Graham  
 The Reverend Henry Boone Grant, Jr.  
 Mrs. Hilda Graves  
 Mr. and Mrs. Manning R. Gray, Jr.  
 Mr. and Mrs. Dwight L. Greene  
 Mrs. Valera D. Gregory  
 Mr. and Mrs. W.L. Gregory  
 Mrs. Jo Ann E. Griffith  
 Ms. Cathy S. Griffith  
 Mr. W. Henry Grimsley, III  
 Mr. and Mrs. Richard Gromolovits  
 Mr. and Mrs. James Groseclose  
 Mrs. Diane Gross  
 Ms. Denise A. Guidotti

Col. Clark W. Hastings, USA (Ret.)  
 Mrs. Ann C. Hatcher  
 Mrs. Belinda R. Hawley  
 Hayes Hobby House, Inc.  
 Mr. James R. Haygood, Jr.  
 Mr. James E. Heath  
 Mr. Philip Jennings Hedgepeth  
 Ms. Jennifer Hersey  
 Highlander Golf, Inc.  
 Mr. Donald J. Hilburn  
 Mr. Barnett H. Hill  
 Mr. Bobby Hill  
 The Reverend Jan N. Hill  
 Ms. Phyllis Hines  
 Ms. Kim Hocking  
 Ms. Pamela S. Hoff  
 Mrs. Cheryl W. Holladay  
 Mr. and Mrs. M. James Hollis  
 Mr. and Mrs. Wallace Holmes  
 Mr. Harold D. Holmes  
 Mrs. Hannah Holt  
 Homemakers Furniture and Interiors  
 Mr. Chester Homicki  
 Ms. Kay Hooks  
 Ms. Christine Hopper  
 Mrs. Ann Collier Horne  
 Mr. Billy D. Horne, Jr.  
 Mr. Reid A. Horne  
 Mrs. Belinda Howard  
 Ms. Patty Howard  
 Mrs. Morie Murray Howard  
 Ms. Gladys P. Howell  
 Ms. Dorothy Hubbard  
 Mr. Elmer C. Hubbard  
 Mr. Joseph E. Huggins  
 Mr. John T. Hughes, Jr.  
 Ms. Mary Hughes  
 Mr. and Mrs. Ellis H. Huguley  
 Mr. and Mrs. Shelley Hugus  
 Mr. J. Stewart Humphrey  
 Ms. Janice E. Humphreys  
 Dr. and Mrs. Thomas G. Hurdle  
 Mr. Brad Hurley  
 Mr. John W. Hurley  
 Mrs. Kimberly A. Hurley  
 Ms. Patricia A. Hurley  
 Mr. Mark Ingram  
 Ms. Linda W. Irwin  
 J. C. Penney Company, Inc.  
 Jack A. Watson, CPA  
 Mrs. Gayle Jacobs  
 Mrs. JoAnne J. James  
 Mr. and Mrs. Edward M. Janis  
 Mrs. DeeDee M. Jarman  
 Mrs. Margo M. Jarvis  
 Mr. and Mrs. Robert Jeffreys  
 Mrs. Debbie B. Jenkins  
 Ms. Eloise L. Jenkins  
 Mrs. Sonya Jenkins  
 Mrs. Laurie A. Jennings  
 Mr. Robert Bruce Jervis  
 Mrs. Brenda K. Johnson  
 Mrs. Brenda W. Johnson  
 Mr. Charles R. Johnson  
 Mrs. Debra C. Johnson  
 Ms. Elizabeth Johnson  
 Mr. and Mrs. Fred Johnson  
 Mrs. Laura E. Johnson  
 Mr. and Mrs. M.G. Johnson, Jr.  
 Mrs. Marselene Johnson  
 Mrs. Melissa W. Johnson  
 Mr. and Mrs. Richard Johnson  
 Mr. and Mrs. Robert Johnson  
 Mr. and Mrs. Ronnie K. Johnson  
 Mrs. Stephanie D. Johnson  
 Mrs. Barbara A. Jones  
 Mr. and Mrs. Donald R. Jones  
 Mrs. Rebecca Jones  
 Mr. and Mrs. Carl Jordan  
 Mr. John A. Jordan, III  
 Mrs. Marjorie M. Jordan  
 Mr. and Mrs. Kevin Jorgenson  
 Mrs. Tamera M. Josephson  
 Mrs. Shirley S. Juskowiak  
 Mr. and Mrs. Dale Justice  
 Mrs. Carolyn Justice-Hinson  
 Kanos Enterprises, Inc.  
 Mr. Stephen James Kay  
 Ms. Doe Ann Crocker Keane  
 Mr. and Mrs. C. O. Kearney, Jr.  
 Mrs. Caroline F. Kearns  
 The Honorable A. Elizabeth Keverer  
 Mr. and Mrs. Walter L. Kerley, Jr.  
 Mr. and Mrs. Ronnie Ketchie



*Members of Synergy, the MC show choir, perform at the Music Department's Winter Concert.*

Mrs. Jane A. Folkerts  
 Mrs. Gwendolyn L. Ford  
 Mr. and Mrs. Claude A. Foster, Jr.  
 Ms. Silvana M. Foti  
 Mrs. Billie Kelly Foushee  
 Mr. and Mrs. Michael A. Fradel  
 Mrs. Katherine H. Fraley  
 Mr. Joshua B. Franklin  
 Mrs. Teena T. Fraser  
 Dr. and Mrs. William F. Freccia  
 Mrs. Karen Milner Freeman  
 Ms. Susan C. French  
 Cpt. Jay B. Fullerton, USA  
 Ms. Shannon L. Gabriel  
 Mr. and Mrs. Steve Gage  
 Mr. and Mrs. Frank Gagliano  
 Mrs. Jill A. Gallen  
 Mrs. Marcia Gallina  
 Dr. Delbert D. Garrison  
 Mr. and Mrs. A. Ken Gault, Jr.  
 Mr. and Mrs. David L. Gdovin  
 Mrs. Nancy J. Gee  
 Mr. Richard B. Genter  
 Mr. and Mrs. Woody Gentry  
 Ms. Penny C. George  
 Mr. Robert L. Giannini, III  
 Ms. Mary Gibson  
 Mr. and Mrs. James W. Gillespie, Jr.  
 Mr. and Mrs. Sammy L. Gilmore  
 Mr. and Mrs. Michael A. Giossi  
 Mr. Clifford J. Gissell

Mr. and Mrs. Mark A. Gusso  
 Mr. Samuel P. Guy  
 Mrs. Susan C. Guy  
 Mrs. Linda Nix Guzik  
 Mr. and Mrs. Danny Hagans  
 Mrs. Diane Haitcock  
 Mr. Daryl L. Hales  
 Mrs. Patricia H. Hales  
 Mrs. Paula J. Hales  
 Mr. Ernest Wayne Hall  
 Mr. and Mrs. George M. Hall  
 Dr. and Mrs. James S. Hall  
 Mr. Milton David Hall  
 Mr. Tracy I. Hall, III  
 Mr. Eugene S. Hallock  
 Ms. Katherine Hammill  
 Mr. Raymond Hammond  
 Mrs. Ann Y. Hampton  
 Mrs. Pamela J. Hanlin  
 Mr. and Mrs. Glenn C. Haana  
 Ms. Helen Hanna  
 Mr. Alton L. Hare  
 Ms. Stacey I. Harper  
 Ms. Diane Harrell  
 The Reverend Claudia Gail Harrelson  
 Mr. J. C. Harris, III  
 Mr. Phillip B. Harris, Jr.  
 Mr. and Mrs. Ricky Hart  
 Mrs. Dianne Harvey  
 Mr. Jeffrey H. Haskett  
 Ms. Janet K. Hassenplug



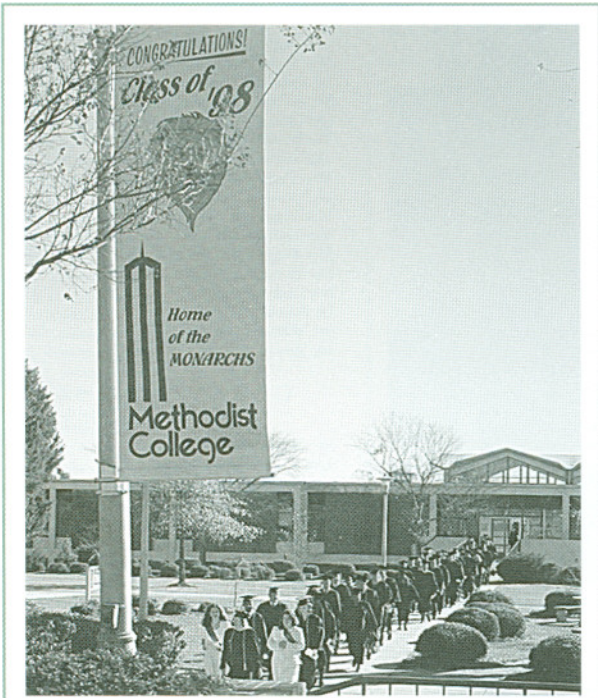


Mr. and Mrs. Keith Kildow  
 Mr. Ray J. Kinder  
 Mrs. Anita Fisher King  
 Mr. James M. Kizer, Jr.  
 Mrs. Lou Knight  
 Mr. Patrick J. Koballa  
 Mr. and Mrs. Kevin Koker  
 Mr. Travis T. Kornegay  
 Mrs. Constance P. Kotsopoulos  
 Mrs. Sandra I. Kumbargi  
 Mr. Donald C. Lacy  
 Mr. and Mrs. Evan H. Lacy, III  
 Ms. Cathy Lada  
 LaFayette Clinic, P.A.  
 Mr. David E. Lain  
 Mrs. Mary Beth Laing  
 Mr. C. DeWitt Lancaster, Jr.  
 The Reverend James R. Lancaster, Jr.  
 Mr. Jamie Lancaster  
 Mr. and Mrs. Don H. Landreth  
 Mr. Mark L. Lange  
 Mr. Jackson L. Langley, Jr.  
 Mr. and Mrs. Henry Lankford  
 Mr. and Mrs. Jimmy Larrimore  
 Mrs. Susan Sanderson Lasater

Mr. and Mrs. G. Gordon Livingston  
 Mrs. Patricia M. Livingston  
 Ms. Kathryn C. Locey  
 Ms. Brenda G. Lockett  
 Mr. Jeff Locklear  
 Mrs. Pamela Y. Long  
 Mrs. Misty Kaye Looney  
 Mr. C. Keith Love  
 Mr. Jerry L. Lowenstein  
 Mrs. Ann L. Loyd  
 Mr. Cabell Luck, Jr.  
 Mr. and Mrs. Larry Lugar  
 Mr. and Mrs. Richard Y. Lyons  
 Mr. Michael J. Lysek  
 Mr. Alton E. Mabb, Jr.  
 Mr. J. Allen MacDonald  
 Mr. Stuart E. MacIntyre  
 Ms. Shirleen Mack  
 Col. and Mrs. William D. MacMillan, IV  
 Mr. Stephen A. Magnotta  
 Mr. Anthony P. Maki  
 Mr. Charles W. Malloy  
 Mr. Darrell E. Maloy  
 Ms. Tracy L. Maness  
 Mrs. Diane Q. Mann

Mr. Ronald N. McCullen  
 Mr. Harvey S. McDannald, Jr.  
 Rev. and Mrs. J. Richard McDowell  
 Ms. Patrice McElfresh  
 Mrs. Mary Etta McFadyen  
 Mr. James R. McFayden, Jr.  
 Mrs. Donna L. McGee  
 Mr. Jack McGinley  
 Mr. Dick D. McInnis  
 Dr. Mark S. McKinnon  
 Mr. Joseph K. McKoy  
 The Reverend and Mrs. H. M. McLamb  
 Mrs. Charlotte McLaurin  
 Mrs. Leigh Anne McLean  
 Ms. Karen Renee McLeod  
 Mr. Neal E. McLeod  
 Mr. Richard McMahon  
 Mr. Larry S. McMillin  
 Mrs. Norma B. McNally  
 Mr. Neil McNeill  
 Mrs. Kathy D. McPhail  
 Ms. Kimberly F. McPhail  
 Mrs. Jennifer McVeigh  
 Mr. Glen E. Meade, Jr.  
 Mr. and Mrs. Samuel H. Meares  
 Ms. Eunice H. Mellott  
 Ms. Jeanne F. Menefee  
 Dr. Charles H. Mercer  
 Methodist College Golf Shop  
 Mr. and Mrs. Robert J. Miano  
 Mrs. Lynn E. Midgett  
 Mr. and Mrs. Jeffrey Miller  
 Ms. Kimberly A. Miller  
 Mrs. Mary Jane Miller  
 Mr. and Mrs. Robert C. Miller  
 Milliken & Company  
 Estate of L. Dean Minges  
 Ms. Pat Mingle  
 Mr. Bradley B. Minshew  
 Mr. Terry A. Mitchell  
 Mr. and Mrs. Thomas Mitchell  
 CW2 Mark E. Moen, USA  
 Ms. Nancy Moffitt  
 Mrs. Kay Molnar  
 Mrs. Martha Monroe  
 Mrs. Margaret C. Moody  
 Mrs. Sallie King Moody  
 Mr. and Mrs. Doug Moore  
 Mrs. Jean Moore  
 Mr. and Mrs. Levy Moore  
 Mr. R. Steven Moore  
 Mr. William C. Moore, Jr.  
 Mr. D. Scott Morgan, Sr.  
 Mrs. Marian Moorman Morgan  
 Mr. Craig A. Morris  
 Mr. and Mrs. Shannan Morris  
 Mr. Mark A. Morris  
 Ms. Monique Morton  
 Dr. and Mrs. Galen C. Moser  
 Mr. and Mrs. Donald E. Moss  
 Mrs. Susan G. Motes  
 Mrs. Deborah Motte  
 Mr. Stanley D. Mozingo  
 Mr. and Mrs. Dennis W. Mullins  
 Mrs. Sonya S. Murdock  
 Dr. Peter Murray  
 Mrs. Claudia J. Myers  
 Mrs. Darlene Nader  
 Mr. C. Kim Nazarchyk  
 Mr. John M. Nelson  
 Ms. Stephanie R. Nicholson  
 Ms. Martha H. Nimmo  
 Mr. Marion J. Noland  
 Mr. Jerry G. Norris  
 Mr. Larry W. Nunnery  
 Mr. and Mrs. Stuart A. O'Brien  
 Mrs. DiAnne P. O'Donnell  
 Mr. James J. O'Keefe  
 Mrs. Jennifer D. O'Keefe  
 Ms. Christa M. O'Quinn  
 Odell Smith & Sons Plumbing Co.  
 Mr. and Mrs. Eugene Odom  
 Ms. Hattie M. Odom  
 Mr. Terry D. Ogerly  
 Mr. and Mrs. James Ohlmacher  
 Mr. and Mrs. Thomas Olcott  
 Mr. Jeffrey A. Olson  
 Mrs. Diane Owens  
 Ms. Teresa C. Owens  
 Mrs. Mara I. Padilla  
 Mr. and Mrs. Preston D. Page  
 Mrs. Nell B. Palmer  
 Mr. Ernest W. Parker  
 Mr. and Mrs. Jimmy Parker  
 Mr. Roy Parker

Mr. and Mrs. Nelson E. Patterson  
 Mrs. Rebecca H. Pattishall  
 Mr. and Mrs. D.L. Paul  
 Mrs. Karen C. Payne  
 Ms. Kristin M. Payne  
 Mr. and Mrs. William W. Pearce  
 Ms. Mary Helen Pearsall  
 Mrs. Betty Jo Pearson  
 Mrs. Frances Wilson Pearson  
 Mrs. Kandice L. Pedley  
 Mr. Jim Peebles  
 Mr. Edward A. Perry  
 Ms. Carol B. Peterson  
 Mr. and Mrs. William A. Pettit  
 Mr. Robert D. Phillips  
 Mr. Larry S. Philpott  
 Mr. Ronald K. Phipps  
 Mr. and Mrs. John D. Picciano  
 Ms. Georgeanne K. Picu  
 Mrs. Virginia M. Pierce  
 Miss Helen M. Pilkay  
 Mr. and Mrs. Pipkin  
 Mr. and Mrs. Jim Pittman  
 Mrs. Donna Pleasant  
 Mrs. Carmen S. Pomeroy  
 Mrs. Ann M. Pope  
 Mr. Kerry D. Pope  
 Mr. Richard S. Pope  
 Dr. Kenneth A. Popio  
 Dr. Michael Potts  
 Mr. and Mrs. J. Fletcher Poulk  
 Mr. and Mrs. Thomas E. Powell  
 Mr. and Mrs. Oliff C. Pratt  
 Mr. Terry D. Preiss  
 Dr. Julia Prewitt  
 Mrs. Sylvia Vessels Price  
 Mr. John R. Prince  
 Mr. and Mrs. Newton V. Prince, Sr.  
 Mrs. Susan Pulsipher  
 Mrs. Linda Massie Pyne-Hufnagel  
 Mr. and Mrs. Eric D. Qually  
 Mr. and Mrs. Buford M. Quay  
 Mr. H. Oscar Queen, III  
 Mrs. Laura V. Rambeaut  
 Mr. James J. Rapalje  
 Mr. Seldon B. Rapelye, Jr.  
 Mrs. Janet M. Raskin  
 Mr. and Mrs. Donald L. Rastede  
 Mrs. Elaine W. Ratliff  
 Mr. Hector N. Ray  
 Mr. Wilson Ray  
 Mrs. Mary Ray Raynor  
 Mrs. Melinda S. Raynor  
 Mrs. Marie Z. Reale  
 Mr. Douglas L. Reece  
 Mrs. Robin Register  
 Mrs. Emmi M. Rhodes  
 Mrs. Janice Marcy Rhue  
 Mr. Mark W. Rice  
 Mrs. Sue W. Richards  
 Mrs. Lydia B. Ricks  
 Ms. Krista L. Riley  
 Mr. Thomas E. Rittenhouse  
 Mr. and Mrs. Nathan Ritter  
 Mrs. Karen S. Roberts  
 Col. Marion D. Robertson, Jr.  
 Mr. and Mrs. Edward G. Robinson  
 Ms. Gloria Rodriguez  
 Mr. Jose C. Rodriguez  
 Mr. and Mrs. Ramon Rodriguez  
 Mr. Royal P. Rogers, Jr.  
 Mrs. Jennifer Rohrer-Walsh  
 Mr. Victor Jose Roman-Ortiz  
 CSM George D. Roraback Jr., USA (Ret.)  
 Mr. James Rose  
 Mrs. Juanita T. Rose  
 The Rose Group  
 Ms. Wilhemeina Ross  
 Mrs. Louise H. Rouse  
 Mr. Charles E. Routh  
 The Reverend and Mrs. James Rowlette  
 Ms. Carolyn Ruch  
 Mr. and Mrs. Anthony Ruf  
 Mr. and Mrs. Charles Ruffing  
 Mrs. Doris D. Rulnick  
 Mr. and Mrs. William Saam  
 Mr. Jeremy R. Sachs  
 The Reverend Michael W. Safley  
 Ms. Lucia B. Safran  
 Mr. and Mrs. Roger Sanchez  
 Mr. and Mrs. Thomas A. Sanders  
 Mr. and Mrs. J. Mitch Sandlin  
 Ms. Theresa Sasin  
 Ms. Patricia Scali



Faculty Marshal Elaine Porter leads the December 1998 graduates from Berns Student Center to Reeves Auditorium.

Ms. Patsy O. Lasley  
 Mr. and Mrs. Donald Lavertu  
 Mr. and Mrs. Ron LaVoie  
 Ms. Teresa LaVoie  
 Mr. and Mrs. Wilbur J. Lawson  
 Mr. J. Paige Ledford  
 The Reverend and Mrs. Henry W. Lee  
 Mrs. Neill Legg  
 Mrs. Jean Lemke  
 Mrs. Nancy C. LeVine  
 Mr. and Mrs. Gary F. Lewis  
 Mr. and Mrs. Raymond J. Licata  
 Dr. Jen-Hsiang Lin  
 Ms. Aimee R. Linder  
 Mr. Mark Lindner  
 Mr. Rick Lindner  
 Mr. and Mrs. William M. Lineberger  
 Mr. and Mrs. Howard G. Ling  
 Ms. Hazel G. Linn  
 Mr. and Mrs. Greg Liss  
 SFC Oscar E. Lister, USA (Ret.)  
 Mr. Oland B. Little  
 Little & Pulley Office Machine

Manpower  
 The Reverend Victor C. Mansfield, II  
 Mr. Alfred E. Marlowe  
 Dr. John M. Marr  
 Mr. and Mrs. Gary Marsh  
 Mr. David K. Marshall  
 Mr. Larry Marshall  
 Mr. and Mrs. Peter Marshall  
 Mrs. Rita M. Marshall  
 Mr. and Mrs. Robert Marshburn  
 Mr. Larry L. Martens  
 Mrs. Lucy S. Martin  
 Mr. R. Ken Martin  
 Mr. Richard Martin  
 Dr. Mary Anne Martin-Howell  
 Massey Hill Drug Company  
 Mrs. Helen Matthews  
 Mr. Joe Thomas Matthews  
 Mr. David E. Maxwell, Jr.  
 Mrs. Claudia H. May  
 Mr. Thomas C. Maze  
 Ms. Eva N. McAdams  
 Mr. and Mrs. Leonard A. McCauley





Mr. and Mrs. Jay Schablik  
 Mrs. Linda J. Schafer  
 Mrs. Cindy Schalla  
 Mr. and Mrs. John H. Scharf  
 Mrs. Karabeth Schleich  
 Ms. Gwen Scholl  
 Mrs. Cheryl Ann Schroeder-Thomas  
 Mr. and Mrs. James A. Schuermann  
 Mr. Alan G. Schwint  
 Dr. and Mrs. Charles K. Scott  
 Mr. and Mrs. Lassie L. Scott, Jr.  
 Ms. Linda B. Scott  
 Mrs. Peggy H. Scott  
 Mrs. Sophia A. Scott  
 Mr. A. Robert Searle  
 Mrs. Carolyn N. Sellers  
 Ms. Lisa A. Sessoms  
 Ms. Dell Jean Sharpe  
 Ms. Vernell P. Sharpe  
 Mr. Forrest C. Shaw, III  
 Mr. and Mrs. John C. Shaw, Sr.  
 Dr. Sharon E. Shaw  
 The Reverend and Mrs. Dennis Sheppard  
 Mr. Dwight Sheppard  
 Ms. Sarah J. Shew  
 Mr. Larry S. Shreve  
 Mr. and Mrs. George M. Shroyer  
 Mr. and Mrs. Ronald Shuey  
 Dr. Christian F. Siewers  
 Dr. John Sill  
 Mr. and Mrs. James Simmons  
 Ms. Carolyn Terry Simpson  
 Mr. Steve J. Sims  
 Mr. and Mrs. Clifford G. Singletary  
 Mrs. Laurier Sirois  
 Mr. and Mrs. Alan Skinner  
 Mrs. Christine Slappey  
 Mr. Arthur Smith  
 Mrs. Carmen E. Smith  
 Mrs. Colleen Warner Smith  
 Mr. and Mrs. David E. Smith  
 Mrs. Ella Rose Smith  
 Mr. and Mrs. Jack Smith  
 Mr. and Mrs. James B. Smith  
 Mrs. Lydia B. Smith  
 Mr. Raymond H. Smith, Jr.  
 Mrs. Sandra L. Smith  
 Mrs. Sue Smith  
 Mrs. Susan K. Smith  
 Mr. Thurman L. Smith  
 Mrs. Jean S. Snively  
 Mrs. Joyce Sorensen  
 Mr. Barry I. Souders  
 South Carolina Baptist Convention  
 Ms. Mary Alice L. Southerland  
 Ms. Ida J. Spada  
 Spectacles  
 Mrs. Rebecca S. Spell  
 Ms. Judy Spivey  
 Mr. and Mrs. Samuel F. Stack  
 Mr. and Mrs. Thomas H. Stanley  
 Mr. Kevin M. Starke  
 Mrs. Debbie W. Starling  
 The Reverend Jesse C. Staton, Jr.  
 Mr. and Mrs. Kim L. Steffanni  
 Stein Mart  
 Mrs. Anita C. Stephenson  
 Mr. and Mrs. Bruce Stevens  
 Mrs. Linda R. Stevens  
 Dr. and Mrs. Albert Stewart, Jr.  
 Mrs. Kathy Stewart  
 Ms. Yvonne R. Stohman  
 Ms. Anne Stone  
 Mrs. Suzanne Stork  
 Mrs. Anne Story  
 Ms. Melissa L. Stout  
 Ms. Susan Strawn-Holloway  
 Mr. Michael W. Strickland  
 Mrs. Rebecca Strickland  
 CW3 James F. Stroud, USA (Ret.)  
 Ms. Thomasina Sturdivant  
 Miss Mary Lou Suddath  
 Dr. and Mrs. W.B. Sugg  
 Mr. Bobby G. Suggs  
 Mr. and Mrs. John Sullivan  
 Mrs. Naomi R. Sullivan  
 Mr. Danny Summerlin  
 Mrs. Carla Supplies  
 Mrs. Dale Swanner  
 Mr. Reed P. Swanson  
 Mrs. Denise Sykes  
 Mr. and Mrs. Kenneth H. Sykes, Jr.  
 Mr. Ronald A. Sykes  
 Mr. Michael B. Szafranski

Mrs. Mary L. Talley  
 Mr. and Mrs. William Tarr, II  
 Mr. Quincy A. Tarrance  
 Mr. Elvin T. Tatum  
 Mrs. Ashley Taylor  
 Mr. and Mrs. Richard P. Taylor  
 Mr. Charles A. Teachey  
 Col. Cader C. Terrell, USA (Ret.)  
 Mr. Alan Terrell  
 Mr. Howard S. Thomas  
 Mr. Howard T. Thomas  
 Mr. and Mrs. Leighton A. Thomas  
 Thomas, Judy & Tucker, P.A.  
 Mrs. Connie Thompson  
 Mrs. Mary Nan Thompson  
 Mr. Robert M. Thompson  
 Mr. and Mrs. Ronald A. Thompson  
 Mr. Steven R. Thompson  
 Mrs. T. Gale Thompson  
 Mr. and Mrs. Walton R. Thompson  
 Mrs. Diane Thorne  
 Mr. and Mrs. Gary R. Tipps  
 Mr. and Mrs. James M. Trautman

The Reverend Ted Voorhees  
 Mrs. Colleen M. Waffer  
 Ms. Margaret Lee Walker  
 Mr. Stephen F. Walker  
 The Reverend Randy L. Wall  
 Dr. Richard Walsh  
 Mrs. Jennifer A. Walters  
 Mr. and Mrs. Ray Walters  
 Mrs. Sue Wampler  
 Mr. and Mrs. Robert A. Ward  
 Mrs. Margaret Ward  
 Mrs. Jane Warfel  
 Mr. Donald M. Warren  
 Mr. and Mrs. George F. Warren  
 Ms. Jaylynn Warren  
 Mr. William C. Warren, Jr.  
 Mr. Eddie J. Washington  
 Mr. and Mrs. Jack Waterworth  
 Mrs. Joann Weary  
 Weaver Commercial Properties  
 Weaver Development Company  
 Mr. and Mrs. Robert B. Weavil  
 Mr. and Mrs. Glenn D. Welker

Mr. Billy J. Winston  
 The Reverend and Mrs. Gilliam Wise  
 Mr. and Mrs. Gerald D. Wisniewski  
 Mr. Richard J. Wittmann  
 Dr. Samuel Womack  
 Mrs. Deborah D. Wood  
 Mr. Ernest W. Woodcock  
 Mr. Mack V. Worley, Jr.  
 Mr. and Mrs. N. J. Worsham  
 Mr. Walker Y. Worth, III  
 Mrs. Lisa M. Wymer-Joyner  
 Mrs. Suzanne R. Yarborough  
 Ms. Sharon Yates  
 Mr. Farley Youman  
 Mr. and Mrs. James W. Young  
 Mr. Johnny G. Young  
 Ms. Rebecca Ann Younger  
 Mr. David L. Yount  
 Youth for Christ

## LUMNI

### CLASS OF 1964 41.46% - \$3,759.90

Mrs. Betty Graham Bunce  
 Mrs. Patricia Melvin Cashion  
 Mr. George F. Dempsey  
 Mr. S. Reese Edwards, Jr.  
 Mr. Donald J. Hilburn  
 The Reverend Jack M. Hunter  
 The Reverend James W. Johnson  
 Mrs. Virginia K. Kern  
 Mr. Oland B. Little  
 Mrs. Lucy Smith Martin  
 Mr. Amos W. McLamb  
 Mrs. Betty Neill Guy Parsons  
 Mr. Thurman L. Smith  
 Mr. Louis Spilman, Jr.  
 Dr. Harold J. Teague  
 Mr. William H. Walker, II  
 Mr. Jerry C. Wood, Sr.

### CLASS OF 1965 31.34% - \$4,573.33

Mr. Wayne Autry  
 Mrs. Donna Aldridge Autry  
 The Reverend Nancy Ruth Best  
 Mr. A. Paul Brill, III  
 CDR George S. Council, USN(Ret.)  
 Mrs. Billie Kelly Foushee  
 Mr. Larry Green  
 Mr. David Herring  
 Mr. Jerry A. Keen  
 Mr. C. DeWitt Lancaster, Jr.  
 Mr. Jerry G. Norris  
 Cpt. Orrin B. Powell, USN(Ret.)  
 Mr. Seldon B. Rapelye, Jr.  
 Mrs. Mary Ray Raynor  
 Mrs. Doris D. Rulnick  
 Mrs. Mary Ann Duncan Sharpe  
 Mrs. Suzanne Rouse Stork  
 Mr. Walter R. Turner  
 Mr. Charles T. Vest  
 Ms. Cynthia A. Walker  
 Mrs. Frances Abell Zeigler

### CLASS OF 1966 18.84% - \$2740.00

Mr. David A. Bass  
 Mr. Clyde C. Capps  
 Mr. G. Gordon Dixon  
 Mr. Murray O. Duggins  
 The Reverend Henry Boone Grant, Jr.  
 Mr. Tracy I. Hall, III  
 Mrs. Wanda Allen Herring  
 Lt. General James M. Link, USA  
 Mrs. Norma Bloh McNally  
 Mrs. Marie Zahran Reale  
 Mrs. Ella Rose Hall Smith  
 The Reverend Ted Voorhees  
 Dr. Thomas S. Yow, III

### CLASS OF 1967 33.33% - \$7,360.00

Mr. John Baranowski  
 Mr. Willie E. Bethune, Jr.  
 Mr. J. Spencer Birdsong  
 Mr. James A. Bledsoe



Mr. and Mrs. Wayne Tucker  
 Mrs. Jenny Turnage  
 Mr. and Mrs. R.L. Turnage  
 Mrs. Barbara L. Turner  
 Mr. Brian Turner  
 Mr. and Mrs. Steven Turner  
 Mr. Walter R. Turner  
 Ms. Jo Turpin  
 Mr. Robert B. Twine  
 Mrs. Mary M. Tyler  
 Mr. Wallace E. Tyson, Jr.  
 Mrs. Patricia J. Ulmer  
 Unilever United States Foundation, Inc.  
 Mr. and Mrs. Kermit L. Updegrave, Jr.  
 Mr. and Mrs. Mark T. Uselman  
 Mr. Chuck Uzzell  
 Mrs. Elaine Van Vliet  
 Ms. Cara R. Vandenberghe  
 Mr. and Mrs. Stanley A. Vandervort  
 Mr. Michael Vang  
 Mr. and Mrs. Louis J. Varga  
 Mr. Edgerton M. Vaughan  
 Mr. Richard W. Vaughan  
 Mrs. M. Elizabeth Ver Vaecke  
 Mr. Stephen Vang Vo

Mrs. Constance R. Wells  
 Mr. Daniel T. Wemyss, Jr.  
 Ms. Sharon Wentworth  
 Mrs. Margaret Mary Wertz  
 Mrs. Charlene A. Westergaard  
 Dr. Mary Wheeling  
 Mrs. Mary W. Whitaker  
 Mrs. Cynthia G. White  
 Mr. Frederick A. White  
 Mr. and Mrs. Ron White  
 Mr. Richard W. Whitfield  
 Mrs. Joanne S. Whitley  
 Mr. and Mrs. Robert L. Whittle  
 Wiener Works of Cumberland County  
 Mrs. LaRae T. Wiggins  
 Mrs. Donna Wiggs  
 Mr. and Mrs. Roderick Wilce  
 Mr. Lester M. Wilkins  
 Ms. Annie Mae Wilkinson  
 Dr. and Mrs. Henry Wilkinson  
 Ms. Darla R. Williamitis  
 Mr. Augusta Williams  
 Mr. Stephen A. Williams  
 Mr. Thomas W. Williams, Jr.  
 Dr. Paul F. Wilson





Mrs. Linda Campbell Carroll  
Mr. Edward M. Cozart  
Mr. Charles W. Davis, III  
Mrs. Diane Reid Gross  
Mr. John J. Haracivet, Jr.  
Mrs. Nancy Caughey LeVine  
Mrs. Ann L. Loyd  
Mr. Cabell Luck, Jr.  
Mr. Thomas H. Matthews  
Mr. Leslie J. Mengel  
Mr. Bradley B. Minshew  
Mrs. Martha McBryde Monroe  
Mr. Robert A. Nardone  
Mrs. Dianne P. O'Donnell  
Mrs. Mary Dark Osborne  
Mr. O. Charles Owen, Jr.  
Mrs. Mary Segeky Saunders  
Mr. Michael B. Saunders  
Mrs. Carolyn Nunery Sellers  
Mrs. Judith Bruton Sharpe  
Mrs. E. Ann McKnight Sutton  
Mrs. Mary Alice Hall Tarr  
Mr. William Tarr, II  
Mr. Robert M. Thompson  
Mrs. Barbara Houston Turner  
Mr. Daniel T. Wemyss, Jr.  
Mr. James M. Zeigler

**CLASS OF 1968**  
34.18% - \$13,113.41

Mrs. Barbara Meier Baranowski  
The Reverend Eddie Barber  
Mr. Randall H. Barnes  
Mr. William H. Billings  
Mrs. Kathy Richardson Borrelli  
Mr. Dennis L. Bruce  
Mrs. Catherine Bryant  
Mr. J. Michael Burns  
Mrs. Sandra Thomas Carter  
Mrs. Patricia Bracewell Clayton  
Mr. Terry F. Daniels  
Mr. James M. Fleishman  
Mrs. Sandra Jean Strickland Fleishman  
Mr. John H. Gardner  
Mr. L. James Gosier, Jr.  
Mr. Gordon B. Herbert  
Mrs. Gwen Pheagin Holtsclaw  
Mr. J. Stewart Humphrey  
Ms. Julia P. James  
Mrs. Brenda Moore Johnson  
Mrs. Barbara A. Bledsoe Jones  
The Reverend James R. Lancaster, Jr.  
Ms. Rosemary J. Lands  
Mrs. Barbara Simmons Lawson  
Mr. Rodney E. Legates  
Mr. John B. Lipscomb  
Mr. F. Milo McBryde  
Mr. Harvey S. McDannald, Jr.  
Mrs. Marsha L. Henry Nardone  
Mrs. Linda Massie Pyne-Hufnagel  
Mr. F. Patterson Quantz  
Mrs. Elaine W. Ratliff  
Mrs. Lydia Bryan Ricks  
Mrs. Linda Dept Schafer  
Mrs. Patricia Waterfield Ulmer  
Mrs. Charlene VanDerwater Westergaard  
Mr. Ernest W. Woodcock  
Mr. Mack V. Worley, Jr.  
Mrs. Mary Fermanides Wright  
Mr. David L. Yount

**CLASS OF 1969**  
31.14% - \$7,900.00

Mr. and Mrs. Stephen B. Atkinson  
Mrs. Carolyn Marks Baldwin  
Mrs. Appie Walton Bolton  
Mrs. Linda Bruton Bourland  
Mrs. Lynn Boone Breeden  
Ms. Paula May Caddell  
Mr. Curtis A. Cash  
Mrs. Elizabeth Yoder Chismark  
Mr. Samuel H. Compton, Jr.  
Mr. Wyatt S. Davis  
Mr. Richard L. Dean  
Mrs. N. Rebecca Clagett Dhyse  
Mr. Paul W. Dhyse  
Mrs. Diane Wilson Didden  
Mr. James B. Dillard  
Mr. A. G. Mason Dirickson  
Mrs. Marietta Moore Dixon  
Mr. Edward L. Dunn  
Mr. Maurice W. Elliott

Mrs. Jackie Jeffreys Estes  
Col. Richard H. Estes, USAF  
Mr. William P. Estes  
Mrs. Susan Keeth Fertel  
Mrs. Teena Thigpen Fraser  
Mrs. Nancy Thomas Gee  
Mr. James Groseclose  
Mrs. Jill Larue Groseclose  
Mrs. Judy Conard Gum  
Mrs. Jane Stuart Hale  
Dr. Michael L. Hale  
Mrs. Pamela Gardner Hanlin  
Mr. Steven H. Harden  
Mrs. Dianne Lowdermilk Harvey  
Mrs. Belinda Rouse Hawley  
Ms. Linda Perryman Holleman  
Mr. Robert Bruce Jervis  
Mr. Robert A. Jones, Jr.  
Mr. John A. Jordan, III  
Mrs. Patricia Barefoot Jorgenson  
Mrs. Sandra Ittenbach Kunbargi  
Mr. Rick Lindner  
Mrs. Patricia McCallum Livingston  
Mr. James F. Loschiavo  
Mr. David K. Marshall  
Mrs. Mary Etta Brooks McFadyen  
Mr. William Parker  
Mrs. Sylvia Gibson Parnell

Mr. Herbert R. Finger, Jr.  
Mrs. Karen Milner Freeman  
Mr. Robert L. Giannini, III  
Mr. Samuel P. Guy  
Mrs. Ann Young Hampton  
Mr. Charles S. Hester  
Mrs. Sharon Buser Irons  
Ms. Elizabeth Johnson  
Mr. William M. Lineberger  
Mrs. Diane Qualliotine Mann  
Ms. M. Regina McLaurin  
Mr. Rick Merrill  
Mr. Eugene Odom  
Mrs. Marianne Snowden Odom  
Mrs. Leta Smith Olson  
Mrs. Caroline R. Norman Pearce  
Mr. William W. Pearce  
Mrs. Frances Wilson Pearson  
Mrs. Ann Darden Pope  
Mrs. Laura Byrd Rambeaut  
Mrs. Janet Moyer Raskin  
Mr. Alan G. Schwint  
Dr. Sharon Scott Shaw  
Mr. Roger G. Simmons  
The Reverend Jesse C. Staton, Jr.  
Mr. Elvin T. Tatam  
Mr. M. R. Teer  
Mr. Steven R. Thompson

Mrs. Lynn Evans Midgett  
Mrs. Caroline C. Milner  
Mr. Jerry R. Monday  
Mrs. Sallie King Moody  
Mrs. Susan Garrick Motes  
Ms. Mary Helen Pearsall  
Mr. Robert D. Phillips  
The Reverend Dr. William M. Presnell  
Mr. John G. Roberts  
Mr. Raymond H. Roof, Jr.  
Mrs. Peggy Hale Scott  
Mrs. Lea Caviness Scott  
Mr. Steve J. Sims  
Mrs. Mary Alice Leimome Southerland  
Mr. Bruce Stevens  
Mrs. Linda Cherrix Stevens  
Honorable Leonard W. Thagard  
Mr. Ronald A. Thompson  
Mrs. Pamela Teer Whilden  
Mr. Stephen M. Whilden  
Mrs. LaRae Truckner Wiggins  
Mr. Dave T. Woodard

**CLASS OF 1972**  
20.73% - \$2,507.50

Mrs. Debbie Bright Beavers  
Mr. Charles W. Kip Broadfoot, III  
Mrs. Marie Averitte Cash  
Mrs. Lynn Gruber Clark  
Mr. Ronald K. Coleman  
Mr. William J. Costin, Jr.  
Mr. Christopher G. Drew  
The Reverend and Mrs. Kenneth Evans  
Mr. E. Wilson Fisher, Jr.  
Mrs. Gail Outlaw Graham  
Mrs. Judith Carroll Harrison  
Mr. and Mrs. Robert Jeffreys  
Mrs. Laura Heinz Kamionka  
Mrs. Mary Beth McKnight Laing  
Mrs. Susan Sanderson Lasater  
Ms. Hazel G. Linn  
Mr. Greg Liss  
Mrs. Jane Moore Liss  
Mr. Larry Lugar  
Mrs. Sharon St. Clair Lugar  
Mr. Stephen A. Magnotta  
Mr. Ronald N. McCullen  
Mr. Dick D. McInnis  
Mrs. Rainelle Dixon Mishoe  
Mrs. Janet Conard Mullen  
Mr. C. Kim Nazarchyk  
Mr. Larry W. Nunnery  
Mrs. Donna Shaw Pleasant  
The Reverend Michael W. Safley  
Mrs. Sue Hatch Smith  
Mr. W. Thomas Smith  
Ms. Edith Gray Tillman  
Mrs. Jenny Troyer Turnage  
Mr. Richard W. Vaughan



*Local youngsters inspect instruments just prior to the Fayetteville Symphony's Youth Concert in Reeves Auditorium.*

Mrs. Harriet B. Ransone-Smith  
Mrs. Janice Marcy Rhue  
Mrs. Marjorie L. Roof  
Mr. Thomas A. Sanders  
Mrs. Sharon Slade Sanders  
Mrs. Karabeth Mauney Schleich  
Mr. Raymond H. Smith, Jr.  
Mr. Frederick M. Stanton, Jr.  
Mrs. Sandra Johnson Stotler  
Mr. L. Thomas Swink  
Mr. Charles A. Teachey  
Mrs. Connie Underwood Thompson  
Ms. Sandra A. Wheeler  
Mrs. Mary Wingate Whitaker

**CLASS OF 1970**  
26.74% - \$15,041.20

Mr. Gregory C. Barnhart  
Mrs. Bonnie Briles Blue  
Mrs. Olivia Godwin Bradley  
Mr. L. Jefferson Bruton  
Mrs. Amelia Leimome Caison  
Mr. William B. Carstarphen  
Mrs. Sandra Matthews Carter  
Mrs. H. Emily Crowley  
Mrs. Leanah White Culbreth  
Mr. Robert L. Davis  
Mrs. Patricia Griggs DeNeal  
Mr. Frank F. Dixon  
Mr. W. Franklin Faulkner

Mrs. Gale Fields Thompson  
Mrs. Elizabeth Baldwin Ver Vaecke  
Mrs. Linda Hall Warren  
Mrs. Trudi Jaber Waters  
Mr. Harvey T. Wright, II

**CLASS OF 1971**  
24.71% - \$5,147.50

Mrs. Marilyn Every Atkinson  
Mr. John W. Brown  
Mr. John Butler  
Mrs. Lynn Moore Carraway  
Mrs. Julia Dixon Chandler  
Mr. Joe H. Clayton  
Mrs. Cynthia Hemsley Collver  
Mr. Gary S. Elefante  
Ms. Susan C. French  
Mrs. Valera Snider Gregory  
Mr. O. Alex Hager, II  
Mr. Alan Holden  
Mr. John T. Hughes, Jr.  
Mrs. Kathryn Holland Jeffreys  
Mrs. Laura Edwards Johnson  
Mr. Robert Johnson  
Dr. Thomas H. Jones  
Mr. Frederic J. Koch  
Mrs. Sandra L. Lineberger  
Mrs. Margaret A. Martin  
Mr. Joe Thomas Matthews  
Mr. Neal E. McLeod

**CLASS OF 1973**  
28.16% - \$19,387.75

Mrs. Kaye Corbin Bledsoe  
Mrs. Jo Anna Walker Brown  
The Reverend Wesley F. Brown  
Mr. John A. Butler  
Mr. D. Brian Cash  
Mr. Edwin Castle, II  
Mrs. Peggy J. Bland Chason  
Mr. Pete Chason  
Mr. Ernest L. Conner  
Mr. Eugene R. Cote  
Mrs. Bonnie Herring Crabtree  
Mr. John G. Chip Dicks, III  
Mrs. Rita J. Foley  
Ms. Penny C. George  
Ms. M. Janet Graham  
Mrs. Winifred McBryde Grannis  
Mr. W. Henry Grimsley, III  
Mr. Joe Bronner Harrill  
Mr. Billy Harrington  
Mr. J. C. Harris, III  
Mr. Reid A. Horne  
Mrs. Laurie Alston Jennings  
Mr. Vaughn John  
Mr. Kevin Jorgenson  
Mrs. Anita Fisher King  
Mrs. Susan Russell Lacy  
Mr. Evan H. Lacy, III  
Mrs. Dorothy Jane Delaney Landis  
The Reverend Henry W. Lec





Mr. Gary F. Lewis  
 Mrs. Marcia Vernberg Lewis  
 Mr. Ray Manning  
 Mr. Ralph P. Melvin  
 Mrs. Mary Neill Mercer  
 Mr. William C. Moore, Jr.  
 Mr. Jeffrey A. Olson  
 Mrs. Nell B. Palmer  
 Dr. Robert F. Philam  
 Mr. Larry S. Philpott  
 Mrs. Daryl Oglesby Poulk  
 Mr. J. Fletcher Poulk  
 CSM George D. Roraback Jr., USA (Ret.)  
 Mr. A. Robert Searle  
 Ms. Carolyn Terry Simpson  
 Mrs. Christine Gandy Slappay  
 Mr. Jerry F. Stone  
 Ms. Susan Strawn-Holloway  
 Mr. Ronald A. Sykes  
 Mr. James K. Waters, Jr.

Mrs. Rebecca Smith Spell  
 Ms. Judy Gore Spivey  
 Mr. Kenneth H. Sykes, Jr.  
 The Reverend Kenneth S. Valentine  
 Mr. Edgerton M. Vaughan  
 The Reverend Randy L. Wall

### CLASS OF 1975 18.65% - \$1,196.15

Mrs. Lynn Sloane Barnes  
 Mr. Wayne Barnes  
 Mrs. Lynda Buie Baum  
 Mr. William T. Bell  
 Mr. Samuel H. Brick, III  
 Mr. Harvey L. Burns  
 Mr. Turner F. Caldwell, III  
 Ms. Laura Dilworth  
 Mrs. Marsha Gooden Faucette  
 Mr. Clifford J. Gissell  
 Mr. John J. Grandefeld

Mr. Larry S. McMillin  
 Mrs. Brenda Hester Peregoy  
 Mr. Kenneth E. Reavis  
 Mrs. Sue Poorman-Duffitt Richards  
 Mrs. Denise Sykes

### CLASS OF 1977 15.07% - \$857.34

The Reverend Dr. Roger Braun  
 Ms. Muriel A. Brooks  
 Mr. Jack D. Brown, Jr.  
 Mr. John C. Capps  
 Mrs. Betty Jo Mitchell Dent  
 Mr. James E. Heath  
 Mrs. Cheryl Wardell Holladay  
 Mrs. Shirley Smith Juskowiak  
 The Reverend Victor C. Mansfield, II  
 Mrs. Yvonne Walker McDowell  
 Mrs. Mary Jane Miller  
 Mrs. Kay Mitchell Molnar  
 Mr. Larry Parsons  
 Mrs. Virginia M. Pierce  
 The Reverend Dennis Sheppard  
 Mrs. Colleen Warner Smith  
 Mrs. Rebecca Stephens Strickland  
 Mr. Eddie J. Washington  
 Mr. Johnny G. Young

### CLASS OF 1978 24.13% - \$895.00

Mr. David L. Adams  
 Ms. Paula L. Adams  
 Dr. Joseph Brum, Jr.  
 Mrs. Marie Beane Conner  
 Mr. Clifton S. Culbreth  
 Mrs. Sherrie Horne Culbreth  
 Mr. Richard B. Genter  
 Mr. Jeffrey D. Glendening  
 Mrs. Sue McLeod Glendening  
 The Reverend Claudia Gail Harrelson  
 Mr. Billy D. Horne, Jr.  
 SFC Oscar E. Lister, USA (Ret.)  
 The Reverend James E. Malloy, Jr.  
 Mr. R. Ken Martin  
 Mr. James R. McFayden, Jr.  
 Mr. Glen E. Meade, Jr.  
 Mrs. Margaret Farrior Pope  
 Mr. Thomas Pope, Jr.  
 Mrs. Sylvia Vessels Price  
 Mr. David L. Radford  
 Mrs. Elaine Lewis Van Vliet

### CLASS OF 1979 17.30% - \$747.50

Mr. Joseph Adams, Jr.  
 Mrs. Carol Sutton Barber  
 Mr. Charles W. Brown  
 Mr. William B. Crompton, III  
 The Reverend William E. Cummings  
 Mrs. Rosemarie Brantley Cunningham  
 Ms. Rhonda M. Dees  
 Mrs. Rhonda Gore Erherden  
 Mrs. Hilda Miles Graves  
 Mrs. Jane Stuart Hale  
 Mrs. Kimberly Earnhardt Hurley  
 Mrs. JoAnne Jones James  
 Mrs. Melissa Williams Johnson  
 Ms. Lois M. McPherson  
 Mr. Ernest W. Parker  
 Mr. Stephen Vang Vo  
 Mr. Stephen F. Walker  
 Mrs. Anne Fisk Wilce

### CLASS OF 1980 11.50% - \$1,245.00

Mrs. Susan Moore Baty  
 Mr. Dwight E. Cribb  
 Mrs. Victoria Saunders Etheridge  
 Mrs. Marselene Johnson  
 Mr. John M. Nelson  
 Mr. H. Oscar Queen, III  
 Ms. Diana L. Reichelderfer  
 Mrs. Barbara Ayers Sheppard  
 Mr. Larry S. Shreve  
 Mrs. Ruby Strouse  
 Mrs. Mary L. Talley  
 Mr. James J. Townsend  
 Mrs. Cynthia Gilliam White

### CLASS OF 1981 10.71% - \$1,625.00

LTC Mildred E. Blackwell, USA (Ret.)  
 Ms. Mary Gaye Borum  
 Mr. Andre Carson  
 Mrs. Tammy Bain Clemo  
 Mrs. Margaret D. Hyde Dixon  
 The Reverend Mark C. Mooney  
 Mrs. Kathy Southerland Stewart  
 Mr. Michael W. Strickland  
 Mr. Richard W. Whitfield

### CLASS OF 1982 10.78% - \$670.00

Mrs. Sylvia Tarrt Boland  
 Mr. Thomas L. Bosquet  
 Mr. David A. Castaneda  
 Mrs. Tammy Hightower Edens  
 Mr. Robert J. Flinn  
 The Reverend Phillip R. Glick  
 Mr. Mamoru Kubota  
 Mrs. Anne Barbee Story  
 Mrs. Diane Croom Thorne  
 Mr. Terry L. Tolbert  
 Ms. Mouzetta Zumwalt-Weathers

### CLASS OF 1983 14.89% - \$550.00

Major Allen L. Borgardt  
 Mr. W. Bradley Carter  
 Mr. John W. Chance, Sr.  
 Mrs. Beverly R. DenBleyker  
 Mr. Richard L. DePriter, Sr.  
 Mrs. Angela Gentry Dunkley  
 Ms. Mary Elizabeth Earp  
 Dr. Delbert D. Garrison  
 Mrs. Monica Herring Hardy  
 Mrs. Elaine Forbes Marshall  
 Mr. Terry A. Mitchell  
 Mr. Michael B. Szafranski  
 The Reverend Gilliam Wise  
 Mrs. Linda Trudeau Wise

### CLASS OF 1984 15.84% - \$1,237.64

Mrs. Linda Anderson Archer  
 Mr. David E. Auchmoody  
 Mr. Timothy J. Clemo  
 Mr. Michael W. Gonella, Sr.  
 Mr. Danny Hagans  
 Mrs. Michele Kildow  
 Mrs. Lynn Morton Kubota  
 Ms. Kathryn C. Lacey  
 Mrs. Donna Cahoon McGee  
 Mr. Neil McNeill  
 Miss Helen M. Pilkay  
 Ms. Dell Jean Sharpe  
 Mr. Michael Sokalski  
 Mr. John L. Vereen  
 Mr. Frederick A. White  
 Mrs. Shelia D. Yates-Mattingly

### CLASS OF 1985 17.85% - \$662.50

Mrs. Donna Stewart Beaman  
 Mr. Steven Paul Bohlin  
 Mrs. Terri Moore Brown  
 Mrs. Rena L. Elliott  
 Mr. Milton David Hall  
 Ms. Dorothy Hubbard  
 Mr. Patrick J. Koballa  
 Mrs. Claudia Hawthorne May  
 Mr. D. Scott Morgan, Sr.  
 Ms. Lisa A. Sessoms  
 Mr. George A. Small  
 Mrs. Anita Carroll Stephenson  
 Mrs. Dale Cook Swanner  
 Mr. Roderick Wilce  
 Mr. Andreas Winston



### CLASS OF 1974 22.75% - \$2,855.00

Mr. Barry A. Box  
 Mrs. Susan Myers Braun  
 Mrs. Marion Hawkins Bryant  
 Mrs. Susan Kastner Castle  
 Mr. James M. Chesnutt, III  
 Dr. Samuel J. Clark, III  
 Mrs. Marilyn Blodgett Cline  
 Mr. Les J. Colburn  
 Ms. Lee S. Crawford  
 Mr. Timothy A. Dennis  
 Mr. Danny R. Fowler  
 CW4 William Freeman, USA (Ret.)  
 Dr. William C. Harrison  
 Col. Clark W. Hastings, USA (Ret.)  
 Mrs. Belinda Branch Howard  
 Mr. Elmer C. Hubbard  
 Mr. J. Allen MacDonald  
 Mr. Alfred E. Marlowe  
 Mrs. Charlotte Moore McLaurin  
 Mrs. Margaret Cottingham Moody  
 Mr. Philip Mullen  
 Col. Marion D. Robertson, Jr.  
 The Reverend James Rowlette  
 Mrs. Mary Jane Gosier Rowlette  
 Ms. Lucia B. Safran  
 Mrs. Carmen Evans Smith  
 Mrs. Karla Jordan Smith

Mrs. Diane Myrick Haitcock  
 Mr. Jeffrey H. Haskett  
 Mrs. Pamela Yeatts Long  
 Mr. Alton E. Mabbs, Jr.  
 Mr. Stuart E. MacIntyre  
 Mr. Peter Marshall  
 Dr. Mary Anne Martin-Howell  
 Mrs. Betty L. Milligan  
 Mr. Royal P. Rogers, Jr.  
 Mr. Leslie E. Scott  
 Mr. Dwight Sheppard  
 Mrs. Jean S. Snively  
 Mr. J. Lee Warren, Jr.  
 Mrs. Deborah Dixon Wood

### CLASS OF 1976 20% - \$1,930.00

Mr. Levie C. Cameron  
 Ms. Karen L. Carlton  
 Mr. G. Thomas Dent  
 Mrs. Mildred Dexter-Rosell  
 Mrs. Patricia Poulk Driggers  
 Mr. Stephen Driggers  
 Mr. David L. Foster  
 Mrs. Ann Collier Horne  
 Mr. Henry G. Huataff, Jr.  
 Mrs. Joan Brosch John  
 Mrs. Constance Parrous Kotsopoulos  
 The Reverend J. Richard McDowell

**E**very effort has been made to insure that this report is complete and accurate. If we have omitted or misspelled a name, please contact the Office of Institutional Advancement at 1-888-221-4826, or (910) 630-7200.





**CLASS OF 1986**  
17.52% - \$795.00

Mrs. A. Christine Garvin Bolyard  
Mrs. Donna M. Bullard  
Ms. Donita B. Coleman  
Mrs. Kathleen Zambie Doody  
Mrs. Linda Nix Guzik  
Dr. Laura G. Kafka Ph.D.  
Mr. Stephen James Kay  
Mr. Keith Kildow  
Mrs. Jean Bunn Lemke  
CW2 Mark E. Moen, USA  
Mr. Craig A. Morris  
Mr. James J. O'Keefe  
Mrs. Carmen S. Pomeroy  
Mrs. Juanita Thompson Rose  
Mrs. Lynne Dawkins Smith  
Mrs. Sandra L. Smith  
Mr. Barry I. Souders

**CLASS OF 1987**  
9.56% - \$740.00

Major Peter D. Ahl  
Mrs. Sandra Lee Aman  
Mr. Sean Bermingham  
Mr. Donald R. Canady, Jr.  
Mrs. Ruth Rushton Crumley  
Mr. Fred Johnson  
Ms. Karen Renee McLeod  
Mr. Stanley D. Mozingo  
Mrs. Robin Swanson Register  
Mr. Forrest C. Shaw, III  
Mrs. Susan K. Smith

**CLASS OF 1988**  
16.32% - \$1,105.00

Mrs. Teresa Tripp Andrews  
Mr. Michael Bain  
Mrs. Renee Lupo Bain  
Mr. Darrell D. Bock  
Mrs. Betsy J. Ross Conner  
Mr. Roy J. Haddock  
Mrs. Valerie M. Gee Hagans  
Ms. Pamela S. Hoff  
Ms. Brenda G. Lockett  
Mr. Larry L. Martens  
Ms. Christa M. O'Quinn  
Ms. Michele Partida  
Mr. Reed P. Swanson  
Mr. William C. Warren, Jr.  
Mrs. Joanne S. Whitley  
Cpt. Teresa Bowling Wolfgang

**CLASS OF 1989**  
15.95% - \$1,588.70

Mrs. Dawn Fountain Ausborn  
Ms. Angela J. Benjamin  
Mrs. Janet Balzer Bone  
Ms. Joy A. Bonhurst  
Mrs. Sharon R. Bullard  
CO3 Steven G. Creech  
Mr. Paul A. Daniels  
Mrs. Jill Starke Gallen  
Mr. Trent A. Gregory  
Mr. Bobby Hill  
Ms. Janice E. Humphreys  
Mr. Richard Johnson  
Mrs. Wendy Webb Johnson  
Ms. Shirleen Mack  
Mrs. Kathy D. McPhail  
Ms. Kimberly F. McPhail  
Mrs. Kathryn Small Offenhauser  
Mr. Terry D. Ogerly  
Mr. Ronald K. Phipps  
Mr. Terry D. Preiss  
Mrs. Lydia B. Smith  
CW3 James F. Stroud, USA (Ret.)  
Mr. Robert B. Twine  
Mr. Wallace E. Tyson, Jr.  
Ms. Laura Vigari  
Mrs. Lisa M. Wymer-Joyner

**CLASS OF 1990**  
13.83% - \$995.00

Mrs. Lovia Anne Barefoot  
Ms. Elizabeth Ann Brantley  
Mr. Richard C. Briggs, Jr.  
Mrs. Janet Copeland Carter

Mr. Marty Van Cayton  
Mrs. Mithu Chaudhuri  
Mr. Gregory G. Dirks  
Mrs. Jody L. Briggs Dirks  
Ms. Rhonda C. Faircloth  
Cpt. Jay B. Fullerton, USA  
Mr. Ernest Wayne Hall  
Mrs. Stephanie D. Johnson  
The Reverend Linda K. Karalfa  
Ms. Sarah C. Lee  
Mrs. Rita M. Marshall  
Mrs. Mara I. Padilla  
Mr. Edward A. Perry  
Mr. Victor Jose Roman-Orriz  
Mrs. Denise Duggins Smith  
Mrs. Mary Nan Ciamp Thompson  
Mrs. Margaret Mary Young Wertz  
Mr. Doug E. Wolfgang, Jr.

**CLASS OF 1991**  
10.96% - \$782.50

Mr. Daniel D. Brock  
Mrs. Cheryl Bueck  
Mr. Brian K. Cole  
Mrs. Christy Clayton Cole  
Mrs. Sylvia Brown Davis  
Mr. Brian D. Dougherty  
Mrs. Jane Jordal Folkerts  
Mrs. Gwendolyn L. Ford  
Mrs. Katherine Leith Fraley  
Mrs. Jolie Kurtz LaVoie  
Mrs. Barbara J. Overman  
Mr. Wayne Parsons  
Mr. Richard L. Player, III  
Ms. Krista L. Riley  
Mrs. Cheryl Ann Schroeder-Thomas  
Mr. James B. Smith  
Mr. Leighton A. Thomas  
Mr. Herman P. Williams

**CLASS OF 1992**  
8.83% - \$3,144.11

Ms. Alice Cashwell  
Mr. Brian D. Cuppett  
Ms. Denise L. Darby-Hysell  
Mr. David W. Edwards, Sr.  
Mr. Barnett H. Hill  
Mr. Timothy Holtsclaw  
Mr. Mark L. Lange  
Mr. James A. Maher  
Mr. Bryan W. May  
Mrs. Marian Moorman Morgan  
Mrs. Melissa Mearns Ohlmacher  
Ms. Carol B. Peterson  
Mr. Robert J. Pilewski  
Mr. Thomas E. Rittenhouse  
Mr. Michael A. Stone  
Mrs. Joann Weary  
Ms. Rebecca Ann Younger

**CLASS OF 1993**  
16.07% - \$1,102.50

Mr. Jeffrey D. Alton  
Mrs. Mary T. Andersen  
Mr. Eric Lee Barto  
Mr. Richard S. Cutler, Jr.  
Mrs. Janice C. Erne-St. Onge  
Mrs. Catherine Krause Flores  
Mrs. Jo Ann Kopp Griffel  
Ms. Cathy S. Griffith  
Mr. Philip Jennings Hedgepeth  
Mrs. Caroline F. Kearns  
Mrs. Misty Kaye Looney  
Ms. Tracy L. Maness  
Mr. David E. Maxwell, Jr.  
Mr. Thomas C. Maze  
Mrs. Joan Walker Miller  
Mr. Mark A. Morris  
Mrs. Jennifer Weyandt O'Keefe  
Mr. James Ohlmacher  
Mr. Richard S. Pope  
Mr. James J. Rapalje  
Mrs. Julia E. Parrish Riddle  
Mr. Michael Riddle  
Mrs. Angela Langston Rimm  
Mr. John Rimm  
Mrs. Karen Smith Roberts  
Mr. Dennis D. Swan  
Mr. Lester M. Wilkins  
Mr. Richard J. Wittmann

**CLASS OF 1994**  
10.86% - \$1,616.72

Mrs. Julia G. Abner  
Mrs. Lynley Fenwick Asay  
Mr. Brian W. Bishop  
Mrs. Jan Walls Bock  
Mrs. Amy E. Brace  
1Lt. Cynthia A. Evelyn  
Mrs. Michele Anderson Givens  
Mrs. Patricia H. Hales  
Mrs. Debra Craddock Johnson  
Mr. James E. Justice  
Ms. Aimee R. Linder  
Mrs. Constance Clow May  
Ms. Kristin M. Payne  
Mrs. Melinda S. Raynor  
Ms. Sarah J. Shew  
Mrs. Dolores Blanton Strickland  
Mrs. Jennifer Payson Walters

**CLASS OF 1996**  
10.25% - \$882.00

Mrs. Lisa G. Barbee  
Mrs. Jodie Owen Bullard  
Mr. Eusebius P. Cadet  
Mr. Matthew E. Christian  
Mrs. Robin C. Christine  
Mr. Brett Giancanelli  
Mrs. Leigh Watkins Giancanelli  
Mr. David M. Connolly  
Ms. Kellie S. Fernandez  
Mr. Daryl L. Hales  
Ms. Stacey I. Harper  
Ms. Patty Howard  
Ms. Michelle A. Jahren  
Mrs. Margo M. Jarvis  
Mr. Jerry L. Lowenstein  
Mrs. Joy Gilbert Ludwick  
Mr. Brian R. Rodgers



**CLASS OF 1995**  
12.04% - \$970.00

Mr. Gregory Banner  
Mrs. Julie Davis Barefoot  
Ms. Camisha M. Bell  
Mr. Chyenne J. Brooks  
Mrs. Yvette Jackson Carson  
Mrs. Mary B. Choi  
Mrs. Dayna J. Collins  
Mr. Robert J. Cooper  
"Mr. Seth T. Cox, II"  
Mr. David W. Distefano  
Mrs. Karen R. Dorman  
Mr. Michael Graham  
Ms. Katherine Hammill  
Ms. Jennifer Hersey  
Mr. Ron LaVoie  
Ms. Kimberly A. Miller\*  
Ms. Stephanie R. Nicholson  
Ms. Teresa C. Owens  
Mrs. Kandice L. Pedley  
Mrs. Sophia A. Scott  
Mr. Kevin M. Starke  
Mrs. Pamela Wimley Strickland  
Ms. Cara R. Vandenberghe

Mr. Jose C. Rodriguez  
Mr. Jeremy R. Sachs  
Mrs. Debbie W. Starling  
Mrs. Naomi R. Sullivan  
Mr. Quincy A. Tarrance  
Mrs. Colleen Baldrige Waffer  
Mrs. Jennifer Payson Walters

**CLASS OF 1997**  
12.74% - \$1,135.00

Ms. Elizabeth C. Black  
Mr. Kristopher Broneill  
Mr. Anthony J. Bugeja  
Mr. John N. Bumgarner  
Mr. Barry C. Childress  
Mr. Thomas D. Chipman  
Mr. David W. Clark  
Mr. John P. Coughlin  
Mr. Bobby R. Dorman  
Mr. James Drury, III  
Mr. Joshua B. Franklin  
Mrs. Norma Gizoni  
Ms. Christine Hopper





Ms. Patricia A. Hurley  
 Mrs. Tamera M. Josephson  
 Ms. Carina Lindley  
 Mr. Michael J. Lysek  
 Mr. Darrell E. Maloy  
 Ms. Candice R. Martin  
 Ms. Leslie Miller  
 Mr. William D. Parker  
 Mr. Kerry D. Pope  
 Ms. Vernell P. Sharpe  
 Mr. David A. Teague  
 Mr. Alan Terrell  
 Mrs. Constance R. Wells

Ms. Arlaine Goforth  
 Mr. Michael Graham  
 Mrs. Hilda Graves  
 Mrs. Valera D. Gregory  
 Ms. Denise A. Guidotti  
 Mrs. Linda Nix Guzik  
 Mrs. Diane Haitcock  
 Mr. Daryl L. Hales  
 Mrs. Patricia H. Hales  
 Mrs. Paula J. Hales  
 Mr. Milton David Hall  
 Mr. Eugene S. Hallock

Mr. Rodney E. Legates  
 Mr. Mark Lindner  
 Ms. Brenda G. Lockett  
 Mrs. Pamela Y. Long  
 Mr. Jerry L. Lowenstein  
 Mr. Michael J. Lysek  
 Mr. Anthony P. Maki  
 Ms. Candice R. Martin  
 Mrs. Donna L. McGee  
 Mr. Dick D. McInnis  
 Mr. Neal E. McLeod  
 Mrs. Norma B. McNally

Mr. Kerry D. Pope  
 Mr. Seldon B. Rapelye, Jr.  
 Mrs. Melinda S. Raynor  
 Mrs. Lydia B. Ricks  
 Mr. Jose C. Rodriguez  
 Ms. Wilhemeina Ross  
 Mr. Charles E. Routh  
 Ms. Lucia B. Safran  
 Mr. Leslie E. Scott  
 Mrs. Sophia A. Scott  
 Mrs. Lea Caviness Scott  
 Ms. Vernell P. Sharpe  
 Mr. Steve J. Sims  
 Mrs. Carmen E. Smith  
 Ms. Judy Spivey  
 Mrs. Debbie W. Starling  
 Ms. Melissa L. Stout  
 Mr. Dennis D. Swan  
 Mrs. Dale Swanner  
 Mrs. Mary Alice Tarr  
 Mr. William Tarr, II  
 Mr. Quincy A. Tarrance  
 Mr. Charles A. Teachey  
 Mr. David A. Teague  
 Mrs. Mary Nan Thompson  
 Mrs. Jenny Turnage  
 Mrs. Barbara L. Turner  
 Mrs. Elaine Van Vliet  
 Mr. John L. Vereen  
 Ms. Laura Vigari  
 Mrs. Jennifer A. Walters  
 Mrs. Constance R. Wells  
 Mrs. Mary W. Whitaker  
 Mr. Frederick A. White  
 Mr. Roderick Wilce  
 Ms. Darla R. Williamitis  
 Cpt. Teresa D. Wolfgang  
 Mrs. Suzanne R. Yarbrough  
 Mr. Johnny G. Young  
 Mr. David L. Yount

## CLASS OF 1998

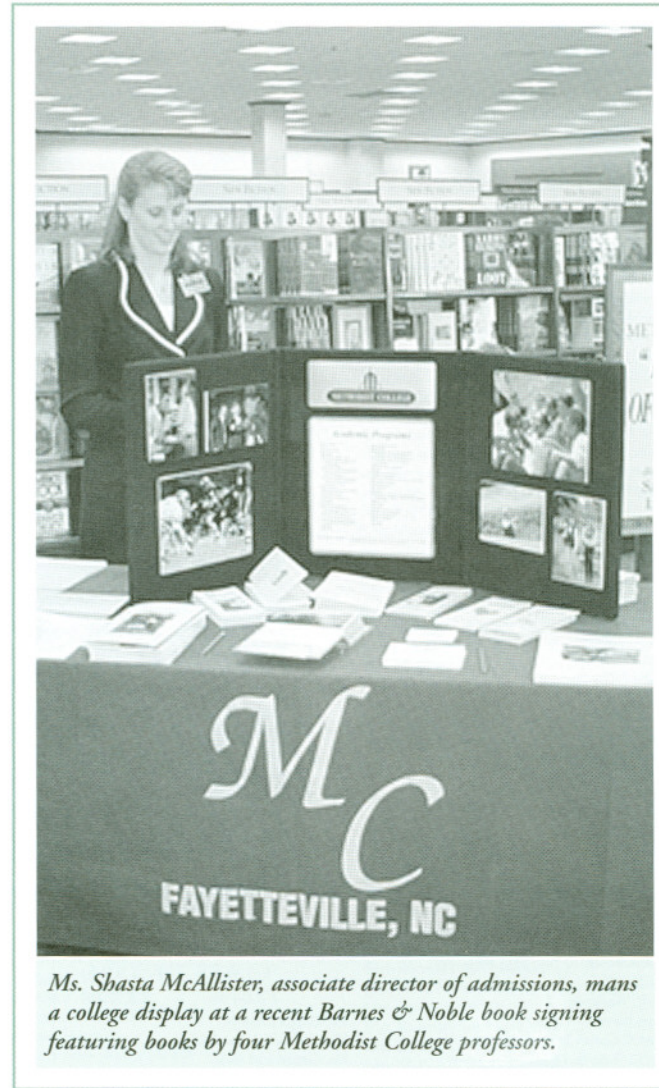
6.06% - \$445.00

Ms. Cynthia B. Allen  
 Mrs. Lara Lee Bugeja  
 Mrs. Martha Alexander Clarke  
 Mr. Eugene S. Hallock  
 Ms. Janet K. Hassenplug  
 Mr. Travis T. Kornegay  
 Mr. Mark Lindner  
 Mr. Anthony P. Maki  
 Mrs. Sonya S. Murdock  
 Ms. Wilhemeina Ross  
 Mr. Charles E. Routh  
 Ms. Melissa L. Stout  
 Ms. Darla R. Williamitis  
 Mrs. Suzanne R. Yarbrough

## FIRST TIMERS

The following alumni joined classmates in support of the annual fund for the first time in 1998.

Mr. David L. Adams  
 Mr. Joseph Adams, Jr.  
 Ms. Cynthia B. Allen  
 Paul J. Amaral  
 Mrs. Mary T. Andersen  
 Mr. B. Wayne Autry  
 Mrs. Donna Autry  
 Mr. Michael Bain  
 Mrs. Renee Lupu Bain  
 Mr. Gregory Banner  
 Mrs. Lisa G. Barbee  
 Mrs. Carol S. Barber  
 Mrs. Lovia Anne Barefoot  
 Mrs. Julie Barefoot  
 Mr. Sean Bermingham  
 Mr. Brian W. Bishop  
 Ms. Elizabeth C. Black  
 Mrs. Bonnie B. Blue  
 Ms. Mary Gaye Borum  
 Mr. Robert S. Brodie, Jr.  
 Mr. Kristopher Broneill  
 Mr. Chyenne J. Brooks  
 Mr. Charles W. Brown  
 Mr. Anthony J. Bugeja  
 Mrs. Lee Jones Bugeja  
 Mr. John N. Bumgarner  
 Mr. Eusebius P. Cadet  
 Mr. John C. Capps  
 Ms. Karen L. Carlton  
 Mrs. Linda G. Carroll  
 Mr. Marty Van Cayton  
 Mr. Thomas D. Chipman  
 Mr. Matthew E. Christian  
 Mrs. Martha A. Clarke  
 Mrs. Tammy B. Clemo  
 Mr. Timothy J. Clemo  
 Mr. Les J. Colburn  
 Mrs. Dayna J. Collins  
 Mr. David M. Connolly  
 Mr. John P. Coughlin  
 Mr. Seth T. Cox, II  
 Ms. Rhonda M. Dees  
 Mr. Richard L. DePritter, Sr.  
 Mrs. Diane B. Didden  
 Mr. David W. Distefano  
 Mr. Bobby R. Dorman  
 Mr. James Drury, III  
 Mrs. Gail W. Ellis  
 Mr. Joshua B. Franklin  
 Mr. Richard B. Genter  
 Mrs. Michele A. Givens  
 Mrs. Norma Gizoni



Ms. Shasta McAllister, associate director of admissions, mans a college display at a recent Barnes & Noble book signing featuring books by four Methodist College professors.

Mrs. Monica J. Hardy  
 Mr. Joe Bronner Harrill  
 Ms. Janet K. Hassenplug  
 Mr. James E. Heath  
 Mr. Philip Jennings Hedgepeth  
 Mrs. Cheryl W. Holladay  
 Ms. Christine Hopper  
 Mr. Billy D. Horne, Jr.  
 Ms. Patty Howard  
 Mrs. Kimberly A. Hurley  
 Mr. and Mrs. Fred Johnson  
 Mrs. Marselene Johnson  
 Mrs. Barbara A. Jones  
 Mrs. Tamera M. Josephson  
 Mr. Travis T. Kornegay  
 Mrs. Constance P. Kotsopoulos  
 Mrs. Mary Beth Laing  
 Mrs. Susan Sanderson Lasater  
 Ms. Sarah C. Lee

Ms. Lois M. McPherson  
 Mrs. Mary Mercer  
 Ms. Kimberly A. Miller  
 Ms. Leslie Miller  
 CW2 Mark E. Moen, USA  
 Mrs. Martha Monroe  
 Mr. William C. Moore, Jr.  
 Mr. Mark A. Morris  
 Mrs. Sonya S. Murdock  
 Mr. C. Kim Nazarchyk  
 Mr. John M. Nelson  
 Mr. James J. O'Keefe  
 Mrs. Jennifer D. O'Keefe  
 Mr. Terry D. Ogerly  
 Mr. O. Charles Owen, Jr.  
 Ms. Teresa C. Owens  
 Mrs. Mara I. Padilla  
 Mrs. Sylvia G. Parnell  
 Mr. Robert D. Phillips

## PARENTS

Ms. Genie E. Addeleton  
 Mr. E. D. Alcorn  
 Dr. and Mrs. Grant L. Alleyne  
 Mr. and Mrs. Joseph Almeida, Jr.  
 Mr. and Mrs. Robert L. Armfield, Jr.  
 Ms. Mary Arnold  
 Mrs. Jean M. Aswad  
 Mr. and Mrs. James Arwell  
 Mr. and Mrs. Joseph J. Bajkowski  
 Mr. and Mrs. Donald E. Baldwin  
 Mrs. Carol S. Barber  
 The Reverend Eddie Barber  
 Ms. Frances R. Barnes  
 Mr. and Mrs. John R. Beaman  
 Mrs. Ruthann Bindewald  
 Mr. and Mrs. Raymond Bohn  
 Mr. and Mrs. Joseph J. Bonargo  
 Mr. and Mrs. Kenneth Boone  
 Mr. and Mrs. R. S. Bossung  
 Mr. and Mrs. Ellison Bowman  
 Mr. and Mrs. David M. Brandenburg  
 Mr. Charles Brouwer  
 Ms. Veronica Brown  
 Ms. Martha Bryant  
 CW4 and Mrs. Harry J. Byard  
 Mrs. Lynda A. Campbell  
 Mr. and Mrs. Charles Capalbo  
 Mr. and Mrs. Danny Cassidy  
 Mr. and Mrs. Joseph Chandless  
 Mr. and Mrs. Richard F. Christiana  
 Dr. and Mrs. Louis P. Clark  
 The Reverend and Mrs. James H. Coile  
 Mr. and Mrs. John E. Coker  
 Mrs. Kathryn Collins  
 Mr. and Mrs. Thomas Colucci  
 Mr. and Mrs. Steven M. Connor  
 Mr. and Mrs. Harry Curran  
 The Reverend M. F. Daniel  
 Mr. and Mrs. James Davis  
 Mr. Jim Davis  
 Mr. and Mrs. C. Robert Dawson  
 Mrs. Patricia DeLapa  
 Mr. and Mrs. N. H. Dement, Jr.  
 Mr. Richard L. DePritter, Sr.  
 Mr. Vince Derosa  
 Ms. Janis H. Devalles  
 Mr. and Mrs. Joseph DeVoldre  
 Mr. and Mrs. William Dickerson





Mr. and Mrs. Raymond W. Dombrowsky  
 Mrs. Karen R. Dorman  
 Ms. Jacklyn Downes  
 Mr. and Mrs. Frank H. Dzielecki  
 The Reverend and Mrs. Ronald F. Estes  
 Mr. and Mrs. Alfred E. Fabrico  
 Mr. and Mrs. Danny G. Fann  
 Mr. and Mrs. Tim J. Finan  
 Mr. and Mrs. George Fisher  
 Mr. and Mrs. Claude A. Foster, Jr.  
 Mr. and Mrs. Steve Gage  
 Mr. and Mrs. Frank Gagliano  
 Mr. and Mrs. A. Ken Gault, Jr.  
 Mr. and Mrs. Carrel Gay  
 Mr. and Mrs. David L. Gdovin  
 Mr. and Mrs. Woody Gentry  
 Ms. Mary Gibson  
 Mr. and Mrs. Sammy L. Gilmore  
 Mr. and Mrs. Michael A. Giossi  
 Ms. Geraldine Gladden  
 Mr. and Mrs. Earl E. Gottsman  
 Mr. Daniel Gourley  
 Mr. and Mrs. Manning R. Gray, Jr.  
 Mr. and Mrs. Richard Gromolovits  
 Dr. and Mrs. Lavelly D. Gruber  
 Mr. and Mrs. Mark A. Gusso  
 Mr. and Mrs. John C. Hadden  
 Mr. and Mrs. Philip M. Haile  
 Mr. and Mrs. Glenn C. Hanna  
 Ms. Helen Hanna  
 Mrs. Anita S. Harding  
 Mr. and Mrs. Robert Harrington  
 Mr. and Mrs. Ricky Hart  
 Mr. and Mrs. Martin J. Hering  
 Ms. Phyllis Hines  
 Mr. and Mrs. Wallace Holmes  
 Mr. Chester Homicki  
 Ms. Kay Hooks  
 Mr. and Mrs. Shelley Hugus  
 Mrs. Gayle Jacobs  
 Mr. and Mrs. Edward M. Janis  
 Mrs. Brenda W. Johnson  
 Mr. and Mrs. Daniel Johnson  
 Mr. and Mrs. Ronnie K. Johnson  
 Mr. and Mrs. Donald R. Jones  
 Mrs. Rebecca Jones  
 Mr. and Mrs. Dale Justice  
 Ms. Susan A. Justice  
 Mr. and Mrs. Walter L. Kerley, Jr.  
 Mr. and Mrs. Ronnie Ketchie  
 Mr. John Killen  
 Mr. and Mrs. George King  
 Mr. and Mrs. Kevin Koket  
 Mr. and Mrs. Don H. Landreth  
 Mr. and Mrs. Jimmy Larrimore  
 Mr. and Mrs. Donald Lavertu  
 Ms. Teresa LaVoie  
 Mr. and Mrs. Wilbur J. Lawson  
 Mr. and Mrs. Howard Leece  
 Mr. and Mrs. John Leidner  
 Mr. and Mrs. Raymond J. Licata  
 Mr. Jeff Locklear  
 Ms. Barbara Lowry  
 Mr. and Mrs. Richard Y. Lyons  
 Dr. and Dr. Thomas N. Maki  
 Mr. Charles W. Malloy  
 Mr. and Mrs. Gary Marsh  
 Mr. and Mrs. Robert Marshburn  
 Mr. and Mrs. Leonard A. McCauley  
 Mr. Neal E. McLeod  
 Mr. Richard McMahon  
 Mrs. Jennifer McVeigh  
 Ms. Eunice H. Mellott  
 Mrs. Mary Mercer  
 Mr. and Mrs. Richard Meyerrose  
 Mr. and Mrs. Robert J. Miano  
 Mr. and Mrs. Robert C. Miller  
 Mr. and Mrs. Thomas Mitchell  
 Ms. Nancy Moffitt  
 Ms. Maureen M. Molter  
 Mr. and Mrs. Doug Moore  
 Mr. and Mrs. Levy Moore  
 Mr. and Mrs. Donald E. Moss  
 Mrs. Deborah Motte  
 Mr. and Mrs. Dennis W. Mullins  
 Mr. and Mrs. Ocie F. Murray, Jr.  
 Mrs. Claudia J. Myers  
 Mr. and Mrs. Stuart A. O'Bier  
 Mr. and Mrs. Charles M. Ollinger  
 Mr. and Mrs. Gary Olney  
 Mr. and Mrs. Jimmy Parker  
 Mr. and Mrs. Ted W. Parker

Mrs. Sylvia G. Parnell  
 The Reverend Carrie W. Parrish  
 Mrs. Betty Neill Parsons  
 Mr. and Mrs. Larry Parsons  
 Mr. Mark B. Patten, III  
 Mr. and Mrs. Nelson E. Patterson  
 Mr. and Mrs. William A. Pettit  
 Mr. and Mrs. John D. Picciano  
 Ms. Georgette K. Picu  
 Mr. and Mrs. Pipkin  
 Mr. and Mrs. Thomas E. Powell  
 Mr. Terry D. Preiss  
 Mr. and Mrs. Eric D. Qually

Mr. and Mrs. James A. Schuermann  
 Mr. and Mrs. Lassie L. Scott, Jr.  
 Mr. and Mrs. George M. Shroyer  
 Mr. and Mrs. Ronald Shuey  
 Mr. and Mrs. James Simmons  
 Mr. and Mrs. Clifford G. Singletary  
 Mrs. Laurier Sirois  
 Mr. and Mrs. Doug Smedberg  
 Mr. and Mrs. David E. Smith  
 Mr. and Mrs. Jack Smith  
 Mr. and Mrs. Anatol Sokolov  
 Mr. and Mrs. Thomas H. Stanley  
 Mr. and Mrs. Kim L. Steffanni



*Brandy McCollum (#25), drives against Christopher Newport. Triba Williams (#14) and Amy Todd (#33) come in to help. The Lady Monarchs finished the '98-'99 campaign as DIAC co-champions.*

Mr. and Mrs. Buford M. Quay  
 Mr. and Mrs. Donald L. Rastede  
 Mr. Wilson Ray  
 Mr. and Mrs. Jack H. Reed  
 Mr. and Mrs. Benjamin D. Robinson, III  
 Mr. and Mrs. Edward G. Robinson  
 Ms. Gloria Rodriguez  
 Mr. and Mrs. Ramon Rodriguez  
 Mr. and Mrs. Anthony Ruf  
 Mr. and Mrs. Charles Ruffing  
 Mr. and Mrs. William Saam  
 Mr. and Mrs. Roger Sanchez  
 Ms. Theresa Sasin  
 Ms. Patricia Scali  
 Mr. and Mrs. Jay Schablik  
 Mr. and Mrs. James T. Schalla, Jr.  
 Mr. and Mrs. John H. Scharf  
 Ms. Gwen Scholl

Ms. Thomasina Sturdivant  
 Mr. Daniel H. Suitch  
 Mr. and Mrs. John Sullivan  
 Mr. and Mrs. R. G. Taylor  
 Mr. and Mrs. Gary R. Tipps  
 Mr. and Mrs. James M. Trautman  
 Mr. and Mrs. Wayne Tucker  
 Mr. and Mrs. Robert Turner  
 Mr. and Mrs. Steven Turner  
 Mr. and Mrs. Kermit L. Updegrave, Jr.  
 Mr. and Mrs. Mark T. Uselman  
 Mr. and Mrs. Stanley A. Vandervort  
 Mr. and Mrs. Louis J. Varga  
 Mr. and Mrs. Ray Walters  
 Mr. J. Lee Warren, Jr.  
 Mrs. Linda H. Warren  
 Mr. and Mrs. Jack Waterworth  
 Mr. and Mrs. Glenn D. Welker

Ms. Sharon Wentworth  
 Mr. Stephen A. Williams  
 Mr. Billy J. Winston  
 Mr. and Mrs. Gerald D. Wisniewski  
 Mr. and Mrs. N. J. Worsham  
 Mr. and Mrs. James W. Young

## TRUSTEES

Mr. Frank Barragan, Jr.  
 Mr. James A. Bledsoe  
 Mr. Dohn Broadwell  
 Mrs. Mary Lynn Bryan  
 Mr. Howard Bullard  
 Dr. Loleta W. Foster  
 Mr. John B. Gillam, III  
 Mrs. Betty U. Hasty  
 Mrs. Jane Hook Johnson  
 Dr. J. Wesley Jones  
 Mr. Jerry A. Keen  
 Mr. Jack R. Lindley  
 Dr. William P. Lowdermilk  
 Mr. Richard L. Player, Jr.  
 Reverend Dr. William M. Presnell  
 Mrs. Sarah C. Reeves  
 Mrs. March F. Riddle  
 Reverend J. Thomas Smith  
 Mr. Louis Spilman, Jr.  
 Dr. Frank Stout  
 Mr. R. Dillard Teer  
 Ms. Terri Union  
 Mr. Joe W. Walker  
 Mr. William R. West, Sr.  
 Mr. Harvey T. Wright, II  
 Mr. John W. Wyatt  
 Mr. Ramon L. Yarborough

## SCHOLARSHIPS

B. F. Stone Scholarship  
 Brantley Memorial Scholarships  
 The Florence Rogers Charitable Trust  
 General Board of Higher  
 The Highlander Doll Club  
 North Carolina Conference UMC  
 Pilot Club of Fayetteville  
 Triangle Community Foundation

## FRIENDS

Mr. and Mrs. J. Guy Abell  
 Mr. and Mrs. Maness I. Adcox  
 Mr. and Mrs. Ron Alberson  
 Ms. Joan English Allen  
 Ms. Katherine B. Allred  
 Mr. and Mrs. Jerry L. Alphin  
 The Reverend Chester J. Andrews  
 Arran Realty, Inc.  
 Mr. John D. Ashford  
 Mr. and Mrs. C. W. Ashley  
 Dr. and Mrs. Christopher T. Aul  
 The Reverend James A. Auman  
 Mr. and Mrs. Von Autry, Jr.  
 Mr. William L. Aycock  
 Mrs. June Ayse  
 Mr. George Baca  
 Mr. and Mrs. Jasper L. Baggett  
 Pat B. Bailey  
 Mr. and Mrs. Dan T. Barker  
 Mr. Frank Barragan, Jr.  
 Ms. Karen T. Barrow  
 Mr. and Mrs. Reginald M. Barton, Sr.  
 Mr. and Mrs. Howard Baulch  
 Ms. Edna Baxley  
 Mr. and Mrs. Ronald L. Beaver  
 Mrs. Lee C. Beck  
 Ms. Mary Becton  
 Mr. and Mrs. Robert M. Bennett  
 Ms. Willa Bennett  
 Mr. and Mrs. Terry C. Bibleheimer  
 Mr. and Mrs. Marion P. Bishop  
 Mr. W. A. Bisette  
 Mrs. U. B. Blalock, Jr.  
 Mr. Steven K. Blanchard  
 Mr. Graham B. Blanton  
 Mr. Robert Blecker





Mr. William Bowman  
 Mr. and Mrs. C. Delaine Bradsher  
 Mr. Mark T. Branch  
 Mr. John C. Brandt  
 Ms. Martha W. Brannock  
 The Honorable and Mrs. E. Maurice Braswell  
 Briggs & Sons Tire  
 Mr. Hal Broadfoot, Jr.  
 Mr. Charles Broadwell  
 Mrs. Nancy W. Broadwell  
 Ms. Alice M. Brock  
 Mr. and Mrs. E. Clayton Brock, Jr.  
 Mr. and Mrs. Richard D. Brock  
 Mr. and Mrs. Edwin N. Brower, Jr.  
 Mr. and Mrs. L. Nelson Brown  
 Mr. Richard A. Bryant  
 Ms. Sarah C. Bryant  
 Mr. and Mrs. Robert L. Buehrle  
 Ms. Beverly M. Buie  
 Mrs. Donna M. Bullard  
 Mrs. Kathryn G. Bundy  
 Mr. and Mrs. Kenny M. Burke, Jr.  
 Mrs. Susan Butler  
 Mr. Jesse H. Byrd, Jr.

Mrs. Mary Pride Clark  
 Mr. John W. Cline, Jr.  
 Mr. and Mrs. Michael W. Cobb  
 Mr. and Mrs. Richard H. Cockman  
 Dr. and Mrs. Charles Q. Coffman  
 Mr. and Mrs. C. Wayne Collier  
 Mrs. Mary Elizabeth Collier  
 Mr. Norman A. Coltrane  
 LTC and Mrs. J.A. Conley  
 Mr. and Mrs. Ernest L. Conner  
 Ms. Patsy A. Conoley  
 Mr. Gary W. Cooper  
 Mr. and Mrs. Jim Copland  
 Mrs. Floried J. Core  
 Mr. and Mrs. Joe Cottrell  
 CDR George S. Council, USN(Ret.)  
 Mr. Gregory A. Cox  
 Mrs. Bonnie H. Crabtree  
 Ms. Beth Craig  
 Mr. and Mrs. John A. Crain  
 Mrs. Duke B. Crane  
 Mr. Russell C. Crowell  
 Mrs. Ruth R. Crumley  
 Mr. and Mrs. Robert B. Crutchfield

Mr. and Mrs. James O. Farmer, Jr.  
 Mr. Louis Feraca  
 Mr. and Mrs. Robert W. Ferris  
 Mr. William C. Fields  
 Ms. Susan Fillingham  
 Mr. and Mrs. Herbert Fleishman  
 Dr. Malcolm Fleishman  
 Dr. Stephen B. Fleishman  
 Mr. and Mrs. Michael A. Fradel  
 The Reverend and Mrs. R. C. Frazier  
 Dr. and Mrs. William F. Freccia  
 Ms. Shannon L. Gabriel  
 Mrs. Marcia Gallina  
 Dr. and Mrs. E. C. Garber, Jr.  
 Mrs. Dorothy H. Gardner  
 Dr. and Mrs. F. S. Gardner, Jr.  
 Dr. Sid Gautam  
 Mr. Robert S. Gibson  
 Mr. and Mrs. James W. Gillespie, Jr.  
 Mr. John M. Gillis  
 Mr. and Mrs. A. P. Gnann, Jr.  
 Mr. and Mrs. Richard B. Gochnauer  
 Mr. and Mrs. Howard E. Godfrey  
 Mr. David B. Goodyear

Ms. Amy Heese  
 Mr. J. Daniel Highsmith, Sr.  
 Mr. Bobby Hill  
 Mr. Richard H. Hobgood  
 Ms. Kim Hocking  
 Hodges Associates, Inc.  
 Mrs. Marianna Hollinshead  
 Mr. and Mrs. M. James Hollis  
 Mr. Harold D. Holmes  
 Mr. John F. Holmes  
 Mrs. Hannah Holt  
 Holt Oil Company  
 Mr. Thomas A. Hood  
 Mrs. Morie Murray Howard  
 Ms. Gladys P. Howell  
 Mr. and Mrs. Stanley Huffman  
 Ms. Mary Hughes  
 Mr. and Mrs. Ellis H. Huguley  
 Dr. and Mrs. Thomas G. Hurdle  
 Mr. Brad Hurley  
 Mr. John W. Hurley  
 Mr. Mark Hurley  
 Mr. and Mrs. Arthur P. Hurr  
 Mr. Henry Hutaff, Sr.



*Construction on the annex to Davis Memorial Library nears completion. The plaza entrance will contain engraved bricks honoring alumni, faculty, and many friends of the college.*

Mrs. Ruth L. Cade  
 Mr. Chris Cammack  
 Mr. Henry C. Campen  
 Ms. Ruby J. Campen  
 Mrs. R. C. Canaday, Jr.  
 Mr. and Mrs. Donald R. Canady  
 Ms. Judy Capps  
 Ms. Victoria Carpenter  
 Mr. Grady L. Carroll  
 Mr. George E. Carter  
 Mrs. Janet Carter  
 Mr. Marty Van Cayton  
 Mr. Robert J. Chaffin  
 Ms. Dorothy M. Chappell  
 Mr. Anthony Chavonne  
 Mr. and Mrs. David M. Childers  
 ClaimCure, Inc.  
 Mr. Cermette J. Clardy, Jr.  
 Mr. and Mrs. A. Wilbur Clark  
 Dr. Franklin S. Clark  
 Ms. Guyla D. Clark  
 Mr. James W. Clark  
 Mrs. Linda M. Clark

Mr. and Mrs. Michael R. Cunningham  
 Mrs. Norma E. Currie  
 Mr. Jay Currin  
 Dr. C. T. Daniel  
 Mrs. Libby S. Daniel  
 Mr. Billy Davidson  
 Mr. and Mrs. James A. Davis  
 SFC Eric Dawson  
 Ms. J. Lois Dawson  
 Mr. Hank Debnam  
 Ms. Gail Dickinson  
 Mr. Keith Dimsdale  
 Mrs. Frances P. Dorsett  
 Dr. Claude P. Dowd  
 Mrs. C. C. Duell  
 Mr. Jeff Dunham  
 Mrs. Kensley Edge  
 Mr. and Mrs. Samuel R. Edwards  
 Mr. John Elliott  
 Dr. and Mrs. Gerald Ellison  
 Mrs. Lorraine M. Elzey  
 Mrs. Victoria Elmore  
 Mr. and Mrs. Monroe E. Evans

Mr. and Mrs. Clyde W. Gordon, Jr.  
 Mr. and Mrs. Dwight L. Greene  
 Mr. and Mrs. W.L. Gregory  
 Dr. Stanley G. Griffin  
 Dr. William F. Grimes  
 Mrs. Susan C. Guy  
 Mr. Phil W. Haigh, Jr.  
 Mr. and Mrs. George M. Hall  
 Dr. and Mrs. James S. Hall  
 Mr. Swayn G. Hamlet  
 Mr. Raymond Hammond  
 Dr. Joe W. Hardison  
 Dr. Lewis B. Hardison  
 Mr. and Mrs. James S. Harper  
 Ms. Diane Harrell  
 Mr. Phillip B. Harris, Jr.  
 Ms. Margaret C. Harris  
 Mrs. Ann C. Hatcher  
 Mrs. Mary Flagg N. Haugh  
 Mrs. Evelyn G. Hauser  
 Mr. and Mrs. William R. Hawley  
 Mrs. Swan D. Haworth  
 Mr. James R. Haygood, Jr.

Mrs. Lois Hutaff  
 Mrs. Patricia D. Hutaff  
 Mr. Mark Ingram  
 Ms. Linda W. Irwin  
 Mr. J. David Jameson  
 Mrs. Debbie B. Jenkins  
 Ms. Eloise L. Jenkins  
 Mrs. Sonya Jenkins  
 Mr. Charles R. Johnson  
 Mr. Gordon E. Johnson  
 Mrs. Jo Beth Johnson  
 Mr. and Mrs. M.G. Johnson, Jr.  
 Dr. and Mrs. Paul S. Johnson  
 Mrs. Thelma Johnson  
 Dr. and Mrs. John R. Jones  
 Dr. J. Wesley Jones  
 Mr. and Mrs. Carl Jordan  
 Mrs. Marjorie M. Jordan  
 Dr. and Mrs. Weldon H. Jordan  
 Dr. William R. Jordan  
 The Reverend and Mrs. F. B. Joyner, Jr.  
 Mr. and Mrs. William Julian  
 Mrs. Carolyn Justice-Hinson



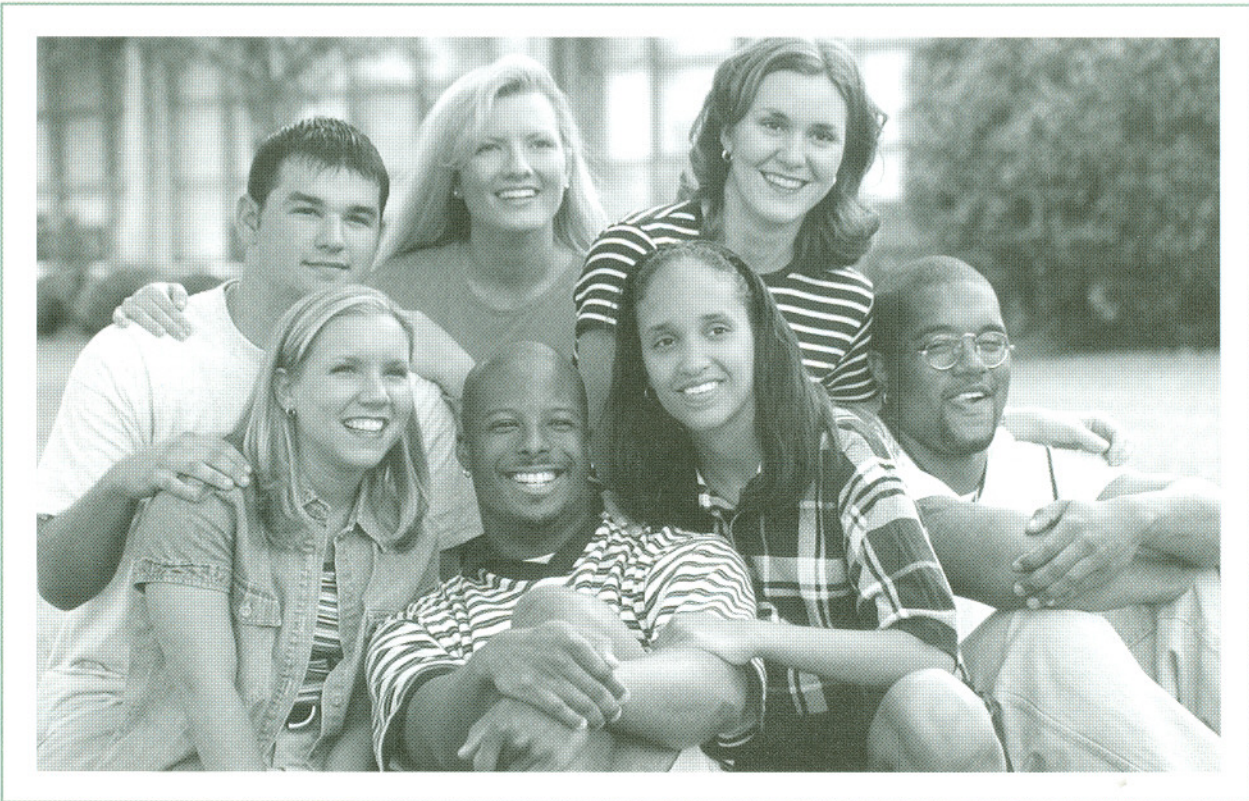


Ms. Doe Ann Crocker Keane  
 Mr. and Mrs. C. O. Kearney, Jr.  
 Mr. and Mrs. Chester E. Keen  
 The Honorable A. Elizabeth Keever  
 Mr. Ray J. Kinder  
 Mr. Greg King  
 Mrs. Marilyn T. Kiser  
 Mr. James M. Kizer, Jr.  
 Mr. and Mrs. James M. Kizer  
 Mrs. Lou Knight  
 Ms. Cathy Lada  
 Mr. David E. Lain  
 Miss Lois J. Lambie  
 Mrs. Amanda G. Lampros  
 Mrs. Carolyn Lancaster  
 Mr. Jamie Lancaster  
 Mr. and Mrs. Henry Lankford  
 Ms. Patsy O. Lasley  
 Mr. J. Paige Ledford  
 Mrs. Neill Legg  
 Col. Alfred Lemire, (Ret.)  
 Dr. Kenneth B. Lewis  
 Ms. Mary F. Lewter

Mr. Jack McGinley  
 The Honorable and Mrs. D. Carmichael McIntyre, II  
 Dr. Mark S. McKinnon  
 Mr. and Mrs. Marcus G. McKnight  
 The Reverend and Mrs. H. M. McLamb  
 Mrs. Leigh Anne McLean  
 The Reverend Dr. Samuel D. McMillan, Jr.  
 Mr. and Mrs. Samuel H. Meares  
 Mr. and Mrs. Donald L. Melvin  
 Ms. Jeanne F. Menefee  
 Dr. Eric W. Miller  
 Mr. and Mrs. Jeffrey Miller  
 Mr. Louis O. Miller, Jr.  
 Ms. Pat Mingle  
 Mr. and Mrs. E. Ray Moore  
 Mrs. Jean Moore  
 Mr. R. Steven Moore  
 Mr. William T. Moore  
 Mr. and Mrs. Frank M. Moorman  
 Mr. Walter C. Moorman  
 Mr. and Mrs. Shannan Morris  
 Ms. Mia Morris  
 Ms. Monique Morton

Dr. Richard W. Pearce  
 Mrs. Betty Jo Pearson  
 Mr. John E. Petree  
 The Reverend and Mrs. Charles R. Pittman  
 Mrs. Dell Marie Pittman  
 Mrs. Jeanne A. Player  
 Mr. Richard L. Player, Jr.  
 Dr. Lorenzo Plyler  
 Dr. Kenneth A. Popio  
 Mrs. Ina Mae B. Powell  
 Mr. and Mrs. Oliff C. Pratt  
 Dr. Julia Prewitt  
 Mr. and Mrs. Don K. Price  
 Mr. Lawrence M. Priest  
 Mr. John R. Prince  
 Mr. and Mrs. Newton V. Prince, Sr.  
 Dr. William L. Pritchard  
 Mr. Bruce R. Pulliam  
 Mr. and Mrs. Anthony E. Rand  
 Mr. Samuel C. Rankin  
 Mrs. Anne C. Raper  
 Mr. Hector N. Ray  
 Mr. Douglas L. Reece

Mr. Benny Shumate  
 Dr. Christian F. Siewers  
 Mr. and Mrs. Alan Skinner  
 Mr. Gary T. Smith  
 Mr. and Mrs. Robert T. Smith, Jr.  
 Smithboro Furniture Company  
 Ms. Mae Belle L. Smyth  
 Mrs. Joyce Sorensen  
 Ms. Ida J. Spada  
 Mr. Charles M. Speegle, Jr.  
 Mr. and Mrs. Samuel F. Stack  
 Dr. and Mrs. Albert Stewart, Jr.  
 Mrs. Marie T. Stewart  
 Mr. Marlin M. Stewart  
 Mr. and Mrs. James S. Stilwell  
 Ms. Yvonne R. Stohlmam  
 Ms. Anne Stone  
 Dr. Frank Stout  
 Mr. and Mrs. Harold J. Sturdivant  
 Miss Mary Lou Suddath  
 Dr. and Mrs. W.B. Sugg  
 Mr. Bobby G. Suggs  
 Mr. Danny Summerlin



Mr. and Mrs. Howard G. Ling  
 Mr. David J. Little  
 Mr. and Mrs. G. Gordon Livingston  
 LTC and Mrs. James L. Louden  
 Dr. and Mrs. Howard Loughlin  
 Mr. C. Keith Love  
 Ms. Shirleen Mack  
 Col. and Mrs. William D. MacMillan, IV  
 Mr. and Mrs. Joe Maloney  
 Mr. Larry Marshall  
 Mr. Richard Martin  
 Dr. Aubrey M. Masilela  
 Mr. George Massengill  
 Mr. George Matthews, III  
 Dr. Harold E. Maxwell  
 Mr. James H. Maynard  
 Mr. Charles K. McAdams  
 Ms. Eva N. McAdams  
 Mr. and Mrs. John E. McAdams  
 Mr. W.S. McClure  
 Mr. James H. McDermott  
 Ms. Patrice McElfresh  
 Dr. and Mrs. Oscar L. McFadyen, Jr.

Mr. and Mrs. Wendell Moseley  
 Dr. and Mrs. Galen C. Moser  
 Mrs. Darlene Nader  
 Mr. Mitchell A. Nance  
 Mr. Tim Newton  
 Ms. Martha H. Nimmo  
 Ms. Anne M. Nimocks  
 Mr. David R. Nimocks, Jr.  
 Mr. Marion J. Noland  
 Mr. and Mrs. Ken C. Norton  
 Mrs. Sarah O'Hanlon  
 Ms. Hattie M. Odom  
 Mr. and Mrs. Thomas Olcott  
 Dr. and Mrs. Clarence S. Olive  
 Mrs. Mary Erwin Olive  
 Mr. and Mrs. J. Harvey Oliver, Jr.  
 Mr. and Mrs. Preston D. Page  
 Dr. and Mrs. Henry E. Parfitt  
 Mr. Roy Parker  
 Mrs. Janet Parks  
 Mrs. Rebecca H. Pattishall  
 Mr. and Mrs. D.L. Paul  
 Mrs. Caren C. Payne

Mr. Riddick Revelle  
 Mrs. Emmi M. Rhodes  
 Mr. Mark W. Rice  
 Mr. and Mrs. Nathan Ritter  
 Dr. and Mrs. Otto F. Rogers  
 Mr. James Rose  
 Mrs. Louise H. Rouse  
 Ms. Carolyn Rueh  
 Mrs. Ester K. Rusmisl  
 Mr. D. P. Russ  
 Mr. and Mrs. Leonard Saebeby  
 Mr. and Mrs. J. Mitch Sandlin  
 Dr. and Mrs. Charles K. Scott  
 Ms. Linda B. Scott  
 Mr. and Mrs. William R. Sharp  
 Dr. and Mrs. Frank S. Shaw  
 Mr. and Mrs. John C. Shaw, Sr.  
 Mr. John G. Shaw  
 Mr. and Mrs. Edwin W. Sheffield  
 Dr. and Mrs. Richard H. Shereff  
 Dr. Claude P. Sherman  
 Mr. Robert H. Short  
 Mr. and Mrs. Robert N. Shuller

Mrs. Lura S. Tally  
 Mrs. Ashley Taylor  
 Mr. and Mrs. Richard P. Taylor  
 Mr. Gerald A. Teele  
 Sir John M. Templeton  
 Col. Cader C. Terrell, USA (Ret.)  
 Ms. Patsy M. Thames  
 Thomas, Judy & Tucker, P.A.  
 Mr. and Mrs. Walton R. Thompson  
 Mr. and Mrs. C. Ray Thorne  
 Mrs. Diane G. Thornton  
 Mr. and Mrs. W. Lyndo Tippet, CPA  
 Mr. and Mrs. Joseph H. Todd  
 Mr. and Mrs. James V. Townsend  
 Townsend Real Estate  
 Mr. and Mrs. R.L. Turnage  
 Mr. Brian Turner  
 Ms. Jo Turpin  
 Mrs. Mary M. Tyler  
 Mr. Chuck Uzzell  
 Mr. and Mrs. C. H. Von Rosenberg  
 Mr. and Mrs. Thomas Walden  
 Ms. Margaret Lee Walker





Mrs. Sue Wampler  
 Dr. James X. Ward  
 Dr. Michael Ward  
 Mr. and Mrs. Robert A. Ward  
 Mrs. Margaret Ward  
 Mrs. Jane Warfel  
 Mr. and Mrs. James R. Warner  
 Mrs. Julia Warner  
 Mr. and Mrs. George F. Warren  
 Ms. Jaylynn Warren  
 Mr. Clinton Weaver  
 Mr. L. Stacy Weaver, Jr.  
 Mr. and Mrs. Robert B. Weavil  
 Mr. John H. Wheeler  
 Mr. and Mrs. Ron White  
 Mr. and Mrs. Robert L. Whittle  
 Mrs. Donna Wiggs  
 Mrs. Louis R. Wilkerson  
 Mrs. Neill Wilkins  
 Ms. Annie Mae Wilkinson  
 Dr. and Mrs. Henry Wilkinson  
 Mr. Augusta Williams  
 Mrs. Deleano Williams  
 Mr. Thomas W. Williams, Jr.  
 Mr. David G. Wilson  
 Mr. and Mrs. Sam M. Wilson  
 Dr. Samuel Womack  
 Mr. and Mrs. C. Fletcher Womble  
 Mr. Walker Y. Worth, III  
 Mrs. Mary Yarborough  
 Mr. and Mrs. Ramon L. Yarborough  
 Ms. Sharon Yates  
 Mr. Farley Youman

Consumers Title Company  
 Copiers Plus, Inc.  
 Crowell Constructors, Inc.  
 Cumberland Community Foundation, Inc.  
 Cumberland Furniture, Inc.  
 Dickinson Buick-Dodge  
 Dixie Pawn Shop-Military Supply  
 Dunn's Nursery & Garden Shop<sup>8</sup>  
 Eastern Turf Equipment, Inc.  
 Econo Lodge 1-95  
 Elliot Construction Company  
 Entre Business Systems Group  
 EUA Cogenex  
 Express Stop Stores  
 Ann's Flower Shop  
 Fayetteville Publishing Company  
 Finch Oil Company  
 First Citizens Bank & Trust Co.  
 First Fayetteville Properties  
 \*First Union Bank  
 First Union Foundation  
 Fleming & Associates  
 GTE Foundation  
 Haigh, Byrd & Lambert  
 Haire Plumbing Company, Inc.  
 \*Hamilton Beach Proctor-Silex  
 Harris Wholesale  
 Hayes Hobby House, Inc.  
 Healy Wholesale Company, Inc.  
 Hecht's  
 Heilig-Meyers Furniture  
 Hercules Steel Company, Inc.  
 Highlander Golf, Inc.  
 Hodges Associates, Inc.  
 \*Hoechst Celanese  
 Holmes Electric, Inc.  
 Holt Oil Company  
 Home Federal Savings & Loan  
 Homemakers Furniture and Interiors  
 Hubbard Pipe & Supply, Inc.  
 Huggmugger's Grill  
 \*Instrument Specialties Co.  
 \*J. C. Penney Company  
 Jack A. Watson, CPA  
 Jacobs Photography  
 \*Jefferson Pilot Corporation  
 \*John Hancock Insurance Company  
 \*Johnson-Sherman Company  
 Jones Electric, Inc.  
 Kanos Enterprises, Inc.  
 Ken C. Lancaster Real Estate  
 LaFayette Cemetery Park Corp.  
 LaFayette Clinic, P.A.  
 LaFayette Motor Sales, Inc.  
 Lanetech Manufacturing Company  
 Largent Consulting Engineers  
 Lee Hyundai, Inc.  
 Leon Sugar's Men Shop  
 \*Lever Brothers Company  
 Lisa's Picture Framing  
 Little & Pulley Office Machine  
 The LSV Partnership  
 Manpower  
 Massey Hill Drug Company  
 \*MBNA America Bank, N.A.  
 McDonald Lumber Company, Inc.  
 McFadyen Music Company  
 \*Merrill Lynch & Co., Inc.  
 Methodist College Golf Shop  
 \*Metropolitan Life Foundation  
 Mid-South Lighting  
 Mid-South/Trigon Insurance Co.  
 Mid-Way Barber Shop  
 \*Milliken & Company  
 Moorman, Kizer & Reitzel, Inc.  
 N. C. Consortium For International Education  
 N.C. Academy of Physician Assistants  
 \*NationsBank  
 New Rainbow Restaurant  
 North Carolina Natural Gas  
 Odell Smith & Sons Plumbing Co.  
 Osborne Glass Company, Inc.  
 Owen's Florist  
 Pennsylvania Lumbermens Mutual  
 Pharmacia and Upjohn, Inc.  
 Player, Inc.  
 Poole Warehouse, Inc.  
 Powers-Swain Chevrolet, Inc.  
 Prescription Center  
 Purvis Brothers Ford  
 Refrigeration & Heating Co.  
 Rhudy's, Inc.

\*RJR Nabisco, Inc.  
 Rogers & Breece, Inc.  
 The Rose Group  
 \*Russell Corporation  
 S. C. Tolbert, D.D.S., P.A.  
 Schering Sales Corporation  
 SCS Direct Mail Marketing  
 Sears-Roebuck Company  
 Short Stop Food Mart  
 Shuller Ferris Johnson & Lindstrom  
 Smithboro Furniture Company  
 Sodexo Marriott Management, Inc.  
 South Carolina Baptist Convention  
 Southland Rental & Supply Co.  
 Spectacles  
 \*Sprint Foundation  
 \*State Farm Companies Foundations  
 Stein Mart  
 Stewart Oldsmobile Nissan  
 Stylin & Filin, Inc.  
 Systel Office Automation  
 Tew Tile & Carpet Company  
 Thomas M. Goetz, AIA Architect  
 Thompson Company  
 Mr. Lawrence Thornton  
 Tile Inc. of Fayetteville  
 Tire Sales & Service, Inc.  
 Tom J. Keith & Associates  
 Townsend Real Estate  
 Triangle Bank  
 \*Unilever United States Foundation, Inc.  
 Union Corrugating Company  
 United Methodist Foundation  
 Up & Coming  
 V-Point Super Market  
 Valley Motors, Inc.  
 Vanstory-Exum Insurance Agency  
 Vidimos, Inc.  
 \*Wachovia Bank of N.C.  
 Weaver Commercial Properties  
 Weaver Development Company  
 Webb Carpet Company  
 Wellman, Inc.  
 Wiener Works of Cumberland Cty  
 Williams Printing  
 WKML  
 Yarborough Motor Company

Mrs. Kimberly L. Dowd  
 Mr. Ron Foster  
 Dr. Jim Foster  
 Mrs. Wanda Foster  
 Ms. Silvana M. Foti  
 Dr. Sid Gautam  
 Dr. C. Arnal Guzman  
 Dr. Joe W. Hardison  
 Mr. Alton L. Hare  
 Dr. Randall L. Hartman, Esquire  
 Ms. Janet K. Hassenplug  
 Mrs. Jerry Hendricks  
 Dr. M. Elton Hendricks  
 Ms. Kim Hocking  
 Mr. Jerry Hogge  
 Mr. Joseph E. Huggins  
 Mr. John E. Humphreys  
 Mrs. DeeDee M. Jarman  
 Dr. John R. Jones  
 Mrs. Caroline F. Kearns  
 Mrs. Andrea LeNeave  
 Mr. Jesse LeNeave  
 Dr. Jen-Hsiang Lin  
 Dr. Howard Loughlin  
 Mr. Rick Lowe  
 Dr. John M. Marr  
 Mr. Larry Marshall  
 Mrs. Helen Matthews  
 Mr. Robert McEvoy  
 Ms. Maureen M. Molter  
 Dr. Peter Murray  
 Mrs. Diane Owens  
 Dr. Jo Ann Parkerson  
 Reverend Carrie W. Parrish  
 Mrs. Betty Neill Parsons  
 Mr. Boyd D. Parsons  
 Mr. Jim Peoples  
 Dr. Robert Perkins  
 Mrs. Elaine Porter  
 Dr. Michael Potts  
 Mrs. Susan Pulsipher  
 Mr. David M. Rice  
 Mr. Brian R. Rodgers  
 Dr. Otto F. Rogers  
 Mrs. Jennifer Rohrer-Walsh  
 Mrs. Linda J. Schaffer  
 Mrs. Cindy Schalla  
 Dr. Richard H. Shereff  
 Dr. John Sill  
 Mr. Arthur Smith  
 Mr. Michael H. Sullivan  
 Dr. Richard Walsh  
 Dr. James X. Ward  
 Dr. Mary Wheeling  
 Dr. Joyce White  
 Mr. Stephen A. Williams  
 Dr. Paul F. Wilson  
 Ms. Amanda H. Wunder  
 Mrs. Shelia D. Yates-Mattingly  
 Dr. Andrew Ziegler

## BEQUESTS

Estate of B. F. Stone  
 The Reverend Roscoe C. Hauser, Jr.  
 Estate of L. Dean Minges  
 Estate of Frances Sharpe Queen

## CORPORATIONS

\* denotes matching gift company  
 6.0 Sports  
 AAA Glass Company  
 \*Abbott Laboratories Fund  
 Ace Pawn Shop  
 Adecco Employment Services  
 Alabama Supreme Court & State Law Library  
 \*Alcoa Foundation  
 Allman Electric Corporation  
 Allstate Insurance Company  
 American Honda Motor Company, Inc.  
 Antex Exterminating  
 Arran Realty, Inc.  
 Barbecue Hut, Inc.  
 Bearing Service Co. of Pennsylvania  
 Becton Dickinson and Company  
 Belk  
 Bell's Seed Store  
 Biltwell, Inc.  
 \*Black & Decker, Inc.  
 Blashfield Communication  
 Blue Realty  
 Bobby Taylor Oil Co., Inc.  
 Branch Banking & Trust Company  
 Briggs & Sons Tire  
 Broadwell Construction Co.  
 Broadwell Land Company  
 Bryan Pontiac-Cadillac Company  
 Bullard Furniture Company  
 \*Burlington Industries Foundation  
 Butler Electric Supply of Fayetteville  
 Cain and Cain Advertising  
 Cape Fear Amateur Radio Society  
 Cape Fear Feed Products  
 Cargill, Inc.  
 \*Carolina Power & Light  
 Carolina Regional Radiology  
 Cashwell Appliance Parts, Inc.  
 Cavin's Business Solutions  
 Centura Bank  
 \*The Chase Manhattan Corp.  
 Chicago Flame Hardening  
 Chris's Open Hearth Steak  
 \*Cigna Matching Gifts Program  
 Coca-Cola Bottling Company  
 Collier Insurance and Assoc.

## FOUNDATIONS

Cooke Foundation  
 Cumberland Community Foundation  
 The Florence Rogers Charitable Trust  
 J.P. Riddle Charitable Fnd.  
 The Kresge Foundation  
 Robert P. Holding Foundation

## FACULTY/STAFF

Dr. Christopher T. Aul  
 Mrs. Dawn F. Ausborn  
 Dr. Lloyd Bailey  
 Dr. Linda Sue Barnes  
 Ms. Peggy G. Batten  
 Dr. Elizabeth Belford  
 Dr. Gillie Benstead  
 Mr. William H. Billings  
 Dr. Joan Bitterman  
 Mr. Eric Brandon  
 Ms. Summer E. Brock  
 Mrs. Terri S. Brown  
 Dr. Darl H. Champion  
 Dr. Suzan K. Check  
 Mrs. Kathryn Christian  
 Dr. Robert S. Christian  
 Dr. Louis P. Clark  
 Mrs. Lynn Clark  
 Dr. Samuel J. Clark, III  
 Dr. Theresa P. Clark  
 Mr. Gene Clayton  
 Mr. Steve Conley  
 Dr. Robert H. Cooper  
 Ms. Lori B. Cornwell  
 Dr. Anthony J. DeLapa  
 Mrs. Patricia Delapa  
 Mr. John Dixon  
 Mr. Joseph F. Doll, Jr.  
 Mr. John P. Dowd, III

## IN HONOR OF

Gifts were received in 1998 in honor of the following:  
 Charles McAdams  
 Elton Hendricks

## IN MEMORY OF

Gifts were received in 1998 in memory of the following:  
 W. Robert Johnson  
 Mary McKinnon McNeil  
 Verna B. McAdams  
 Robert Stephen Neal  
 Buelah Presnell  
 Terry Sanford  
 Dana Shirley  
 John Strain

## INDEPENDENT COLLEGE FUND

The Following have Contributed to Methodist College through the N.C. Independent College Fund:

A.B. Carter Inc. Fund  
 AC Corp  
 A.E. Finley and Associates, Inc.





Ms. Nancy G. Adams  
 Advance Stores Co., Inc.  
 Alex Hemby Foundation  
 AlliedSignal Foundation, Inc.  
 Allvac  
 Alwinell Foundation  
 American Greetings Corp.  
 Ameristeel  
 Ametek  
 Aon Risk Services  
 Artec Industries, Inc.  
 AT&T Foundation  
 Bank of Granite  
 Barnhill Contracting Co.  
 Bassett Furniture Industries Foundation  
 BB&T  
 B.B. Walker Foundation  
 B.C. Moore & Sons, Inc.  
 Becton Dickinson and Co.  
 Belk Foundation  
 BellSouth  
 Bernhardt Furniture Co.  
 Best Distributing Co.  
 Billings Freight Systems, Inc.  
 Biltmore Farms, Inc.  
 Blumenthal Foundation  
 Bollick Foundation  
 Borden Manufacturing Co. Fund, Inc.  
 Bradytrane  
 Brame Specialty Co., Inc.  
 Bridgestone/Firestone, Inc.  
 Brody Brothers' Foundation  
 Brown & Williamson Tobacco Corp.  
 Broyhill Family Foundation, Inc.  
 Budd Services, Inc.  
 Burlington Industries Foundation  
 Carolina Container Co.  
 Carolina Foods, Inc.  
 Carolina Mills, Inc.  
 Carolina Steel Corp.  
 Central Carolina Bank Foundation, Inc.  
 Centura Banks, Inc.  
 C.F. Sauer Co.  
 Charlotte Pipe & Foundry  
 CJS, Inc.  
 Clancy & Theys Construction  
 Clariant Corp.  
 Coastal Lumber Co.  
 Coca-Cola Bottling Co. Consolidated  
 Collins & Aikman Foundation  
 Component Concepts, Inc.  
 Cone Mills Corp.  
 Cooperative Bank for Savings, Inc.  
 Corn Products  
 Corning Foundation  
 CP&L Foundation  
 CSX Transportation  
 CT Communications  
 Cummins-Atlantic, Inc.  
 Dacotah Foundation, Inc.  
 Delta Air Lines  
 Diamond Trust  
 Dickson Foundation, Inc.  
 Diebold Foundation  
 DIMON International, Inc.  
 The Dispatch  
 Dixie Yarns Foundation, Inc.  
 Dover Foundation, Inc.  
 Duff-Norton Co.  
 Duke Energy Co. Foundation  
 Durham Coca-Cola Bottling  
 Electric Supply Co.  
 E.N. Beard Hardwood Lumber, Inc.  
 Export Leaf Tobacco Co.  
 Fayetteville Publishing Company  
 Felix Harvey Foundation  
 Mrs. Annabelle Lundy Fetterman  
 First Gaston Foundation, Inc.  
 First Savings Bancorp  
 First Union Foundation  
 Fletcher Industries, Inc.  
 FMC Corp. - Lithium Division  
 Food Lion  
 Forbes  
 Ford Motor Company  
 Freudenberg Spunweb Co.  
 Mr. and Mrs. Charles W. Gaddy  
 Galey & Lord, Inc.  
 Garris Evans Lumber Co.  
 George Foundation  
 Glen Raven Mills, Inc.  
 Glenn Family Foundation

Goodmark Foods, Inc.  
 Goodyear Tire & Rubber Co.  
 Grady-White Boats, Inc.  
 Greensboro News & Record  
 GTE  
 Guardian Corp.  
 Halstead Industries, Inc.  
 Hampton Industries, Inc.  
 Heilig-Meyers Co.  
 Henry E. Wurst Family Foundation  
 High Point Bank & Trust Co.  
 Hill, Maddison & Boyce, L.L.P.  
 Hoechst Celanese - Wilmington  
 Holt Hosiery Mills, Inc.  
 Hooker Furniture Corp.  
 Hornwood, Inc.  
 Hudson Belk Co.  
 Mr. John W. Hunt  
 Ina McNair Avinger Foundation, Inc.  
 Ingersoll-Rand Co.

Nash Brick Co.  
 National Starch and Chemical Foundation, Inc.  
 National Welders  
 National Wholesale Co., Inc.  
 NationsBank  
 N.B. Handy Co.  
 Noland Co. Foundation  
 Norfolk Southern Foundation  
 North Carolina Foam Industries  
 North Carolina Natural Gas Corp.  
 North Carolina Power  
 North State Telephone Co.  
 Novartis Corp.  
 Nucor Corp.  
 Oakwood Homes Corp.  
 Occidental Petroleum Corp.  
 Parkdale Mills, Inc.  
 PCS Phosphate  
 Philip L. Van Every Foundation  
 Philip Morris, Inc.

Mr. Robert E. Stroupe  
 Tanner Foundation, Inc.  
 Taylor Brothers Division of Conwood Co.  
 Taylor Oil Co.  
 Mr. John A. Taylor  
 Thomas Foundation  
 Mr. and Mrs. James E. Thomas  
 Thomasville Furniture Industries Foundation  
 Timken Co.  
 Triad Guaranty Insurance Corp.  
 Unilever HPC USA  
 United Dominion Industries  
 United Guaranty Corp.  
 Universal Leaf Tobacco Co., Inc.  
 UPS Foundation, Inc.  
 Vulcan Materials Co.  
 Wachovia  
 Wade Manufacturing Co.  
 Watts Regulator (Regtrol Division)  
 Wheat First Union  
 Dr. A. Hope Williams  
 Winn-Dixie, Raleigh Inc.  
 W.R. Bonsal Co.  
 Woodbury & Co.  
 Wren Foundation, Inc.  
 Wyatt-Quarles Seed Co.  
 xpedx



*Methodist cheerleaders perform their routine at the National Cheerleaders Association Championship in Orlando, Florida.*

Ingold Co., Inc.  
 Insteel Industries, Inc.  
 Integon Foundation, Inc.  
 Interstate/Johnson Lane  
 Investors Management Corp.  
 J.A. Jones Construction  
 Jac, Inc.  
 Jefferson-Pilot Communications  
 Jefferson-Pilot Corp.  
 J.J. Haines Foundation, Inc.  
 Johnson & Johnson Family of Companies  
 Joseph Dave Foundation  
 J.W. Burrell, Inc.  
 Ketter Foundation, Inc.  
 Kingsdown, Inc.  
 KMPG Peat Marwick, L.L.P.  
 Krispy Kreme Doughnut Corp.  
 Kulynych Family Foundation I, Inc.  
 Lance Foundation  
 Leath, McCarthy & Maynard, Inc.  
 Lederle-Praxis Biologicals  
 Mr. & Mrs. R.T. LeGrand, Jr.  
 Lenoir Mirror Co.  
 Lexington State Bank  
 Liberty Mutual Group  
 Longley Supply Co.  
 Loxscreen Co., Inc.  
 Marsh Furniture Co.  
 Martin Marietta Materials  
 Matthews-Belk Group  
 Mayo Knitting Mill, Inc.  
 Metromont Materials Corp.  
 Milliken Foundation  
 Monumental Agency Group  
 Morgan Co. Foundation, Inc.  
 Mount Olive Pickle Co., Inc.  
 NACCO Materials Handling Group, Inc.

Piedmont Federal Savings & Loan Assn.  
 Piedmont Natural Gas Co., Inc.  
 Plantation Pipe Line Co.  
 Pleasants Hardware Co. Fund  
 Porter Brothers Foundation  
 Public Service Co. of NC, Inc.  
 R.A. Bryan Foundation, Inc.  
 Mr. & Mrs. William Trent Ragland, Jr.  
 Mr. Brooks Raiford  
 Reeves Foundation  
 Renfro Corp.  
 Ridgeview Foundation, Inc.  
 RMIC Corp.  
 Rocky Mount Cord Co., Inc.  
 Mr. E.T. Rollins, Jr.  
 Romac Financial Services, Inc.  
 Schindler Elevator Corp.  
 Seager Waterproofing, Inc.  
 Serta Mattress Co.  
 Shadowline, Inc.  
 Shelton Foundation  
 Shuford Mills, Inc.  
 Shurtape Technologies, Inc.  
 Slane Hosiery Mills, Inc.  
 Snyder Paper Corp.  
 Southco Distributing Co.  
 Southern States Coop., Inc.  
 SouthTrust Bank of North Carolina  
 Sphinx Pharmaceuticals  
 Spray Cotton Mills  
 Sprint  
 Stanback Co.  
 Standard Commercial Tobacco Co., Inc.  
 Stateville Brick Co.  
 Steelfab, Inc.  
 Stephenson Millwork Co., Inc.  
 Stonecutter Foundation, Inc.

## BOOSTER CLUB

Mrs. Jean M. Aswad  
 Ms. Frances R. Barnes  
 Bearing Service Co. of Pennsylvania  
 Dr. Elizabeth Belford  
 Mr. John W. Brown  
 Ms. Joy A. Bonhurst  
 Chicago Flame Hardening  
 Dr. Franklin S. Clark  
 Mrs. Linda M. Clark  
 Dr. and Mrs. Samuel J. Clark, III  
 Mrs. Pat Clayton  
 LTC and Mrs. J.A. Conley  
 Mr. Steve Conley  
 Copiers Plus, Inc.  
 Mr. Brian D. Cuppett  
 Ms. Janis H. Devalles  
 Mr. Joseph F. Doll, Jr.  
 Mr. and Mrs. Jay Dowd  
 Mrs. Catherine L. Flores  
 Mr. Danny R. Fowler  
 Mr. Trent A. Gregory  
 Dr. Lewis B. Hardison  
 Mr. and Mrs. Robert Harrington  
 Dr. Randall L. Hartman, Esquire  
 Mr. Jerry Hogge  
 Mr. and Mrs. Wallace Holmes  
 Mr. John F. Holmes  
 Mr. and Mrs. Timothy Holtsclaw  
 Kanos Enterprises, Inc.  
 Dr. William R. Jordan  
 LaFayette Clinic, P.A.  
 Mr. Rick Lowe  
 Mr. and Mrs. Robert McEvoy  
 Ms. Kimberly A. Miller  
 Mr. David R. Nimocks, Jr.  
 Mr. and Mrs. Charles M. Ollinger  
 Mr. Larry S. Philpott  
 Mr. Robert J. Pilewski  
 Mr. Richard L. Player, Jr.  
 Mr. and Mrs. Benjamin D. Robinson, III  
 LTC and Mrs. Walter M. Swing  
 Mrs. Jenny Turnage  
 Up & Coming Magazine  
 Vidimos, Inc.  
 Dr. Richard Walsh  
 Mrs. Margaret Mary Wertz  
 Mr. Herman P. Williams  
 Mr. Doug E. Wolfgang, Jr.  
 Mr. Farley Youman  
 Dr. Andrew Ziegler







WHETHER you think you can't or think you can, you're right.  
— HENRY FORD

# ALUMNI ASSOCIATION

**A**nother busy year has come and gone for the Methodist College Alumni Association Board of Directors. In order to become more informed about the workings of the College and to better respond to your questions, the Board invited representatives from Financial Aid, Student Life, Business Affairs and Admissions to address the group. Not only were their presentations informative, but as Board members posed questions, our understanding grew. All in all, this is definitely a positive experience and one we plan to continue.

Attendance at the May 1998 Raleigh/Triangle Area Alumni Pig Pickin' doubled the previous year. This shows us the interest is growing for more events in more locations. Dates for this year's events will be announced soon.

The MC Affinity Card Program is a growing asset to the Alumni Association. We encourage you to participate in this extra way to support our alma mater. We are planning to explore additional services to make available to you in the coming year.

The 20 x 2000 initiative is an effort to reach and sustain 20% alumni support by the year 2000. This year, we have moved a little closer to that goal reaching 17%. We can reach 20% if everyone participates to the best of their ability. Just keep in mind that your support helps with everything from scholarships to electricity.

A new organization on campus is working to make active alumni of current students. The Student Alumni Association, which began last fall, is already making an impact. Impromptu Spirit Stick contests, surprise appearances by Monroe the Monarch and other activities are getting students involved all over campus.



*Alumni Association President Lynn Carraway, right, talks with guests at a reception at Dr. Hendricks' home.*

Homecoming '98 certainly had the "Golden Touch" and was a great success. Mark your calendars now for October 29-30, 1999. While class reunions will be in full swing for those graduation years ending in '4' and '9', everyone is welcome. Don't miss this chance to see who's "Still Crazy After All These Years"!



*Monroe II has become an important fixture around campus!*





# METHODIST COLLEGE ALUMNI SURVEY

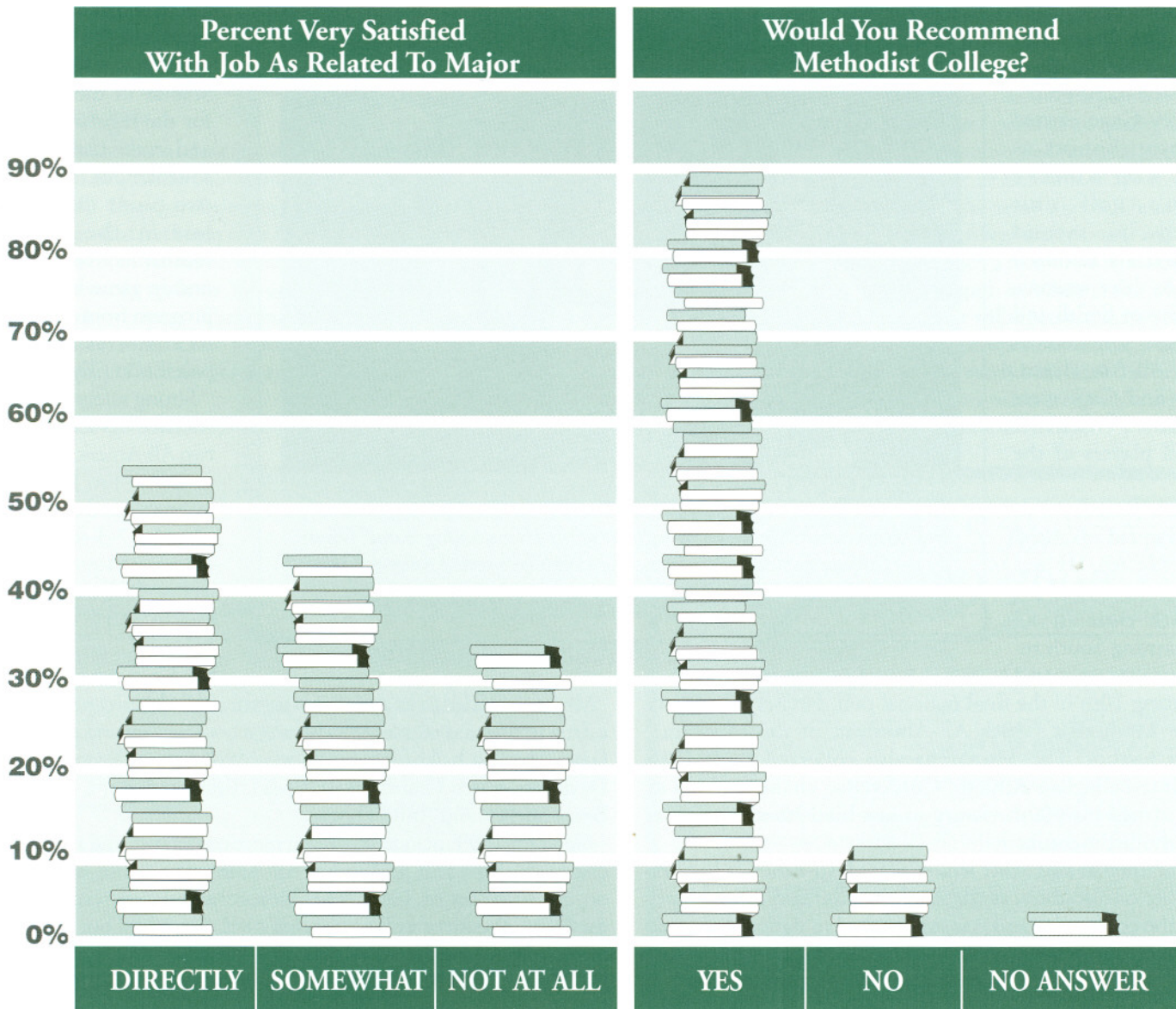
A survey of alumni who attended Methodist College between 1987 and 1996 was conducted during the Fall of 1997 and found a high percentage of recent alumni satisfied with their Methodist College experience. As shown in the graph below, almost 90% of the respondents would recommend Methodist to others. The small classes and personal attention available at Methodist were both high on the list of reasons for recommending the College. The survey also indicated a high satisfaction with the level of instruction they received and their choice of majors.

Over 30 different categories were listed for their majors. The most frequent major was Business Administration with 22%,

followed by Education (11%), Sociology and Accounting. A sizable 71% said they either intended to continue their education or had continued. Of that percentage, 35% were currently enrolled and 12% had already completed a graduate degree.

According to the survey, many of these recent alumni have found jobs related to their majors. But, whether a person was in a job directly related to his or her major had little effect on their satisfaction with their job, compared to 43% of those in jobs somewhat related and 31% of those very satisfied with jobs not related to their major.

With a response rate of 27%, the return was substantially higher than earlier alumni surveys at Methodist College.





# ATHLETICS

FALL seven times, stand up eight.  
— JAPANESE PROVERB

**I**n 1998, the Monarch athletic program was again represented by many successful ambassadors worthy of the Methodist College tradition in the sports world. Chad Collins, Brett Carman and Brion McLaughlin swept the top three places, earning All-America status, as coach Steve Conley's men's golf team

ran away with its eighth NCAA-III national championship in nine years. The Monarchs also captured their ninth DIAC title in 10 years.

Tracey Gage earned runner-up honors as Coach Kim Kincer's women's golf unit claimed its second NCAA-II/III national crown in three seasons. Gage, Stacey Smith and Tanice Ni-lson were all named All-Americans. Collins and Gage were both named NCAA-III national players of the year.

Coach Tom Austin's baseball squad advanced to the NCAA-III national tournament for the 15th time in 17 years, earning South regional runner-up status and placing 10th in the final national poll. Pitcher T.R. Plank became Methodist's 30th All-American in the program's 30-year history. The Monarchs also collected their 12th Dixie Intercollegiate Athletic Conference championship as Austin earned his 600th victory in just his 19th campaign as the Methodist mentor.

Nick Saltmarsh and Scott Jenkin netted All-America honors, at number one doubles, as the men's tennis team finished second in the conference and was represented in national play for the second time in three years. Meanwhile, the women's squad claimed the league title for the second consecutive season.

Jody McIntyre represented the women's track and field program at the national meet in the javelin, earning All-America

honors. Pole vaulter Bradley Hicks represented the men's track and field team in national competition after finishing the regular season ranked number one in the country.

In the fall, Coach Jennifer Jacobsen's cross country squad added to her track program's spring successes by running to second place in the DIAC for the fourth straight year.

Coach DeeDee Jarman's women's basketball squad, operating with no seniors, finished second in the DIAC for the regular season and in the conference tournament. Only a two-point overtime loss in the DIAC tournament's championship game kept the program from earning its first-ever trip to postseason play.

Strong safety Trayfer Monroe was selected to two All-America teams as Coach Jim Sypult's seventh football unit posted a 7-3 slate, the 10-year-old program's second-best ever. MC took second in the new Atlantic Central Football Conference.



*Keljin Adams, '97 receives The Rudy Award from Bob McEvoy, Methodist College Athletic Director, at halftime of the Homecoming Game. Given by the College Football Chronicle, the award recognized Adams for his unselfish play as a Monarch fullback during the 1996 football season.*

Methodist added to its already-successful administrative programs a drug testing and education program, a booster club and a hall of fame. The first hall of fame inductees were: Gene Clayton, Ann Davidson, Karen Grant, Rob Pilewski, Paul Sanderford, the late Bruce Shelley, and Anne Thorpe.

Goals for 1999 include obtaining more conference and national championships and additional All-Americans while building on the successes of 1998. The Monarchs finished second for the DIAC President's Cup all-sports trophy in 1998, but plan to bring it home for the ninth time in 12 years in 1999. MC tied for 21st of 373 NCAA Division III schools for the 1998 Sears Directors' Cup national all-sports trophy, but is looking for its second top 20 finish in four years this spring.





YOU must do things you think you can not do.  
— ELEANOR ROOSEVELT

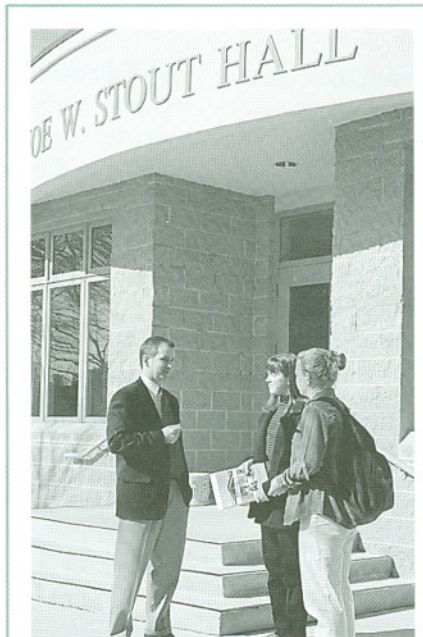
# ENROLLMENT SERVICES

The year 1998 was a banner year for enrollment at Methodist College. Enrollment continued to grow with a record registration of 1,972 students in the day and evening programs for the fall semester. The increased visibility of Methodist has enabled the college to become more popular with prospective students. It's an exciting time at Methodist as we continue to see our message reach a larger audience.

New student enrollment continued to grow, particularly in the areas of freshmen and residential students.

The freshmen student population not only increased in quantity, but it improved in quality as well. The chart below indicates that 102 of our enrolled freshmen were Incentive Scholars. This is an academic scholarship program which rewards students for outstanding academic achievement. These incentive scholars represented 26% of our freshmen class. The average GPA/SAT for these students is 3.57/1102.

The college remains committed to a strong



*Vice President for Enrollment Services Rick Lowe welcomes Amy Jones, a prospective freshman now attending Fayetteville Academy. MC freshman Allyson Slavin was the tour guide.*

financial aid program. In 1998, Methodist awarded over 4.5 million dollars of institutional money to its students. This financial aid program has enabled many students from a wide variety of socioeconomic backgrounds to attend Methodist.

The perception that a private institution is not affordable is a significant obstacle for many private colleges and universities. Methodist College recognizes these concerns and is proactive in the financial aid process. The college offers numerous institutional grants and scholarships that are targeted at quality students who have demonstrated financial need.

The Office of Enrollment Services would like to thank the many alumni, United Methodist friends, college faculty, staff, and coaches who played such a major role in making 1998 a year of record enrollment for Methodist College. Your willingness to share your "MC Story" with prospective students and their families is extremely beneficial. Let's continue to work together to ensure a bright enrollment future at Methodist College.

## Enrollment Trends

	1996	1997	1998
Freshmen Applications	1137	1296	1404
Freshmen Residential Enrollment	276	303	352
Freshmen Incentive Scholars Enrolled	57	74	102
Total Freshmen Enrollment	333	375	394

The college continues to recruit successfully both in state and out-of-state. A demographic snapshot of our 1998 Freshmen class is as follows:

- 49% NC Residents
- 31% Cumberland County Residents

### Additional Top States

Florida  
New York  
Pennsylvania  
Virginia  
Ohio  
Maryland  
New Jersey

### Additional Top Counties

Mecklenburg  
Wake  
Alamance  
Guilford  
Robeson  
Harnett  
Hoke

## GOALS for 1999-2000

- Improve yield rates at all stages of the recruitment funnel
- Increase SAT/ACT average of new students by a minimum of 10 points
- Develop and expand recruitment territories with particular emphasis on the Northeast
- Generate 2,000 applications
- Continue to improve and develop the direct mail program





# CHURCH RELATIONS

THE best and most beautiful things in the world can not be seen or even touched. They must be felt from the heart.  
— HELEN KELLER

**T**he Church Relations Office has established three goals. Each goal stands alone and yet all three are integrated. The goals are:

*To enhance the visibility of Methodist College within the North Carolina Annual Conference.*

During 1998, eight of the twelve District Superintendents invited me to make presentations at a pastors' meetings. Three-fourths of the ministers in the NC Annual Conference were visited either through small groups or individually. Each visit afforded the college an opportunity to offer services. These meetings are excellent opportunities for college staff to personally interact with the ministers.

Approximately 125 individual visits were made. The President preached eleven times; choral groups provided nineteen performances; and several dramatizations were given. Both choral and drama groups performed on campus as well as at various functions. There were two meetings each of Clergy and Laity Friends with a total of 140 persons in attendance.

*To identify possible supporters and friends of the college from persons known to the ministers who have been blessed with the resources that could enhance the mission of Methodist College.*

Ministers are requested to share the names of lay persons who might be interested in becoming involved in college activities. These names are given to the Institutional Advancement Office. Eight couples were invited to join the Laity Friends Association. Six of those accepted the invitation and three attended the fall meeting. Four of last year's members opted to retain their membership. The Institutional Advancement Office keeps accurate records of all persons recommended and attempts to place those who agree to serve on an appropriate committee. Approximately 57 of those recom-

mended have become part of the data base. Eleven communications were sent to the Clergy and Laity Friends during 1998. Five very active lay persons contributed three days of volunteer services last summer to paint rooms in Garber Hall.

*To increase the number of Methodist youth attending Methodist College.*

During the fall of 1998, eighty new students who indicated their religious preference as United Methodist were enrolled. Seventy-three ministers awarded Pastor's Certificates to senior graduates for \$1000 each. The Campus Minister's Office enters all incoming Methodist Freshmen in a computer base in order to encourage them to attend chapel, Bible studies, and other religious activities. Within the past fall and early spring semesters, six new students have expressed an interest in pre-ministerial education. One new religion major was referred by a trustee in October and enrolled at the January 1999 semester.



*Bishop Marion Edwards addresses members of the N.C. Annual Conference of the United Methodist Church in Reeves Auditorium.*

After ACS (Annual Conference Session) for youth in July,

a personal letter, which included literature about the college, was sent to all participants who range from freshmen to senior status in high school. A total of 385 letters were written to the delegates from across the conference. More than 75 adult volunteers were approached in writing and asked to encourage their youth to consider Methodist College for their higher education experience.

The Church Relations Office has been very active in the development and operation of the North Carolina Annual Conference meeting in June for years. Hours have been given unselfishly to assist the Conference Planning Committee in making arrangements, in delivering services, and in executing the functions of the conference. The Church Relations Office has effectively met its goals.





# STRATEGIC PLAN FOR 2000-2005

ONE'S mind stretched by a new idea,  
never regains its original dimensions.  
— OLIVER WENDELL HOLMES

Last year, President Hendricks appointed a Strategic Concepts Committee to develop a new five-year plan for Methodist College.

In October, a draft was presented to faculty and staff for comment and suggestions. The Board of Trustees discussed the plan at two special meetings in November and January and approved "A Strategic Plan for 2000-2005" Feb. 18, 1999.

*Part I, An Executive Summary*, describes the most probable environment in which the college will operate over the next five years, then lists some strengths, weaknesses, and challenges that will need to be addressed in the future.

This section notes that the college-age population in the U. S. and North Carolina will increase, that many high school graduates will not be adequately prepared for college, that continued improvements in technology (e.g. distant learning) may prove costly, and that the issues of a name change and graduate programs need to be discussed.

Four strengths are listed: the college's concern with the moral and spiritual development of students, established educational programs that blend liberal arts and professional preparation, an ability to recruit new students, and improved physical facilities.

Five weaknesses are noted: some programs and facilities are not effective when compared to "our new competition," the college is heavily enrollment-dependent, financial aid discounting continues to be high, the college operates with little margin for financial error, and the original campus is aging.

The major conclusion of Part I is this: *To reach the potential of service, reputation, and effectiveness already clearly present, Methodist College must discover new financial resources and insure that its physical facilities and other resources are appropriate for its mission.*

*Part II, Recommendations*, includes five general recommendations followed by twenty-seven specific recommendations: eight in academics, three in student life, twelve in physical facilities, and four in financial resources.

*The general recommendations are:*

- Recruit and retain more academically prepared and financially able students through expanded and improved academic programs, including adequate technology, improved recruiting and retention activities and more appropriate physical facilities.
- Increase enrollment by the year 2005, to be distributed as fol-

lows: Residential, 850 or more; Commuting, 700; Evening, 600.

- Reverse the decline in new commuting student enrollment.
- Study the advisability of changing the name of Methodist College to Methodist University or some other named university.
- Evaluate the advisability and usefulness of developing a residential area for Methodist College faculty immediately south of the Kinwood-by-the-River subdivision on the college's land located between the baseball field and the Cape Fear River.

*In the area of Academics, it is recommended that the college:*

- Increase the SAT scores of entering freshmen by 10 points each year and the high school grade point average by 0.1 point each.
- Increase average faculty salaries at Methodist College to the 60th percentile among small, independent colleges in North Carolina.

- Develop an international component to the educational experience for all graduates.

- Implement a plan to increase the number of students majoring in the humanities and other traditional liberal arts by more effective external and internal recruiting for these programs.

- Study the possibility of offering graduate programs.

- Evaluate the potential of distant learning for Methodist College, and define and integrate appropriate distant learning models into the Methodist College program.

- Encourage each major to define the relationship of the major to the liberal arts and to integrate the liberal arts perspective into each major.

- Evaluate the appropriateness of the curriculum to determine if there are majors or programs that need to be added or deleted.

*In Student Life, it is recommended that the college:*

- Deepen the institutional commitment to ethical and spiritual growth and seek creative and innovative ways to implement this part of the college mission.

- Improve the counseling and support programs available to all Methodist College students to provide academic and personal support for an increasingly diverse population to improve the retention and graduation rates.

- Develop a more effective placement program.

*With regard to Physical Facilities, it is recommended that the college:*

- Build residence halls to accommodate at least 150 additional students.

*To reach the potential of service, reputation, and effectiveness already clearly present, Methodist College must discover new financial resources and insure that its physical facilities and other resources are appropriate for its mission.*







## *Announcements*

- *The second annual M C Athletic Hall of Fame Golf Tournament is now scheduled for June 18 at King's Grant Golf & Country Club. For more information, contact Tim Holtsclaw at (910) 488-2600.*
- *Summer semester class schedules (for the four day terms and one evening/weekend term) and a summer sports camp schedule are posted on the Methodist College Web site.*

*This report was prepared by the  
Office of Institutional Advancement.  
THANK YOU to all who helped  
make 1998 a banner year  
for Methodist College!*



*The Institutional Advancement staff, l. to r., Summer Brock, Josh Averette, Cynthia Curtis, Janet Hassenplug, Jay Dowd, Caroline Kearns, Monica Rigaud, Danielle Crawford, Bill Billings*