

METHODIST COLLEGE

38
VOLUME XXXIX NO. 1

MARCH 1997

Today



“AS VALUABLE AS A MERCEDES”

by Alice B. Hayes, President
The University of San Diego

The following article appeared in the January/February 1997 issue of *Trusteeship* magazine, published by The Association of Governing Boards of Universities and Colleges. Reprinted with permission.

A recent article in *The New York Times* reported the efforts of the state of Alabama to attract a Mercedes Benz plant into the state. The initiative was successful after the state provided millions of dollars in subsidies and tax breaks, including a commitment to purchase 2,500 Mercedes utility vehicles for \$75 million.

Similarly, New York recently paid more than \$30 million each to Morgan Stanley and Kidder Peabody to keep them from pulling up stakes. California and the city of Anaheim offered to spend \$800 million on roads and other improvements to help Disney expand. The *Times* article reminded me that a community interested in growth works to attract and support companies that contribute to economic development.

As I read the article, I was struck by the similarity of many of the features of the Mercedes plant and those of a private university. The governor was delighted the plant would bring more than 1,000 jobs into western Alabama. Yet most universities provide many more jobs than that, plus additional part-time jobs for students.

The Mercedes plant would attract thousands of related jobs through its purchases of supplies from vendors. A university also spends millions on equipment and services and provides the salaries that support the spending of its employees, who eat, bank, pay mortgages, seek medical care, and do their shopping in the local community. This induced spending generates thousands of additional jobs for the region. What's more since private universities are not supported by the state, these economic benefits are not paid for by the taxpayers.

Like the Mercedes plant, we have a “product.” If you bought a Mercedes, a top-quality new car would cost you about \$60,000. At the end of four years, the car's value would depreciate, and it might need some repairs.

The university's “product”—educated men and women who enrich the labor force and cultural community—will increase in value every year after graduation.

Most of our corporate colleagues have not given much attention to the role of the university as an economic partner. If a university has prepared an “economic

impact statement,” using standard methodologies and multipliers, it can greatly increase public awareness of its economic value. Most studies I have seen show that a university returns two or three dollars to the region for every dollar it receives.

A university's business activities are similar to those of the large corporations in its community, and while these activities are secondary in importance to our educational activities, it is worth noting that we manage our various business functions with great economy.

We are, effectively, in the hotel and restaurant businesses, providing low-cost housing and meals to thousands. We are in the construction and land-development businesses, as we maintain, cultivate, and develop our campuses. Our staffs include accountants and investment managers who manage budgets and invest millions of dollars in endowments. Our public-safety forces are frequently larger than those of neighboring small cities.

We are in the health and fitness business, maintaining recreation centers and athletics programs that benefit our students, faculty, alumni, and community. We have counseling centers to help students and employees who need professional help. We manage health clinics and child care centers.

Our financial-aid office handles a volume of loans and grants that compares with that of a major bank. We sponsor community service programs that provide volunteers for various community agencies. And of course, the point of it all, the university educates thousands of students. That's our real “business.”

When I look at the dollars invested by state development agencies to bring in small businesses or manufacturing plants, I hope leaders realize that they can achieve longer lasting and more provocative results by investing in private higher education. Private higher education is a good investment for the community. It would be of great public benefit if the community were as eager to support its private colleges as it is to attract and support industrial institutions.

The Staff

Bill Billings '68, *Editor*
Summer Brock, *Assistant Editor*
Matt Eviston, *Sports Editor*
Jamee Lynch, *Photographer*
Kim Honan '93, *Typographer*

Alumni Association Officers

Lynn Carraway '71, *President*
David Woodard '71, *1st Vice President*
Tom Maze '93, *2nd Vice President*
Roger Pait '85, *3rd Vice President*
Sharon Weeding '90, *Secretary*
Janet Mullen '72, *Immediate Past President*

Alumni Association Directors

Johnny Lipscomb '68, Paula Adams '78, Julie Madison '82, Nona Fisher '88, Betty Neill Guy Parsons '64, Jerry Monday '71, Lynne Smith '86, Margaret F. Pope '78, Rhonda Etherden '79, David Radford '78, Ruby Strouse '80, Bryan May '92, Michael Stone '93, George Small '85, Larry Philpott '73, Wendy Skinner '89, Camellia Dunn '70, Patricia Cashion '64, Lynley Asay '94, Elaine Marshall '83, Michelle Jahren '96.

Methodist College Today

Methodist College Today (USPS 074-560) is published four times a year (March, June, September, and December) as a service to members of the Methodist College community and Methodist College alumni by the Public Relations Office and the Alumni Office of Methodist College, 5400 Ramsey Street, Fayetteville, NC 28311. Periodicals postage paid at Fayetteville, NC 28302-9651 and other additional entry offices. Postmaster: Send address changes to:

Methodist College Today
5400 Ramsey Street
Fayetteville, NC 28311-1420

Methodist College Today is produced with PageMaker software on a Power Macintosh computer. Circulation: 15,000 copies.

Methodist College does not discriminate on the basis of age, race, sex, national or ethnic origin, religious denomination, or disabilities for otherwise qualified persons in the administration of its admission, educational policies, scholarships, loan programs, athletics, employment, or any other college-sponsored or advertised programs.

Methodist College is related by faith to the North Carolina Annual Conference, Southeastern Jurisdiction, The United Methodist Church. It is an independent corporation rather than an agency of the Conference and is responsible for its own debts and obligations.

METHODIST COLLEGE

Vol. 38, No. 1
March 1997

Today

Newsmakers



PAULINE LONGEST'S
NEW BOOK CAPTURES
NATURAL WONDERS
PAGES 8-9



JOHN TEMPLETON TO
SPEAK AT 20TH STOCK
MARKET SYMPOSIUM
PAGES 5 & 7



THE SMITH TWINS
OF GRAHAM
SCULPT NATURE
PAGE 18

Contents

- 4 Social Work Program Wins Accreditation
 - 7 Cannon Foundation Gives \$50,000 For Library Annex
 - 6 Loyalty Fund Drive / New Trustees
 - 10 Dr. Kimball Addresses Winter Graduates
- ### THE 1996 ANNUAL GIVING REPORT
- 14 Remembering Fannie Farmer
 - 18 Basketball Team Advances To 'Final Eight'
 - 21-22 Alumni News/Class Notes

On the Cover:

MRS. PAULINE LONGEST POSES WITH THE TRAVEL QUILT SHE MADE TO PORTRAY THE PLACES SHE HAS VISITED AND THE MEANS BY WHICH SHE HAS TRAVELED OVER THE YEARS.

—PHOTO BY BILL BILLINGS

SOCIAL WORK PROGRAM RECEIVES CSWE ACCREDITATION

The Council on Social Work Education has granted accreditation to the Methodist College social work program.

Dr. Joyce White, program director and professor of social work, received formal notification from the national accrediting body February 21. Methodist's Bachelor of Social Work program is the 15th in the state to earn CSWE accreditation.

"This is the culmination of five years' work," said Dr. White. "Accreditation will make our Bachelor of Social Work graduates more marketable and enable many to enter Master of Social Work programs with advanced standing."

Dr. White and Ms. Terri Moore Brown, coordinator of field instruction and associate professor of social work, conducted an extensive self-study to demonstrate compliance with CSWE standards and were visited on four different occasions by CSWE commissioners.

"Our program uses a 'generalist practice model,'" said Dr. White, "which assumes that the BSW will be the first person the client sees. We now have 65 majors in the program. Our next step is to move toward school social worker certification and gerontology certification."

Dr. White led similar CSWE accredi-



Dr. Joyce White and Ms. Terri Brown review one of the curriculum guides produced during their self-study for accreditation.

tation efforts at Campbell University and Delaware State College. Now in her third year at Methodist, she holds a Master of Social Work degree from Virginia Commonwealth University and a Ph.D. from Case Western Reserve University.

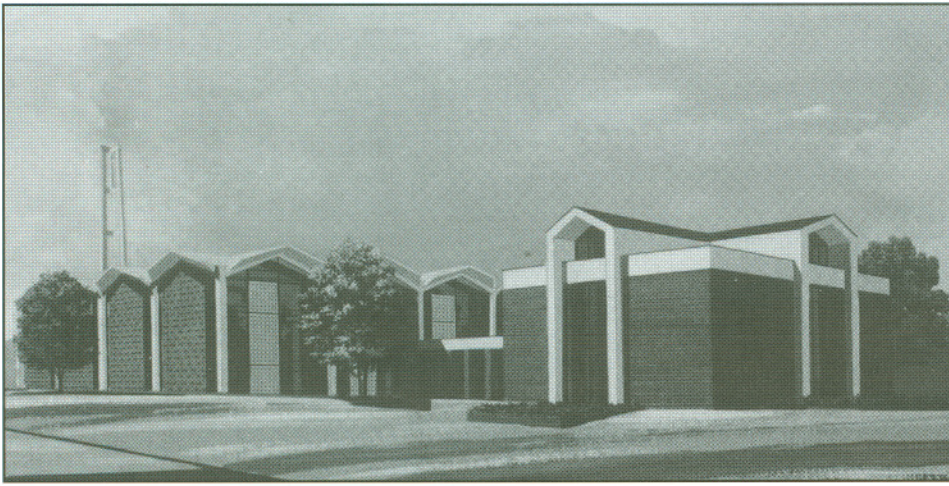
Ms. Brown is a 1985 graduate of Methodist College who holds a Master of Social Work degree from East Carolina University and is working on a doctorate at N. C. State University.

College President Elton Hendricks

described CSWE accreditation as "yet another feather in our cap, a sign that Methodist College is meeting or exceeding national standards in an important field. I commend Dr. White, Ms. Terri Brown, Dr. John Sill, Dr. Anthony DeLapa, and the other faculty and staff members who were involved in this effort. This is the fourth program for which we've received national accreditation since 1992 and we are approaching similar approval for other programs."



The newly completed Stout Hall is now occupied by the Admissions and Financial Aid staffs. An open house and dedication will be held later.



CANNON FOUNDATION AWARDS COLLEGE \$50,000 TOWARD LIBRARY ANNEX

The Cannon Foundation, Inc., based in Concord, North Carolina, has awarded Methodist College a \$50,000 grant toward the construction of an addition to the Davis Memorial Library.

College President Elton Hendricks was notified of the award in a March 4 letter from Dan Gray, executive director of The Cannon Foundation.

Methodist College is seeking \$1.9 million to build the library addition as part of its \$6.5 million "Expanding the Vision" capital campaign. Last September, The Kresge Foundation awarded Methodist a \$300,000 challenge grant toward the project, contingent upon the college raising \$1,458,500—the amount needed to reach a total capital campaign goal of \$6.5 million—by December 1, 1997. With the Cannon grant, the college has now received \$1,420,700 in gifts and pledges toward the library annex.

The recognition and support from The Cannon Foundation is very significant for Methodist College, "said President Hendricks. "It puts us one step closer to meeting the Kresge challenge. We received an identical gift from Cannon in 1989 toward construction of the March F. Riddle Physical Activities Center."

The two-story addition to Davis Memorial Library will be built behind the current structure and will add 13,544 square feet of much-needed space for reference works, study carrels, audiovisual materials, computer work stations, special collections, and staff offices. The library will gain a new entrance, with a

new circulation/reference desk, on the first floor of the annex where it connects to the present structure.

Completed in 1964, Davis Memorial Library contains 17,656 square feet of space and houses over 86,000 volumes, including journals and bound periodicals. As shelving has been added to the main floor to accommodate a growing collection, seating and study space has become limited; a total of 270 patrons can now be seated in the library. Methodist College has a current enrollment of 1,600 students.

Our capital campaign is making tremendous progress," noted Jay Dowd, vice president for institutional advancement. "The Cannon Foundation's grant gives added momentum to our efforts to reach the \$6,550,000 campaign goal. We deeply appreciate this vote of confidence in Methodist College."

The college's current capital campaign has five goals: \$1.9 million for an addition to the library, \$1 million for a new academic building, \$1,650,000 for ongoing support, \$1,000,000 for the endowment, and \$1 million for a math and computer science building. As of March 3, the college has gifts and pledges totalling \$5,790,000, which includes the \$300,000 challenge grant from Kresge.

The math and computer science building is now under construction and is being financed through a bond issue. That project will be finished this summer.

JOHN TEMPLETON TO SPEAK AT 20TH SYMPOSIUM

John M. Templeton, founder and former chairman of Templeton Mutual Funds, will be the guest speaker at Methodist College's 20th annual Stock Market Symposium Thursday, April 17. This year's event will be held at the Charlie Rose Agri-Expo Center; it begins with a banquet at 6:30 p.m.



John Templeton

Often referred to as "the pioneer of global investing,"

Mr. Templeton managed the Templeton Mutual Funds from 1954-1992 and made billions buying overseas stocks. Born in Winchester, Tennessee and educated at Yale and Oxford, he is a man of many "firsts."

He was the first person named to *Wall Street Week's* Hall of Fame, the first person selected by *USA Today* as "Mutual Fund Manager of the Year," and the first recipient of the Professional Excellence Award given by the Association of Investment Management and Research.

"We are excited to have a man of Mr. Templeton's stature as the keynote speaker for our 20th Stock Market Symposium," said Dr. Elton Hendricks, president of Methodist College. "On behalf of the Methodist College Board of Trustees, I will award him an honorary Doctor of Business Administration degree that evening."

Now 84 and retired, John Templeton lives in Nassau, Bahamas. During his Fayetteville appearance he will discuss global investment opportunities for the 90's and beyond. In an interview with *Money* magazine last March, Templeton cited mutual funds invested in Mexico, Portugal, and Eastern Europe as offering the best overseas earnings potential. On the domestic front, he made Fidelity

—PLEASE SEE TEMPLETON PAGE 7
Real Estate Investment Portfolio, one of

COMMUNITY RESPONDS WELL TO '97 LOYALTY DRIVE

The 1997 Community Loyalty Campaign for Methodist College raised \$87,000 between January 1 and February 11, about \$20,000 more than during the same period in 1996.

Joseph H. Todd, a retired certified public accountant, is chairing this year's campaign for the Methodist College Foundation.

At a kickoff breakfast Tuesday, February 11, Men's Basketball Coach Bob McEvoy, whose team was then undefeated, told volunteers, "We may be a small college, but we have a lot of big-time people around here."

College President Elton Hendricks said the College's basic mission remains constant: "to enlighten the mind, ennoble the spirit and serve the community."

Once a year, the Methodist College Foundation asks local citizens to help with ongoing support of the college by contributing to the annual fund. Continuing the "Expanding the Vision" theme of last year, the Foundation set a 1997 goal of \$225,000.

"Methodist College is one of Fayetteville's greatest assets," said Todd

in a preliminary interview, "In fact, it has emerged as one of the leading educational institutions in southeastern North Carolina."

Mr. Todd is a partner in the accounting firm of Todd, Rivenbark, and Puryear. He is a Fayetteville native and a graduate of Duke University. He has been active in professional and civic organizations and currently chairs the board of directors of

the CARE Clinic. He is a director of the United Way Youth Growth Stock Trust, a member of the Fayetteville Kiwanis Club, and a member of Highland Presbyterian Church.

The Methodist College Foundation has raised a total of \$7.8 million in sustaining funds for Methodist since 1957. The Foundation was formed in 1956 to bring a church-related college to Fayetteville.



Breakfast speakers, l. to r., President Hendricks; John Holmes, M.C. Foundation President; Bob McEvoy, men's basketball coach; and Joe Todd, Annual Fund chair.

BOARD OF TRUSTEES APPROVES FOUR NEW MEMBERS

The Methodist College Board of Trustees approved a slate of four new members February 13, as presented by John Wyatt, chair of the Nominating Committee. The new appointments are effective July 1.

The trustees elected Dr. William P. "Bill" Lowdermilk of Pinehurst to serve in the Class of 1998. He retired as vice president of church and community relations at Methodist two years ago, after working at the College for 32 years.

A United Methodist minister, Dr. Lowdermilk is currently assistant in church /community relations at Quail Haven Village in Pinehurst, a retirement home affiliated with the North Carolina Conference of the United Methodist Church. He has endowed a scholarship at Methodist and is a member of the Methodist College Endowment Society.

Mrs. Mary Lynn Bryan of Fayetteville will serve in the Class of 2000.

An active civic leader and current president of the Cumberland Community Foundation, she was historian-in-residence at Methodist in the mid 1980s and edited *The Jane Addams Papers* and the *Margaret Sanger Papers*.

Mrs. Bryan has served as president of both the N. C. Museum of the Cape Fear Advisory Board and the N. C. Museum of the Cape Fear Foundation. She has also been active in Network, a professional women's group.

Mr. Dohn Broadwell of Fayetteville will serve in the Class of 2001. As president of Broadwell Land Company, he has designed and built a number of residential subdivisions in the Fayetteville area.

Broadwell has been active in civic affairs, most recently as a spokesman for the downtown revitalization group known as "A Complete Fayetteville Once and For All Committee." He is currently a member of the Methodist College

Board of Visitors and received the College's Entrepreneur of the Year Award in 1987.

Mrs. March F. Riddle of Fayetteville will serve in the Class of 2001. A member of Haymount United Methodist Church, she was elected by the Board of Institutions of the North Carolina Conference of the United Methodist Church.

In 1990 Methodist College named its new physical activities center for her, in recognition of a major gift by her husband, J. P. Riddle, Jr., who was then a Methodist College trustee. Since Mr. Riddle's death in 1995, March Riddle has played a major role in the management of his real estate and commercial development companies and the March Development Fund.

Robert C. Hatfield, who retired from the board this year, was elected a Trustee Emeritus.



House movers maneuver the old Taylor residence into a clearing behind Cumberland Hall. The house will be renovated to serve as a student lounge/snack bar.

REYNOLDS GRANT TO AID PHYSICIAN ASSISTANT PROGRAM

The Kate B. Reynolds Trust of Winston-Salem has awarded Methodist College a \$59,255 grant for its new physician assistant program.

College President Elton Hendricks said the grant funds will be used to purchase medical teaching resources and to furnish a state-of-the-art electronic classroom in the College's new Allied Health Building scheduled for completion in April.

"The grant from the Kate Reynolds Trust will give us additional resources to train and educate quality health care professionals for southeastern North Carolina," said Ron Foster, director of the physician program. "I am excited that we will have some of the newest

medical education materials on CD-ROM, as well as a video/slide projector, cameras, and monitors for use by our instructors."

The six-semester physician assistant program admitted its first class of four students in May of last year after receiving provisional accreditation in February. The initial class of PA's will graduate in May 1998. A second class of 12 students was recently selected and will start the program in May. Methodist is the third institution of higher learning in North Carolina to offer such a program.

The Kate B. Reynolds Charitable Trust was created in 1947 by the will of Mrs. William N. Reynolds of Winston-Salem.

Three-fourths of the income of the trust is designated for use for health-related programs and services across North Carolina and one-fourth for the poor and needy of Winston-Salem and Forsyth County.

CAMPUS GROWS TO 584 ACRES

During the last two months of 1996, Methodist College acquired two parcels of land which added more than seven acres to the 577-acre campus.

On November 22 the college purchased a strip of land on its northern border from Mr. and Mrs. Daniel Kinlaw and Mr. and Mrs. George Alred Kinlaw. The land is located between the college president's home and the Quick Stop that fronts Ramsey Street.

In December, a friend deeded to the College a commercial building and lot directly across Ramsey Street from Stacy Weaver Drive, the entrance to College Lakes. The building last housed a Dairy Queen, but had been vacant for more than a year.

The College plans to remove the building in order to make way for an entrance into the new College Centre office park. The N. C. Dept. of Transportation has agreed to change the existing three-way stoplight at Stacy Weaver Drive and Ramsey Street to a four-way.

TEMPLETON—CONTINUED FROM PAGE 5

America's largest real estate investment trusts, his top pick.

Dr. Sid Gautam, the director of the Center for Entrepreneurship and the founder of the Stock Market series, predicts a record turnout of between 1,000 and 1,500 persons for this event. Those who attend will receive a commemorative booklet which includes a history of the New York Stock Exchange and highlights from the 19 previous Stock Market symposia.

Methodist College will continue its tradition of presenting three business awards—Outstanding Woman Entrepre-

neur, Small Business Excellence, and Silver Spoon—at the symposium.

Tickets for the 20th annual Stock Market Symposium are \$20 per person. *A special rate of \$10 per person is being offered to area high school students who have participated in the North Carolina Stock Market Game.* Checks should be made payable to Methodist College and sent to the Center for Entrepreneurship, Methodist College, 5400 Ramsey Street, Fayetteville, N.C. 28311. Reservations can be made by phoning 630-7032 or 486-1627.

GOING PLACES BY PAULINE LONGEST:

Going Places, Pauline Longest's long-awaited book about her world travels, will be released the last week in April. It is being published by Pentland Press, Inc.

Methodist's most famous biology and geography prof (1962-79) began writing the book in December 1994 and finished it last summer. Based largely on her journals, *Going Places* spans eight decades (from 1913-1995) and brings every continent to life with interesting anecdotes and the author's own pen and ink drawings. The bulk of the 270-page book is devoted to her 52 trips outside the U. S. between 1971 and 1995.

Since completing her book, Mrs. Longest has taken additional trips to Michigan, Ohio, Canada, Oregon, and Costa Rica. In October she plans to visit Nepal and parts of India. "This trip will include a flight over Mt. Everest," she said, "and I'm looking forward to that."

Mrs. Longest's book is filled with vivid and diverse descriptions: of glowworms on the rock wall behind Cascade Falls in North Carolina, of Lou Gehrig at Yankee Stadium (1934), of a morality play at the church of evangelist Aimee Semple McPherson (L.A., 1936), of a bird called a blue-footed booby nesting in the Galapagos Islands (1972),

and of the world pillow fighting championship in Sonoma, California (1994).

After reviewing records of each year's travels, Mrs. Longest decided to organize the book by continents and other areas, beginning with the United States and proceeding to other parts of North America, then Europe, Australia, Asia, Africa, South America, and Antarctica. The book is divided into two parts: "Early Memories of My Travels", pages 2-36, which includes autobiographical information (her college years at UNC-Greensboro and public school teaching jobs in Richlands and Fayetteville) and "Some Serious Travel", pages 37-247, which covers all her major trips from 1973-95.

Mrs. Longest's most frequent travel companion has been Georgia Mullen, retired Methodist College librarian, with whom she has taken 32 trips of at least one week in length, 28 of them outside the U. S. Next would be her close friend Phebe Emmons of Raleigh, who accompanied her on 12 trips outside the country. Mrs. Emmons is one of a travel group of six teachers and fellow Delta Kappa Gammans, a group known as the



Mrs. Longest reviews galley proofs of her book.

"birthday girls" because they have traditionally gathered to celebrate the birthday of each one. In addition, she has taken ten trips with another companion or as a single with a tour group.

Her favorite destinations in North Carolina include: Lewisville, her hometown outside Winston-Salem, Roaring Gap, and Chapel Hill (she received her master's at UNC in 1947). For several decades she has attended almost every regional and national meeting of Delta Kappa Gamma, in places as diverse as Las Vegas, Memphis, and Kissimmee, Florida. The state convention will be held in Fay-

CAMPUS SCENES



Mrs. Elaine Porter receives a United Methodist Award for Teaching Excellence Feb. 7.



Dr. Elliot Engel of N.C. State University portrayed Charles Dickens at the opening convocation.



Wade Fowler (l.) and Larry Davis (r.) of Pfizer Corp. present a \$1,000 gift to Ron Foster (center) for the P.A. program.

GREAT WAY TO SEE THE WORLD!

etteville the last week in April and the group is scheduled to visit the Pauline Longest Nature Trail at Methodist College.

Mrs. Longest believes the most important thing she has gained from her travels is "a realization of the great variety of cultures and customs in other countries, often including information about educational practices." She said her trip to the Galapagos Islands (1971) was especially meaningful "in that it provided on-site information in subjects which I had touched upon as a biology student."

In selecting her travel destinations, Mrs. Longest first chose famous places she had always wanted to see—the Pyramids, the Taj Mahal, and the Parthenon. But she has become more selective over the years, sifting through travel literature to find something unique. "The Komodo dragon was high on the list of animals I wanted to see in their natural habitat," she said, "and the opportunity finally came."

Now 83, but still young at heart and eager to learn, Pauline Longest hopes readers of her book will be inspired to learn more about other cultures by means of their own travel or by using some of the many educational media



The red pins on this map show the cities visited by Pauline Longest.

available on the Internet and on CD-ROMs. She feels very strongly that world geography should be a required subject in high school and college.

She also has some advice for other travelers: "Before you leave home to visit a country which is new to you, find out what you reasonably can about that country. Then continue to learn during your time there. Never criticize the

customs, the food, or the appearance of the people you are visiting."

The Methodist College Alumni Association will host a reception and book-signing for Mrs. Longest Sunday, May 4 at 3 p.m. in the Alumni Dining Room, Berns Student Center. The author will speak briefly about the experience of writing the book and *Going Places* "the Longest way."



Bob Nichol plays Scottish music to promote MC's study abroad program.



Living the Dream, Inc. presents Our Young Black Men Are Dying and Nobody Seems To Care Feb. 13.

DR. SUE KIMBALL, REV. BILL BRASWELL SPEAK AT 24TH WINTER COMMENCEMENT

Methodist College graduated 120 students at its 24th winter commencement December 13.



Dr. Sue Kimball

Dr. Sue Kimball, retired Methodist College English professor, delivered the commencement address, entitled "Everything You Need To Know You Learned At Methodist

College."

Dr. Kimball offered the graduates seven rules for successful living which she said they should have learned at Methodist College. They are: 1) Be curious, 2) Never go anywhere without a ball point pen, 3) Never go anywhere without a paperback book or magazine, 4) Don't worry about what others think about you, 5) Love yourself, 6) Find a cause and get behind it, and 7) Listen with an open heart and mind to those who love you the most.

In his baccalaureate sermon Friday morning, Rev. Bill Braswell, pastor of Haymount United Methodist Church in

Fayetteville, urged the graduates to be "people of joy in all seasons and circumstances." His sermon topic was based on I Thessalonians 5:16-18.

While conceding that Advent can be a joy-robbing season in some ways, Rev. Braswell said, "Don't let despair defeat you. Find some way to beat the blues. Do something positive for someone else. Joy is the natural emotion for the Christian."



Rev. Bill Braswell

College President Elton Hendricks presented Methodist College Medallions to two retired faculty members—Mrs. Inge Dent, who taught German for 27 years and served 14 years as dean of women; and Dr. Sue Kimball, who taught English for 17 years and directed the College's Southern Writers' Symposium.

President Hendricks also presented the Sam Edwards Award to Mrs. Mary Francis Williams of Roseboro, N. C., denoting her selection as the outstanding Evening College graduate of 1996. Mrs.

Williams graduated "magna cum laude" in May, with a B.S. degree in business administration.

Twenty-six members of the winter class graduated with honors—nineteen "cum laude," five "magna cum laude," and two "summa cum laude."

DEGREES WERE AWARDED TO THE FOLLOWING:

BACHELOR OF ARTS Cape Fear Region

Fayetteville: Itza C. Baker, Spanish, *cum laude*; Tammy Sue Braxton, sociology; Antje C. Crawford, Spanish; Laura Cristin Dell, business administration and mass communication; Connie Eileen Holloway, English; Gladys Evaristo de Karp, Spanish; Frances Vincent Rivadulla, mass communication; Benito Rodriguez, Spanish; Quincy Allen Tarrance, history; Heather Gertrude Yvette Tomerlin, political science.

Fort Bragg: Eusebius P. Cadet, business administration, *cum laude*; Reuben Rogue Maes, Spanish; Amanda Wales Post, political science, *magna cum laude*.

Other Areas of the State

Cary: Bryan William Steinhagen, writing;
Graham: Kimberly Dawn Smith, art with a



Graduates applaud after turning their tassels.



Dr. Sue Kimball receives a Methodist College Medallion.

A Profile of the Class of '96

NUMBER OF GRADS

May	177
December	120
Total	297

MAJORS

Accounting-8
Art-4
Biology-13

Business Administration-33
Bus. Adm./HCA-9
Bus. Adm./PGM-45
Bus. Adm./PTM-2
Chemistry-0
Communications-5
Computer Science-3
Criminal Justice-14
Elementary Education-16
English-8

Fine Arts Management (Music)-0
French-0
History-10
International Studies-1
Liberal Arts-1
Math-3
Music-4
Physical Education-9
(Athletic Training)-5

(Sports Management)-7
Political Science-11
Psychology-4
Religion-0
Secondary Education-3
Social Work-7
Sociology-30
Spanish-5
Special Education-7
Writing-3

concentration in ceramic sculpture, *cum laude*; Kristy Dawn Smith, art with a concentration in ceramic sculpture, *cum laude*.

Other States

Stacy Irene Harper, education studies, Bayshore, N.Y.; Jennifer Beth McCreary, writing, Centreville, MD; Allison Laine Hirschinger, English, *magna cum laude*, Jonesboro, GA.

Other Countries

Reykjavik, Iceland: Larus Isfeld, international studies, *cum laude*.

BACHELOR OF SCIENCE

Cape Fear Region

Fayetteville: Christopher Alan Baker, business administration; Kenneth Ronald Benik, history; Mae E. Blivens, sociology; Julie A. Borja, elementary education, *cum laude*; Tina L. Boyles, biology, *magna cum laude*; Patricia Ann Butler, criminal justice; Robin C. Christine, accounting; Cecilia Jo Copeland, sociology; Alexander V. Curameng, political science; Jennifer Leigh

Dunn, business administration; Kimberly Lowe Frazee, elementary education, *cum laude*; Norma Jean Hunter, special education; Rachel Ann Juren, criminal justice; Kristin M. Klarenbeek, psychology; Victoria Lynn Veney McGhee, biology; Michelle Lynn McKinney, elementary education; Deborah Lynn Nelson, history, *cum laude*; Tracy Lynn Ossont, physical education with a concentration in sports management; Anthony V. Palombizio II, criminal justice; Michael Carlton Platt, business administration with a concentration in professional golf management; Ginger Ann Preiss, criminal justice; Sharon McNeil President, business administration, *cum laude*; Carl Anthony Reid, sociology; Gary B. Ross, criminal justice; Donnie Lee Sanders, sociology; Deborah Lynn Schweitzer, business administration with a concentration in health care administration; Kevin Paul Schmuckal, business administration; James W. Smith, elementary education; Debbie White Starling, sociology; Melissa Scott Sykes, elementary education, *cum laude*; Mary W. Tillman, business administration; Mary Allyson Wherren,

biology; Brian Scott Wilson, business administration; Denise Martin Wyche, business administration; Teresa Dawn Young, biology, *cum laude*.

Fort Bragg: Joseph Franklin Garst, political science; Kirsten E. Pickles, elementary education.

Pope Air Force Base: Dee McDaniel Stiles, middle grades education.

Cameron: Suzanne Marie Sullivan-Davis, special education.

Erwin: Lisa Horne Lynn, *cum laude*.

Godwin: Marcilla K. Colvin, business administration.

Hope Mills: Scott A. Pelletier, business administration; Mark Corey Weber, biology; Benny Lee Wyrick, history, *cum laude*.

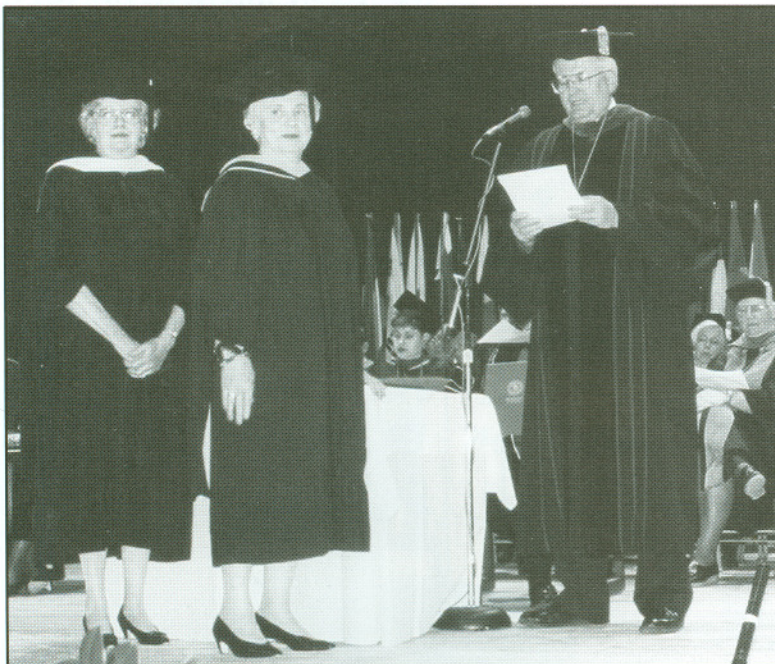
Lillington: Alberta G. Sola, biology.

Linden: Deanna McLamb Lyon, elementary education; Cherisse Connors Shepard, criminal justice and sociology; Melissa Kathleen Troeger, criminal justice.

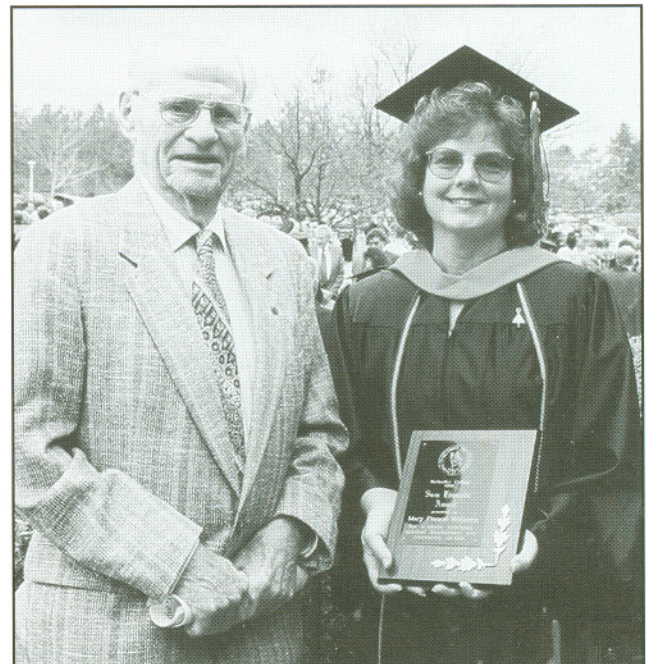
Parkton: Wendy Sue Bridgeman, psychology.

Sanford: Melissa Gayle Allen, elementary education, *cum laude*.

—PLEASE SEE GRADUATES PAGE 12



Dr. Hendricks reads citation awarded to Mrs. Inge Dent with her Methodist College Medallion.



Sam Edwards poses with Mary Francis Williams, the Outstanding Evening College graduate of 1996.

DECEMBER CLASS BRINGS MC GRADUATE TOTAL TO 6,291

—CONTINUED FROM PAGE 11

Southern Pines: Charles Headlee, physical education with a concentration in sports management.

Spring Lake: Tracy Jo Collins, elementary education, *cum laude*.

Stedman: Joanne Margaret Masker, elementary education.

Wade: Anita Ragina Tart, business administration, *cum laude*.

Other Areas of North Carolina

Concord: Darlene Marie Dykas, middle grades education; Goldsboro: Raiford Ashley Gainey, business administration; Knightdale: Allan Baldwin Jennings, business administration; Raleigh: Jodie Owen Bullard, mass communications.

Other States

Brien William Brenfleck, business administration, Casa Grande, AZ; Stacie Lee Butler, business administration with a concentration in professional golf management, Youngstown, OH; Carter N. Catlett III, criminal justice, Poquoson, VA; Brian Christopher Clary, business administration with a concentration in professional tennis management, Elwood, IN; David Matthew Connolly, business management with a concentration in professional golf management, *magna cum laude*, Easton, MD; Monica Leslie Dunn, business administration, Fredericksburg, VA; Ivan Matthew Garrison, business administration with a concentration in professional golf management, Santa Clara, CA; Stephanie Lynn Greene, sociol-

ogy, Altavista, VA; William Chester Holbrook, business administration with a concentration in professional golf management, Wethersfield, CT; Martha Tilley Howard, physical education, Vero Beach, FL; Rori Shani Knight, sociology, Washington, D.C.; Machell Lee Kolb, business administration with a concentration in professional golf management, Youngstown, OH; Christopher Charles Krause, business administration with a concentration in professional golf management, Oshkosh, WI; Marcus Delaine Martin, mass communication, Montgomery, AL; Sean Bennett Millard, business administration with a concentration in professional golf management, Stroudsburg, PA; Elizabeth Julia Szoke Owen, accounting, *cum laude*, Troy, OH; Douglas W. Tabler, criminal justice, Cape May, N.J.; William Matthew Tisher, accounting, Anchorage, AL; Jeffrey K. Waffle, business administration with a concentration in professional golf management, Grand Rapids, MI; Christopher J. Warnken, physical education with a concentration in athletic training, Manchester, CT; Cynthia M. Wiley, business administration, Redstone Arsenal, AL; Sandra W. V. Woodard, business administration, North Ridgeville, OH; David Robert Zwayer, business administration with a concentration in professional golf management, Mertztown, PA

Other Countries

Azrul Rashid, business administration with a concentration in professional golf manage-

ment, Kuala Lumpur, Malaysia; Mineko Shimabukuro, accounting and business administration, *summa cum laude*, Okinawa, Japan; Alvy Elizabeth Styles, physical education, *summa cum laude*, Dublin, Ireland.

BACHELOR OF SOCIAL WORK Cape Fear Region

Fayetteville: Tonia Renea Bailey, Robert Lewis Reeves, *magna cum laude*; Stacy Anne Rushton, Kimberly Ann Webb, double major in social work and sociology, *cum laude*.

Other Areas

Megan Lisa Burnett, Reston, VA; Fiona Mary Grogan, double major in social work and sociology, *cum laude*, Louth, Ireland.

ASSOCIATE OF ARTS Cape Fear Region

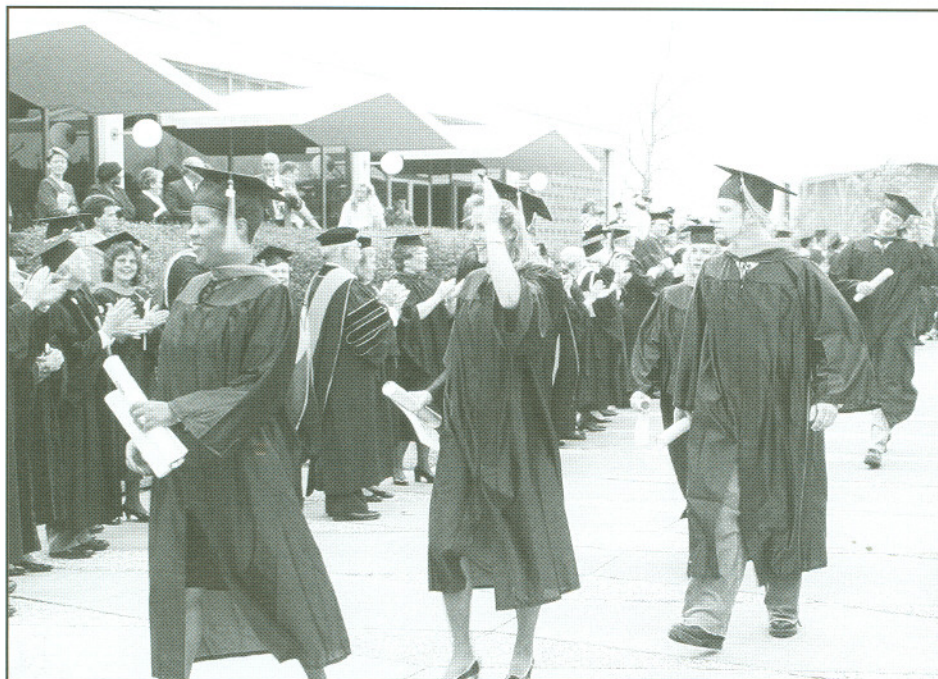
Fayetteville: Renadelca Sharan Alexander, general studies; Howard Lynn Brown, general studies; Kristin M. Klarenbeek, business administration; Donna B. Leinbach, general studies; Larry A. Steele, criminal justice; Brenda Kay Tew, business administration; Kevin Howard Vos, accounting and business administration; Raymond Scott Watts, business administration; Steven P. Young, general studies.

Fort Bragg: Edwin Guzman, mathematics; Loren Douglas McNearney, general studies; Amanda Wales Post, criminal justice; Dareen R. Roberts, Spanish.

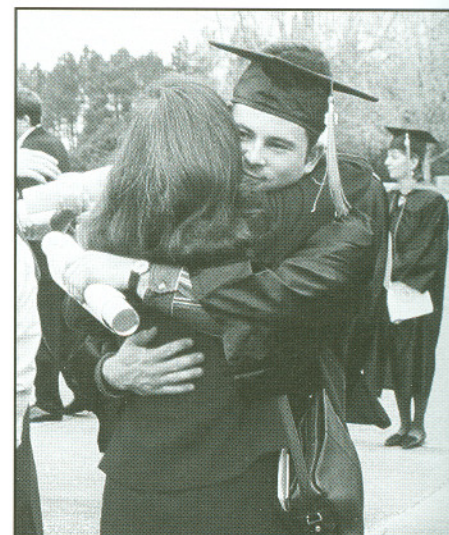
Parkton: Allan Baldwin Jennings, finance and economics.

Honors

Summa Cum Laude—3.90
Magna Cum Laude—3.70
Cum Laude—3.40



Graduates file through the honor cordon after emerging from Reeves Auditorium.



Congratulations!

1996 Annual Report



M. Elton Hendricks
President

Dear Friends and Alumni:

In 1996, Methodist College celebrated its first 40 years. Methodist's ability to withstand troubling times in those early years and turn them into strengths is a testament to the people of Cumberland County, the Trustees, Alumni, faculty and staff, and a growing list of friends.

We've come a long way from a peach orchard and cotton field. Today, twenty-eight buildings dot our 600-acre campus, with two more in the planning phases. While new buildings relate directly to the College's rapid growth over the past six years, renovations and modernization of existing structures continue. It is a slow process, but one to which we are committed.

Currently, we are in the final phase of our \$6.5 million capital campaign—*Expanding the Vision*. This campaign is providing needed resources to our academic programs with three new buildings—the Math and Computer Science Building, which will be ready for use in the fall of 1997; the Academic Building, designed to provide additional classroom space and faculty offices; and an addition to Davis Memorial Library, which will allow for expanded holdings and a contemporary media center. In addition, the campaign dollars are adding to our endowment and providing the funds for general operating expenses.

We have just passed \$5.5 million and must reach our goal by December 1, 1997. When we reach our goal, we will receive a \$300,000 challenge grant from the Kresge Foundation. Many of you remember it was this foundation that helped make the March F. Riddle Physical Activities Center a reality in 1990.

Methodist College can be proud of its accomplishments during its first 40 years. The gifts we received in 1996 show a 2% increase over 1995. Your belief in Methodist College, and the education it provides, strengthens our resolve to push for excellence in education. With your continued support we will meet our goals.

On behalf of everyone at Methodist, I thank you for your help this past year. As we approach the goal of the *Expanding the Vision* campaign, I hope you will join us in celebrating the next 40 years as well.

Sincerely,

M. Elton Hendricks
M. Elton Hendricks
President

1996 Annual Report

Mrs. Margaret Kaye Bledsoe
 Mr. and Mrs. J.K. Bostick, Sr.
 Mr. Barry Arnold Box
 Mrs. Josephine S. Boyd
 Judge and Mrs. E. Maurice Braswell
 Briggs & Sons Tire
 Mr. Bruce D. Bright
 Mr. Harry L. Britt, Jr.
 Mr. Charles W. Broadfoot, III
 Mr. Hal Broadfoot, Jr.
 Ms. Bette Broadwell
 Mr. and Mrs. Robert E. Broncill
 Mr. and Mrs. Edwin N. Brower, Jr.
 Mr. John W. Brown
 Mr. Dennis L. Bruce
 Dr. Joseph Brum, Jr.
 Mr. and Mrs. A. B. Bryant
 Mrs. Ida R. Bryant
 Mrs. Marion H. Bryant
 Mrs. Betty C. Bunce
 Mr. Johnny Clyde Byrd
 Mrs. Debra A. Byrum
 Mr. Levie C. Cameron
 Mr. Henry C. Campen
 Ms. Ruby J. Campen
 Cape Fear Amateur Radio Society.
 Mr. Aubrey W. Carter
 Mrs. Dawn R. Carter
 Mrs. Sandra M. Carter
 The Reverend Theodore V. Carter, Sr.
 Caviness & Tolbert
 Cellular One
 Mr. Robert J. Chaffin
 Chandler's Piano Service
 Mr. Jason R. Cherry
 Christian Youth Fellowship Cape Fear
 Conference
 Chums, Inc.
 Dr. John C. Clamp
 Mr. James W. Clark
 Mrs. Mary Pride Clark
 Mrs. Beverly D. Cleverley
 Clinton Machine Company
 Dr. and Mrs. Charles Q. Coffman
 Dr. Dan Cogswell
 Mr. Ronald K. Coleman
 Coleman Sporting Goods, Inc.
 Mr. and Mrs. C. Wayne Collier
 Collier Insurance and Assoc.
 Mr. and Mrs. Timothy Combs
 Mr. Ronald D. Cooke
 Dr. Gary B. Copeland
 Copiers Plus, Inc.
 Mrs. Duke B. Crane
 Cross Creek Merchants Association
 Mrs. Ruth R. Crumley
 Mr. Brian D. Cuppett
 Mr. Paul R. D'Alpe
 Dr. C. T. Daniel
 Mrs. Libby S. Daniel
 Mr. Terry F. Daniels
 Mr. Russell E. Davenport, Jr.
 Mr. Richard Lee Dean
 Deco Car Wash
 Mrs. Kay R. Demyan
 Mr. T. John Dexter, Jr.
 Dickens & Bass Real Estate
 Ms. Gail Dickinson
 Mr. A. G. Mason Dirickson
 Mr. and Mrs. Graham Dozier
 Mr. Harold D. Downing, Jr.
 Mr. Christopher G. Drew
 Mr. and Mrs. S. S. Dunn
 Mr. Samuel Dunn
 Dunn's Nursery & Garden Shop
 Eastern Medical Consultants
 Mrs. Tammy Edens
 Mrs. Karen Jones Ehle
 Mr. Jimmy R. Elledge

Employee Benefit Systems, Inc.
 Ms. Lutte Erwin
 Esther Williams Scholarship
 Mrs. Ada R. Evans
 Fayetteville Plastic Surgery
 Mr. Robert W. Ferris
 Finch Oil Company
 Mr. E. Wilson Fisher, Jr.
 Dr. and Mrs. Malcolm Fleishman
 Mr. and Mrs. Herbert Fleishman
 Floral Arts, Inc.
 Mr. Carl D. Ford, Jr.
 Mr. Robert C. Foreman
 Mrs. Helen C. Foster
 Mr. G. Leslie French
 Dr. and Mrs. E. C. Garber, Jr.
 Dr. and Mrs. F. S. Gardner, Jr.
 Mr. John M. Gillis
 Capt. Howard E. Gray, (Ret.)
 Great Plains Cattle Company
 Mr. Larry Green
 Mr. Trent A. Gregory
 Mr. Robert W. Griffin
 Dr. and Mrs. Lavelly D. Gruber
 Mr. Roy J. Haddock, Jr.
 Mr. O. Alex Hager, II
 Mr. Phil W. Haigh, Jr.
 Dr. and Mrs. James S. Hall
 Mrs. Lois B. Hall
 Mr. Swayn G. Hamlet
 Major General John W. Handy, USAF
 Mr. Alfred S. Hare
 Mr. Alton L. Hare
 Mr. and Mrs. James S. Harper
 The Harriet & Frank Sherman Fund for
 Education
 Mr. Billy Harrington
 Mr. Charles V. Hartsell, Jr.
 1SG Thomas S. Hatfield, USA (Ret.)
 Mrs. Mary Flagg N. Haugh
 Mrs. Evelyn G. Hauser
 Mr. Timothy A. Helms
 Mr. John T. Henley
 Mr. Charles S. Hester
 Highland BP Service
 Highland Cleaners, Inc.
 Highland Press, Inc.
 Mr. J. Daniel Highsmith
 Mr. Richard H. Hobgood
 Hodges Associates, Inc.
 Mr. and Mrs. John F. Holmes
 Mr. Charles B.C. Holt
 Mr. Jack Ray Honeycutt
 Mr. Thomas A. Hood
 Mrs. Darlene Hopkins
 Ms. Dorothy Hubbard
 Mr. John T. Hughes, Jr.
 Mr. Thomas K. Hughes
 Reverend Jack M. Hunter
 Mr. and Mrs. Melvin Hurless
 Mr. John W. Hurley
 Mr. and Mrs. Arthur P. Hurr
 Mr. Clyde F. Hurst, III
 Mrs. Patricia D. Hutaff
 J & S Locksmith
 Mr. Glenn R. Jernigan
 Mrs. Jo Beth Johnson
 Mr. Tim Johnson
 Mr. Robert A. Jones, Jr.
 Dr. Thomas H. Jones
 Dr. and Mrs. Weldon H. Jordan
 Mr. I. B. Julian
 Mr. and Mrs. William Julian
 Judge A. Elizabeth Keever
 Ken C. Lancaster Real Estate
 Mrs. Virginia K. Kern
 Mr. and Mrs. Keith Kildow
 Kim's Nail Boutique
 King Electric of Fayetteville

Kiwanis Club of Linden, NJ
 Dr. Barbara Klein
 Mr. Frederic John Koch
 Ms. Cheryl Kremer
 Mr. Kevin C. Kriews
 Mr. and Mrs. Mamoru Kubota
 LaFayette Motor Sales, Inc.
 Ms. Lois J. Lambie
 Mr. C. DeWitt Lancaster, Jr.
 Mr. and Mrs. Kenneth Lancaster, Jr.
 Mr. and Mrs. William T. Landis, III
 Ms. Rosemary J. Lands
 Mr. Ron LaVoie
 Mrs. Barbara Ann Lawson
 Ms. Belinda A. Lellock
 Col. Alfred Lemire, (Ret.)
 Leon Sugar's Men Shop
 Mr. Phillip A. Levine
 Dr. Kenneth B. Lewis
 Ms. Mary F. Lewter
 Mr. David R. Lindsey
 Mr. and Mrs. Rickey L. Lindsley
 Mr. James F. Loschiavo
 Mr. Joseph Maloney
 Mr. Tom Manning
 Mrs. Elaine Marshall
 Ms. Aubrey M. Masilela
 Mr. Thomas H. Matthews
 Dr. Harold E. Maxwell
 Mr. Thomas C. Maze
 Mr. Bobby C. McAlpin
 Mr. Jerry McCown
 Mr. and Mrs. Eddy McDonald
 McDonald Lumber Company, Inc.
 Mr. Edward B. McEnroe
 Mr. Robert McEvoy
 McFadyen Music Company
 McGeachy & Hudson Attorneys
 Mr. Paul A. McKee, Jr.
 Mr. John L. McKinney
 Mr. Thomas R. McLean
 Reverend Dr. Samuel D. McMillan, Jr.
 Mr. Donald L. Melvin
 Mrs. Betty H. Messer
 Mr. and Mrs. Kendall R. Meyer
 Mr. and Mrs. Mark Midford
 Mr. Elmer R. Midgett, Jr.
 Mr. Gregory E. Miller
 Bishop C. P. Minnick, Jr.
 Mrs. Cheryl C. Mitchell
 Mr. Steven P. Mitchell
 Mr. and Mrs. E. Ray Moore
 Mrs. Jean Moore
 Mr. William T. Moore
 Mr. and Mrs. Frank M. Moorman
 Dr. Peter Murray
 Ms. Anne M. Nimocks
 Northern Ohio Caddie Fnd.
 Mr. and Mrs. Eugene S. Odom
 Mrs. Sarah O'Hanlon
 Mr. Ned Olinger
 Dr. and Mrs. Clarence S. Olive
 Mrs. Leta S. Olson
 Osborne Glass Company, Inc.
 Mr. Roger D. Pait
 Mr. Jim Peebles
 Mr. Robert Perkins
 Mr. Chappie Petree
 Mr. Robert J. Pilewski
 Pleasant Grove UMC
 Mr. and Mrs. Thomas A. Pope, Jr.
 Dr. Kenneth A. Popio
 Mr. Terry D. Preiss
 Dr. William L. Pritchard
 Mrs. Linda Raide
 Ms. Nancy J. Ramsey
 Mr. Claude W. Rankin, Jr.
 Ready Mixed Concrete
 Mr. Richard D. Reece

Rhudy's, Inc.
 Mr. William M. Richardson, Sr.
 Mr. R. Eugene Rickmond
 Mr. John G. Roberts
 Rogers & Breece, Inc.
 Dr. and Mrs. Otto Rogers
 Roy Haddock Surveying Co.
 Mr. and Mrs. Richard F. Rozzelle, IV
 Mr. Albert E. Rummans
 Mr. Dean F. Russell
 Mr. and Mrs. Leonard Saleeby
 Mr. and Mrs. Michael B. Saunders
 Mr. Don Sawicki
 Ms. Paula Marie Schloer
 Mr. Herbert A. Schroer, Jr.
 Sears-Roebuck Company
 Mr. and Mrs. William R. Sharp
 Mr. Robert H. Short
 Shuller-Ferris Associates
 Sigma Construction Co., Inc.
 Mrs. Diana L. Sims
 Dr. Narendra P. Singh
 CDR Sue James Smith
 Mr. W. Thomas Smith
 Mr. and Mrs. Alfred E. Smyntek
 Ms. Mae Belle L. Smyth
 Mr. and Mrs. John Snyder
 Southern Gin & Grain Company
 Southland Rental & Supply Co.
 Mr. Michael E. Stanfield
 Dr. Robert R. Stanton
 Mr. Martin W. Sternlicht
 Ms. Kathy Stewart
 Stewart Oldsmobile Nissan
 Mr. and Mrs. Herbert G. Stiles
 Mr. and Mrs. James S. Stilwell
 Mrs. Sandra Johnson Stolzer
 Mrs. Pamela J. Strickland
 Mrs. Dolores B. Strickland
 Mrs. Ruby Strouse
 Mr. and Mrs. Harold J. Sturdivant
 Miss Mary Lou Suddath
 Mr. L. Thomas Swink
 Ms. Ethel K. Sykes
 Systel Office Automation
 Ms. Elizabeth M. Talbott
 Mr. and Mrs. Richard P. Taylor
 Dr. Harold J. Teague
 Mr. R. Dillard Teer
 Texas YABA Scholarship
 The Honorable Leonard W. Thagard
 Mr. Gilbert M. Thomason
 Mr. Ronald A. Thompson
 Mr. and Mrs. C. Ray Thorne
 Ms. Anne J. Thorpe
 Tile Inc. of Fayetteville
 Tim Newton Real Estate
 Dr. John O. Tobler
 Mr. Joseph H. Todd
 Town of Barre, Mass.
 Townsend Real Estate
 Tri-Arc Food Systems, Inc.
 Triangle Bank
 Mr. R. Wayne Trousdale
 Mr. and Mrs. Wayne Tucker
 Mrs. Mary M. Tyler
 Union Corrugating Company
 United Carolina Bank
 United Methodist Women, Calvary
 Methodist Church
 Mr. and Mrs. Kermit L. Updegrove, Jr.
 Reverend Kenneth S. Valentine
 Dr. and Mrs. Robert L. Van Laningham
 Mrs. Jewell Vanharlingen
 Mrs. Diane W. VanNess-Gabriel
 Mr. Richard W. Vieth
 Mr. and Mrs. C. H. Von Rosenberg
 The Reverend Randy L. Wall
 Mrs. Harriet E. Wallace

Dr. Richard Walsh
 Dr. James X. Ward
 Mr. and Mrs. George H. Waren
 Mr. James R. Warner
 Mr. J. Lee Warren, Jr.
 Mr. L. Stacy Weaver, Jr.
 Dr. and Mrs. Ronald L. Webster
 Dr. James K. Weeks
 Wesley Heights UMC
 Mr. Eric Westerfield
 Ms. Sandra A. Wheeler
 Dr. D. Wayne Whetsell
 Mrs. Allyson M. Whevier
 White City High School Alumni
 Association
 Mr. Roy A. Whitmire
 Mrs. Neill Wilkins
 Mrs. Sherry Lou Wilkins
 Mr. Herman P. Williams
 Ms. Marian W. Williams
 Mr. Stephen A. Williams
 Mr. and Mrs. Sam M. Wilson
 Mr. Doug E. Wolfgang, Jr.
 Mr. and Mrs. C. Fletcher Womble
 Mr. Jerry C. Wood, Sr.
 Dr. Thomas S. Yow, III

Bell Tower Club

(Up to \$99)

Mr. and Mrs. Lynn Aaron
 Mr. Herman L. Adams, Jr.
 Mrs. Lauren B. Adams
 Ms. Paula L. Adams
 Mr. W. Joe Adams
 Mr. and Mrs. Duane R. Adamson
 Mrs. Ruth Aderholdt
 Mrs. Teresa P. Akamatsu
 Mr. David B. Alabaster
 Mrs. Terriane Alexander
 Ms. Kimberly L. Alexander
 Ms. Margaret S. Alexander
 Mr. Michael J. Alloway
 Reverend Gary E. Allred
 Mr. and Mrs. Wayne Allred
 Allstate Insurance Company
 Mr. Jeffrey D. Alton
 Mrs. Sandra Lee Aman
 Ms. Ruth Gilmore Ambrose
 Mrs. Jeanette Anderson
 Ms. Carol Patricia Andre
 Mr. Shawn M. Andrews
 Ms. Camilla S. Antoniel
 Mr. Tom Antoniel
 Mr. and Mrs. Michael N. Arbogast
 Mrs. Linda Archer
 Mr. and Mrs. Scott W. Armentrout
 Mr. D. Michael Arp
 Arran Realty, Inc.
 Ms. Sylvia C. Arvizu
 Mrs. Lynley F. Asay
 Ashford & Company, Inc.
 Mrs. Jean M. Aswad
 Mr. Samuel Q. Atchley
 Audrey's Avicultural Affairs
 Ms. Louise L. Auman
 Mrs. Dawn F. Ausborn
 Dr. Joseph W. Baggett
 Mrs. Carolyn Baldwin
 Mr. and Mrs. John T. Baranowski
 Mr. Robert G. Barker
 Mr. Randall H. Barnes
 Mr. and Mrs. Wayne E. Barnes
 Ms. Irene Barney
 Mr. and Mrs. Pete Barron
 Mr. Malvern S. Barrow, III
 Mr. and Mrs. Reginald M. Barton, Sr.
 Miss Anna Beth Bass
 Mrs. Earlene R. Bass

Ms. Edna Bass
 Bass Music
 Mrs. Susan Baty
 Mrs. Lynda Buie Baum
 Mrs. Anna Baxley
 Mr. and Mrs. Kenneth Beaman
 Mr. Albert Beard
 Mr. E. Wayne Beard
 Mrs. Debbie Beavers
 Mr. P. Nolan Becker
 Mr. Bryan Beckwith, Jr.
 Ms. Camisha M. Bell
 Mr. William T. Bell
 Mr. W. Glenn Bell
 Bell's Seed Store
 Ms. Angela J. Benjamin
 Ms. Willa Bennett
 Mr. and Mrs. Terry C. Bentley
 Mr. Willie E. Bethune, Jr.
 Mr. and Mrs. Frederick L. Beyer, Jr.
 Mr. John Bifareti
 Mrs. Towanna O'Neal Bigford
 Ms. Janet L. Bird
 Mr. Carl C. Birk
 Ms. Rina M. Bishop
 Dr. Erik J. Bitterbaum
 Mrs. Carolyn Bittle
 Ms. Susan Blackburn
 Mr. Harold Blake
 Ms. Judith M. Blake
 Mrs. Ann D. Blalock
 Mr. Michael C. Blewett
 Dr. Paul R. Block
 Ms. Martha Bock
 Mr. Tommy Bolton
 Ms. A. Christine Bolyard
 Ms. Joy A. Bonhurst
 Ms. Karen C. Boone
 Mrs. Kathy Borrelli
 Mr. Robert B. Boswell, Jr.
 Ms. Lynn H. Boyle
 Mr. and Mrs. Robert Bracey
 Mrs. Olivia Godwin Bradley
 Mr. Mark T. Branch
 Ms. Elizabeth Ann Brantley
 Ms. Barbara P. Breece
 Mr. George W. Breece
 Mrs. Lynn Brewer
 Mr. Samuel H. Brick, III
 Mr. Richard C. Briggs, Jr.
 Mr. A. Paul Brill, III
 Mr. Ronald E. Brock
 Mrs. Elizabeth A. Brown
 Mrs. Jo Anna W. Brown
 Ms. Katherine M. Brown
 Mrs. Terri S. Brown
 Mr. W. Christopher Bryan
 Mrs. Barbara H. Bryan-Jones
 Mrs. Catherine Bryant
 Mrs. Angela R. Buchholz
 Ms. Janet K. Buffaloe
 Mr. and Mrs. Anthony Bugeja
 Mr. John G. Buie, Jr.
 Mr. Ben F. Bulla
 Mrs. Brenda Teal Bullard
 Mrs. Donna M. Bullard
 Mrs. Kathryn G. Bundy
 Mr. and Mrs. Kenny M. Burke, Jr.
 Ms. Vivian Burnett
 Mr. Thomas E. Burney, Jr.
 Ms. Ethel L. Burns
 Mr. Harvey L. Burns
 Mr. Aaron M. Burt
 Mrs. Fabienne L. Butler
 Mr. John A. Butler
 Mrs. Julie H. Butler
 Mr. Richard A. Butler, Jr.
 Ms. Paula May Caddell
 Mr. William E. Cagle, III

Mrs. Amelia L. Caison
 Mr. Jim Caison
 Mr. Turner F. Caldwell, III
 Ms. Nancy Grey Calvert
 Mrs. Cindee M. Campbell
 Mr. John F. Campbell
 Mrs. Lynda A. Campbell
 Mr. Donald R. Canady, Jr.
 Mrs. Jean Canham
 Ms. Roxanne R. Cannaday
 Mr. Keith Cannon
 Cape Fear Animal Hospital
 Cape Fear Realty & Brokerage
 Mr. Thomas Carey
 Carlyle Realty, Incorporated
 Ms. Charlotte Carmine
 Mr. Michael James Carpenter
 Mrs. Yvette F. Carson
 Mr. George E. Carter
 Mrs. Janet L. Carter
 Mrs. Sandra T. Carter
 Mr. W. Bradley Carter
 Mr. Curtis A. Cash
 Mrs. Doris Cassanova
 Mr. and Mrs. Danny Cassidy
 Mr. and Mrs. Edwin R. Castle, II
 Mr. Joseph A. Castner
 Mr. Terry David Cathey
 Mr. and Mrs. Lloyd Caulder
 Mr. and Mrs. Hartley Causey, Jr.
 Ms. Eritza M. Centeno
 Mrs. Sarah Edge Cessna
 Champs Sporting Goods
 Mrs. Julia Dixon Chandler
 Mr. and Mrs. Pete M. Chason
 Judge and Mrs. Sol Cherry
 Mrs. Sara Young Chester
 Mr. and Mrs. Michael T. Chiara
 Dr. Ronald Childress
 Mr. and Mrs. John F. Chilton, III
 Mr. and Mrs. Thomas R. Chipman
 Mrs. Elizabeth C. Chismark
 Mrs. Mary T. Choi
 Mrs. Kathryn Christian
 Ms. Esther B. Christian
 Christy Ladies Apparel, Inc.
 Mr. Michael A. Ciani
 Dr. JoAnn Clark
 Mrs. Linda Clark
 Dr. and Mrs. Louis P. Clark
 Mrs. Maureen Clark
 Mr. and Mrs. Samuel J. Clark, Jr.
 Mrs. Carla Clift
 Mrs. Marilyn B. Cline
 Mrs. Mary Lynn Clunn
 Reverend Steven C. Clunn
 Mr. Ronald L. Coats
 Mrs. Harriet Cobb
 Major Robert R. Cobb
 Mr. and Mrs. Kenneth Coker
 Mr. Brett W. Coleman
 Mr. Gregg C. Coleman
 Coleman Realty Company
 Mr. and Mrs. John S. Collie
 Mrs. Mary E. Collier
 Ms. Georgianna Collins
 Mr. and Mrs. Thomas Colucci
 Mr. Charles F. Colyer
 Comfort Inn-Cross Creek
 Mr. Samuel H. Compton, Jr.
 Mr. John Cone
 Mrs. Marie Conner
 Mrs. Cathy Cook
 Mr. Robert J. Cooper
 Mr. Clayton A. Cosner
 Mr. William J. Costin, Jr.
 CDR George S. Council, USN(Ret.)
 Ms. Emma J. Covin
 Mrs. Bonnie H. Crabtree

Mr. Del Crawford
 Capt. Gregory S. Creech
 Mr. Dwight E. Cribb
 Mr. and Mrs. Luis Cribb
 Mr. William B. Crompton, III
 Cross Creek Heating & Air
 Mrs. Helen Emily Crowley
 Mr. and Mrs. Philip J. Crutchfield
 Mrs. Dedra R. Culbreth
 Mrs. Leanah W. Culbreth
 Culbreth Memorial UMC
 Reverend William E. Cummings
 Mr. Burhl Cunningham
 Mrs. Rosemarie B. Cunningham
 Mr. and Mrs. Daniel F. Currie
 Ms. Katrina Currin
 Mr. Richard S. Cutler, Jr.
 Mr. and Mrs. Steve Czajka
 Mr. Jon D. Dalton
 Mrs. Linda A. Damminger
 Ms. Denise L. Darby-Hysell
 David Alabaster Insurance
 David Lain Realtors
 Mr. Charles W. Davis, III
 Mr. and Mrs. James A. Davis
 Mrs. and Mrs. James W. Davis
 Mr. and Mrs. Nathaniel Davis, Sr.
 Mr. Robert L. Davis
 Mrs. Sylvia Brown Davis
 Mr. Alan Dawson
 Mrs. Carolyn H. Dawson
 Mr. Robert G. Dees, Jr.
 Dr. and Mrs. Luciano Del Rosario
 Mr. George F. Dempsey
 Mrs. Patricia DeNeal
 Mr. and Mrs. Ben C. Dennis
 Mr. Timothy A. Dennis
 Mr. Kevin V. Dennison
 Mr. and Mrs. G. Thomas Dent
 Mrs. Ingeborg Dent
 Ms. Janis H. Devalles
 Mrs. Barbara M. Dietrich
 Mr. Keith Dimsdale
 Dixie Pawn Shop-Military Supply
 Mr. Frank F. Dixon
 Mr. John Dixon
 Mrs. Marietta Dixon
 Mr. James Lee Dodrill
 Mr. John F. Doherty, III
 Mrs. Mangala Dongre
 Mr. Randall B. Doucette
 Mr. Brian D. Dougherty
 Ms. Jacklyn Downes
 Mr. and Mrs. Stephen Driggers
 Mrs. C. C. Duell
 Mr. Bradley K. Duenweg
 Ms. Nell Duncan
 Mrs. Angela G. Dunkley
 Dr. E. L. Dunn
 Mr. Edward L. Dunn
 Ms. Sharnel R. Dunn
 Durham District United Methodist
 Women
 Mr. and Mrs. Ronald P. Dykas
 Ms. Nicole R. Eaker
 Ms. Mary Elizabeth Earp
 Mrs. Kensley Edge
 Mr. Walton C. Edge, Jr.
 Mr. and Mrs. Sam R. Edwards
 Mr. and Mrs. Roger W. Ellender
 Elliot Construction Company
 Mr. John Elliott
 Mrs. Rena L. Elliott
 Mrs. Lorraine M. Ellzey
 Mrs. Carole H. Elrod
 Mr. and Mrs. Harold Emling
 Mrs. Brenda Estes
 Mrs. Rhonda Gore Etherden
 Mrs. Victoria S. Etheridge



Students and their families enjoy a breakfast reception at Dr. Hendricks' home as the school year begins.

Mr. and Mrs. Ted Eury
 Mr. and Mrs. Jansen Daryl Evans
 Mr. and Mrs. Monroe E. Evans
 Mrs. Patricia Z. Evans
 Mr. Shikery A. Fadel
 Ms. Rachel Faircloth
 Mrs. Marsha G. Faucette
 Mr. W. Franklin Faulkner
 Fay. Transmission Service
 Mr. Louis Feraca
 Ms. Kellie S. Fernandez
 Mrs. Susan Keeth Fertel
 Mr. and Mrs. Lewis M. Fetterman
 Ms. Abigail R. Findlay
 Mr. Herbert R. Finger, Jr.
 Mr. and Mrs. Ralph Fleming
 Mrs. Rita J. Foley
 Mrs. Jane Ann Folkerts
 Mrs. Jamie Jean Forsee
 Mr. Danny R. Fowler
 Mr. and Mrs. Michael A. Fradel
 Ms. Jennifer Franklin
 Mrs. Teena T. Fraser
 Mr. and Mrs. Robert C. Frazier
 Mr. W. Robert Frazier, III
 Mrs. Karen M. Freeman
 Ms. Susan C. French
 Mr. Daniel P. Froneberger
 Mr. and Mrs. J. Michael Frost
 Ms. Barbara J. Frye
 Mrs. Virginia Frye
 Mr. and Mrs. Steve Gage
 Mr. and Mrs. Frank Gagliano

Mrs. Jill A. Gallen
 Mr. and Mrs. Charles A. Gardner
 Dr. and Mrs. Gary B. Garison
 Mr. and Mrs. James E. Garriss
 Mrs. Ann Gelder
 General Business Services
 Mr. Joseph T. George, Jr.
 Ms. Penny C. George
 Mr. John J. Germano
 Mr. Patrick F. Gibney, Jr.
 Mr. Robert S. Gibson
 Mrs. Sue G. Giles
 Mr. and Mrs. David R. Gilliland
 Mr. Michael W. Gillmer
 Mr. C. John Gissell
 Mr. and Mrs. Jeffrey D. Glendening
 Reverend Phillip R. Glick
 Mr. and Mrs. A. P. Gnann, Jr.
 Mr. Robert W. Godwin
 Mrs. Mary E. Goins
 Gomez Auto Service
 Mr. Michael W. Gonella, Sr.
 Mrs. Patsy J. Gordon
 Mr. L. James Gosier, Jr.
 Mr. and Mrs. Earl E. Gottsman
 Mrs. Gerald F. Gouge
 Mr. Edmund L. Grady, Jr.
 Dr. and Mrs. Louis G. Graff
 Mrs. Gail Graham
 Mr. John Alwin Graham, Jr.
 Mr. and Mrs. John Graham
 Ms. M. Janet Graham
 The Reverend Henry Boone Grant, Jr.

Mr. Jesse P. Gray
 Mrs. Joan E. Gray
 Mr. John R. Green, Jr.
 Mrs. Wanda T. Gregory
 Mr. Bevan Grice
 Mr. Roger W. Grider, Jr.
 Mrs. Celia Abernethy Griffin
 Mr. Daniel C. Griffin, III
 Col. and Mrs. R. Travis Griffin
 Mr. and Mrs. James P. Groseclose
 Mrs. Diane Gross
 Mr. Paul D. Grove
 Mr. and Mrs. John Gudauskas
 Mrs. Judy C. Gum
 Mrs. Lynn M. Guthrie
 Mr. and Mrs. Danny F. Hagans
 Mrs. Maurine N. Hale
 Mr. Ernest Wayne Hall
 Mrs. Mary C. Hall
 Mrs. Rhonda Smith Hall
 Mrs. Willisteen D. Hall
 Mr. Robert D. Hamilton, Sr.
 Ms. Katherine Hammill
 Mrs. Ann Y. Hampton
 Ms. Grace Alvina M. Haney
 Mrs. Charlotte Hardison
 Mr. John T. Hardy, Jr.
 Mr. C. Carson Harmon
 Mr. Robert L. Harmon
 Reverend Claudia Gail Harrelson
 Mrs. Sylvia G. Harrelson
 Mr. J. C. Harris, III
 Mr. Rodney C. Harris

Mrs. Dianne Lowdermilk Harvey
 Mrs. Marcia Faye Hasie-Daniels
 Mr. Jeffrey H. Haskett
 Col. Clark W. Hastings, USA (Ret.)
 Mrs. Belinda R. Hawley
 Mr. B. Allen Hayes
 Hayes Hobby House, Inc
 Haymount United Methodist Men
 Mr. Henry Heath, Jr.
 Mr. David L. Herring
 Mrs. Lucy H. Hieronymus
 Mr. and Mrs. Sidney R. High
 Mrs. Zula High
 Highlander Golf, Inc.
 Ms. Carol L. Higy
 Mr. and Mrs. Ambrose P. Hill
 Mr. Barnett H. Hill
 Mr. Bobby Hill
 Reverend Jan N. Hill
 Mr. and Mrs. Rodney L. Hill
 Mr. and Mrs. Glen M. Hinnant
 Mr. Roger B. Hobgood
 Ms. Bette Hoffman
 Mr. Harry W. Hoffman, III
 Ms. Mary M. Holben
 Mrs. Iris Stewart Hollis
 Mrs. Sallie King Hollis
 Mr. Harold D. Holmes
 Mrs. Hannah Holt
 Mrs. Peggy Holt
 Home Exteriors of Fayetteville
 Homemakers Furniture Interiors
 Mrs. Beverly Parks Honeycutt

- Mrs. Linda Johnson Hood
Hope Mills Family Medicine Ctr
Mr. Stephen W. Hopkins
Mr. Barry Horne
Ms. Pam Horne
Mr. Reid A. Horne
Mr. and Mrs. Ronald L. Horne
Mrs. Carolyn L. Horsley
Mrs. Belinda Howard
Ms. Doris W. Howard
Mr. and Mrs. Clyde M. Howie
Mr. Timothy D. Howie
Ms. Irmgard Kolmorgen Hoy
Mr. Elmer C. Hubbard
Mr. and Mrs. Gary Huffman
Mrs. Jennifer B. Huggins
Mr. J. Stewart Humphrey
Ms. Janice E. Humphreys
Mr. John E. Humphreys
Hunter Brothers
Mr. Brad Hurley
Mr. Mark Hurley
Mr. and Mrs. W. D. Hux
nacom Computer Center
Mrs. Sandra H. Ivarsson
Ms. Suzan Iwerks
J. Barnes Mechanical Co.
Leonard Davis Insurance
Mrs. Myra Jackson
Mrs. Susan Yost Jaeger
Ms. Michelle A. Jahren
Mrs. DeeDee M. Jarman
Mr. and Mrs. Robert M. Jeffreys
Ms. Cheryl Jeffries
Mrs. Laurie A. Jennings
Mr. Teddy W. Jernigan
Mr. Robert Bruce Jervis
Mr. and Mrs. Vaughn L. John
Mr. Charles R. Johnson
Mr. and Mrs. Curement L. Johnson
Mrs. Debra C. Johnson
Mr. and Mrs. Douglas C. Johnson
Mr. Gordon E. Johnson
Reverend James W. Johnson
Mr. and Mrs. Johnny F. Johnson
Mrs. Laura E. Johnson
Mrs. Melissa W. Johnson
Mr. and Mrs. Richard L. Johnson
Mr. Robert W. Johnson
Mr. Barry L. Jones
Mrs. Cynthia M. Jones
Mr. Ronald W. Jones
Mr. John A. Jordan, III
Mrs. Marjorie M. Jordan
Mr. Willie J. Joseph
Reverend and Mrs. F. B. Joyner, Jr.
Mrs. Gail H. Joyner
Mr. and Mrs. Roger E. Jumper
Mr. James E. Justice
Mr. Laura G. Kafka
Mr. and Mrs. Harry H. Kamens
Mrs. Laura J. Kamionka
Reverend Linda K. Karalfa
Ms. Caroline F. Kearns
Mrs. Terrie L. Kelemecz
Mrs. Jody K. Kelley
Mr. and Mrs. Frank Kelly
Mrs. Iva M. Kelly
Mr. Holly Kendrick
Mrs. Gayle Rogers Kent
Reverend W. Verdery Kerr
Mr. and Mrs. James R. Ketchem
Mrs. Anita Fisher King
Mr. Billy R. King
Mrs. Martha G. King
Mrs. Vera B. King
Mrs. Sheila Kinsey
Mrs. Dorothy C. Kirkpatrick
Mrs. Joy Kirkpatrick
- Mr. and Mrs. Ernest P. Kirsch
Mr. Scott Kitrell
Mrs. Carolyn G. Kneas
Reverend Dr. Garland Knott
Mr. William F. Knowlton, II
Mr. Michael Kohn
Ms. Jo Ann Elizabeth Kopp
Mr. John W. Korbach, III
Mr. Benjamin Kotin
Ms. Barbara A. Kushubar
Mrs. Edwina Kyle
Mr. and Mrs. Evan H. Lacy, III
Reverend James R. Lancaster, Jr.
Mrs. Patricia Lancaster
Mr. and Mrs. Don H. Landreth
Mr. and Mrs. Leon Landry
Mr. Donald H. Laney
Mr. Mark L. Lange
LTC and Mrs. Marshall A. Lanter, (Ret.)
CW2 Robert L. Larsen, USA
Mr. and Mrs. Joseph J. Lassiter
Sandra J. Latta
Mr. Frank K. Layton, Jr.
Mr. Barry M. Lea
Mr. Loran E. Leck
Mr. Paige Ledford
Mrs. Jeanene Lee
Mrs. Neill Legg
Leith Mitsubishi-Isuzu
Mrs. Jean Lemke
Mr. and Mrs. Jesse Leneave
Mr. W. Chuck Levorse
Mr. Gary F. Lewis
Mrs. Karen Ann Lewis
Dr. Jen-Hsiang Lin
Ms. Aimee R. Linder
Mr. Rick Lindner
Mr. and Mrs. William M. Lineberger
Mrs. Linda Lingerfeldt
Mrs. Dena S. Lingle
MSGT Matthew E. Linn, USA (Ret.)
Mr. John B. Lipscomb, Jr.
Lisa's Picture Framing
Mr. and Mrs. Greg Liss
Little & Pulley Office Machine
Mr. David J. Little
Mr. William F. Little, III
Lizzie Lamb Bible Class
Mr. George Wallace Locke
Mr. David F. Lockhart
Mr. and Mrs. Ricky L. Logue
Ms. Phyllis J. Long
Mrs. Misty Kaye Looney
Mr. C. Keith Love
Mr. Dallas D. Lowdermilk
Mr. and Mrs. Dallas H. Lowdermilk
Mrs. Ann L. Loyd
Ms. Amy Jo B. Lucas
Mr. Cabell Luck, Jr.
Mrs. Joy Gilbert Ludwick
Mr. and Mrs. Richard H. Luedeke
Mr. Terry D. Lydick
Mr. and Mrs. John W. Lynch
Mrs. Brenda Lyons
Mr. and Mrs. Richard Lyons
Mr. Alton E. Mabb, Jr.
Mr. Alan Thomas Mabry
Mr. J. Allen MacDonald
Mr. Stuart E. MacIntyre
Reverend and Mrs. J. Tal Madison, Jr.
Dr. George Maguire
Mail Boxes Etc.
Dr. and Dr. Thomas N. Maki
Mr. Chester S. Makowski
Ms. Tracy L. Maness
Mrs. Deborah C. Manning
Mrs. Claire S. Mansfield
Mr. Pedro D. Mar-Lasso
Mr. Jerrold A. Marcus
- Ms. Ann Frances Marenick
Mr. Alfred E. Marlowe
Mrs. Patricia C. Marples
Marsh Kitchens of Fay., Inc.
Mr. David K. Marshall
Mr. Rufus Marshall, Jr.
Mr. Larry L. Martens
Mr. William M. Martier, II
Mr. Gregg Martin
Ms. June Martin
Dr. Mary Anne Martin
Mrs. Margaret A. Martin
Mrs. Theresia Howland Mask
Mr. Frank Mason
Mr. and Mrs. Guy E. Mason, Jr.
Mr. Romulus A. Mason
Mr. and Mrs. Thomas Massaro
Mr. George Massengill
Mrs. Lena J. Massengill
Mr. and Mrs. Bobby Matthews
Mr. Brent A. Matthews
Ms. Helen M. Matthews
Mr. Joe Thomas Matthews
Mr. Ronald F. Matysek, Jr.
Mrs. Robin M. Mauck
Mr. Carmon A. Maxwell
Mr. David E. Maxwell, Jr.
Mrs. Claudia H. May
Mrs. Terri Hawley Maynard
Mrs. Michele Y. Mazique-Donadio
Mr. Phillip L. McAllister
Mr. F. Milo McBryde
Ms. Faye D. McCall
Mr. and Mrs. Floyd W. McCall
Mr. and Mrs. J. L. McCall
Mr. John L. McCall
Ms. Mary F. McCall
Dr. Clyde G. McCarver
Mr. Ronald N. McCullen
Mrs. Harriett Smith McDonald
Reverend and Mrs. J. Richard McDowell
Mr. David P. McDuffee
Mr. and Mrs. G. M. McDuffie
Mrs. Mary Etta McFadyen
McFadyen and Sumner CPA's
Mr. Marvin McGathy
Ms. Susan R. McGehee
Ms. Paula K. McGrann
Mrs. Maria E. McIver
Mrs. L. Nicole McKinney
Mr. Joseph K. McKoy
Mr. Loche A. McLean
Mr. B. Franklin McLeod
Mr. Larry S. McMillin
Ms. Felice E. McNair
Mr. Neil McNeill
Mrs. Kathy D. McPhail
Dr. Linda Carol McPhail
Mr. W. Terry McPherson
Mr. Glen E. Meade, Jr.
Mr. and Mrs. Samuel H. Meares
Mecco Construction Company
Mr. L. Richard Meissner, Jr.
Ms. Eunice H. Mellott
Reverend Benjamin Ray Melvin
Mr. Ralph P. Melvin
Mr. Leslie J. Mengel
Mr. Rick Merrill
Merrill Lynch
Mid-Way Barber Shop
Midas Muffler Shops
Mrs. Lynn E. Midgett
Military Pawn Shop
The Mill End Store
Mrs. Barbara Sue Miller
Mr. Frederick J. Miller, Jr.
Mrs. Ingrid J. Miller
Mrs. Mary Jane Miller
Mr. and Mrs. Ralph H. Miller
- Mrs. Donna H. Mims
Ms. Pat Mingle
Mrs. Rainelle D. Mishoe
Mr. Herbert L. Mitchell, III
Mr. and Mrs. John C. Mitchell
Ms. Michelle D. Mitchell
Mr. Terry A. Mitchell
Mr. John M. Monaghan, Jr.
Mrs. Antonette B. Monroe
Mrs. Margaret C. Moody
Mr. and Mrs. Thomas Moody
Mr. and Mrs. Doug Moore
Mr. and Mrs. L. E. Moore
Mr. D. Scott Morgan, Sr.
Mr. William G. Morgan, Jr.
Mr. Charles C. Morris
Mr. Craig A. Morris
Mr. and Mrs. Joe H. Morris
Morris, Colyer & Associates
Ms. Pearlina B. Morrison
Mr. and Mrs. Robert B. Moseley
Mrs. Gay Moser
Mr. James Mulkin
Mrs. Georgia C. Mullen
Mr. Joseph E. Mullen
Mr. and Mrs. Mack Mullis
Dr. Allen Mumper
Mr. and Mrs. Gerald C. Musselwhite, Jr.
Mrs. A. Regina Myers
Mrs. Claudia J. Myers
Mrs. Debra Pollock Myers
Mr. Mike Myers
Mrs. Susan P. Myers
Mr. Nott Naganidhi
Mr. William C. Nebrich
Ms. Debra E. Neill
Neill Lindsay Insurance Agency
Col. and Mrs. Robert B. Nelson
New Sanford Milling Company
Mrs. Lila F. Nicholson
Mrs. Scheherazade Nobles
Mr. and Mrs. Jerry D. O'Quinn
Mrs. Karla Oates
Mrs. Kathryn S. Offenhauser
Mr. and Mrs. James E. Ohlmacher
Mr. and Mrs. Thomas Olcott
Mr. and Mrs. Gary Olney
Mr. Jeffrey A. Olson
Mr. V. R. Outlaw, Jr.
Mr. Dana E. Overdorf
Mr. Vernon Owens
Mrs. Jeanne Panka
Mr. and Mrs. Vincent M. Paolozzi
Pappas Drive-In
Mrs. Diane M. Parfitt
Ms. Marion Parham
Mr. Ernest W. Parker
Mr. and Mrs. Jimmy Parker
Ms. Myra R. Parker
Mr. William Parker
Mr. and Mrs. Ervin L. Parrish
Partners for Education
Mr. Andrew F. Pasternak
Mr. Louis Patalano, III
Mr. John C. Pate
Mr. and Mrs. Thomas V. Pate
Mr. Mark Patten, III
Mr. Lue J. Patterson
Mrs. Rebecca H. Pattishall
Mr. and Mrs. Robert Paye
Mr. and Mrs. William W. Pearce
Ms. Mary Helen Pearsall
Mr. Robert A. Peele
Mr. Troy A. Pennington
Mrs. Brenda H. Peregoy
Mr. Edward A. Perry
Mrs. Carol L. Peterson
Mr. and Mrs. Earl Peterson
Mr. James M. Peterson

1996 Annual Report

Mr. Todd L. Peterson
 Mrs. Tonie M. Peterson
 Mr. and Mrs. William A. Pettit
 Dr. John C. Peyrouse, Jr.
 Mr. and Mrs. James J. Phillips
 Mr. Ronald K. Phipps
 Mr. Albert R. Pierce
 Mrs. Virginia M. Pierce
 Miss Helen Marie Pilkay
 Capt. and Mrs. John P. Pilon, Sr.
 Pilot Club of Fayetteville
 Mr. Francis R. Pineiro
 Pinnacle Home Builders, Inc.
 Mr. Francis Piri
 Mr. Lee Roy Pittard, III
 Mrs. Mandy Pittman
 Mr. and Mrs. Terry R. Plank
 Mr. Jerry Plumley
 Mrs. Carmen S. Pomeroy
 Mr. James D. Poole, Jr.
 Mrs. Mary Spilman Poole
 Mrs. Ann M. Pope
 Mr. Richard S. Pope
 Dr. Michael Potts
 Mrs. Daryl Poulk
 Ms. Eleanor S. Powell
 Dr. Julia Prewitt
 Mrs. Sylvia Vessels Price
 Mr. Lawrence M. Priest
 Mr. Henry Pulliam
 Mr. and Mrs. C. Allan Purgason
 Mr. Kelly D. Puryear
 Mr. and Mrs. Eric Qually
 Ms. Monique Quattlebaum
 Mr. H. Oscar Queen, III
 Mr. Steven P. Quigley
 Mr. Joseph E. Quinn, Jr.
 Ms. Karen A. Rafferty
 Mrs. Laura V. Rambeau
 Mr. and Mrs. Jose G. Ramirez
 Mr. James J. Rapalje
 Mrs. Janet M. Raskin
 Mr. and Mrs. Brian M. Ravenelle
 Mr. Hector N. Ray
 Mrs. Marie Z. Reale
 Mr. and Mrs. Daniel H. Reaves
 Mr. Robert B. Reaves
 Mr. Larry G. Reavis
 Mr. and Mrs. John K. Redmon
 Ms. Jeanne Maureen Reed
 Mrs. Robin Register
 Ms. Diana L. Reichelderfer
 Mrs. Merle B. Reichle
 Mrs. Susan P. Reinhardt
 Ms. Kathy D. Reynolds
 Mrs. Emmi M. Rhodes
 Mrs. Janice Marcy Rhue
 Mr. Mark Rice
 Mrs. Sue W. Richards
 Mrs. Earline P. Riddle
 Ms. Janet Ridgen
 Ms. Krista L. Riley
 Mr. and Mrs. John M. Rimm
 Mr. Thomas E. Rittenhouse
 Mr. and Mrs. Rafael C. Rivera
 Roadway Package System, Inc.
 Mrs. Karen Roberts
 Mr. Nat Robertson, Jr.
 Ms. Blair Robertson
 Col. Marion D. Robertson, Jr.
 Mr. Wayne M. Robinson
 Mr. Brian R. Rodgers
 Mr. and Mrs. J. Michael Rogers
 Mrs. Vicki L. Ronsick
 CSM George D. Rorback Jr., USA (Ret.)
 Mr. Abdeliz Rosa
 Mr. Gordon Rose
 Mr. James Rose
 Mrs. Louise H. Rouse



The Jesse Smith Woodcutting Project is held each fall to provide firewood for needy families in Fayetteville.

Mr. Travis Rouse
 Reverend and Mrs. James C. Rowlette
 Mr. Russell S. Rozzelle
 Mr. and Mrs. R. Frank Rozzelle
 Mr. and Mrs. Charles Ruffing
 Mrs. Doris D. Rulnick
 Ms. Melissa J. Russell
 Russell Petroleum, Inc.
 Mr. and Mrs. J. D. C. Ryan
 Mr. Richard C. Ryan
 Mr. Jeremy R. Sachs
 Mr. and Mrs. Louis Safley
 Ms. Dolores M. Sanchez
 Mrs. Carol D. Sanders
 Mr. and Mrs. Thomas A. Sanders
 Sandhill Property Management
 Mr. Craig J. Sandstrum
 Mr. Terry Sanford
 Ms. Lorie M. Sanuita
 Ms. Kelli K. Sapp
 Major Sarah B. Satterfield, USA (Ret.)
 Mr. Wilford R. Saunders
 Mr. William J. Saunders
 Ms. Peggy G. Sautter
 Dr. and Mrs. Charles F. Scarborough
 Mrs. Linda Schafer
 Mrs. Patricia S. Schob
 Mr. and Mrs. James A. Schuermann
 Ms. Martha Scott
 Mrs. Peggy H. Scott
 Mr. Robert G. Scott
 Mr. A. Robert Searle
 Select Fashions of Fayetteville
 Mrs. Carolyn Sellers
 Mrs. Cynthia Barr Selvidge
 Ms. Lisa A. Sessoms
 Mr. and Mrs. Talmage W. Sexton
 Mr. Louis E. Seymour, II
 Mrs. Judith B. Sharpe
 Mrs. Mary Ann D. Sharpe
 Mr. Forrest C. Shaw, III
 Ms. Judith L. Sheldon

Mr. and Mrs. W. T. Shepherd
 Mr. Dana J. Shirley
 Show-N-Pet
 SFC Johnnie L. Shubert, Jr.
 Dr. Christian F. Siewers
 Mr. James E. Simmons, IV
 Ms. Ann R. Simoneau
 Mrs. Sandy Simpler
 Mr. Robert L. Sinodis
 Mrs. Laurier Sirois
 Mr. and Mrs. George K. Skenteris
 Mr. Harold Glenn Slaughter
 Reverend Adolph C. Smith
 Mr. Arthur Smith
 Mrs. Colleen Warner Smith
 Mr. David C. Smith, Jr.
 Mrs. Donna D. Smith
 Mrs. Ella Rose Smith
 Ms. Evelyn Smith
 Mr. Greg Smith
 Ms. Josephine K. Smith
 Mrs. Karla Smith
 Mrs. Lydia B. Smith
 Mrs. Lynne D. Smith
 Mrs. Patricia H. Smith
 Mr. Raymond H. Smith, Jr.
 Mrs. Sandra L. Smith
 Mr. Steven Smith
 Mrs. Sue Hatch Smith
 Mrs. Susan K. Smith
 Mr. Thurman L. Smith
 Ms. Vivian M. Smith
 Ms. Sharon Smyzuk
 Mrs. Jean S. Snively
 Mr. Barry I. Souders
 Mr. Alex Southerland
 Mrs. Mary Alice L. Southerland
 Mr. and Mrs. William R. Spade
 Mr. and Mrs. Timothy W. Spangler
 Mr. K. Owen Spears, Jr.
 Spectacles
 Mr. and Mrs. James L. Speed

Mr. Robert O. Spicer, Jr.
 Mr. and Mrs. Don Spriggs
 Mr. and Mrs. Thomas H. Stanley
 Mr. Frederick M. Stanton, Jr.
 Mr. and Mrs. Ambrose R. Staples
 Mrs. Susan O. Stauffer
 Mrs. Lori S. Stephenson
 Stereo World
 Mr. Bruce Edward Stevens
 Mrs. Linda R. Stevens
 Dr. and Mrs. Albert Stewart, Jr.
 Mr. and Mrs. Wayne Stewart
 Mr. Marlin M. Stewart
 Ms. Yvonne R. Stohman
 Ms. Wendy M. Stone
 Mrs. Suzanne Stork
 Mrs. Anne Story
 Ms. Susan J. Strawn-Holloway
 Miss Kay Strickland
 Mr. Michael W. Strickland
 Reverend Jonathan E. Strother
 CW3 James F. Stroud, USA (Ret.)
 Mrs. Maria G. Suarez
 CWO3 Alexander Eugene Sullivan, USN
 Mr. John Sullivan
 Mrs. Naomi R. Sullivan
 Mr. Danny Summerlin
 Mrs. Malinda Harrington Summey
 Mrs. Carla Jo Supples
 Ms. Carole A. Sutton
 Mrs. Mary Lynn Sutton
 Dr. Alan Ples Swartz
 Mr. Conrad D. Swick
 Mr. and Mrs. Kenneth H. Sykes, Jr.
 Mr. Michael B. Szafanski
 Tallywood Shopping Center
 Ms. Pat Talty
 Mrs. Norma Q. Tanner
 Mr. Elvin T. Tatum
 Reverend and Mrs. Bruce D. Taylor
 Mr. and Mrs. Donald R. Taylor
 Mr. and Mrs. Sam Taylor



**Lynn Moore Carraway '71
President
Methodist College Alumni
Association**

Dear Alumni:

This letter is history in the making!

From this point on, you will receive an annual report from your President each year in the March issue of this publication. This is a result of extensive by-laws revisions (they had become severely outdated) approved in July 1996 by your Board of Directors.

A second revision included term limits for Board of Directors' seats. This was done with the idea of getting more alumni involved. The limit has been set at two successive terms (six years). At that point, the alumnus/a must rotate off for at least one year. Other revisions involved clarifying responsibilities of the Board. It's a great improvement and will help us do a good job for you.

Homecoming, as usual, was a lot of fun. "Let Us Entertain You" was an appropriate theme because the Holiday Inn was packed with students and alumni as *The Entertainers* played favorites, both old and new (yes, including the Macarena)! Approximately one hundred attended the Annual Alumni Dinner where Association awards were presented to Janet Mullen '72 (Alumni Service Award), Barry Horne '71 (Distinguished Alumnus) and Joy Cogswell (Outstanding Faculty).

Nearly every reunion class was represented. If you missed it, you missed a great time. Try to make it next year. Put it on your calendar NOW. The date is November 1. The theme is: "Follow the Yellow Brick Road to Methodist College" with *The Band of Oz!*

In 1996, Methodist College passed another milestone: forty years since it was chartered in 1956. To celebrate, the alumni, students, and administration combined their talents to present a light-hearted, nostalgic look at the first forty years. Attendees, which included trustees, local dignitaries, students and faculty, enjoyed a one-hour show complete with slides, narration and live entertainment featuring music from each decade. Colorful "Celebrate 40" banners lined the main streets of the campus. The event was video-taped. You may purchase a copy for \$15.00 from the Alumni Office. Profits will be held by the Alumni Association.

Participation by alumni in the Annual Fund continues to rise and with it, our influence. More alumni participated in 1996 than ever before. Don't miss President Hendricks' letter for an update on the Capital Campaign. Construction on the new Math and Computer Science Building is almost complete.

If you have not visited Methodist College lately, make plans to. You will be amazed at the progress we have made.

Thanks for your continued support.

Lynn Moore Carraway

Lynn Moore Carraway '71
President
Methodist College Alumni Association

1996 Annual Report

Reverend John L. Taylor, Jr.
Mr. and Mrs. Thomas T. Teeters
Telephone Answering Service
Col. Cader C. Terrell, USA (Ret.)
Ms. Pamela G. Thibodeau
Mr. and Mrs. Chase S. Thomas
Mr. Earnest Thomas
Mr. Leighton A. Thomas
Ms. Stephanie M. Thomas
Mrs. Connie Thompson
Mr. Robert M. Thompson
Mrs. Gale Fields Thompson
Mr. and Mrs. Frederick R. Thorne
Mr. Edward Tindell
Mr. Samuel Tolar
Mr. and Mrs. Tom Trotter
Ms. Katharine A. Tucci
Tucker Real Estate, Inc.
Ms. Margaret B. Tunstall
Mr. and Mrs. Robert L. Turner
Mr. and Mrs. Roy Turner
Mr. Walter R. Turner
Mr. and Mrs. Joseph P. Ulatowski
Ms. Anne E. Uleman
Mr. and Mrs. Lewis Upchurch
Mr. and Mrs. Mark T. Uselman
Mr. Chuck Uzzell
SSGT Michael K. Vaden, USA (Ret.)
Mr. and Mrs. Stanley A. Vandervort
Ms. Deidra L. Vandervort
Mr. Edgerton M. Vaughan
Mr. Richard W. Vaughan
Mr. James D. Vencill
Mrs. M. Elizabeth Ver Vaecke
Mr. R. Michael Voss
Mrs. Paige Walker
Ms. Gail Walker
Mr. Mark Walker
Mr. and Mrs. Robert M. Walker, Jr.
Mr. Stephen F. Walker
Mr. Douglass W. Wallace
Ms. Margery P. Wallace
Mr. and Mrs. Alonzo Walston
Mr. John L. Walston
Mr. and Mrs. G. Eddie Waren
Mrs. Jane Warfel
Mr. and Mrs. Robert G. Warner
Mr. and Mrs. Ronald J. Warnken
Mrs. Ethel Grey Warren
Mr. and Mrs. Percy A. Warren
Mr. and Mrs. William G. Warren
Mr. William C. Warren, Jr.
Mr. Eddie J. Washington
Mr. Kevin S. Waters
Mr. John D. Watkins, Jr.
Mr. Lance J. Watkins
Ms. Leigh Watkins
Mr. Jack A. Watson
Weaver Commercial Properties
Weaver Development Company
Mr. and Mrs. Patrick J. Welk
Mr. Benjamin E. Wells
Mrs. Carole M. Wells
Reverend and Mrs. Woodrow Wells, Jr.
Mr. Daniel T. Wemyss, Jr.
Mrs. Charlene A. Westergaard
Mr. Robert D. Wham, Jr.
Mr. and Mrs. Perry A. Whited
Mr. and Mrs. Charles R. Whitley
Mrs. Joanne S. Whitley
Mr. James N. Whitt
Mrs. Billie P. Widman
Wiener Works of Cumberland County
Mrs. Donna Wiggs
Mr. and Mrs. John S. Wilda
Mr. Augusta Williams
Mr. Daniel H. Williams, Jr.
Mrs. Gerri Williams
Mrs. Pamela Williams

Mr. and Mrs. Robert S. Williams
Mr. and Mrs. Thomas W. Williams, Jr.
Ms. Janet Wilson
Ms. Linda Wilson
Dr. Paul F. Wilson
Reverend Herman S. Winberry
The Reverend Brian W. Wingo
Mr. and Mrs. Keith B. Winter
Mr. Richard J. Wittmann
Mr. Paul J. Wojcik
Dr. Samuel Womack
Mrs. Deborah D. Wood
Ms. Elisabeth Wood
Mr. Ernest W. Woodcock
Mr. William B. Woods
Mrs. Kathleen O. Woolrich
Mr. Mack V. Worley, Jr.
Mr. Livius F. Worrell, Jr.
Mr. and Mrs. Robert Wright
Brig. General Norman Youngblood
Mrs. Rome Zahran

Alumni Class Of 1964

17.91% \$8,597.50
Mrs. Betty G. Bunce
Mrs. Patricia Melvin Cashion
Mr. George F. Dempsey
Reverend Jack M. Hunter
Reverend James W. Johnson
Mrs. Virginia K. Kern
Mrs. Harriett Smith McDonald
Mrs. Betty Neill Guy Parsons
Mr. Thurman L. Smith
Mr. Louis Spilman, Jr.
Dr. Harold J. Teague
Mr. Jerry C. Wood, Sr.

Class Of 1965

21.98% \$6,553.33
Mr. W. Glenn Bell
Reverend Nancy Ruth Best
Mr. A. Paul Brill, III
CDR George S. Council, USN(Ret.)
Mrs. Mary Lynn McBryde Fraser
Mr. Edmund L. Grady, Jr.
Mr. Larry Green
Mrs. Willisteen D. Hall
Mr. B. Allen Hayes
Mr. Jerry A. Keen
Mr. C. DeWitt Lancaster, Jr.
Mr. Phillip A. Levine
Mr. Jerrold A. Marcus
Mr. Loche A. McLean
Mrs. Doris D. Rulnick
Mrs. Mary Ann Duncan Sharpe
Mrs. Suzanne Rouse Stork
Mr. Walter R. Turner
Ms. Cynthia A. Walker
Mrs. Frances Abell Zeigler

Class Of 1966

19.23% \$3,770.00
Mr. L. Curtis Barnes
Mr. David A. Bass
Mrs. Barbara Hauser Bryan-Jones
Mr. G. Gordon Dixon
Mr. Murray O. Duggins
The Reverend Henry Boone Grant, Jr.
Mr. Robert W. Griffin
Major General John W. Handy, USAF
Mr. Roger B. Hobgood
Mr. Jack Ray Honeycutt
Mrs. Carolyn Thompson Horsley
Mrs. Gail Harrison Joyner
Major General James M. Link, USA

Mr. William M. Martier, II
Mr. Romulus A. Mason
Mr. L. Richard Meissner, Jr.
Mrs. Marie Zahran Reale
Mr. Robert B. Reaves
Mrs. Ella Rose Hall Smith
Dr. Thomas S. Yow, III

Class Of 1967

22.66% \$7,307.50
Ms. Margaret S. Alexander
Mr. John T. Baranowski
Mr. Willie E. Bethune, Jr.
Mr. James A. Bledsoe
Mr. Charles W. Davis, III
Mr. James Lee Dodrill
Mrs. Patricia Zahran Evans
Mrs. Virginia Dove Frye
Mrs. Joan Hobbs Gray
Mrs. Celia Abernethy Griffin
Mrs. Diane Reid Gross
Mr. C. Carson Harmon
Mrs. Beverly Parks Honeycutt
Mrs. Ann L. Loyd
Mr. Cabell Luck, Jr.
Mr. Dale W. Marshall, Jr.
Mr. Thomas H. Matthews
Mr. Leslie J. Mengel
Mr. Elmer R. Midgett, Jr.
Mrs. Mary Dark Osborne
Mrs. Mary Segesky Saunders
Mr. Michael B. Saunders
Mrs. Carolyn Nunery Sellers
Mrs. Judith Bruton Sharpe
Mrs. Patricia Hardee Smith
Mrs. E. Ann McKnight Sutton
Mr. Robert M. Thompson
Mr. Daniel T. Wemyss, Jr.
Mr. James Morris Zeigler

Class Of 1968

23.73% \$22,171.11
Mrs. Barbara Meier Baranowski
Mr. Randall H. Barnes
Mr. Malvern S. Barrow, III
Mr. E. Wayne Beard
Mr. William H. Billings
Mrs. Kathy Richardson Borrelli
Mr. Dennis L. Bruce
Mrs. Catherine Bryant
Ms. Charlotte Carmine
Mrs. Sandra Thomas Carter
Mrs. Patricia Bracewell Clayton
Mr. Terry F. Daniels
Mr. G. Leslie French
Dr. J. Kenneth Garrett
Mrs. Pam Zollers Garrett
Mr. L. James Gosier, Jr.
Mr. Gordon B. Herbert
Mr. Stephen W. Hopkins
Mr. J. Stewart Humphrey
Reverend James R. Lancaster, Jr.
Ms. Rosemary J. Lands
Mrs. Barbara Simmons Lawson
Mr. John B. Lipscomb, Jr.
Mr. Walter Vick
Mrs. Brenda Rosser Lyons
Mr. F. Milo McBryde
Mr. W. Terry McPherson
Ms. Marion Parham
Mr. F. Patterson Quantz
Mrs. Linda Dept Schafer
Mrs. Donna Davis Smith
Ms. Carole A. Sutton
Mr. David K. Taylor, Jr.
Mr. R. Wayne Trousedale
Mrs. Ethel Grey Warren
Dr. James K. Weeks

Mrs. Charlene VanDerwater Westergaard
Mr. Daniel H. Williams, Jr.
Mrs. Gerri Norman Williams
Mr. Ernest W. Woodcock
Mr. Mack V. Worley, Jr.
Mrs. Mary Fernanides Wright

Class Of 1969

22.43% \$5,867.41
Mr. David B. Alabaster
Mr. Wylie J. Baker, Jr.
Mrs. Carolyn Marks Baldwin
Mr. Robert G. Barker
Mrs. Anna Pilon Baxley
Mr. Thomas M. Bell
Mr. William W. Blalock, Jr.
Mrs. Appie Walston Bolton
Mrs. Linda Sue Bruton Bourland
Mrs. Brenda Teal Bullard
Ms. Paula May Caddell
Mr. Curtis A. Cash
Mr. John F. Chilton, III
Mrs. Elizabeth Yoder Chismark
Mr. Samuel H. Compton, Jr.
Mr. Richard Lee Dean
Mr. A. G. Mason Dirrickson
Mrs. Marietta Moore Dixon
Mr. Edward L. Dunn
Mrs. Jackie Jeffreys Estes
Mr. William P. Estes
Mrs. Susan Keeth Fertel
Mrs. Teena Thigpen Fraser
Mr. James P. Groseclose
Mrs. Jill Larue Groseclose
Mrs. Judy Conard Gum
Mrs. Dianne Lowdermilk Harvey
Mrs. Marcia Faye Hasie-Daniels
Mrs. Belinda Rouse Hawley
Mr. Henry Heath, Jr.
Mrs. Zula McPhoul High
Ms. Linda Holleman
Mr. Robert Bruce Jervis
Mr. Robert A. Jones, Jr.
Mr. John A. Jordan, III
Mr. Barry M. Lea
Mr. Rick Lindner
Mr. James F. Loschiavo
Mr. David K. Marshall
Mrs. Mary Etta Brooks McFadyen
Mr. Herbert L. Mitchell, III
Mrs. Gay Davis Moser
Mrs. Joanna Cherry Palumbo
Mr. William Parker
Mrs. Janice Marcy Rhue
Mrs. Sharon Slade Sanders
Mr. Thomas A. Sanders
Mr. James E. Simmons, IV
Mrs. Diana Doucet Sims
Mr. Raymond H. Smith, Jr.
Mr. Frederick M. Stanton, Jr.
Mrs. Sandra Johnson Stolzer
Mr. L. Thomas Swink
Reverend John L. Taylor, Jr.
Mr. Connie Underwood Thompson
Mr. Richard W. Vieth
Reverend Woodrow Wells, Jr.
Ms. Sandra A. Wheeler
Ms. Janet Wilson

Class Of 1970

20.58% \$14,630.95
Mrs. Terrianna Walton Alexander
Mr. James David Andrews
Mrs. Ann DuVal Blalock
Mrs. Olivia Godwin Bradley
Mr. Wade E. Byrd
Mrs. Amelia Leimone Caison
Mrs. Sandra Matthews Carter



The groundbreaking for the new Math and Computer Science Building took place in October. It will open this summer.

Dr. John C. Clamp
 Mrs. Beverly Cahoon Cleverley
 Mrs. Helen Emily Crowley
 Mrs. Leanah White Culbreth
 Mr. Robert L. Davis
 Mrs. Patricia Griggs DeNeal
 Mr. Frank F. Dixon
 Mrs. Barbara Blow Dozier
 Mr. W. Franklin Faulkner
 Mr. Herbert R. Finger, Jr.
 Mr. Carl D. Ford, Jr.
 Mrs. Karen Milner Freeman
 Mrs. Ann Yount Hampton
 Mr. Charles S. Hester
 Mrs. Terrie L. Kelemecz
 Mrs. Carolyn Garrison Kneas
 Mr. William M. Lineberger
 Mrs. Linda Burns Lingerfeldt
 Mrs. Deborah C. Manning
 Mr. Jerry McCown
 Mr. Paul A. McKee, Jr.
 Dr. Linda Carol McPhail
 Mr. Rick Merrill
 Mr. Thomas F. Miriello
 Mrs. Scheherazade Stoeckley Nobles
 Mr. Eugene S. Odum
 Mrs. Marianne Snowden Odum
 Mr. Ned Olinger
 Mrs. Leta Smith Olson
 Mrs. Caroline Norman Pearce
 Mr. William W. Pearce
 Mr. James D. Poole, Jr.
 Mrs. Ann Darden Pope
 Mrs. Laura Byrd Rambeaut
 Mrs. Janet Moyer Raskin
 Mr. Larry G. Reavis

CDR Sue James Smith
 Mrs. Norma Quick Tanner
 Mr. Elvin T. Tatum
 Mrs. Gale Fields Thompson
 Mrs. Elizabeth Baldwin Ver Vaecke
 Mrs. Carole McKnight Wells
 Mr. Harvey T. Wright, II

Class Of 1971

18.57%

\$6,242.50

Mr. Michael J. Alloway
 Mr. John W. Brown
 Mr. John W. Butler
 Mrs. Lynn Moore Carraway
 Mrs. Julia Dixon Chandler
 Mr. Paul R. D'Alpe
 Mr. Graham Dozier
 Mrs. Ada Andrews Evans
 Ms. Susan C. French
 Mrs. Wanda Taylor Gregory
 Mr. O. Alex Hager, II
 Mrs. Mary John Hall
 Mr. Ambrose P. Hill
 Mrs. Deborah Pender Hill
 Mrs. Sallie King Hollis
 Mr. Barry Horne
 Mr. John T. Hughes, Jr.
 Mrs. Kathrynne Holland Jeffreys
 Ms. Elva L. Jess
 Mrs. Laura Edwards Johnson
 Mr. Robert W. Johnson
 Dr. Thomas H. Jones
 Reverend W. Verdery Kerr
 Mr. Frederic John Koch
 Mr. John W. Korbach, III
 Mrs. Sandra L. Lineberger

Mrs. Margaret A. Martin
 Mr. Joe Thomas Matthews
 Mrs. Lynn Evans Midgett
 Mr. Gregory E. Miller
 Ms. Myra R. Parker
 Ms. Mary Helen Pearsall
 Mr. Albert R. Pierce
 Reverend Dr. William M. Presnell
 Mr. John G. Roberts
 Mrs. Peggy Hales Scott
 Mrs. Mary Alice Leimone Southerland
 Mrs. Cynthia King Speed
 Mr. James Louis Speed
 Mr. Bruce Edward Stevens
 Mrs. Linda Chrrix Stevens
 The Honorable Leonard W. Thagard
 Mr. Ronald A. Thompson
 Mrs. Rome Zahran

Class Of 1972

15.90%

\$4,581.47

Mr. Samuel Q. Atchley
 Mrs. Debbie Bright Beavers
 Ms. Rina M. Bishop
 Mr. Charles W. Broadfoot, III
 Mr. John F. Campbell
 Mrs. Lynn Gruber Clark
 Mr. Ronald K. Coleman
 Mr. William J. Costin, Jr.
 Mr. Christopher G. Drew
 Mr. Shikery A. Fadel
 Mr. E. Wilson Fisher, Jr.
 Mr. W. Robert Frazier, III
 Mrs. Sue Brooks Giles
 Reverend Ray T. Gooch
 Mrs. Gail Outlaw Graham

Mrs. Charlotte Bridge Hardison
 Mrs. Sylvia Grainger Harrelson
 Mr. Judith Harrison
 Mr. Charles V. Hartsell, Jr.
 Mrs. Lucy Allgood Hieronymus
 Mr. Clyde F. Hurst, III
 Mr. Robert M. Jeffreys
 Mrs. Laura Heinz Kamionka
 Mrs. Gayle Rogers Kent
 Mr. William T. Landis, III
 Mr. Greg Liss
 Mrs. Jane Moore Liss
 Mrs. Lena Johnson Massengill
 Mr. Bobby C. McAlpin
 Mr. Ronald N. McCullen
 Mrs. Rainelle Dixon Mishoe
 Mrs. Janet Conard Mullen
 Major Sarah Brady Satterfield, USA (Ret.)
 Ms. Ann R. Simoneau
 Mrs. Sue Hatch Smith
 Mr. W. Thomas Smith
 Mr. Richard W. Vaughan
 Mrs. Billie Pomeroy Widman
 Mr. Livius F. Worrell, Jr.

Class Of 1973

17.31%

\$3,512.50

Mrs. Kaye Corbin Bledsoe
 Mr. Harry L. Britt, Jr.
 Mrs. Jo Anna Walker Brown
 Mr. W. Christopher Bryan
 Mr. John A. Butler
 Mr. Johnny Clyde Byrd
 Mr. Edwin R. Castle, II
 Mrs. Peggy Bland Chason
 Mr. Pete M. Chason

1996 Annual Report

Mr. Clayton A. Cosner
 Mrs. Bonnie Herring Crabtree
 Mr. Jimmy R. Elledge
 Mr. Steve Floyd
 Mrs. Rita J. Foley
 Mr. James Burke Garriss
 Mrs. Nancy Garriss
 Mr. Joseph T. George, Jr.
 Ms. Penny C. George
 Mr. Gerald F. Gouge
 Ms. M. Janet Graham
 Mrs. Winifred McBryde Grannis
 Mr. Jesse P. Gray
 Mr. Billy Harrington
 Mr. J. C. Harris, III
 Mr. Reid A. Horne
 Mrs. Laurie Alston Jennings
 Mr. Vaughn L. John
 Mrs. Anita Fisher King
 Mrs. Susan Russell Lacy
 Mr. Evan H. Lacy, III
 Mrs. Dorothy Jane Delaney Landis
 Mr. Frank K. Layton, Jr.
 Mr. Gary F. Lewis
 Mr. Chester S. Makowski
 Mr. Ray Manning
 Mr. Tom Manning
 Mr. Ralph P. Melvin
 Mr. Ralph H. Miller
 Mr. Jeffrey A. Olson
 Dr. Robert F. Pelham
 Mrs. Daryl Oglesby Poulk
 CSM George D. Roraback Jr., USA (Ret.)
 Mr. A. Robert Searle
 Mr. Harold Glenn Slaughter
 Ms. Susan J. Strawn-Holloway

Class Of 1974

13.60% \$2,242.50
 Mr. P. Nolan Becker
 Mr. Barry Arnold Box
 Mrs. Marion Hawkins Bryant
 Mrs. Susan Kastner Castle
 Dr. Samuel J. Clark, III
 Mrs. Marilyn Blodgett Cline
 Dr. Gary B. Copeland
 Mrs. Linda Allvord Damminger
 Mr. Russell E. Davenport, Jr.
 Mrs. Carolyn Harrison Dawson
 Mr. Timothy A. Dennis
 Mr. Danny R. Fowler
 Dr. William C. Harrison
 Col. Clark W. Hastings, USA (Ret.)
 Mr. Glen M. Hinnant
 Mrs. Belinda Branch Howard
 Mr. Elmer C. Hubbard
 Mrs. Myra Stowe Jackson
 Mr. J. Allen MacDonald
 Mr. Alfred E. Marlowe
 Mr. Brent A. Matthews
 Mrs. Margaret Cottingham Moody
 Mr. Robert A. Peele
 Mrs. Mary Spilman Poole
 Mrs. Bonnie Hall Rivera
 Col. Marion D. Robertson, Jr.
 The Reverend James C. Rowlette
 Mrs. Mary Jane Gosier Rowlette
 Mrs. Karla Jordan Smith
 Mr. Kenneth H. Sykes, Jr.
 Reverend Kenneth S. Valentine
 Mr. Edgerton M. Vaughan
 The Reverend Randy L. Wall
 Ms. Marian W. Williams

Class Of 1975

14.55% \$1,628.65
 Mr. D. Michael Arp
 Mrs. Lynn Sloan Barnes

Mr. Wayne E. Barnes
 Mrs. Lynda Buie Baum
 Mr. William T. Bell
 Mr. Samuel H. Brick, III
 Mr. Harvey L. Burns
 Mr. Turner F. Caldwell, III
 Mrs. Sarah Edge Cessna
 Mr. Ronald L. Coats
 Mrs. Harriet Cobb
 Major Robert R. Cobb
 Mrs. Kay Stewart Demyan
 Mrs. Marsha Gooden Faucette
 Mr. C. John Gissell
 Mr. Jeffrey H. Haskett
 Mrs. Patricia Lewis Hinnant
 Mr. Alton E. Mabb, Jr.
 Mr. Stuart E. MacIntyre
 Dr. Mary Anne Martin
 Mrs. Betty L. Milligan
 Mrs. Cheryl C. Mitchell
 Mr. Patrick M. O'Briant
 Mr. Steven P. Quigley
 Mr. Rafael C. Rivera
 Mr. Wayne M. Robinson
 Ms. Judith L. Sheldon
 Mrs. Jean S. Snively
 Mrs. Malinda Harrington Summey
 Mr. J. Lee Warren, Jr.
 Mrs. Deborah Dixon Wood

Class Of 1976

13.38% \$1,510.00
 Mr. Levie C. Cameron
 Mr. G. Thomas Dent
 Ms. Mildred Dexter-Rosell
 Mrs. Patricia Poulk Driggers
 Mr. Stephen Driggers
 Mr. David L. Foster
 Mr. Alfred S. Hare
 Mrs. Joan Brosch John
 Mrs. Patricia Horne Lancaster
 Rev. J. Richard McDowell
 Mr. Larry S. McMillin
 Mrs. Gail Vaughan Miller
 Ms. Debra E. Neill
 Mrs. Brenda Hester Peregoy
 Mr. James M. Peterson
 Mrs. Tonie Minges Peterson
 Mrs. Sue Poorman Richards
 Mr. R. Eugene Rickmond
 Mrs. Denise Sykes
 Mr. Robert D. Wham, Jr.

Class Of 1977

9.39% \$1,125.00
 Mr. Herman L. Adams, Jr.
 Mrs. Debra Underwood Byrum
 Mrs. Betty Jo Mitchell Dent
 Mr. Michael W. Gillmer
 Mr. John Alwin Graham, Jr.
 Ms. Iris Stewart Hollis
 Mrs. Yvonne Walker McDowell
 Mrs. Mary Jane Miller
 Mrs. Donna Hobbs Mims
 Mr. Larry W. Parsons
 Mrs. Virginia M. Pierce
 Ms. Kathy D. Reynolds
 Mrs. Colleen Warner Smith
 Mr. Michael E. Stanfield
 Mr. Samuel Tolar
 Mr. R. Michael Voss
 Mr. Eddie J. Washington

Class Of 1978

13.33% \$995.00
 Ms. Paula L. Adams
 Mr. Carl C. Birk

Dr. Joseph Brum, Jr.
 Mr. Aubrey W. Carter
 Mrs. Sara Young Chester
 Mrs. Marie Beane Conner
 Mr. Jeffrey D. Glendening
 Mrs. Sue McLeod Glendening
 Reverend Claudia Gail Harrelson
 Mr. B. Franklin McLeod
 Mr. Glen E. Meade, Jr.
 Reverend Benjamin Ray Melvin
 Mrs. Margaret Farrior Pope
 Mr. Thomas A. Pope, Jr.
 Mrs. Sylvia Vessels Price
 Mr. David L. Radford
 Ms. Blair Robertson
 Dr. Alan Ples Swartz

Class Of 1979

7.02% \$312.50
 Mrs. Teresa Poole Akamatsu
 Mr. William B. Crompton, III
 Reverend William E. Cummings
 Mrs. Rosemarie Brantley Cunningham
 Mrs. Rhonda Gore Etherden
 Mrs. Melissa Williams Johnson
 Mrs. Cynthia Moore Jones
 Mr. Ernest W. Parker
 Mr. Andrew F. Pasternak
 Mr. Charles Wayne Stewart
 Mrs. Mary Lynn Sutton
 Mr. Stephen F. Walker

Class Of 1980

10.05% \$1,350.00
 Ms. Ruth Gilmore Ambrose
 Mrs. Susan Moore Baty
 Mrs. Towanna O'Neal Bigford
 Mr. Dwight E. Cribb
 Mrs. Karen Jones Ehle
 Mrs. Victoria Saunders Etheridge
 Mr. James R. Ketchem
 Mrs. Karen Didolci Ketchem
 Mrs. Bonnie Rexon Lindsley
 Mr. Rickey L. Lindsley
 Reverend J. Tal Madison, Jr.
 Mr. H. Oscar Queen, III
 Ms. Diana L. Reichelderfer
 Mrs. Cynthia Barr Selvidge
 Reverend Jonathan E. Strother
 Mrs. Ruby Strouse
 Mr. James J. Townsend
 Mr. Kevin S. Waters
 Mrs. Sherry Hudson Wilkins

Class Of 1981

8.07% \$632.50
 Mrs. Jeanette Batchelor Anderson
 Ms. Sylvia C. Arvizu
 LTC M. Wilkey Blackwell, USA (Ret.)
 Ms. Karen C. Boone
 Ms. Ethel L. Burns
 Ms. Nancy Grey Calvert
 Dr. Ann G. Eglund
 Mrs. Susan Yost Jaeger
 Mr. William G. Morgan, Jr.
 Reverend Adolph C. Smith
 Mrs. Kathy Southerland Stewart
 Mr. Michael W. Strickland
 Mrs. Carla McLamb Supples

Class Of 1982

7.74% \$955.00
 Mrs. Tammy Hightower Edens
 Reverend Phillip R. Glick
 Mrs. Patsy J. Gordon
 Mrs. Linda M. Gravitt

Mrs. Margaret Cornelius Haigh
 Mr. Mamoru Kubota
 Mrs. Julie Ragan Madison
 Mrs. Patricia Chenet Marples
 Mrs. Michele Y. Mazique-Donadio
 Mr. Phillip L. McAllister
 Mrs. A. Regina Davis Myers
 Mrs. Anne Barbee Story

Class Of 1983

12.24% \$870.00
 Mr. W. Bradley Carter
 Ms. Georgianna Collins
 Mrs. Angela Gentry Dunkley
 Ms. Mary Elizabeth Earp
 Mr. Robert L. Harmon
 Mr. Michael Kohn
 Mrs. Jeanene Jenrette Lee
 Ms. Phyllis J. Long
 Mrs. Elaine Forbes Marshall
 Ms. Paula K. McGrann
 Mrs. Barbara Garza Miller
 Mr. Terry A. Mitchell
 Mrs. Debra Pollock Myers
 Mrs. Carla Jo Raineri-Maldonado
 Mr. William J. Saunders
 Mr. K. Owen Spears, Jr.
 Mr. Michael B. Szafanski
 The Reverend Brian W. Wingo

Class Of 1984

12.26% \$1,155.00
 Mrs. Linda Anderson Archer
 Mr. Bruce D. Bright
 Mrs. Fabienne Lockwood Butler
 Mr. Robert W. Godwin
 Mr. Michael W. Gonella, Sr.
 Mr. Roger W. Grider, Jr.
 Mr. Danny F. Hagans
 Mrs. Michele Kildow
 Mrs. Lynn Morton Kubota
 CW2 Robert L. Larsen, USA
 Ms. Helen M. Matthews
 Mrs. Terri Hawley Maynard
 Mr. Neil McNeill
 Miss Helen Marie Pilkay
 Ms. Jeanne Maureen Reed
 Mrs. Patricia Smith Schob
 Mr. Michael Sokalski
 Mr. Conrad D. Swick
 Ms. Shelia D. Yates

Class Of 1985

10.00% \$1,016.14
 Mr. Robert B. Boswell, Jr.
 Mrs. Terri Moore Brown
 Mrs. Mary Lynn Ragan Clunn
 Reverend Steven C. Clunn
 Mrs. Rena L. Elliott
 Ms. Dorothy Hubbard
 Mr. Gregg Martin
 Mrs. Theresia Howland Mask
 Mrs. Claudia Hawthorne May
 Mr. Frederick J. Miller, Jr.
 Mr. D. Scott Morgan, Sr.
 Mr. Roger D. Pait
 Mr. Herbert A. Schroer, Jr.
 Ms. Lisa A. Sessoms
 Mr. George A. Small

Class Of 1986

11.41% \$1,030.00
 Miss Anna Beth Bass
 Ms. A. Christine Bolyard
 Mrs. Donna M. Bullard
 Ms. Eritza M. Centeno

Ms. Grace Alvina M. Haney
 Mrs. Sandra McDaniel Ivarsson
 Ms. Suzan Iwerks
 Laura G. Kafka, Ph.D.
 Mrs. Jody Hoepner Kelley
 Mr. Keith A. Kildow
 Mrs. Jean Bunn Lemke
 Mr. Alan Thomas Mabry
 Mr. Charles C. Morris
 Mr. Craig A. Morris
 Mrs. Lila McLean Nicholson
 Mrs. Carmen S. Pomeroy
 Ms. Paula Marie Schloer
 Mrs. Lynne Dawkins Smith
 Mrs. Sandra L. Smith
 Mr. Barry I. Souders
 Mr. Ronald W. Tart

Class Of 1987

6.47% \$557.50

Mrs. Sandra Lee Aman
 Mr. Donald R. Canady, Jr.
 Ms. Esther B. Christian
 Mrs. Ruth Rushton Crumley
 Mr. Harold D. Downing, Jr.
 Mr. Bradley K. Duenweg
 Mrs. Felicia Davis Evans
 Mr. William F. Knowlton, II
 Mr. Ronald F. Matysek, Jr.
 Mrs. Nicole Crawley McKinney
 Mrs. Robin Swanson Register
 Mr. Forrest C. Shaw, III
 Mrs. Susan K. Smith



Members of Methodist College's Fellowship of Christian Athletes gather at Ridgecrest in the North Carolina mountains for the annual FCA Convention.

Class Of 1988

10.84% \$822.50

Mr. Scott W. Armentrout
 Mrs. Alice Patterson Armentrout
 Mr. Richard A. Butler, Jr.
 Capt. Gregory S. Creech
 Mrs. Dedra Tart Culbreth
 Mr. Robert G. Dees, Jr.
 Mr. Jansen Daryl Evans
 Mrs. Nona D. Fisher
 Mr. Roy J. Haddock
 Mrs. Valerie Gee Hagans
 1SG Thomas S. Hatfield, USA (Ret.)
 Mr. William F. Little, III
 Mr. Larry L. Martens
 Mrs. Lori Silvasy Stephenson
 Mrs. Paige Thorne Walker
 Mr. William C. Warren, Jr.
 Mrs. Joanne S. Whitley
 Mrs. Kathleen Voss Woolrich

Class Of 1989

10.98% \$1,432.78

Reverend Gary E. Allred
 Mrs. Dawn F. Ausborn
 Ms. Angela J. Benjamin
 Ms. Joy A. Bonhurst
 Mr. Gregg C. Coleman
 Ms. Emma J. Covin
 Mr. Jon D. Dalton
 Mr. T. John Dexter, Jr.
 Mrs. Jill Starke Gallen
 Capt. Howard E. Gray, (Ret.)
 Mr. Trent A. Gregory
 Mr. Bobby Hill
 Ms. Janice E. Humphreys
 Mr. Richard L. Johnson
 Mr. Donald H. Laney
 Mr. David R. Lindsey
 MSGT Matthew E. Linn, USA (Ret.)
 Mr. David F. Lockhart
 Mrs. Kathy D. McPhail
 Mrs. Kathryn Small Offenhauser

Every effort has been made to ensure that this report is complete and correct. If we have omitted a name or misspelled one, please contact the Methodist College Institutional Advancement Office

Mr. Ronald K. Phipps
 Mr. Terry D. Preiss
 Mr. Joseph E. Quinn, Jr.
 Mrs. Sheri Weeks Rogers
 Mrs. Lydia B. Smith
 CW3 James F. Stroud, USA (Ret.)

Class Of 1990

9.06% \$2,727.50

Ms. Carol Patricia Andre
 Ms. Elizabeth Ann Brantley
 Mr. Richard C. Briggs, Jr.
 Ms. Janet K. Buffaloe
 Mr. Michael James Carpenter
 Mrs. Janet Copeland Carter
 Mr. Ron Foster
 Mr. Paul D. Grove
 Mr. Ernest Wayne Hall
 Mrs. Stephanie D. Johnson
 Reverend Linda K. Karalfa
 Mr. Loran E. Leck
 Ms. Belinda A. Lellock
 Ms. Ann Frances Marenick
 Mr. Carmon A. Maxwell
 Mr. Edward A. Perry

Mr. Francis R. Pineiro
 Mr. Francis Piri
 Mrs. Susan Cox Ryan
 Mr. Robert L. Sinodis
 Mrs. Susan Osborne Stauffer
 Mrs. Gail B. Winter
 Mr. Doug E. Wolfgang, Jr.

Class Of 1991

12.08% \$12,691.17

Mr. Joseph A. Castner
 Mr. Terry David Cathey
 Mr. Jason R. Cherry
 Mr. Brian K. Cole
 Mrs. Christy Clayton Cole
 Mr. Ronald D. Cooke
 Mrs. Sylvia Brown Davis
 Mr. Brian D. Dougherty
 Mrs. Jane Jordal Folkerts
 Mrs. Rhonda Smith Hall
 Mr. Robert D. Hamilton, Sr.
 Mr. Timothy A. Helms
 Ms. Irmgard Kolmorgen Hoy
 Mr. Douglas C. Johnson
 Mrs. Kathy Roberts Johnson

Mr. Kevin C. Kriews
 Mrs. Karen Ann Lewis
 Mrs. Robin M. Mauck
 Ms. Michelle D. Mitchell
 Mr. Steven P. Mitchell
 Estate of Joan Meade Pait
 Mr. Todd L. Peterson
 Mr. Lee Roy Pittard, III
 Ms. Nancy J. Ramsey
 Ms. Krista L. Riley
 Ms. Kelli K. Sapp
 CW03 Alexander Eugene Sullivan, USA
 Mr. Leighton A. Thomas
 Ms. Stephanie M. Thomas
 Ms. Anne J. Thorpe
 Mr. Herman P. Williams
 Mr. Keith B. Winter

Class Of 1992

9.36% \$1,834.22

Ms. Judith M. Blake
 Mrs. Cindee Hurt Campbell
 Mrs. Dawn Thompson Carter
 Mr. Brian D. Cuppett
 Ms. Denise L. Darby-Hysell

1996 Annual Report

Mr. Robert C. Foreman
Mrs. Jamie Jean Forsee
Mr. Patrick F. Gibney, Jr.
Mr. Barnett H. Hill
Mr. Mark L. Lange
Mr. W. Chuck Levorse
Mr. George Wallace Locke
Mr. Terry D. Lydick
Mr. Bryan W. May
Mr. Joseph K. McKoy
Mrs. Antionette B. Monroe
Mrs. Melissa Mearns Ohlmacher
Mrs. Carol Bradshaw Peterson
Mr. Robert J. Pilewski
Mr. Thomas E. Rittenhouse
Mr. Craig J. Sandstrum
Ms. Lorie M. Sanuita
Mr. Robert G. Scott
SSGT Michael K. Vaden, USA (Ret.)
Mr. Lance J. Watkins

Class Of 1993

14.41% \$1,364.16

Mr. W. Joe Adams
Mr. Jeffrey D. Alton
Mrs. Angela Garner Buchholz
Mr. Thomas E. Burney, Jr.
Mr. Michael A. Ciani
Mr. Brett W. Coleman
Mrs. Cathy Clayton Cook
Mr. Richard S. Cutler, Jr.
Ms. Abigail R. Findlay
Mr. David L. Herring
Mr. Harry W. Hoffman, III
Mr. Barry L. Jones
Ms. Caroline F. Kearns
Mrs. Joy Godwin Kirkpatrick
Ms. Jo Ann Elizabeth Kopp
Mrs. Misty Kaye Looney
Ms. Amy Jo B. Lucas
Ms. Tracy L. Maness
Mr. David E. Maxwell, Jr.
Mr. Thomas C. Maze
Mrs. Joan Walker Miller
Mr. Nott Naganidhi
Mr. James E. Ohlmacher
Mr. Richard S. Pope
Mr. James J. Rapalje
Mr. Brian M. Ravenelle
Mrs. Susan Naylor Reinhardt
Mrs. Angela Langston Rimm
Mr. John M. Rimm
Mrs. Karen Smith Roberts
Mr. David C. Smith, Jr.
Mr. Scott Stoker
Mr. Richard J. Wittmann
Mr. Paul J. Wojcik

Class Of 1994

11.27% \$1,519.99

Mrs. Lauren B. Adams
Ms. Kimberly L. Alexander
Mr. Shawn M. Andrews
Mrs. Lynley Fenwick Asay
Mr. Ronald E. Brock
Mr. William E. Cagle, III
Ms. Roxanne R. Cannaday
Mrs. Barbara Miller Dietrich
Mr. John F. Doherty, III
Mrs. Carole Henderson Elrod
Mr. Rodney C. Harris
Mrs. Debra Craddock Johnson
Mr. James E. Justice
Ms. Aimee R. Linder
Mr. Pedro D. Mar-Lasso
Mrs. Constance Clow May
Mr. Edward B. McEnroe
Mr. Abeldez Rosa

SFC Johnnie L. Shubert, Jr.
Ms. Wendy M. Stone
Mrs. Dolores Blanton Strickland
Ms. Elizabeth M. Talbott
Ms. Anne E. Uleman
Mr. James D. Vencill

Class Of 1995

13.08% \$1,105.00

Ms. Camisha M. Bell
Mr. Michael C. Blewett
Mr. Aaron M. Burt
Mrs. Yvette Jackson Carson
Mrs. Mary T. Choi
Mr. Robert J. Cooper
Mr. Kevin V. Dennison
Ms. Barbara J. Frye
Mr. John J. Germano
Mrs. Mary E. Goins
Mr. John R. Green, Jr.
Ms. Katherine Hammill
Reverend Jan N. Hill
Mrs. Linda Johnson Hood
Mr. Teddy W. Jernigan
Mr. Willie J. Joseph
Mr. Ron LaVoie
Ms. Susan R. McGehee
Mrs. Susan P. Myers
Mr. William C. Nebrich
Mr. V. R. Outlaw, Jr.
Mr. Troy A. Pennington
Ms. Karen A. Rafferty
Mrs. Vicki L. Ronsick
Mr. Louis E. Seymour, II
Mrs. Pamela J. Strickland
Ms. Pamela G. Thibodeau
Ms. Deidra L. Vandervort
Mr. Benjamin E. Wells
Mr. James N. Whitt
Mrs. Pamela Williams

Class Of 1996

5.61% \$389.00

Ms. Katherine M. Brown
Mr. Randall B. Doucette
Ms. Sharnel R. Dunn
Ms. Kellie S. Fernandez
Ms. Michelle A. Jahren
Mrs. Joy Gilbert Ludwick
Ms. Felice E. McNair
Mrs. Karla Oates
Mr. Dana E. Overdorf
Mr. Lue J. Patterson
Mr. Brian R. Rodgers
Mr. Jeremy R. Sachs
Ms. Sharon Smyzuk
Mrs. Naomi R. Sullivan
Ms. Katharine A. Tucci
Ms. Leigh Watkins

Parents

Mr. and Mrs. Duane R. Adamson
Dr. Grant L. Alleyne
Mr. and Mrs. Wayne Allred
Ms. Camilla S. Antoniel
Mr. Tom Antoniel
Mr. and Mrs. Michael N. Arbogast
Mrs. Jean M. Aswad
Mr. and Mrs. Pete Barron
Mr. and Mrs. Kenneth Beaman
Mr. and Mrs. John V. Blackwell, Jr.
Ms. Lynn H. Boyle
Mr. and Mrs. Robert Bracey
Mr. and Mrs. Robert E. Broneill
Mr. and Mrs. Anthony Bugeja
Mrs. Lynda A. Campbell
Mr. and Mrs. Danny Cassidy

Mr. and Mrs. Lloyd Caulder
Mr. and Mrs. Michael T. Chiara
Dr. Ronald Childress
Mr. and Mrs. Thomas R. Chipman
Dr. and Mrs. Louis P. Clark
Mr. and Mrs. Gene Clayton
Mr. and Mrs. Kenneth Coker
Mr. and Mrs. Thomas Colucci
Mr. and Mrs. Steve Czajka
Mrs. and Mrs. James W. Davis
Mr. and Mrs. Nathaniel Davis, Sr.
Dr. and Mrs. Luciano Del Rosario
Dr. and Mrs. Anthony J. DeLapa
Mr. and Mrs. Ben C. Dennis
Ms. Janis H. Devalles
Mrs. Mangala Dongre
Ms. Jacklyn Downes
Mr. and Mrs. Ronald P. Dykas
Mr. and Mrs. Roger W. Ellender
Mr. and Mrs. Harold Emling
Mrs. Brenda Estes
Mr. and Mrs. Ted Eury
Mr. and Mrs. Alfred Fabrico
Mr. and Mrs. Ralph Fleming
Mr. and Mrs. J. Michael Frost
Mr. and Mrs. Steve Gage
Mr. and Mrs. Frank Gagliano
Mr. and Mrs. Earl E. Gottsman
Mr. and Mrs. John Graham
Col. and Mrs. R. Travis Griffin
Dr. and Mrs. Lavelly D. Gruber
Mr. and Mrs. John Gudaszkas
Mrs. Lynn M. Guthrie
Mr. Roy J. Haddock
Mrs. Anita S. Harding
Ms. Bette Hoffman
Mr. and Mrs. Ronald L. Horne
Mr. and Mrs. Gary Huffman
Mr. Thomas K. Hughes
Mr. and Mrs. Melvin Hurless
Mr. and Mrs. Cureton L. Johnson
Mr. Ronald W. Jones
Mr. and Mrs. Roger E. Jumper
Mr. and Mrs. Harry H. Kamens
Mr. and Mrs. Ernest P. Kirsch
Mr. and Mrs. Don H. Landreth
Ms. Sandra J. Latta
Mr. and Mrs. Ricky L. Logue
Mr. and Mrs. John W. Lynch
Mr. and Mrs. Richard Lyons
Dr. and Dr. Thomas N. Maki
Mr. Frank Mason
Mr. and Mrs. Thomas Massaro
Ms. Faye D. McCall
Ms. Eunice H. Mellott
Mr. and Mrs. Kendall R. Meyer
Mr. and Mrs. Mark Midford
Ms. Maureen M. Molter
Mr. and Mrs. Thomas Moody
Mr. and Mrs. Doug Moore
Mr. and Mrs. Robert B. Moseley
Mr. James Mulkin
Mr. and Mrs. Mack Mullis
Mrs. Claudia J. Myers
Mr. and Mrs. Jerry D. O'Quinn
Mr. and Mrs. Gary Olney
Mrs. Jeanne Panka
Mr. and Mrs. Vincent M. Paolozzi
Mr. and Mrs. Jimmy Parker
Reverend Carrie W. Parrish
Mr. Louis Patalano, III
Mr. Mark Patten, III
Mr. and Mrs. William A. Pettit
Mr. and Mrs. James J. Phillips
Mr. and Mrs. Terry R. Plank
Mr. Jerry Plumley
Mr. and Mrs. Michael J. Powl, Sr.
Mr. Terry D. Preiss
Mr. and Mrs. C. Allan Purgason

Mr. and Mrs. Eric Qually
Mrs. Linda Raide
Mr. and Mrs. Jose G. Ramirez
Mr. Robert B. Reaves
Mr. and Mrs. Charles Ruffing
Mr. and Mrs. Louis Safley
Mr. and Mrs. James A. Schuermann
Mrs. Laurier Sirois
Mr. and Mrs. George K. Skenteris
Mr. and Mrs. John Snyder
Mr. and Mrs. Don Spriggs
Mr. and Mrs. Thomas H. Stanley
Mrs. Maria G. Suarez
Mr. John Sullivan
Mr. and Mrs. Frederick R. Thorne
Mr. and Mrs. Tom Trotter
Mr. and Mrs. Wayne Tucker
Mr. and Mrs. Joseph P. Ulatowski
Mr. and Mrs. Kermit L. Updegrave, Jr.
Mr. and Mrs. Mark T. Uselman
Dr. and Mrs. Robert L. Van Laningham
Mr. and Mrs. Stanley A. Vandervort
Mrs. Diane W. VanNess-Gabriel
Mr. and Mrs. Robert M. Walker, Jr.
Mr. and Mrs. Alonzo Walston
Mr. and Mrs. Robert G. Warner
Mr. and Mrs. Ronald J. Warnken
Mr. J. Lee Warren, Jr.
Mr. John D. Watkins, Jr.
Mr. and Mrs. Patrick J. Welk
Reverend Woodrow Wells, Jr.
Mrs. Allyson M. Whevier
Mr. and Mrs. Perry A. Whited
Mr. and Mrs. John S. Wilda
Mr. Stephen A. Williams
Ms. Elisabeth Wood
Mr. and Mrs. Robert Wright

Scholarships

360 Communications
Air Force Aid Society Education Grant
Al Cesky Scholarship Fund
American Legion
American Legion Post 22
American Postal Workers Union
Archie Steele Trust
Army Emergency Relief
Billerica Memorial High School
Bladen Lakes American Business
Brian C. Cook Award
Capehart Fund
Centenary UMC
Christian Youth Fellowship
Civic Association Scholarship
The Clara Abbott Foundation
Combined Scholarship Fund
Connecticut State Golf Assoc.
Crescent City Rotary Club
Crescent City High School
Cumberland County Schools
Delaware State Golf
Delmarva Peninsula Golf Assoc.
Department of the Army
Dick Devoe Buick-Cadillac
The Dingus Educational Fund
DJ Scholarship
Dorothea Van Dyke McLane
Durham Fair Association, Inc.
Edenton Street United MC
Elks National Foundation
Enlisted Spouses Association
Estate of B. F. Stone
Estate of Helen Whitefield
Estate of Joan A. Pait
Esther Williams Scholarship
Fleet Investment Services
Former Agents of the FBI Fnd.
Forrest Lockey Education Fund



Dedication of the Richard L. Player Golf and Tennis Learning Center took place in August 1996 with an enthusiastic crowd on hand.

Francis Ouimet Caddie
 General Board of Higher
 Gentry County R-2 School Dist.
 Georgia State Golf Foundation
 Gnbrvths Scholarship Fund
 GS Metals
 Hamlet Lioness Club
 The Harriet & Frank Sherman
 Hartford Hospital
 Harvest Partners
 Hemophilia Resources
 Herr Foods, Inc.
 Hoffer Remainder Annuity Trust
 Hubbardston Lions Club
 J. Wood Platt Caddie
 Jack and Jill of America
 James E. Shepard Alumnu Assoc.
 Jerusalem Missionary Baptist
 Jon Pritsch Memorial Golf Fund
 Kiwanis Club of Linden, NJ
 LaVille High School
 Leslie Scholarship Fund
 Linden Rotary Scholarship Fund
 Lumbee River Electric, Inc.
 Lynch United Fund, Inc.
 Maine State Golf Association
 Marine Corp. Scholarship Fnd.
 Martin County High School
 Masonic Grand Lodge
 Masonic Homes
 McManus Middle School
 The Mid-Island Golf Club
 Miss Spivey's Corner
 N.C. Association of Insurance Agents,
 Inc.
 Naples High School
 Nassau County Golf Coaches
 National Merit Scholarship
 National Minority Junior Golf
 NCCU Foundation, Inc.
 New Jersey State Golf Assoc.
 Newburgh City School District

Norfolk Public Schools
 North Carolina Conference UMC
 Northern Ohio Caddie Fnd.
 Our Lady of Mercy Academy
 Oyster Harbors Club, Inc.
 Page High School
 Pilot Club of Fayetteville
 Princess Anne Lions Club
 Princeton High School
 The Priscilla Maxwell
 Providence Royal Arch #1
 Qlla Charities, Inc.
 Raeford Presbyterian Church
 Raise, Inc.
 The Riggs National Bank
 Roadway Package System, Inc.
 Rockingham Civitan Club, Inc.
 Rotary Club of Cape May, N.J.
 SNJ Conference Trust Fund
 St. Johns Lodge One Providence
 State of North Carolina Dept. of Public
 Instruction
 State Scholarship Fund
 Stephen Bufton Memorial Educational
 Fund
 Stiles-Hankins Scholarship
 Swansboro Rotary Club
 Synod of the Northeast, Presbyterian
 Church (USA)
 Texas Bowling Centers Assoc.
 Texas YABA Scholarship
 Town of Barre Mass.
 Triangle Community Foundation
 Triangle Educational
 Trustees Ancient Accepted Scottish Rite
 of Providence
 Tryon Youth Cnter, Inc.
 UCB Football Jamboree Fund
 Unaka Scholarship Foundation
 Valley Hospital Auxiliary Fund
 Warren Academy, Inc.
 Washington Sr. High School

The Wesleymen
 Mr. and Mrs. Andrew Westlund
 Wethersfield Citizens Scholarship
 Foundation
 White City High School Alumni
 Association
 Women's Federation for World Peace

Friends

Mr. and Mrs. Lynn Aaron
 Mr. Maness I. Adcox
 Mrs. Ruth Aderholdt
 Mr. Emory Albritton
 Mr. Richard R. Allen, Sr.
 Mr. and Mrs. Jerry L. Alphin
 Reverend Chester J. Andrews
 Reverend James A. Auman
 Ms. Louise L. Auman
 Mr. Von Autry, Jr.
 Mrs. Charles G. Avent
 Dr. Joseph W. Baggett
 Dr. Linda Sue Barnes
 Ms. Irene Barney
 Mr. Frank Barragan, Jr.
 Mr. and Mrs. Reginald M. Barton, Sr.
 Mrs. Earleene R. Bass
 Ms. Edna Bass
 Ms. Peggy G. Batten
 Mr. Albert Beard
 Mr. Bryan Beckwith, Jr.
 Dr. Elizabeth Belford
 Mrs. Martha Benfield
 Mr. and Mrs. Robert M. Bennett
 Ms. Willa Bennett
 Dr. Gillie Benstead
 Mr. and Mrs. Terry C. Bentley
 Col. Frederick W. Best Jr., USA (Ret.)
 Ms. Shirley H. Betts
 Mr. and Mrs. Frederick L. Beyer, Jr.
 Mr. John Bifareti
 Ms. Janet L. Bird

Mr. W. A. Bissette
 Dr. Erik J. Bitterbaum
 Dr. Joan Bitterman
 Mrs. Carolyn Bittle
 Mr. James C. Black
 Ms. Susan Blackburn
 Dr. Mott P. Blair
 Mr. Harold Blake
 Mr. Steven K. Blanchard
 Mr. Graham B. Blanton
 Dr. Paul R. Block
 Mr. Robert W. Bloodworth
 Ms. Martha Bock
 Mr. Tommy Bolton
 Mr. and Mrs. J.K. Bostick, Sr.
 Mrs. Josephine S. Boyd
 Mr. Mark T. Branch
 Mr. Eric Brandon
 Judge and Mrs. E. Maurice Braswell
 Ms. Barbara P. Breece
 Mr. George W. Breece
 Mrs. Lynn Brewer
 Mr. Hal Broadfoot, Jr.
 Ms. Bette Broadwell
 Ms. Summer E. Brock
 Mr. and Mrs. Edwin N. Brower, Jr.
 Mrs. Elizabeth A. Brown
 Mrs. Mary Lynn Bryan
 Mr. and Mrs. A. B. Bryant
 Mr. John G. Buie, Jr.
 Mr. Ben F. Bulla
 Mrs. Kathryn G. Bundy
 Mr. and Mrs. Kenny M. Burke, Jr.
 Ms. Vivian Burnett
 Mrs. Julie H. Butler
 Mr. Jim Caison
 Mr. Henry C. Campen
 Ms. Ruby J. Campen
 Mrs. Jean Canham
 Mr. Keith Cannon
 Mr. Thomas Carey
 Mr. George E. Carter

- The Reverend Theodore V. Carter, Sr.
Mrs. Doris Cassanova
Mr. and Mrs. Hartley Causey, Jr.
Mr. Robert J. Chaffin
Mr. Darl H. Champion
Dr. Suzan K. Check
Judge and Mrs. Sol G. Cherry
Dr. and Mrs. Robert S. Christian
Chums, Inc.
Mr. James W. Clark
Dr. JoAnn Clark
Mrs. Linda Clark
Mrs. Mary Pride Clark
Mrs. Maureen Clark
Mr. and Mrs. Samuel J. Clark, Jr.
Dr. Theresa P. Clark
Mr. Walter B. Clark
Mrs. Carla Clift
Dr. Betty Cline
Dr. and Mrs. Charles Q. Coffman
Dr. Dan Cogswell
Mrs. Joycelyn W. Cogswell
Mr. Alan Coheley
Mr. and Mrs. John S. Collie
Mr. and Mrs. C. Wayne Collier
Mrs. Mary E. Collier
Mr. Norman A. Coltrane
Mr. Charles F. Colyer
Mr. and Mrs. Timothy Combs
Mr. John Cone
LTC and Mrs. J.A. Conley
Mr. Steve Conley
Cooke Foundation
Mr. Robert H. Cooper
Mrs. Duke B. Crane
Mr. Del Crawford
Mr. and Mrs. Luis Cribb
Mr. Russell C. Crowell
Mr. and Mrs. Philip J. Crutchfield
Culbreth Memorial UMC
Cumberland Crime Stoppers
Mr. Burhl Cunningham
Mr. and Mrs. Daniel F. Currie
Ms. Katrina Currin
Dr. and Mrs. C. T. Daniel
Mrs. Libby S. Daniel
Mr. and Mrs. James A. Davis
Mr. Alan Dawson
Dr. and Mrs. Anthony J. DeLapa
Mrs. Ingeborg Dent
Ms. Gail Dickinson
Mr. Keith Dimsdale
Mr. John Dixon
Mr. Joseph F. Doll, Jr.
Mr. and Mrs. Eddie Dorsett
Dr. Claude P. Dowd
Mr. and Mrs. John P. Dowd III
Mrs. C. C. Duell
Ms. Nell Duncan
Dr. E. L. Dunn
Mr. and Mrs. S. S. Dunn
Mr. Samuel Dunn
Durham District United Methodist
Women
Ms. Nicole R. Eaker
Edenton Street MC
Mrs. Kensley Edge
Mr. Walton C. Edge, Jr.
Mr. and Mrs. Sam R. Edwards
Mr. John Elliott
Mrs. Lorraine M. Ellzey
Ms. Lutte Erwin
Estate of Katharine Purdie
Mr. and Mrs. Monroe E. Evans
Mr. Robert Exum, Jr.
Ms. Rachel Faircloth
Fayetteville Plastic Surgery
Fayetteville United Methodist District
Parsonage Fund
Mr. Louis Feraca
Mr. and Mrs. Robert W. Ferris
Mr. and Mrs. Lewis M. Fetterman
First Presbyterian Church
Dr. and Mrs. Malcolm Fleishman
Mr. and Mrs. Herbert Fleishman
The Florence Rogers Charitable Trust
Mrs. Helen C. Foster
Dr. Loleta W. Foster
Mr. and Mrs. Michael A. Fradel
Ms. Jennifer Franklin
Mr. and Mrs. Robert C. Frazier
Mr. Daniel P. Froneberger
Mr. Charles R. Gaddy
Mr. Robert Gaines
Dr. and Mrs. E. C. Garber, Jr.
Mrs. Jane W. Gardiner
Mr. and Mrs. Charles A. Gardner
Dr. and Mrs. F. S. Gardner, Jr.
Dr. and Mrs. Gary B. Garison
Dr. and Mrs. Willis C. Gates
Mrs. Ann Gelder
Mr. Robert S. Gibson
Mr. and Mrs. David R. Gilliland
Mr. John M. Gillis
Mr. and Mrs. A. P. Gnnann, Jr.
Mr. and Mrs. Howard F. Godfrey
Dr. and Mrs. Louis G. Graff
Mr. Jerry D. Gregory
Mr. Bevan Grice
Mr. Daniel C. Griffin, III
Dr. Stanley G. Griffin
Dr. C. Arnal Guzman
Mr. Charles T. Haigh, Jr.
Mr. Phil W. Haigh, Jr.
Mrs. Maurine N. Hale
Dr. and Mrs. James S. Hall
Mrs. Lois B. Hall
Mr. Swayn G. Hamlet
Mr. John T. Hardy, Jr.
Mr. Alton L. Hare
Mr. and Mrs. James S. Harper
Ms. Margaret C. Harriss
Mrs. Betty U. Hasty
Mr. Robert C. Hatfield
Mrs. Mary Flagg N. Haugh
Mrs. Evelyn G. Hauser
Haymount United Methodist Men
Dr. M. Elton Hendricks
Mr. John T. Henley
Mr. and Mrs. Sidney R. High
Mr. J. Daniel Highsmith
Ms. Carol L. Higy
Mr. and Mrs. Rodney L. Hill
Mr. Richard H. Hobgood
Mr. Jerry Hogge
Ms. Mary M. Holben
Mr. and Mrs. Joe Hollinshed
Mr. Vivian Hollinshed
Mr. Harold D. Holmes
Mr. and Mrs. John Holmes
Mr. Charles B.C. Holt
Ms. Hannah Holt
Mr. Henry Holt
Mrs. Peggy Holt
Mr. Thomas A. Hood
Mrs. Darlene Hopkins
Ms. Pam Horne
Ms. Doris W. Howard
Mrs. Morie Murray Howard
Mr. and Mrs. Clyde M. Howie
Mr. Timothy D. Howie
Mrs. Jennifer B. Huggins
Mr. John E. Humphreys
Mr. Brad Hurley
Mr. John W. Hurley
Mr. Mark Hurley
Mr. and Mrs. Arthur P. Hurr
Mrs. Patricia D. Hutaff
Mr. and Mrs. W. D. Hux
Independent College Fund
Mr. Clarence C. Ingram
Dr. Bert Ishee
J.P. Riddle Charitable Fnd.
Mrs. DeeDee M. Jarman
Ms. Cheryl Jeffries
Mr. Glenn R. Jernigan
Mr. Charles R. Johnson
Reverend George W. Johnson
Mr. Gordon E. Johnson
Mrs. Jo Beth Johnson
Mr. and Mrs. Johnny F. Johnson
Mr. Tim Johnson
Dr. W. Robert Johnson
Dr. Wenda D. Johnson
Dr. J. Wesley Jones
Mr. and Mrs. W. Diehl Jones
Mrs. Marjorie M. Jordan
Dr. and Mrs. Weldon H. Jordan
Dr. William Jordan
The Reverend and Mrs. F. B. Joyner, Jr.
Mr. I. B. Julian
Mr. and Mrs. William Julian
Judge A. Elizabeth Keever
Mr. and Mrs. Frank Kelly
Ms. Iva M. Kelly
Ms. Holly Kendrick
Mr. Billy R. King
Ms. Martha G. King
Ms. Vera B. King
Ms. Sheila Kinsey
Mrs. Dorothy C. Kirkpatrick
Mr. Scott Kitrell
Kiwanis Club of Fayetteville
Mr. and Mrs. James M. Kizer
Dr. Barbara Klein
Reverend Dr. Garland Knott
Mr. Benjamin Kotin
Ms. Cheryl Kremer
Ms. Barbara A. Kushubar
Mrs. Edwina Kyle
LaFayette Society
Ms. Lois J. Lambie
Mr. and Mrs. Kenneth Lancaster, Jr.
Mr. and Mrs. Leon Landry
LTC and Mrs. Marshall A. Lanter, (Ret.)
Mr. and Mrs. Joseph J. Lassiter
Law Enforcement Support Serv.
Mr. Paige Ledford
Mrs. Neill Legg
Col. Alfred Lemire, (Ret.)
Mr. and Mrs. Jesse Leneave
Dr. Kenneth B. Lewis
Ms. Mary F. Lewter
Dr. Jen-Hsiang Lin
Mrs. Dena S. Lingle
Mr. David J. Little
Lizzie Lamb Bible Class
Mrs. Pauline Longest
Mr. C. Keith Love
Mr. Dallas D. Lowdermilk
Mr. and Mrs. Dallas H. Lowdermilk
Dr. William P. Lowdermilk
Mr. Rick Lowe
Mr. and Mrs. Richard H. Luedeke
Dr. George Maguire
Mr. Joseph Maloney
Mrs. Claire S. Mansfield
Dr. John M. Marr
Mr. Rufus Marshall, Jr.
Ms. June Martin
Ms. Aubrey M. Masilela
Mr. and Mrs. Guy E. Mason, Jr.
Mr. George Massengill
Mr. and Mrs. Bobby Matthews
Dr. Harold E. Maxwell
Mr. and Mrs. Floyd W. McCall
Mr. and Mrs. J. L. McCall
Mr. John L. McCall
Ms. Mary F. McCall
Dr. Clyde G. McCarver
Mr. and Mrs. Eddy McDonald
Mr. David P. McDuffee
Mr. and Mrs. G. M. McDuffie
Mr. Robert McEvoy
Dr. and Mrs. Oscar L. McFadyen, Jr.
Mr. Marvin McGathy
McGregory Baptist Church
Mrs. Maria E. McIver
Mr. John L. McKinney
Mr. and Mrs. Marcus G. McKnight
Mr. Thomas R. McLean
Reverend Dr. Samuel D. McMillan, Jr.
Mr. and Mrs. Samuel H. Meares
Mr. Donald L. Melvin
Mr. Taylor M. Melvin
Mrs. Betty H. Messer
Ms. Paula Miller
Ms. Pat Mingle
Bishop C. P. Minnick, Jr.
Miss Pickle Festival
Mr. and Mrs. John C. Mitchell
Mr. John M. Monaghan, Jr.
Mr. and Mrs. E. Ray Moore
Mrs. Jean Moore
Mr. and Mrs. L. E. Moore
Mr. William T. Moore
Mr. and Mrs. Frank M. Moorman
Mr. and Mrs. Joe H. Morris
Ms. Pearlina B. Morrison
Mr. and Mrs. James W. Mulkey
Mrs. Georgia C. Mullen
Mr. Joseph E. Mullen
Dr. Allen Mumper
Mr. Ocie F. Murray, Jr.
Dr. Peter Murray
Mr. and Mrs. Gerald C. Musselwhite, Jr.
Mr. Mike Myers
Mr. Mitchell A. Nance
Col. and Mrs. Robert B. Nelson
Ms. Anne M. Nimocks
Mr. David R. Nimocks, Jr.
Dr. I. H. O'Hanlon
Mrs. Sarah O'Hanlon
Mr. and Mrs. Thomas Olcott
Dr. and Mrs. Clarence S. Olive
Mr. and Mrs. J. Harvey Oliver, Jr.
Mrs. Virginia T. Oliver
Mr. Vernon Owens
Dr. Shivappa Palled
Mrs. Diane M. Parfitt
Mr. Alton C. Parker
Mr. and Mrs. Ervin L. Parrish
Partners for Education
Mr. John C. Paté
Mr. and Mrs. Thomas V. Pate
Mrs. Rebecca H. Pattishall
Mr. and Mrs. Robert Paye
Dr. Richard W. Pearce
Mr. Jim Peebles
Mrs. Suzanne Pennink
Mr. Robert Perkins
Mr. and Mrs. Earl Peterson
Mr. Chappie Petree
Dr. John C. Peyrouse, Jr.
Capt. and Mrs. John P. Pilon, Sr.
Reverend and Mrs. Charles R. Pittman
Mrs. Mandy Pittman
Mr. Richard L. Player, Jr.
Pleasant Grove UMC
Mr. Calvin Poole
Dr. Kenneth A. Popio
Mr. and Mrs. Alan M. Porter
Ms. Dena Potter
Dr. Michael Potts
Ms. Eleanor S. Powell
Dr. Julia Prewitt

1996 Annual Report

Mr. Lawrence M. Priest
Dr. William L. Pritchard
Mr. Bruce R. Pulliam
Mr. Henry Pulliam
Mrs. Susan Pulsipher
Mr. Kelly D. Puryear
Ms. Monique Quattlebaum
Mrs. Marjorie U. Ragan
Raleigh Dist United Meth. Men
Mr. Claude W. Rankin, Jr.
Mrs. Anne C. Raper
Mr. Hector N. Ray
Mr. and Mrs. Rhett A. Raynor
Mr. and Mrs. Daniel H. Reaves
Mr. and Mrs. John K. Redmon
Mr. Richard D. Reece
Mrs. Merle B. Reichle
Mrs. Emmi M. Rhodes
Mr. David M. Rice
Mr. Mark Rice
Mr. William M. Richardson, Sr.
Mrs. Earline P. Riddle
Ms. Janet Ridgen
Mr. Nat Robertson, Jr.
Mr. Richard A. Rode
Mr. J. Michael Rogers
Dr. and Mrs. Otto Rogers
Mr. Gordon Rose
Mr. James Rose
Mrs. Louise H. Rouse
Mr. Travis Rouse
Mr. and Mrs. R. Frank Rozzelle
Mr. and Mrs. Richard F. Rozzelle, IV
Mr. Russell S. Rozzelle
Mr. Albert E. Rummans
Mr. D. P. Russ
Mr. Dean F. Russell
Mr. and Mrs. Rusty Russell
Mr. J. D. C. Ryan
Mr. Richard C. Ryan
Mr. and Mrs. Leonard Saleeby
Ms. Dolores M. Sanchez
Mrs. Carol D. Sanders
Sandhills Chapter of NCACPA
Mr. Terry Sanford
Mr. Wilford R. Saunders
Ms. Peggy G. Sautter
Mr. Don Sawicki
Dr. and Mrs. Charles F. Scarborough
Scotch Plaid Charter Chapter
Ms. Martha Scott
Mr. and Mrs. Talmage W. Sexton
Mr. and Mrs. William R. Sharp
Mr. and Mrs. W. T. Shepherd
Mr. Dana J. Shirley
Mr. Robert H. Short
Dr. Christian F. Siewers
Dr. John Sill
Mrs. Sandy Simpler
Dr. Narendra P. Singh
Mrs. Betsy Small
Mr. Arthur Smith
Ms. Evelyn Smith
Mr. Greg Smith
Reverend J. Thomas Smith
Mr. James H. Smith
Ms. Josephine K. Smith
Mr. and Mrs. Robert T. Smith, Jr.
Mr. Steven Smith
Ms. Vivian M. Smith
Mr. and Mrs. Alfred E. Smyntek
Ms. Mae Belle L. Smyth
Mr. Alex Southerland
Mr. and Mrs. William R. Spade

Mr. and Mrs. Timothy W. Spangler
Mr. Robert O. Spicer, Jr.
St. John's Episcopal Church
Dr. Robert R. Stanton
Mr. and Mrs. Ambrose R. Staples
Mr. Martin W. Sternlicht
Dr. and Mrs. Albert Stewart, Jr.
Mr. and Mrs. G. Craig Stewart, III
Ms. Kathy Stewart
Mrs. Marie T. Stewart
Mr. Marlin M. Stewart
Mr. and Mrs. Herbert G. Stiles
Mr. and Mrs. James S. Stilwell
Ms. Yvonne R. Stohlman
Dr. and Mrs. Frank P. Stout
Miss Kay Strickland
Mr. and Mrs. Harold J. Sturdivant
Miss Mary Lou Suddath
Mr. Michael H. Sullivan
Mr. Danny Summerlin
Dr. James K. Suttie
LTC and Mrs. Walter M. Swing
Ms. Ethel K. Sykes
Mr. Jim Sypult
Mrs. Lura S. Tally
Ms. Pat Talty
Tau Gamma Gamma
Reverend and Mrs. Bruce D. Taylor
Mr. and Mrs. Donald R. Taylor
Mr. and Mrs. Sam Taylor
Mr. Richard P. Taylor
Mr. Gerald A. Teele
Mr. R. Dillard Teer
Mr. and Mrs. Thomas T. Teeters
Col. Cader C. Terrell, USA (Ret.)
Mr. and Mrs. Chase S. Thomas
Mr. Earnest Thomas
Gilbert M. Thomason
Mr. and Mrs. C. Ray Thorne
Mr. Edward Tindell
Mr. W. Lyndo Tippett, CPA
Dr. John O. Tobler
Mr. Joseph H. Todd
Ms. Margaret B. Tunstall
Mr. and Mrs. Robert L. Turner
Mr. and Mrs. Roy Turner
Mrs. Mary M. Tyler
Mrs. Terri Union
United Methodist Women, Calvary
Methodist Church
United Methodist Women, N.C.
Conference
Mr. and Mrs. Lewis Upchurch
Mr. Chuck Uzzell
Mrs. Jewell Vanharlingen
Mr. and Mrs. C. H. Von Rosenberg
Mr. and Mrs. Thomas Walden
Ms. Gail Walker
Mr. Joe W. Walker
Mr. Mark Walker
Mr. Douglass W. Wallace
Mrs. Harriet E. Wallace
Ms. Margery P. Wallace
Dr. Richard Walsh
Mr. John L. Walston
Dr. James X. Ward
Mr. and Mrs. George H. Waren
Mr. and Mrs. G. Eddie Waren
Mrs. Jane Warfel
Mr. James R. Warner
Dr. Theresa C. Warrell
Mr. Charles E. Warren
Mr. and Mrs. Percy A. Warren
Mr. and Mrs. William G. Warren

Mr. Jack A. Watson
Mr. and Mrs. Earl L. Weaver, Jr.
Mr. L. Stacy Weaver, Jr.
Dr. and Mrs. Ronald L. Webster
Mr. and Mrs. J. Weeks
Wesley Heights UMC
Mr. Eric Westerfield
Mr. John H. Wheeler
Dr. D. Wayne Whetsell
Dr. Joyce White
Mr. and Mrs. Charles R. Whitley
Mr. Roy A. Whitmire
Mrs. Donna Wiggs
Ms. Rita S. Wiggs
Mrs. Neill Wilkins
Mr. Augusta Williams
Mr. and Mrs. Nelson Williams
Mr. and Mrs. Robert S. Williams
Mr. Sherrill Williams
Mr. Thomas W. Williams, Jr.
Mr. Harrison H. Williamson
Mr. and Mrs. David G. Wilson
Ms. Linda Wilson
Dr. Paul F. Wilson
Mr. R. Parker Wilson
Mr. and Mrs. Sam M. Wilson
Reverend Herman S. Winberry
Dr. Samuel Womack
The Womans Club
Mr. and Mrs. C. Fletcher Womble
Mr. William B. Woods
Mr. John Wyatt, Jr.
Mr. Ramon L. Yarborough
Mr. and Mrs. Wilson Yarborough, Jr.
Brig. General Norman Youngblood

Corporations

AAA Glass Company
Ace Pawn Shop
Air Products and Chemicals
Alcoa Foundation
Allstate Insurance Company
AMP Incorporated
Antex Exterminating
Arran Realty, Inc.
Arrow Exterminators of Fay.
Ashford & Company, Inc.
AT&T Foundation
Audrey's Avicultural Affairs
Bar-B-Que Hut
Bass Air Conditioning
Bass Music
Baywood Golf, Inc.
Belk
Bell's Seed Store
Bobby Taylor Oil Co., Inc.
Boulevard Pawn Shop
Bragg Pawn Shop
Branch Banking & Trust Company
Briggs & Sons Tire
Broadwell Construction Co.
Bryan Oil Company, Inc.
Bryan Pontiac-Cadillac Company
Bullard Furniture Company
Burlington Industries Fnd.
Cape Fear Amateur Radio Socty.
Cape Fear Animal Hospital
Cape Fear Realty & Brokerage
Cape Fear Supply
Cargill, Inc.
Carlyle Realty, Incorporated
Carolina Power & Light
Carpenter, Cammack & Assoc.
Caviness & Tolbert
Cellular One
Centura Bank
Champs Sporting Goods
Chandler's Piano Service
Cherokee Sanford Brick
Christy Ladies Apparel, Inc.
Cigna Matching Gifts Program
Clinton Machine Company
Coleman Realty Company
Coleman Sporting Goods, Inc.
Collier Insurance and Assoc.
Columbus County Hospital
Comfort Inn-Cross Creek
Consumers Title Company
Copiers Plus, Inc.
Cross Creek Merchants Assoc.
Cross Creek Heating & Air
Crowell Constructors, Inc.
Cumberland Carpets
Cumberland Community
David Alabaster Insurance
David Lain Realtors
Deco Car Wash
Dickens & Bass Real Estate
Dickinson Buick-Dodge
Dixie Pawn Shop-Military Supp.
Duke Power Company Foundation
Dunn's Nursery & Garden Shop
DuPont-Fayetteville
Eastern Medical Consultants
Econo Lodge I-95
Elliot Construction Company
Ellis-Walker Builders, Inc.
Employee Benefit Systems, Inc.
The Equitable Life Insurance
Express Stop Stores
Fay. Transmission Service
Fayetteville Publishing Co.
Finch Oil Company
First Citizens Bank & Trust Co
First Union Foundation
Floral Arts, Inc.
General Business Services
Gomez Auto Service
Great Plains Cattle Company
Gregory Poole Equipment Co.
GTE Foundation Matching
Haire Plumbing Company, Inc.
The Hartford Insurance Group
Hayes Hobby House, Inc
Healy Wholesale Company
Hewlett-Packard Company
Highland BP Service
Highland Cleaners, Inc.
Highland Press, Inc.
Highlander Golf, Inc.
Highsmith-Rainey Memorial Hosp
Hodges Associates, Inc.
Holmes Electric, Inc.
Holt Oil Company
Home Exteriors of Fayetteville
Home Federal Savings & Loan
Homemakers Furniture Interiors
Hope Mills Family Medicine Ctr
Hubbard Pipe & Supply, Inc.
Hunter Brothers
Hurst Annaho
Hutson Typewriter Company
IBM Matching Grants
Inacom Computer Center
J & S Locksmith
J. C. Penney Company, Inc.
J. J. Barnes Mechanical Co.
J. Leonard Davis Insurance

Jefferson Pilot Corporation
 Jernigan & Warren Funeral Home
 The Jewelry Annex
 John Hancock Insurance Company
 Johnson-Sherman Company
 Ken C. Lancaster Real Estate
 Kim's Nail Boutique
 King Electric of Fayetteville
 LaFayette Cemetery Park Corp.
 LaFayette Motor Sales, Inc.
 Leith Mitsubishi-Isuzu
 Leon Sugar's Men Shop
 Lever Brothers Company
 Lisa's Picture Framing
 Little & Pulley Office Machine
 The LSV Partnership
 Mail Boxes Etc.
 Marsh Kitchens of Fay., Inc.
 MBNA America Bank, N.A.
 McCune Technology
 McDonald Grading Company
 McDonald Lumber Company, Inc.
 McFadyen Music Company
 McFayden and Sumner CPAs
 McGeachy & Hudson Attorneys
 Mecco Construction Company
 Merrill Lynch & Co., Inc.
 Metropolitan Life Foundation
 Microsoft Corporation
 Mid-Way Barber Shop
 Midas Muffler Shops
 Military Pawn Shop
 The Mill End Store
 Milliken & Company
 Moorman, Kizer & Reitzel, Inc.
 Morris, Colyer & Associates
 NationsBank
 Neill Lindsay Insurance Agency
 New Sanford Milling Company
 North Carolina Natural Gas
 Osborne Glass Company, Inc.
 Pappas Drive-In
 Pinnacle Home Builders, Inc.
 Player, Inc.
 Powers-Swain Chevrolet, Inc.
 Prescription Center
 Procraft
 The Prudential Foundation
 Ready Mixed Concrete
 Reed-Lallier Chevrolet
 Reid, Lewis, Deese & Nance
 Rhudy's, Inc.
 RJR Nabisco, Inc.
 Rogers & Breece, Inc.
 Roy Haddock Surveying Co.
 Russell Corporation
 Russell Petroleum, Inc.
 Sandhill Property Management
 Sanford Turf Supply
 SCS Direct Mail Marketing
 Sears-Roebuck Company
 Select Fashions of Fay.
 Shaw Food Services Co., Inc.
 Short Stop Food Mart
 Show-N-Pet
 Shuller-Ferris Associates
 Sigma Construction Co., Inc.
 Singleton, Murray, Craven &
 Smithboro Furniture Company
 Smooth Travel
 Southern Gin & Grain Company
 Southland Rental & Supply Co.
 Spectacles
 Sprint Foundation
 Sprint-Carolina Telephone
 State Farm Companies Fnds.
 Stereo World
 Stewart Oldsmobile Nissan
 Systel Office Automation

Tallywood Shopping Center
 Telephone Answering Service
 Tile Inc. of Fayetteville
 Tim Newton Real Estate
 Townsend Real Estate
 Tri-Arc Food Systems, Inc.
 Triangle Bank
 Tucker Real Estate, Inc.
 Union Corrugating Company
 United Carolina Bank
 Wachovia Bank of N.C.
 Weaver Commercial Properties
 Weaver Development Company
 Weber Building Company
 Wiener Works of Cumberland Cty
 Williams Printing
 WKML

Gifts were received in 1996 in honor of the following

Mr. Robert C. Hatfield
 Mr. Jerry Hogge
 Mrs. Morie W. Howard
 Dr. Robert Johnson
 Senator Terry Sanford

Gifts were received during 1996 in memory of the following

Mr. James B. Archer
 Mr. Charles G. Avent, Jr.
 Mrs. Lynn Baker
 Mr. William Black
 Mrs. Meladie J. Blasko
 Ms. May Ruth Caddell
 Miss Anna Campbell
 Mr. Frank Canady
 Col. Robert C. Canham
 Mrs. Rubu Carter
 Mr. Guy A. Ciampa
 Mr. Wil Cissel
 Mr. Cecil Dew
 Mr. and Mrs. Alton Edmondson
 Mr. Don Eller
 Mrs. Helen Ellis
 Mr. Joseph C. Gardner
 Ms. Julia Hauser
 Mr. Ray Hayman
 Mr. Napoleon Henderson
 Ms. Frances Huss
 Mrs. Ormah Jenkins
 Mrs. Rosa Jones
 Mrs. Elisabeth Jordan
 Mr. Kenneth K. Kirby
 Mrs. Jennie Lowdermilk
 Mrs. Fred C. McDavid
 Mrs. Alma McQueen
 Mrs. Robert L. Mohn
 Mrs. Lois Moore
 Mrs. Joy Odum
 Mrs. Joan Meade Pait
 Mrs. Allie Perkins
 Mrs. Costella Petty
 Mrs. Carolina Pierce
 Miss Katherine Purdie
 Mr. Aaron Raynor
 Mrs. Dorothy Renne
 Mr. Cecil Sanford
 Mrs. John C. Shaw
 Mr. Paul S. Shaw
 Mr. Joseph Shuta
 Mr. Richard Small
 Mr. J. W. Smith
 Mr. Daniel Soodoo
 Mrs. Macy M. Stell

Mr. Gilbert Thomason
 Mrs. Helen Thompson
 Mr. George Vassler
 Mrs. Macil Wagaman
 Mrs. Jane Waterfield
 Mrs. Louise L. Watson
 Mrs. Ruby Westmoreland
 Mrs. Hazel Wiggs
 Mr. Walter Williams
 Mrs. Elizabeth Stinson Wilson

The following have contributed to the Independent College Fund of N.C.

Advance Stores Company, Inc.
 Akers Foundation, Inc.
 Allied Signal
 ALLTEL Corporation
 American Greetings Corporation
 Ametek lamb Electric Division
 Annabelle Lundy Fetterman
 Artee Industries, Inc.
 AT&T Foundation
 Bank of Granite
 Barnhill Contracting Company
 Bassett Furniture Industries
 E. N. Beard Hardwood Lumber
 Becton, Dickinson and Company
 The Belk Foundation
 Belk Hudson Leggett Department Stores
 BellSouth Telecommunications
 Bernhardt Industries, Inc.
 Best Distributing Company
 Billings Freight Systems
 Biltmore Farms, Inc.
 The Blumenthal Foundation
 The Bolick Foundation
 W. R. Bonsal Company, Inc.
 Borden Manufacturing Company
 BRADYtrane
 Branch Bank and Trust
 Bridgestone/Firestone
 Bristol-Myers Squibb
 Brown & Williamson Tobacco
 The Broyhill Family Foundation
 Budd Services
 Burlington Industries
 J. W. Burrell, Inc.
 Cape Industries
 Cape Industries Scholarship
 Carolina Builders Corporation
 Carolina Mills, Inc.
 Carolina Power & Light
 Carolina Steel Corporation
 CarQuest
 The A. B. Carter Foundation
 Central Carolina Bank
 Centura Bank
 Chesebrough Pond's USA
 Ciba Corporation
 CJS
 Coastal Lumber Company
 Coats North America
 Cogentrix
 Collins & Aikman
 Colonial Pipeline
 Coming, Inc.
 Cone Mills Corporation
 Cooperative Bank for Savings
 Corn Products
 CSX Corporation
 Dacotah Foundation
 Joseph Dave Foundation
 Archie K. Davis
 Delta Airlines
 Deluxe Corporation Foundation
 The Diamond Trust
 The Dickson Foundation
 Diebold, Inc.
 Dillard Resource Net
 The Dispatch
 The Dixie Yarns Foundation
 R. R. Donnelley
 Dounation for Independent Higher Education Staff
 The Dover Foundation
 Drexel Heritage
 Duke Power Company
 Engraph, Inc.
 Allison Erwin Company
 Export Leaf Tobacco Company
 Family Dollar Stores
 Fayetteville Publishing Company
 A. E. Finley and Associates
 First Citizens Bank
 First Gaston Foundation
 Fletcher Industries
 Florida Steel Corporation
 Ford Motor Company
 John P. Frazee
 Freudenberg Spunweb Company
 Galey & Lord
 Garris Evans Lumber
 Georgia Pacific Corporation
 Gerber Companies Foundation
 James K. Glenn, The Glenn Family Foundation
 Golden Corral Corporation
 Goldsboro Milling Corporation
 Goodmark Foods, Inc.
 Goodyear Tire & Rubber Company
 Greensboro News & Record
 GTE South
 Guardian Corporation
 Guiford Mills
 Hackney Brothers, Inc.
 N. B. Handy Company
 Mr. and Mrs. Charles C. Hargrave
 Felix Harvey Foundation
 Hecht's
 Heilig Meyers Furniture
 The Alex Foundation Hemby
 High Point Bank & Trust
 Hoechst Celanese Foundation
 Holt Hosiery Mills, Inc.
 Hooker Furniture Corporation
 Hornwood, Inc.
 Houghton Mifflin Company
 Howard Construction
 John W. Hunt
 Industrial & Textile Supply
 Industrial Federal Savings
 Ingersoll-Rand Company
 Ingold Company
 Insteel Industries, Inc.
 Integon Corporation Foundation
 International Telephone & Telegraph Company
 Interstate/Johnson Lane
 Jac, Inc.
 Jefferson Pilot Communications
 Johnson & Johnson Family
 Johnson Controls
 J. A. Jones Construction
 Frank H. Kenan
 Kennametal, Inc.
 The Glenn E. Ketner Family Foundation
 Kingsdown, Inc.
 Konica Manufacturing U.S.A.
 Ladd Furniture
 The Lance Foundation
 Leath, McCarthy & Maynard
 Lederle Praxis Biological
 Mr. and Mrs. Richard T. LeGrand, Jr.
 Lenoir Mirror Company

FANNIE FARMER WAS DEVOTED TO METHODIST COLLEGE

Methodist lost one of its finest staff members February 23, with the passing of Fannie Knox Farmer, a member of the housekeeping staff who had worked at the college since the mid 1960's.

Mrs. Farmer suffered a stroke on Tuesday, February 18 and died the following Sunday morning at Columbia Highsmith-Rainey Memorial Hospital. She was 65.

Fannie's first job at Methodist was working in the dishroom in the college cafeteria. Her husband Clarence worked in the kitchen.

In the early 70's, when ARA took over food service at the college, Fannie became the housekeeper for the library and the Student Union. Those were the venues she enjoyed most, because that's where students and staff experienced "hard work" and "good times." It wasn't easy cleaning up after all those assemblies, meals, and dances, but Fannie never complained.

For the last several years, Fannie was assigned to Reeves Auditorium/Fine Arts Building. But during semester breaks and peak conference times each summer, she could still be found cleaning and waxing floors in the Berns Student Center and the residence halls.

Fannie was the mother of eight



children and had been a widow since 1988. At least two of her children were college graduates and most of the others had taken some college courses; she was proud of that. She is survived by two daughters, six sons, a sister, two brothers, and nine grandchildren.

Fannie was a faithful member of Mt. Hebrew A.M.E. Zion Church, located about a mile north of the college on Ramsey Street. She was a deaconess and choir member there and an active member of several other church groups.

An overflow crowd attended her funeral there February 27; described in the program as a "homegoing" and a "service of triumph."

Methodist College friends provided dinner at Fannie's wake and held a memorial service for her Wednesday, March 5 in Hensdale Chapel.

In her eulogy of Fannie, Rev. Carrie Parrish recalled the warm welcome she received from Fannie on her first day of work at Methodist College. Rev. Parrish said she was struck by: 1) Fannie's genuine friendliness and concern for others, 2) Her steady, consistent work, and 3) The light in her eyes when Fannie talked about the College and its students, her church, or her children.

NEW ACTING COMPANY FEATURES M.C. TALENT

Methodist College staff and students, past and present, are actively involved in a new professional theatre company which has opened in the Cape Fear Region.

Dr. Jack Peyrouse, former chairman of M.C.'s Theatre and Speech Dept., has started a professional acting company called *Mysteries Improvable, Ltd.* The group gave its first performance of murder and mayhem at the Fort Bragg Officers' Club November 14.

Mysteries Improvable, Ltd., has a repertoire of five plays which are suitable for various types of audiences (from a church bazaar to a sophisticated cocktail party) when a participatory mystery seems suitable entertainment.

Peyrouse's company consists of 20 local actors. Actresses with connections to Methodist are: Phoebe Hall, theatre instructor, Florence L. Cohen, former theatre instructor, and M.C. alumna Marilyn Richmond. Actors with ties to the College are: graduates Cliff Wells and George Roraback, former students Michael Thrash and Lane Wray, and Jack Peyrouse.

For more information about *Mysteries Improvable, Ltd.*, contact Jack Peyrouse, at (910)484-6646.

YES! Send Me a copy of **Celebrate 40!**

Videotapes of Methodist College's 40th birthday celebration, held last October 30, are available for \$15 through the Methodist College Alumni Association. Make checks payable to the MCAA and mail to:

Alumni Office
Methodist College
5400 Ramsey Street
Fayetteville, NC. 28311

Enclosed is my check for ____ copies of **Celebrate 40!**

Name _____

Address _____

City _____ State _____ Zip _____

If you have questions about your order, call 910-630-7200 or 1-800-488-7110. Please allow three weeks for mailing.

THE SMITH TWINS

YOUNG SCULPTORS PLAN TO FREELANCE FOR NOW

December graduates Kimberly Smith and Kristy Smith have returned home to Graham and are continuing their quest to gain recognition in the field of sculpture. Having already exhibited their work in Fayetteville and Burlington, they are refining their craft in hopes of gaining commissions from one or more companies that market modern sculpture.

Kimberly is the "wildlife artist" who deliberately sculpts unusual, endangered species of animals: the pangolin (a scaly African anteater), the harp seal, the giant panda, and jerboas (rodents that live in north Africa and Egypt). "I think animal conservation is important," she said, "and I try to convey to viewers of my work the vulnerability of many species. I also try to show people new animals they have not seen before."

Kim would like to develop an animal line of sculptures for Austin Sculpture or Sandicast, two major companies. She said she has admired Austin sculptures since high school, when she and her sister discovered and bought a few of their pieces at Myrtle Beach.

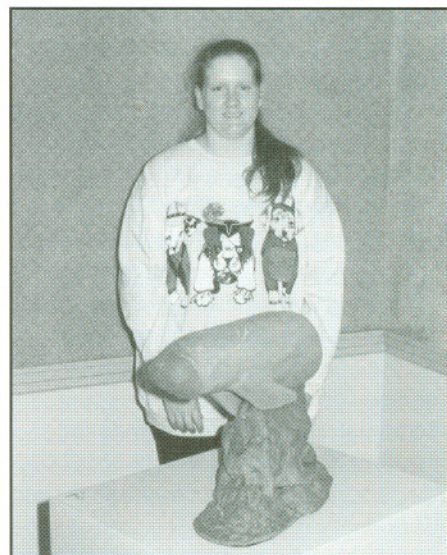
Kristy is a "romantic" whose paintings and sculpture deal with the human need for love. She's an avid reader of romance novels. Like her sister, she became seriously interested in sculpture while taking classes at Methodist College, classes taught by Silvana Foti. But she still loves to paint and her senior show contained an equal number of paintings and sculptures. One of her works won third place in a show sponsored by Cape Fear Studios.

Kristy said it is becoming increasingly difficult for traditional artists to gain recognition and to support themselves on their craft alone. She said new computer graphics technology has compounded the problem for painters and sculptors. She has written to several sculpture companies about doing freelance work for them and is trying to create more small pieces "to more easily accommodate the average buyer."



Kristy's senior exhibit was entitled "Love For Sale."

Inspired by an aunt, Sherry Durham, Kim and Kristy have known since they were 12 years old that they wanted a career in art. Having earned their degrees they continue to work in their home studio, exhibiting and selling their work whenever they have the opportunity. They are still looking for that "big break"—discovery and purchase of their work by a major art supplier—but until that happens, they are content to sell their work at area shows. Ideally, they would like to open their own sculpture business and studio in Graham.



"Encaptured Nature" was the theme of Kimberly's senior exhibit.



Methodist College 1997 Summer Sports Camps

June 9 - June 13
June 9 - June 13
June 15 - June 20
June 16 - June 19
June 16 - June 20
June 22 - June 27
June 22 - June 27
June 23 - June 27
June 23 - June 27
June 23 - June 27
June 28 - July 3
July 14 - July 18
July 21 - July 27

5400 Ramsey St. - Fayetteville, NC 28311

Pee Wee Baseball Camp
Academy of Tennis Excellence
Girls' Basketball Camp
Pee Wee Golf Camp
Little Big League Baseball Camp
Soccer Camp
Junior Golf Camp
Boys' Basketball Camp
Advanced Baseball Camp
Softball Camp
Soccer Camp
Boys' Basketball Camp
Volleyball Camp

**All dates are subject to change. Please call
(910) 630-7175 for more information.**

THEATRE DEPARTMENT TO END SEASON WITH OUTDOOR PRODUCTION

The Methodist College Theatre Department will close its 96-97 season with an all-faculty production of Mark St. Germain's comedy, *Camping With Henry and Tom*.

St. Germain has imagined what Henry Ford, Thomas Edison, and President Warren Harding might have talked about on a camping trip in 1922. The result is an intriguing, insightful, and often humorous look at these famous men.

The play is directed by Methodist College faculty member Phoebe Hall. Ms. Hall has been a professional actress for over fourteen years, and has been featured in several area productions, including *A Funny Thing Happened On The Way To The Forum*, *Radio Gals*, and *All In the Timing*.

Professional actors Dr. Paul F. Wilson, Edward R. Cohn and Robert Bloodworth portray Tom Edison, Henry Ford, and Warren Harding respectively. Dr. Wilson, has been seen in productions such as, *The Dining Room*, *All in the Timing*, *Amadeus*, and *A Thousand Clowns*.

Edward Cohn has recent professional credits performing and directing at Ohio's Huron Playhouse in *Of Thee I Sing* and *1776*. Last November he directed the Monarch Theatre production of *Story Theatre*.

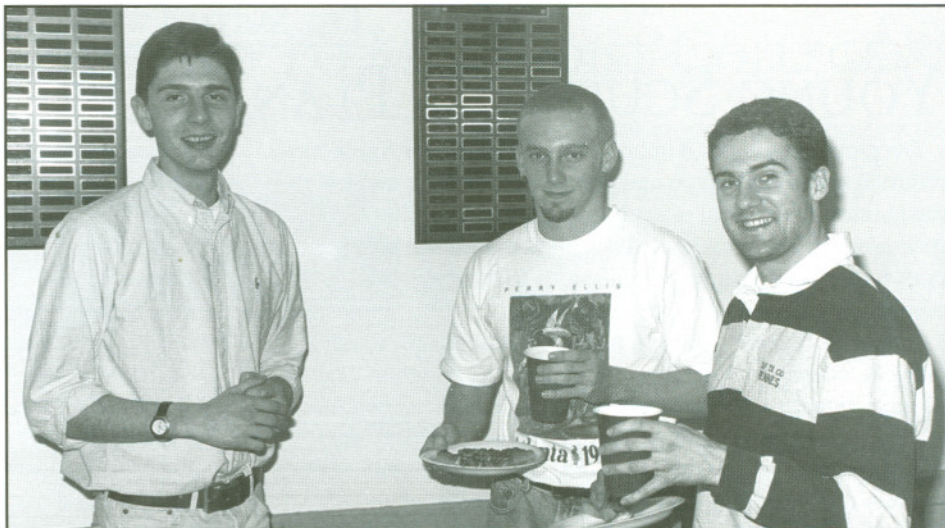
Robert Bloodworth has appeared at the Alabama Shakespeare Festival, the Alliance Theatre in Atlanta, and the Cherry Lane Theatre in New York City. He has also been seen in local productions of *Inherit the Wind*, *Driving Miss Daisy*, and *The Tempest*.

Camping With Henry and Tom will be staged April 17-19 at 8 p.m. and April 20 at 2 p.m. in O'Hanlon Amphitheater. Tickets are \$6 for adults, \$3 for students and senior citizens. Phone 630-7483 for more information.

COMING JULY 14-19

MUSICAMP '97

PHONE (910) 630-7103 FOR DETAILS



Sebastien Canard (l.) and Nicolas Castel visit with a current M.C. student at a recent pizza party held to promote French, British, and Mexican study abroad programs planned for this summer.

FRENCH STUDENTS ENROLL AT METHODIST

Methodist has once again broadened her horizons with the addition of two exchange students from Rennes, France. Sebastian Canard and Nicolas Castel have entered Methodist for the spring semester.

Both attend Sup de Co, part of France's Grand Ecole, the most superior of their colleges. The college has an enrollment of 500 and is equipped with the latest in computers and software. Approximately 100 exchange students attend Sup de Co each year, from various parts of the United States.

Methodist College students will have the opportunity to study there this summer. Tuition and fees and living expenses in a nearby apartment are about equal to the cost of a semester here. Classes in the French school are taught in English and consist of work comparable to typical American classes.

Rennes is a major city in north France, an hour southwest of Paris, with a population of about 200,000, including 50,000 students.

Sebastian and Nicolas are business majors concentrating in communication/advertising and marketing respectively. During their stay at Methodist they are taking courses in cost account-

ing, advertising, business writing, and marketing. They will receive B.A. degrees this year and M.A. degrees next year in international relations.

Both Sebastian and Nicolas have adjusted well to their new environment. They are living in the honors apartments here at Methodist and recently bought a car. They have visited Raleigh and several other Tar Heel cities and been shopping at an outlet mall in Smithfield.

Keep Your Methodist College Ties Strong!



Announcing
The 1997
Methodist College
Alumni Directory

It's the best way to
keep your Methodist
College connections
working for you!

**Get the Most Current Information Available on
Classmates in Four Separate Sections:**

Alphabetical Listings: Including fax and E-mail
Class Year Listings: With married and maiden names
Geographical Listings: By city and state
Occupational Listings: The Ultimate Networking Tool

To Order, Call our Publisher, Publishing Concepts at:
1-800-982-1590
or E-mail: pciservice@publishingconcepts.com



A 'THANK YOU' FROM THE SHERIFF'S DEPARTMENT

The Cumberland County Sheriff's Dept. recently presented a \$750 'thank you' gift to the Criminal Justice Association at Methodist. Last semester criminal justice students administered a door-to-door survey on community policing for the Sheriff's Dept. Pictured l. to r., are Cpt. Willie Brown, Larry Marshall, Chief Deputy Cuyler Windham, Dr. Darl Champion, Sheriff Earl "Moose" Butler, College President Elton Hendricks, Maj. Monroe Roscoe, Sgt. Joseph Parisi.

FCA ATTENDS REGIONAL CONFERENCE

Twenty-five Methodist College students attended the Fellowship of Christian Athletes (FCA) Convention January 31-February 2 at Ridgecrest, North Carolina. Rev. Carrie Parrish, campus minister, accompanied the group.

Students from colleges and universities throughout the Southeastern Region of the United States gathered for a time of worship and spiritual growth. Methodist has been represented at the past five conferences.

The Methodist College FCA Huddle, open to both athletes and non-athletes, meets on Tuesday nights at 9 p.m. in "The Cave" (Weaver Hall basement). The program has grown steadily over the past five years, thanks to the commitment of student leaders and Jim Peebles, advisor.

High profile speakers such as Albert Long (UNC Tar Heels), Brad Edwards (Atlanta Falcons), and Robert Brickey (Duke Blue Devils) have appeared at the MC Huddle meetings.



FCA members pose with Rev. Parrish

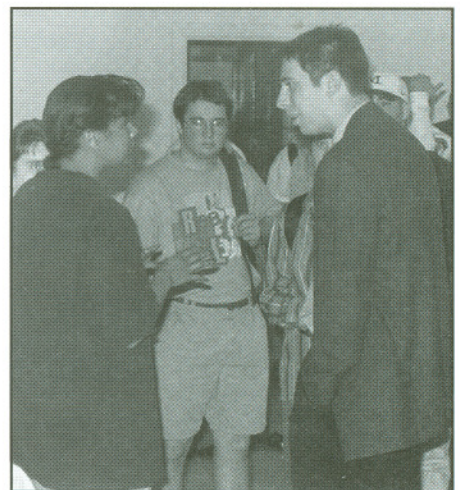
NATIONAL PRESIDENT OF SIERRA CLUB SPEAKS AT FORUM

Speaking to a capacity crowd February 21 in the Science Auditorium, Adam Werbach, national president of the Sierra Club, decried the characterization of his generation, Generation X, as apathetic and self-centered and said American youth are more involved in community service today than ever before.

Werbach was the guest speaker for the second annual Lura Tally Leadership Forum and he made the most of the occasion. He described the environmental movement as a great thing—an opportunity for people to work together to solve problems. "People in the environmental movement are concerned about protecting Americans' health and what makes America beautiful," he said.

The California native said college students can make a tremendous difference by lobbying Congress and state legislators. He then told the story of how Stephanie Jowers, a student at Tufts University, led a telephone campaign in 1994 that prompted Sen. John Kerry to cast the decisive vote for a federal bill to protect the California desert. The end result was three new national parks, including Joshua Tree, the largest in the continental U. S.

Werbach said America's most critical needs today are campaign finance reform and more citizen participation in the political process through voting and the expression of opinions on key issues.



Adam Werbach chats with M.C. students

MONARCH BASKETBALL LEAPS TO NEW HEIGHTS

The Monarchs saw their NCAA-III-leading 20-game winning streak end abruptly with a 95-63 loss, Mar. 15, to host Illinois Wesleyan in the NCAA-III Midwest Sectional championship game.

With the victory in front of 2,600 fans, the Titans (46-1 at their three-year-old home arena) advanced to their second-straight Final Four.

The Monarchs beat Chicago, 74-70, in the semifinal the previous night to earn its first-ever trip to the Sectional title game.

The loss in the final did not detract from the squad's monumental accomplishments. Methodist's first-ever trip to the "Elite Eight" marked the farthest drive in the tournament by any team from the South Region this year and the best finish by any

team from the DIAC ever.

The 1996-97 unit also established team records for the most victories (22), longest winning streak (20) and longest run in the NCAA III National Tournament ("Elite Eight" with three wins).

Earlier in the campaign, Methodist had recorded its first DIAC regular season crown in 19 seasons and its first DIAC tournament title in 20 years. The Monarchs also made the program's first NCAA-III National Tournament appearance in 20 campaigns.

Methodist now boasts a 5-3 all-time record (.625) in three overall appearances in the National Tournament, the best winning percentage and the second-most victories of any DIAC team in postseason play.

For senior tri-captains Teyles Bandy, Tyrone Bennett and Jason Childers, the season capped off three outstanding careers at Methodist.

"They (Illinois Wesleyan) beat us in every aspect," said Coach Bob McEvoy. "But I don't think that deters from the season we had, the run we made and all of the things that we did. I'm proud of my team."

With the loss of the three senior starters, the Monarchs still plan to re-



Jason Childers was named the DIAC Player of the Year and the DIAC Tournament MVP.

turn 10 of 13 varsity players for next year's campaign.

1996-97 MONARCH BASKETBALL (22-8)

DIAC Champion

DIAC Tournament Champion

NCAA-III Midwest Sectional Runner-up

Nov. 22	Goucher ^	L 68-70
Nov. 23	Marietta ^	L 71-82
Nov. 26	at Barton	L 66-75
Nov. 29	at Savannah A & D @	L 63-66
Nov. 30	Chowan @	W 83-78
Dec. 3	CHOWAN	W 86-77
Dec. 16	MARYVILLE (TN)	L 86-69
Jan. 8	at Maryville (TN)	L 63-55
Jan. 13	at Chowan	L 90-68
Jan. 15	GREENSBORO *	W 76-69
Jan. 18	at Ferrum *	W 72-62
Jan. 22	at Averett *	W 86-72
Jan. 25	SHENANDOAH *	W 97-75
Jan. 27	at N. C. Wesleyan *	W 82-69
Jan. 31	CHRIS. NEWPORT *	W 89-77
Feb. 2	N. N. APPRENTICE	W 71-62
Feb. 5	at Greensboro *	W 73-72
Feb. 8	FERRUM *	W 68-65
Feb. 10	AVERETT *	W 80-70
Feb. 12	at Shenandoah *	W 80-68
Feb. 15	SAVANNAH A & D	W 66-60
Feb. 17	N. C. WESLEYAN *	W 81-53
Feb. 22	at Chris. Newport *	W 83-61
Feb. 23	at N. N. Apprentice	W 88-53
Feb. 28	Greensboro #	W 75-65
Mar. 1	at N. C. Wesleyan #	W 50-49
Mar. 6	ROANOKE ##	W 67-63
Mar. 8	CHRIS. NEWPORT ##	W 72-67
Mar. 14	Chicago ##	W 74-70
Mar. 15	at Illinois Wesleyan ##	L 95-63

^ Hampden-Sydney Tip-Off Classic game

@ Savannah Art & Design Classic game

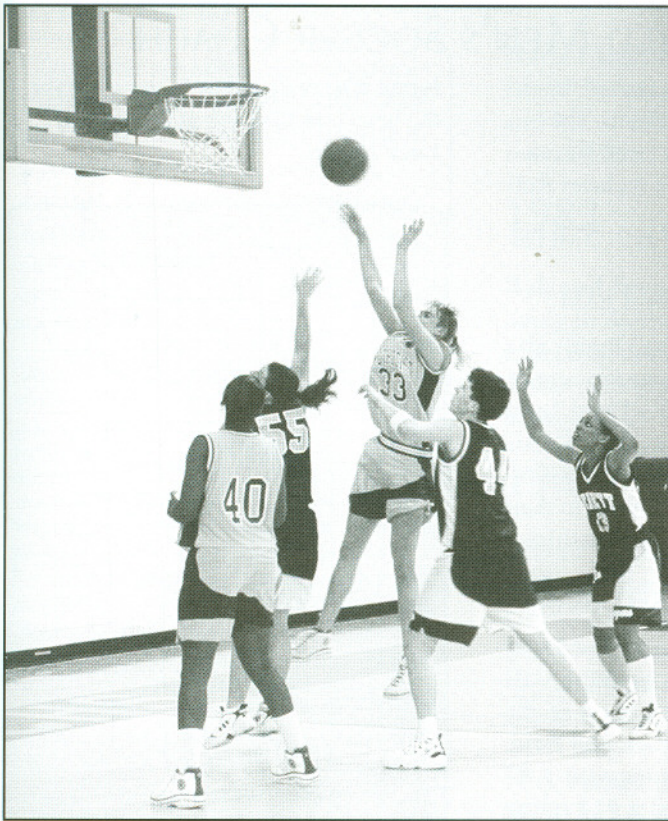
* DIAC regular season game

DIAC Tournament game

NCAA-III National Tournament game

1996-97 Monarch Milestones

- * NCAA-III "Elite Eight" entrant/Midwest Sectional runner-up (best-ever finish) *
- * The nation's longest NCAA-III winning streak (20) of the season *
- * First NCAA-III national tournament appearance in 20 years and third overall *
- * DIAC regular season (12-0) and DIAC tournament champion *
- * All-time winningest Methodist College men's basketball team with 22 victories *
- * League-record single-season mark (15-0) against DIAC teams *
- * The most DIAC regular season titles (seven) in the conference's 34-year history *
- * The third-most DIAC tournament titles (five) of any conference team *
- * Jason Childers named the DIAC Player of the Year and the DIAC Tournament MVP *
- * Bob McEvoy chosen as the DIAC Coach of the Year *
- * Childers, Montrell McNair and Tyrone Bennett picked to the First Team All-DIAC *
- * Childers and Teyles Bandy selected to the DIAC All-Tournament Team *
- * Childers and Bennett made the 15-member 1,000-point club list at Methodist *
- * Childers became the program's 10th all-time leading scorer (1,265 points) *
- * Bennett improved upon his status as the program's all-time leading shot-blocker *
- * Bennett set program block records for career (253), season (103) and game (8) *
- * Bennett ranked sixth in the country (NCAA-III) in blocked shots (3.43) *
- * Childers ranked 37th in the country (NCAA-III) in scoring (19.9 ppg) *



Amy Todd earned First Team All-DIAC accolades.

LADY MONARCHS FINISH SEASON STRONG

The young Methodist women's basketball squad, consisting of 12 freshmen, three sophomores, no juniors and no seniors, struggled to an 0-7 start in DIAC play.

However, the Lady Monarchs began to roar in February, winning five of their last seven contests against DIAC competition. The surge gave the Green and Gold a 4-8 regular season conference record as Methodist rose out of last place in the seven-team league and tied with North Carolina Wesleyan for fifth place.

In the regular season finale, the Lady Monarchs huffed and puffed and blew the Christopher Newport Lady Captains away, 79-58, on the road. The Methodist defense put a lasting dent in the CNU attack, dropping the Lady Captains' nation-leading 88.5-point offensive average substantially.

The win, the Lady Monarchs' first ever on CNU's home court, not only spoiled the Lady Captains' homecoming weekend, but their bid for an undefeated run in DIAC play as well. With the loss, Christopher Newport

dropped to 11-1 in the league, but maintained its number five ranking in the NCAA-III South Region poll.

As the number five seed in the DIAC Tournament at CNU, Methodist avenged a pair of earlier season losses with a 58-52 win against fourth-seeded Shenandoah. The Lady Hornets were the defending league tournament champions and had advanced to the NCAA-III National Tournament a year ago.

The following day, the Lady Monarchs were unable to beat top-seeded Christopher Newport for the second time in seven days. Methodist eventually fell, 83-65, but still claimed the distinction of having at least advanced to the tournament's semifinal round for the fifth time in six years.

Despite a much younger team, the 10-16 record that the Lady Monarchs turned in was considerably better than last season's 7-17 result. The 16 losses included eight to teams ranked among the South Region's top 10 according to the final NCAA-III poll.

The league's leading rebounder from the beginning of the season to the end, sophomore center Amy Todd was named to the First Team All-DIAC.

At the conclusion of the regular season, sophomore point guard Priscilla Farhan was ranked eighth in the nation, at NCAA-III, in assists with 6.4 per game. Todd was rated 24th in the country in rebounding with 12.1 boards per game.

1996-97 LADY MONARCH BASKETBALL (10-16)

5th in DIAC (regular season)

DIAC Tournament Semifinalist

Nov. 22	Bridgewater ^	L 80-74
Nov. 23	at Randolph-Macon ^	L 70-69 OT
Nov. 26	N. N. APPRENTICE	W 65-56
Dec. 3	at Meredith	L 70-63
Dec. 13	CHOWAN	W 86-58
Dec. 16	Savannah A & D at Hilton Head, SC	L 82-64
Jan. 14	at Chowan	W 78-60
Jan. 16	GREENSBORO *	L 68-65
Jan. 18	FERRUM *	L 60-59
Jan. 21	at Averett *	L 72-61
Jan. 23	at Bennett	W 70-60
Jan. 25	SHENANDOAH ^	L 63-61
Jan. 27	at N. C. Wesleyan *	L 55-51
Jan. 29	BENNETT	W 87-59
Jan. 31	CHRIS. NEWPORT *	L 76-62
Feb. 3	MEREDITH	L 64-62
Feb. 6	at Greensboro *	L 71-69 OT
Feb. 10	AVERETT *	W 71-60
Feb. 12	at Shenandoah *	L 78-66
Feb. 13	at Ferrum *	W 67-54
Feb. 15	SAVANNAH A & D	L 78-54
Feb. 17	N. C. WESLEYAN *	W 69-65
Feb. 21	at N. N. Apprentice	L 64-49
Feb. 22	at Chris. Newport *	W 79-58
Feb. 27	Shenandoah #	W 58-52
Feb. 28	at Chris. Newport #	L 83-65

^ Randolph-Macon Tip-Off Classic game

* DIAC regular season game

DIAC Tournament game

1997 MONARCH BASEBALL (11-4)

Feb. 21	N. C. Wesleyan ^	L 10-4	Mar. 26	MOUNT ST. MARY	3:00 p.m.
Feb. 22	Emory ^	L 11-3	Mar. 28	at N. C. Wesleyan *	2:30 p.m.
Feb. 22	Bridgewater ^	W 6-3	Mar. 29	at N. C. Wesleyan *	1:00 p.m.
Feb. 23	Millsaps ^	W 16-15	Apr. 2	WILMINGTON	3:00 p.m.
Feb. 23	Oglethorpe ^	W 13-11	Apr. 5	at Shenandoah *	2:00 p.m.
Feb. 26	YORK (PA)	W 10-6	Apr. 6	at Shenandoah *	1:00 p.m.
Mar. 4	JUNIATA	W 4-0	Apr. 12	FERRUM *	1:00 p.m.
Mar. 8	CHRIS. NEWPORT *	W 14-2	Apr. 13	FERRUM *	2:00 p.m.
Mar. 9	CHRIS. NEWPORT *	L 5-4	Apr. 15	MARY WASHINGTON	3:00 p.m.
Mar. 11	at St. Andrews	L 4-1	Apr. 17-20	at DIAC Tournament in Danville, VA	TBA
Mar. 13	MT. OLIVE	W 13-12	Apr. 23	CHOWAN	3:00 p.m.
Mar. 15	SAVANNAH A & D	W 4-2	Apr. 26	at Virginia Wesleyan	12 noon
Mar. 15	SAVANNAH A & D	W 4-1	Apr. 27	at Chowan	2:00 p.m.
Mar. 16	BRIDGEWATER	W 9-0	Apr. 29	at Guilford	3:00 p.m.
Mar. 17	TUFTS	W 12-3	May 9-10	at Sea Gull Classic at Salisbury State in Salisbury, MD	TBA
Mar. 18	NORTH ADAMS ST.	3:00 p.m.			
Mar. 19	at Barton	3:00 p.m.			
Mar. 21	at Campbell	5:00 p.m.			
Mar. 22	AVERETT *	1:00 p.m.			
Mar. 23	AVERETT *	2:00 p.m.			

^ Reebok Classic game in Atlanta, GA

* DIAC regular season game

MONARCH MEN EXCEL AT MASON-DIXON CONFERENCE

Despite lacking depth, the Monarch men's track and field team finished third at the seven-team Mason-Dixon Conference Indoor Championship, Feb. 22, in Lexington, VA.

Frostburg State won the meet with 137.5 points and Christopher Newport took runner-up honors with 135 to Methodist's 101.5. Mary Washington was fourth at 59.5.

The Monarchs were led by high-powered performances that resulted in three individual champions Junior Bradley Hicks in the pole vault (with a school record-tying 14-6), sophomore William Ray in the triple jump (with a provisional national-qualifying 46-6 1/2) and junior Hamilton Cuthrell in the 200-meter run (with a 22.89).

Cuthrell was the lone qualifier for the NCAA-III Indoor National Championship in Oshkosh, WI, Mar. 7. Although he was unable to make the finals in the 55-meter dash, he still had the distinction of being 5-for-5 in qualifying for national competition since coming to Methodist.

MCINTYRE SETS NEW RECORD

Junior thrower Jody McIntyre launched the 20-pound weight 35-3 to win the event at the Mason-Dixon Conference Indoor Championship in Lexington, VA. The lone champion for the Lady Monarchs, McIntyre established a new school record with the throw.

As a team, the Methodist women finished fifth in the seven-team meet.

TONY BUGEJA IS HONORABLE MENTION ALL-AMERICAN

Senior kicker Tony Bugeja was named an honorable mention NCAA-III football All-American by Hewlett Packard. In dominating the kickscoring portion of the Methodist record book, Bugeja made 18 of 26 field goals and 79 of 87 extra points for his four-year career, including 26 of 26 this season.

He was ranked 28th in the nation, at NCAA-III, in field goals made per game with .70.

BLEWITT NAMED MEN'S SOCCER COACH

Adrian Blewitt has been named Methodist's men's soccer coach. The two-year neb's assistant at Lock Haven University of Pennsylvania replaces Rob

Eaton who resigned in January to take the head coaching job at Division II Lock Haven.

SOCCER FORWARD PAUL SMITH

MAKES ALL-AMERICA TEAM

Sophomore forward Paul Smith also kicked his way to All-America status, landing a spot on Umbro's Third Team NCAA-III All-America. The DIAC Player of the Year led the league in scoring, while helping the Monarchs to their eighth-straight DIAC championship.

BRIAN COLE HONORED AGAIN

Brian Cole was chosen by the Track Coaches Association as its NCAA-III South/Southeast Region Coach of the Year for men's indoor track and field. Cole directed his men's team to a #2 ranking in the region and a #14 rating in the country in the final regular season polls.

The fifth-year Methodist mentor received the honor for outdoor men's track and field the past two years.

ADAMS IS 'UNsung HERO'

Senior fullback Keljin Adams was one of 19 football players from all NCAA divisions, named to *College Football Chronicle's* 1996 Unsung Hero All-America team.

During his four-year career, Adams made his presence known not as a rushing back, but as a blocking back. He owns the program's records for the most knockdown blocks for a game (19), a season (110) and a career (405).

Senior defensive end Leon Clark was an honorable mention pick.

STYLES GOES OUT IN STYLE

December graduate Alvy Styles has been named to the Fall/Winter At-Large GTE/CoSIDA Academic All-District Team for women's soccer.

Prior to finishing her physical education degree in three-and-a-half years with a 3.96 GPA, Styles helped the Lady Monarchs to a 57-15-7 record (.766) in four years.

1997 SOFTBALL

Mar. 3	CHOWAN (DH)	2:30 p.m.
Mar. 5	at St. Andrews (DH)	2:00 p.m.
Mar. 7-9	METHODIST INVIT.	TBA
Mar. 10	URSINUS (DH)	12 noon
Mar. 18	FERRUM * (DH)	2:30 p.m.
Mar. 20	at Mount Olive (DH)	2:00 p.m.
Mar. 21	MEREDITH (DH)	2:30 p.m.
Mar. 25	GROVE CITY (DH)	2:30 p.m.
Mar. 27	at N. C. Wesleyan * (DH)	2:30 p.m.
Mar. 28	at Savannah A/D (DH)	2:30 p.m.
Apr. 2	at Fayetteville St. (DH)	3:00 p.m.
Apr. 5-6	at Ferrum Invitational	TBA
Apr. 9	AVERETT * (DH)	3:30 p.m.
Apr. 12	at Chris. Newport * (DH)	12 noon
Apr. 13	at Shenandoah * (DH)	2:00 p.m.
Apr. 19-20	at DIAC Tournament at Averett	TBA

1997 MEN'S TENNIS

Mar. 8	MARY WASHINGTON	12 noon
Mar. 10	Wisconsin-La Crosse #	12 noon
Mar. 11	Rensselaer Polytech #	8:00 a.m.
Mar. 12	Nazareth #	12 noon
Mar. 20	at Hampden-Sydney	2:30 p.m.
Mar. 22	CARNEGIE MELLON	1:00 p.m.
Mar. 23	SALISBURY STATE	2:00 p.m.
Mar. 26	at Guilford	2:30 p.m.
Apr. 5	at Chris. Newport *	10:00 a.m.
Apr. 5	Shenandoah * ^	2:00 p.m.
Apr. 6	Averett * ^	10:00 a.m.
Apr. 6	Ferrum * ^	2:00 p.m.
Apr. 10	GREENSBORO *	3:00 p.m.
Apr. 13	at Gardner-Webb	1:00 p.m.
Apr. 18	Washington & Lee in Greensboro, NC	2:30 p.m.
Apr. 19-20	DIAC Championship at Greensboro	TBA
May 9-11	NCAA-III South Regional at Emory	TBA

denotes match played in Hilton Head Island, SC
^ denotes match played at Christopher Newport

1997 WOMEN'S TENNIS

Mar. 1	FERRUM *	2:00 p.m.
Mar. 4	at St. Mary's (NC)	2:30 p.m.
Mar. 8	MARY WASHINGTON	9:00 a.m.
Mar. 9	Transylvania #	12 noon
Mar. 10	Swarthmore #	12 noon
Mar. 11	Haverford #	8:00 a.m.
Mar. 19	GREENSBORO *	2:30 p.m.
Mar. 22	CARNEGIE-MELLON	1:00 p.m.
Mar. 23	at Chris. Newport *	2:00 p.m.
Mar. 25	at Peace	2:30 p.m.
Apr. 5	Shenandoah * at Averett	11:00 a.m.
Apr. 6	at Averett *	12 noon
Apr. 11-13	NCAA-III Southeast Regional at Mary Washington	TBA
Apr. 19-20	DIAC Championship at Ferrum	TBA

denotes match played in Hilton Head Island, SC

Class Notes are taken from newspaper clippings, the alumni phonathon and your write ins. Every effort is made to report the information accurately. Because of the volume of information received, we cannot check each note. Please let us know when there is an error. Information in this issue was received by February 17, 1997. Information received between that date and May 5, 1997 will appear in the June issue. Addresses and telephone numbers are not printed except by your request.

1966

Glenn Bell's daughter, Shannon Renee married Michael Taylor March 1 in Durham, N.C. Glenn is now with Dover House Capital, LLC in Atlanta, GA.

1969

Mary Wingate Whitaker is now with Centura Bank in Charlotte as a Financial Services Officer.

1972

Rainelle Dixon Mishoe's daughter, Jessica, is Miss Hoggard High School and recently performed as a dancer in the Citrus Bowl.

1979

Lieutenant Colonel Jakie W. Snapp, Jr., one of Methodist College's first ROTC graduates, returned to his assignment in Germany after serving in war-torn Bosnia. He was the commander of the Logistics Support Element-Forward in Lukavac, Bosnia and Slavonski Brod, Croatia. He currently is with the 1st Armored Division in Bad Kreuznach, Germany.

1981

Adolph Smith has been commissioned as a Lt.j.g. in the U.S. Navy. He has been assigned to the USS Sacramento in Seattle, Wa. when he completes

Naval Chaplaincy School in Rhode Island at the end of March. Adolph and his wife, Maria Hernandez, have two children, Angelica and Wesley.

1982

Rob and Brenda McKimens Case are living in Asheville, N.C. They were expecting their third child in February. Their twin boys, Tanner and Devin, are almost 2.

1983

Walter White is a senior systems analyst at the new Customer Service Center for Carolina Power & Light in Raleigh. He and his wife, Sharon, have two children; Cameron, 5 1/2 and Cara, 4.

Major Allen Borgardts graduated from the US Army Command and General Staff College (CGSC) in May, 1996. He is currently on a one-year unaccompanied tour in the Kingdom of Saudi Arabia. He serves as the Assistant Program manager for the Saudi Infantry Corps Modernization Office. Rosalie, Alex (6), and Kelsey (4), are doing great in Kansas City, Mo. Upon completion of this tour, Allen will return to Ft. Leavenworth as an instructor in the Acquisition Dept. of the CGSC. He would love to hear from classmates at: PSC 1203, Box 1507, APO,AE 09803 or via e-mail at: borgara@cc.tacom.army.mil.

David Wentzel and his wife, Cindy, are parents of a daughter, Meghan Lee, born January 4, 1997.

1984

Jerome Smith and his wife, Leona, announce the birth of their second daughter, Hannah Caroline, born January 19, 1996. Their oldest daughter, Marian Leanna, is six. Jerome is now the pastor of Hallsboro United Methodist Church in Hallsboro, N.C.

1987

Doug Garner married Shelley Lewis December 31, 1996. Doug is in his tenth year of teaching at Broad Creek Middle School in Newport, N.C. He also coaches football and baseball, and serves as athletic director. His daughter, Taylor, is now three years old.

1988

Miranda McCall Brand and her husband, Dave, reside in Columbia, S.C. Miranda is currently an administrative intern with the Richland School District I in Columbia.

1989

Jimmy McMillan left the school system in 1995 to head the Special Activities Division of Cumberland County's Recreation and Parks Dept. Jimmy and Rhonda, his wife of 3 years, are now living in Wade, N.C. in a house he designed. They are anxiously awaiting the birth of their first child, due in July.

1Lt Matthew Hoose was temporarily assigned to Croatia in August in support of Operation Decisive Endeavor. He is responsible for air traffic control over Bosnia-Herzegovina and liaison duties with the Croatian Air Traffic Services personnel. Matt and his wife, Terri, live in Las Vegas and have been assigned to Nellis Air Force Base since 1993.

1990

Linda Eberly married John Dimino in May, 1996.

Greg Dirks was recently named Drill Sergeant of the Year for the 108th Division. He was chosen from a unit of approximately 5,000. He earned the award through competition in physical training, written exam, hands-on and an interview. Greg will now compete with all drill sergeants from throughout the country at a competition in Hampton, Va. during March.

CLASS NOTES

Jim Percherke and his wife, Candee, announce the birth of their second child, Lauren Elizabeth, November 15, 1996. Big brother, Tyler, is doing great and very proud of his new sister. They are still in rainy Washington where Jim is a field sales representative for Foot-Joy and Candee has her own business with Mary Kay Cosmetics.

Sarah Lee is working in the Follow-Up Services Dept. of Underwriters Laboratories. She received a promotion to Technical Correspondent in November.

Kenny Jones married Diane Teza December 7, 1996 in St. Peter's Catholic Church in Mount Pleasant Beach, N.J. Kenny is an accounts technician with the N.C. Dept. of Human Resources. Diane is a producer with McNeill Multi Media Inc. in Raleigh.

1991

Chris Mace and his wife, Dale, announce the birth of their son, Grant Christopher, August 25, 1996. Chris is a recipient of the N.C. Principal's Fellows Scholarship and is in school at UNC-Chapel Hill. Dale teaches at Triton High School in Erwin, N.C.

1992

Amy Currie Flaughter and her husband, Shawn, are living in Fayetteville. Shawn is a specialist in the US Army. Amy is commuting to her job as a toxicology technician at Integrated Laboratory Systems in the Research Triangle Park.

Pamela Woodell married Jeff Wood December 10, 1995. They are living in Laurinburg, N.C. where Pamela is with the Scotland County Dept. of Social Services as a daycare social worker. Jeff is also with DSS as a child support enforcement agent.

Kim Barefoot McLamb and her husband, Thomas, are expecting their

first child in March. Kim is still working as a supervisor at the Dept. of Social Services.

Macky Register married Kelly Kinlaw of Bladenboro October 26, 1996 in Bladenboro First Baptist Church. Macky is a coach with the Robeson County School System. Kelly is a registered nurse at Southeastern Regional Medical Center.

1993

Wanda Casteel has passed the CPA examination. She is also working on her master's degree in accounting at N.C. State University.

Kim Honan recently joined the Juvenile Services Division, Cumberland County District Court, as a juvenile court counselor.

Tracy Maness has been promoted to Regional Sales Manager with Automatic Data Processing, Inc. and has moved to Lexington, Ky.

Becky Lee is teaching drawing, painting and mixed media to 15 students at her home in Fayetteville. She is also preparing for a show at the Fayetteville Museum of Art.

Lynder Smith and **Carmen Serbio** '95 were married November 22, 1996 at St. Patrick's Church in Fayetteville. The event included many MC alumni in the wedding party. Lynder is with Allstate Insurance and Carmen is with Sherwin-Williams. They are living in Fayetteville.

Brian Ravenelle and his wife, Lori Ann, had their second son, Brady Michael, January 14, 1997. Brady joins big brother Drew, who turned 2 in December.

1994

Kevin Roberts married Sherri Moran September 6, 1996. Kevin recently became the head golf professional at

Val Halla Golf Course in Cumberland, Maine. Sherri is a pre-school teacher. They live in Portland.

1995

Neil Guess is presently working as a staff assistant golf professional at Marriott's Camelback Golf in Scottsdale, Az.

1996

Angela Parker is engaged to **Pete Skenteris** '97. The wedding is planned for June 8, 1997 at Saints Constantine and Helen Greek Orthodox Church in Fayetteville.

Jeremy Sachs is currently working for C. Lloyd Johnson Co., Inc. - one of the largest military brokers in the world. He is a district manager for the commissary division in the Northeast region and includes northern Va. Best wishes to the Class of 1996!

Keith Hicklin announces his engagement to **Julie Jones** '97. Keith is now working as a golf professional at Foxfire Resort in Jackson Springs, N.C. Julie is a senior education major at Methodist.

Shannon Jinkens is working for Moore County Dept. of Social Services as a Social Worker II in Adult Services. She and **Jamie Sykes** '93 are engaged and will be married April 5, 1997. Jamie is teaching 7th grade and coaching football at Lewis Chapel Jr. High School in Fayetteville.

David Eavenson and **Jennifer Hersey** were married January 13, 1997. Dave is currently the assistant wide receivers coach at Penn State University.

Jodie Young married Paul Bailey November 23, 1996 at Culbreth Memorial United Methodist Church in Fayetteville. Jodie is teaching at Northwood Temple Academy. Paul is in the United States Army, stationed at Fort Bragg.

CAMPUS CALENDAR

APRIL	1	Pastors' Day Lectures by Dr. James Efird of Duke Divinity School. 10 a.m. & 1:30 p.m., Hensdale Chapel	20	<i>Camping With Henry And Tom</i> , 2 p.m., O'Hanlon Amphitheater
			22	Methodist College Chorus Concert, 8 p.m., Reeves Auditorium
	8	Methodist College Stage Band Concert, 8 p.m., Reeves Auditorium	26	Angela Marthell's Senior Art Exhibit, Opening Reception, 7-9 p.m., Mallett-Rogers House, Exhibit runs through May 12
	10	North Carolina Symphony Concert, 8 p.m., Reeves Auditorium	27	Cumberland Oratorio Singers Concert, 3 p.m., Reeves Auditorium
	12	Family Weekend	MAY	Reception /Book Signing for Mrs. Pauline Longest, 3 p.m., Alumni Dining Room, Berns Student Center
	13	Senior Voice Recital by Travis Kornegay (tenor), 3 p.m., Reeves Auditorium	4	Baccalaureate, 10:30 a.m., Guest Speaker: Bishop Marion Edwards
	17	Annual Stock Market Symposium, 6 p.m., Charlie Rose Agri-Expo Ctr.	11	Commencement, 2 p.m., Guest Speaker: Jerry Richardson
	17-19	MC Theatre Dept. presents <i>Camping With Henry And Tom</i> , 8 p.m., O'Hanlon Amphitheater		
	19	Fayetteville Symphony Concert, 8 p.m., Reeves Auditorium		

For details call 630-7004. This calendar is subject to change

WHAT'S NEW WITH YOU?

College faculty, administration, and alumni enjoy reading about MC alumni in the "Class Notes" pages of METHODIST COLLEGE TODAY. If you would like to share some good news (marriage, births, promotion, civic or professional honor) please return this form.

ALUMNI NEWS
(Please include Name and Class Year)

CHANGE OF ADDRESS

Name _____ Class _____

New Address _____

Effective Date _____ Phone _____

Send your news or change of address to: Alumni Office,
Methodist College, 5400 Ramsey St., Fayetteville, NC 28311

ANNOUNCING THE SUMMER SEMESTER

Day Term I
May 19—June 6,
1997

Day Term II
June 16—
July 11, 1997
(July 4—Holiday)

Day Term III
July 15—Aug 11,
1997

EVENING COLLEGE

Summer Term IV
May 26—July 18,
1997

Phone
(910) 630-7036
or
1-800-488-7110
for a schedule of
summer classes.



Members of the men's basketball team celebrate their Dixie Conference championship at N.C. Wesleyan March 1.

VISIT MC'S WEB SITE AT
<http://www.apcnet.com/Methodist/Methodist.html>

FOR ADMISSION INFORMATION, CALL 1-800-488-7110

METHODIST COLLEGE
5400 RAMSEY ST
FAYETTEVILLE, NC 28311-1420

ADDRESS CORRECTION REQUESTED