

# TODAY

METHODIST COLLEGE

FOR FRIENDS OF METHODIST



COLLEGE, FAYETTEVILLE, NC



## INSIDE:

Terry Sanford,  
Executive-In-  
Residence,  
MCAA Directors,  
Alumni  
Missionaries,  
1992 Annual  
Giving Report,  
Sports Report

◀ **LILI  
(BETH SURRIDGE)  
AND FRIENDS  
REHEARSE A SCENE  
FROM THE SPRING  
MUSICAL CARNIVAL.**

Vol. XXXIV, No. 1, April 1993

*Methodist College Today* (USPS 074-560) is published four times a year (April, August, September, and November) as a service to members of the Methodist College community and Methodist College alumni by the Public Relations Office and the Alumni Office of Methodist College, 5400 Ramsey Street, Fayetteville, NC 28311. Second Class postage paid at Fayetteville, NC 28302-9614. Postmaster: Send postage changes to:

**METHODIST COLLEGE TODAY**

5400 Ramsey Street  
Fayetteville, NC 28311-1420

**Alumni Association Officers/Directors**

Roger Pait '85, *President*; Patric S. Zimmer '89, *First Vice President*; Janet Mullen '72, *Second Vice President*; Joan Pait '91, *Secretary*; Mark Kendrick '83, *Third Vice President*.  
*Directors:* Johnny Lipscomb '68, Lynn Carraway '71, Coleen Shaw Doucette '74, Julie Madison '82, Nona Fisher '88, Brenda McKimmons '89, Cynthia Walker '65, Jerry Monday '71, James Malloy '78, Jerry Cribb '81, Kathryn Offenhauser '87, Sharon Weeding '90, Jerry Keen '65, Larry Philpott '73, Betty Jo Dent '77, Kathy Stewart '81, Randy Egsegian '84, Lisa Milligan '89.  
*Immediate Past President:* Ray Gooch '72.

**Administrative Officers**

Dr. M. Elton Hendricks, *President*; Dr. Erik J. Bitterbaum, *Vice President for Academic Affairs*; Mr. Gene Clayton, *Vice President for Business Affairs*; Dr. William P. Lowdermilk, *Vice President for Church and Community Relations*; Mr. Beverly S. Pankey, *Vice President for Development*; Mr. Michael W. Safley '72, *Vice President for Student Affairs*.

**MC Today Staff**

Bill Billings '68, *Editor*  
Caroline Parsons, *Assistant Editor*  
Sylvia Williams, *Sports Editor*  
Kim Honan, *Typographer*  
Bill Billings, *Photographer*

*Methodist College Today* is produced with PageMaker software on a Macintosh Plus computer. Printed by Alliance Press, Fayetteville, NC. Circulation: 11,000 copies.

*Methodist College does not discriminate on the basis of age, race, sex, national or ethnic origin, religious denomination, or disabilities for otherwise qualified persons in the administration of its admission, educational policies, scholarships, loan programs, athletics, employment, or any other college-sponsored or advertised programs.*

# TERRY SANFORD RECEIVES NAICU ADVOCACY AWARD

The National Association of Independent Colleges and Universities presented its first annual Award for Advocacy of Independent Higher Education to Dr. Terry Sanford February 4.

Dr. Sanford, an original trustee of Methodist College, received the award at NAICU's annual meeting in Washington, D.C. The award recognizes an individual outside academe who has championed the cause of independent higher education in the United States.

The honoree is still remembered as the "education governor" of North Carolina (1961-65)—the man who proposed an unpopular tax to improve public schools, created the North Carolina School of the Arts, and established the state's community college system. He was also the author of an innovative legislative program which provides grants and scholarships to Tar Heel youths who attend independent colleges and universities.

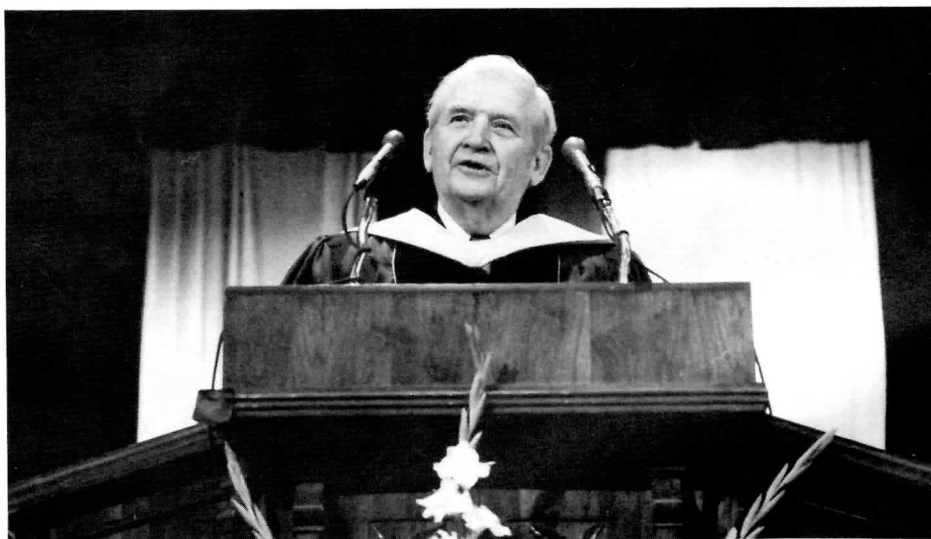
Terry Sanford was elected the first chairman of the Methodist College Board of Trustees in 1956. As a Fayetteville attorney, he led the citizens group which persuaded the N.C. Conference of the Methodist Church to build a college in Fayetteville. He has been a trustee

continuously, for the last 36 years. In 1981, Methodist College awarded him an honorary Doctor of Law degree.

As a U.S. senator from 1986-92 and president of Duke University from 1969-85, Terry Sanford found innovative ways to address national and international problems. In the U.S. Senate, he led efforts to reform the federal budget-making process. At Duke he established the Institute of Policy Sciences and Public Affairs. He recently accepted a part-time teaching post at Duke.

Dr. Sanford has written three books and worked tirelessly on behalf of disabled and disadvantaged children, national parks, states' rights, and at least eight different private institutions of higher learning. He chaired the American Association of Independent Colleges and Universities from 1980-81 and the N.C. Association of Independent Colleges and Universities from 1978-80.

A native of Laurinburg, NC, Terry Sanford attended Presbyterian Junior College (Maxton) and earned his bachelor's degree from UNC at Chapel Hill. He earned his law degree from the UNC School of Law.



▲ TERRY SANFORD DELIVERS THE COMMENCEMENT ADDRESS AT METHODIST MAY 7, 1989.

—PHOTO BY BOB PERKINS

## DAVID WILSON JOINS FACULTY

David G. Wilson, retired president of Fasco Consumer Products in Fayetteville, was recently appointed Executive-in-Residence by the Reeves School of Business at Methodist College.

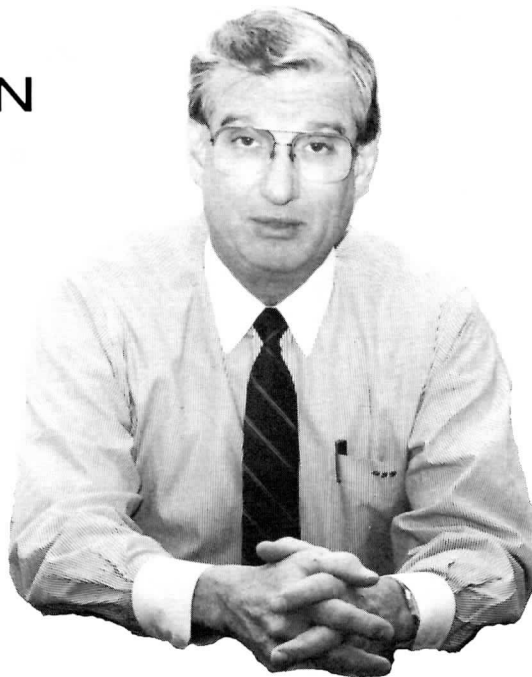
"The Reeves School of Business and Methodist College are fortunate to be able to offer their students access to such an outstanding business executive and community leader as David Wilson," said Joe Doll, director of the Reeves School.

David Wilson was president of Fasco from 1981-92. In 1988, he was named Business Person of the Year by Methodist's Center for Entrepreneurship. He is a member of Methodist's Board of Visitors, former chairman of the Cumberland County Library Board of Trustees, and former chairman of the Fayetteville Technical Community College Foundation Board.

A graduate of Virginia Tech, Mr. Wilson is team-teaching Business 341, "Principles of Management" with Joe Doll. The former CEO is also developing a special course in "Business Transitioning" for Fall '93 and serving as coordinator of the Executive Speaking Series.

Business 341 covers topics such as business ethics, history of business management, management organization, and strategic planning. Mr. Wilson alternates teaching days with Mr. Doll. He said he enjoys teaching, but finds it "very demanding in terms of preparation time."

The former Fasco executive has a wide range of interests. He visited Russia in November and attended a recent Emerging Issues Forum in Raleigh, at which U.S. Secretary of Labor Robert Reich discussed President Clinton's economic reform plans. He is a trustee of the Fayetteville Museum of Art and a member of McPherson Presbyterian Church. His hobbies include: fishing, boating, reading,



travel, and motorcycling.

Methodist's Executive-in-Residence tends to favor a democratic versus autocratic management style. "The greatest challenge facing U.S. business managers today," he said "is how to empower employees and give them a role to play in running the company and making decisions."

## SPRING ENROLLMENT TOPS 1,500

Methodist College began the Spring '93 semester with a total enrollment of 1,549, for an increase of 9 percent over Spring '92.

Day enrollment totalled 987, up 8 percent from last spring's 912. Enrollment in Spring Term I of Evening College was 562, up 23 percent from last spring's 456. The number of students living in the residence halls is 470, compared to 440 in Spring '92.

The college enrolled an additional 141 students in its two-week Interim Term Jan. 4-15. Enrollment in the second annual Interim Term exceeded that for December, 1991 by 137 percent.

Methodist's Fall '92 enrollment was 1,445. Of that number, 1,080 enrolled in the regular day program (the largest number ever) and 365 enrolled in the Evening College.

Methodist College has received 676 applications for Fall '93, 59 percent more than the 425 received by this time last year.

## LOCAL GIVING UP 70 PERCENT

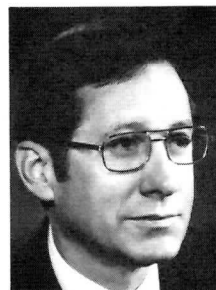
Early receipts from the Methodist College foundations 36th annual Community Loyalty Campaign indicate that local support for the college is growing.

At the end of Loyalty Day—February 16, Cumberland County residents had contributed \$85,795. That was 70 percent more than the \$50,340 received at the same point in 1992. The foundation's goal for 1993 is \$200,000.

Bob Exum, secretary/treasurer of VanStory-Exum Insurance Agency, is chairing the 1993 campaign and directing a team of 105 volunteer fund-raisers.

Dick Player, president of Player, Inc., chaired the 1992 Loyalty Fund Drive.

That drive raised \$237,781 from 728 contributors, exceeding the foundation's goal of \$175,000 by 35 percent.



▲ **BOB EXUM**

## MC, MADERO TO EXCHANGE STUDENTS

Methodist College and Madero University in Puebla, Mexico have entered an exchange agreement that will allow foreign students to enroll for one semester at the host institution.

Dr. Arnal Guzman, associate professor of Spanish, is the program coordinator for Methodist College. Under the agreement, tuition and fees will be charged by the "home" institution. Housing and meals will be arranged by the "host" institution.

Exchange students will be responsible for transportation, personal expenses, and health insurance.



# WRITERS' DAY DRAWS 180 HIGH SCHOOL STUDENTS

One hundred-eighty high school students attended the Methodist College English Department's second annual Writers' Day February 1.

Students attended writing workshops in five genres and heard readings by guest writers/instructors Phil Gerard of UNC-Wilmington, Robin Greene of Methodist College, and Tim McLaurin of UNC-Chapel Hill.

Mr. Gerard read a short story entitled



▲ PHIL GERARD

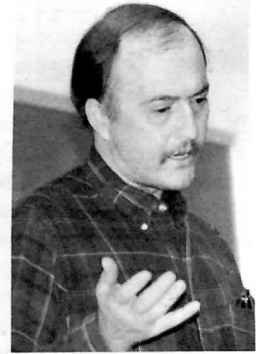
"O, Canada." Ms. Greene read six of her poems. Mr. McLaurin read from his novel *The Acorn Plan* and from *Keeper of the Moon*, an autobiographical, non-fiction work. The guest writers also answered several questions posed by the students.

Dr. Robert Christian, professor of English, presented certificates and cash awards to the following student winners of Writing Excellence Awards:



▲ ROBIN GREENE

Fiction - Ben Johnson, Union Pines High School  
 Magazine Writing - Jonathan Hart, Hale High School  
 Business Writing - Misty Hoover, Seventy First High School  
 Screenwriting - Chainé Masbruch, Union Pines High School  
 Poetry - Christy Medlin, Scotland High School.



▲ TIM McLAURIN



▲ STUDENTS REACT AS TIM McLAURIN READS FROM *KEEPER OF THE MOON*—ABOUT THE AWKWARDNESS OF HIS 'FIRST DATE.'

## HARPSICHORD

Methodist College will dedicate its new harpsichord Saturday, April 17. The instrument was made possible by a challenge grant of \$2,500 from the Florence Rogers Charitable Trust and individual gifts totalling \$2,500.

Mrs. Lynda Beard, administrative assistant to the vice president for academic affairs, wrote the grant proposal. The Development Office raised the balance in a direct mail solicitation. Mrs. Beard and Dr. Mary Frances Boyce, instructor of music, assembled and finished the instrument, which was shipped to the college in kit form.

President and Mrs. Hendricks will host a reception and dinner for members of the trustees, alumni board, board of visitors, college foundation and donors to the harpsichord project. A dedication ceremony/recital will follow in the Alumni Dining Room, Berns Student Center.

The new harpsichord will also be featured during the Methodist College Chorus's spring concert Sunday afternoon, April 25. Mrs. Jane Weeks Gardiner, associate professor of music, will accompany the chorus in a performance of Bach's Cantata No. 106, "God's Time Is the Best Time."

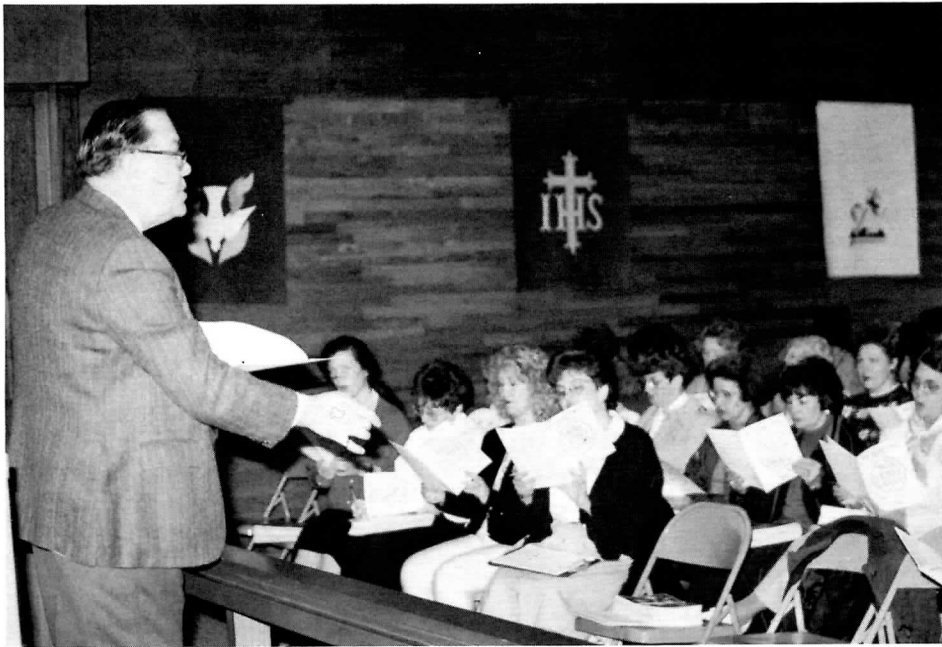
In the future, the harpsichord will be used as a solo instrument by the piano faculty and as a chamber music instrument by the Methodist College Chamber Music Ensemble.

## REEVES SCHOOL OF BUSINESS ADDS PROGRAMS

The Reeves School of Business at Methodist College will add new degree programs in finance/economics, health care administration, and fashion merchandising/retail management this fall.

Joe Doll, director of the Reeves School of Business, said the new programs were approved by the college faculty February 26. For more information, contact Mr. Doll (630-7046).





▲ **WALTER EHRET, NATIONALLY RENOWNED MUSIC EDUCATOR, DIRECTS AREA CHORISTERS AT A FEB. 20 WORKSHOP IN HENSDALE CHAPEL. THE EVENT WAS SPONSORED BY THE CAPE FEAR CHAPTER, AMERICAN GUILD OF ORGANISTS.**



▲ **MEMBERS OF EMMAUS WALK, A SPIRITUAL DEVELOPMENT GROUP, SING HYMNS DURING A MEETING JAN. 23.**

## CLERGY FRIENDS ASSOCIATION ESTABLISHED

A Clergy Friends Association of Methodist College has been established. The Association consists of thirty-six ministers in the North Carolina Conference.

The membership is inclusive as to race, sex and age. Also, the membership will consist of ministers serving rural, urban, station and multi-church charges.

The formation of the Association was approved by the Methodist College Board of Trustees February 4, when Reverend Bill Sherman submitted the proposal on behalf of the Church and Community Relations Committee of the Board of Trustees.

The purpose of the Association is to orient the Association members to the mission and opportunities of Methodist College, assist in identifying and securing support for the present and future programs of the college, assist the college in accomplishing long-range plans, and make recommendations for the enrichment of the college.

Bill Lowdermilk, Vice President of Church and Community Relations, commenting on the Association, said, "This has been a dream for some time. I am pleased to see it become a reality. I

believe many students will benefit from this Association, and I am confident that the College will be greatly enriched by it."

Mr. Sherman said, "This action puts the college on the cutting edge of new

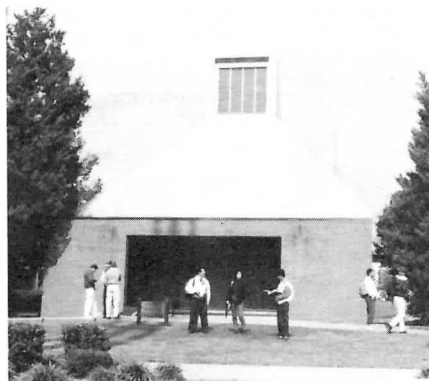
opportunities and all of us who care about Methodist College see it as a very positive step."

The first meeting of the Association will be held this spring.

## CHAPEL RENOVATION

New generations of students call for innovative ways to meet their spiritual needs.

In response to where our current students are in their worship perspective, we want to replace the pews in Hensdale Chapel with oak chairs. This change will allow us to have a variety of worship settings, such as worship in the round, to move the altar to the center of the chapel, and to reverse the



altar setting to the south wall for lighting effects.

We are asking you to help in this project by making a gift of one hundred dollars. We hope to purchase 150 chairs, carpet the chapel, and secure a plaque listing the donors or persons being memorialized or honored, if the gift is so designated.

We hope you will join in this effort to respond to the worship needs of our current students.

# ALUMNI BOARD ELECTS DIRECTORS, APPROVES PLANS

The Board of Directors of the Methodist College Alumni Association elected eight new directors and filled several vacancies at the group's winter meeting January 30. The board also approved action plans presented by the Chapters, Finance, and Homecoming committees.

Janet Mullen '72, vice president and chairman of the Nominations Committee, presented a lengthy slate of nominees for six board seats. After written ballots were tabulated, Mrs. Mullen announced that the following had been elected to three-year terms: Jerry Keen '65, Larry Philpott '72, Betty Jo Dent '77, Kathy Stewart '81, Randy Egsegian '84, and Lisa Milligan '89.

The board elected the following to fill vacancies created by resignations: Mark Kendrick, third vice-president; Joan Pait, secretary; and directors—Julie Madison '82, Brenda McKimmons '89, James Malloy '78, Kathryn Offenhauser '87, and Sharon Weeding '90. Cal Violette '84 was elected chairman of the Special Events Committee.

Jerry Monday, chairman of the Chapters Committee, presented several recommendations for board consideration. They included creating a Fayetteville area chapter, identification of potential chapter leaders in three or four key areas (Fayetteville, Raleigh, Charlotte, Richmond),



▲ MCAA PRESIDENT ROGER PAIT PRESIDES AT THE WINTER BOARD OF DIRECTORS MEETING.

and sponsoring at least two social gatherings annually (not directly related to fund-raising) in each area.

Director of Alumni Affairs Caroline Parsons said her office would be able to generate lists of alumni by geographic areas within the next few months. The board accepted the committee's recommendations, but changed the wording of one phrase in order not to exclude fundraising from chapter concerns. At the suggestion of Cynthia Walker, it was agreed that green and gold postcards would be printed for sending notices of chapter meetings.

Patric Zimmer, chairman of the Finance Committee, said his group had three main goals for 1993: 1) assist with the Annual Fund Drive in Cumberland County (Larry Philpott will be a Team Captain) 2) provide volunteers for the Alumni Phonathon in March (Phil Mullen will be the alumni liaison), and 3) sponsor an Alumni Golf Tournament at Homecoming.

Kathryn Offenhauser, chairman of the Homecoming Committee, outlined events to be held at Homecoming Oct. 9. The theme will be "A Midsummer Night's Dream." She said Barbara Hogge had agreed to coordinate the alumni golf tourney.

Mrs. Offenhauser reported that the tailgate party (lunch), Teacher Alumni Association breakfast, and alumni party (dance) would be continued, but that no Sunday events would be held. She said "phone trees" will be used extensively to invite members of the reunion classes to return to campus.

Mrs. Caroline Parsons and V.P. for Development Bev Pankey briefed the board on Annual Fund advance pledges and the effort to raise \$500,000 for the new tennis and golf learning center.

After MCAA President Roger Pait adjourned the meeting, officers and board members attended a luncheon at the president's home.



▲ ALUMNI DIRECTOR LYNN CARRAWAY '71 CHATS WITH DR. HENDRICKS, DURING LUNCH AT THE PRESIDENT'S HOME.

## CORRECTION

In the November '92 issue of *MC Today*, the name of Kathryn S. Offenhauser '87 was inadvertently omitted from a caption under the picture of alumni who joined the Methodist College Endowment Society.



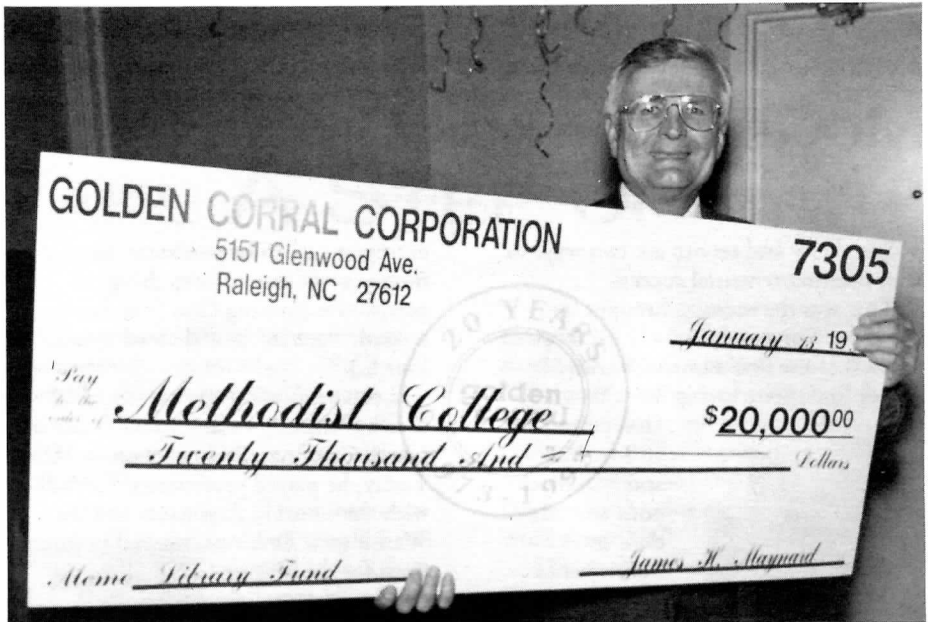
## GOLDEN CORRAL PRESENTS 20TH ANNIVERSARY GIFT TO COLLEGE

Officials of the Golden Corral Restaurant chain held a 20th anniversary party Jan. 13 in Fayetteville and presented Methodist College with a \$20,000 gift.

In 1973, co-founder Jim Maynard used the Methodist College Library as his office, while developing plans for the first Golden Corral on Bragg Boulevard.

In appreciation of the college's hospitality, Maynard presented President Hendricks with a \$20,000 check for Davis Memorial Library.

Director of Library Services Susan Pulsipher said the gift would be used toward computerizing the card catalog, for new shelving, and for buying new journals to support new curricula.



▲ PRESIDENT HENDRICKS HOLDS CHECK, PRESENTED AT GOLDEN CORRAL'S 20TH ANNIVERSARY PARTY IN FAYETTEVILLE.

—PHOTO BY CRAMER GALLIMORE

## THEATRE DEPT. PREMIERES PLAY BY JACK PEYROUSE

The Methodist College Theatre Department will premiere an original play entitled *The Will of R.D. or He Loves His Shakespeare As His Life* April 1-4.

Written by Dr. Jack Peyrouse, professor of theatre and speech, the play chronicles life on the stage as experienced by Shakespearean actor R.D. MacLean from 1887-1945.

The play gives the audience a backstage glimpse of both classic drama and the trials of being an actor. All events and characters are based on facts gleaned from extensive research by Dr. Peyrouse.

The play stars Robert Bloodworth as R.D. MacLean, Edwina Lindsay as actress Marie Prescott (R.D.'s first wife), and Susan Paschal as actress Odelle Taylor (R.D.'s second wife). Mary Rowland is directing the play and Paul Wilson is the set designer.

The production features R.D. and Company in scenes from the following dramas: *Secret Service*, *The Heart of Maryland*, *The Mission Play*, *The Taming of the Shrew*, *Julius Caesar*, *As You Like It*, *School for Scandal*, and *Romeo and Juliet*.

*The Will of R.D.* will be done on-stage, backstage in Reeves Auditorium Friday-Sunday nights at 8 p.m. and Sunday at 3 p.m. Reservations are required, due to limited seating. Admission is \$4 for adults and \$2 for students and senior citizens.

R. D. MacLean was born in New

Orleans in 1859. He became an avid reader of Shakespeare during his teen years in Shepherdstown, West Virginia. He attended the College of William and Mary and the University of Virginia. MacLean was 20 years old when he made his acting debut as Brutus in *Julius Caesar*. He formed his own touring company in 1886 and spent a total of 36 years performing

on stage and in films. He received an honorary doctorate from the University of Southern California in 1928.

In 1891, R. D., was quoted as saying, "The Bible is the foundation of religion, and Shakespeare is the foundation of the stage. Take away the Bible and I would repudiate religion: take away Shakespeare and I would renounce the profession."



▲ FACULTY MEMBERS BOB BLOODWORTH AS R.D. MACLEAN AND SUSAN PASCHAL AS ODELLE TAYLOR REHEARSE A SCENE FROM *THE WILL OF R.D.*



AT REEVES ENTREPRENEURSHIP LUNCHEON

# McCUNE, BLACK SHARE SECRETS OF SUCCESS

Simplicity and service are two ways to achieve entrepreneurial success.

That was the message brought by David McCune and Leonard Black, guest speakers at the first annual Charles M. Reeves Entrepreneurship Luncheon

December 7.

Mr. McCune and Mr. Black both started their own businesses in Fayetteville.

McCune Technology, a sheet metal fabrication firm, was founded 17 years ago; its first product was



▲ LEONARD BLACK

a rear window louver for a Datsun 280-Z.

"You have to have an idea to make money," said Mr. McCune. "Then you produce the product and advertise it." (He advertised his rear window louver in *Auto Week* magazine.)

Mr. McCune said it's important to "keep your product and your appeal simple." He also advised aspiring

entrepreneurs to be persistent, to give money away, and to keep things in perspective (putting God first, family second, work third, and social interaction fourth.)

Leonard Black owns a chain of 15 health clubs known as Fitness Today of North Carolina. Prior to opening Fitness Today, he played professional football with the Toronto Argonauts and the Washington Redskins, worked in promotions for the Hagger Co., and operated a sports promotion firm.

"Good service is important" says Black. "I make my money on repeat business. Even in manufacturing, you have to be service-oriented. Fitness Today is a family-oriented operation."

Mr. Black recalled a universal challenge once put to him by the coach of the L.A. Rams: "God gave us all the ability to do something. We just have to learn what that is." He concluded his remarks by saying, "If you have an idea, pursue it."

Joe Doll, director of the

Reeves School of Business, offered a final observation as he closed the first entrepreneurship luncheon, "Every entrepreneur I've known has a vision, plus the guts and determination to follow through."

Mr. Doll announced that the Reeves School of Business and the Center for Entrepreneurship would stage a second entrepreneurship luncheon on April 26, 1993. "In the future, we would like to hold one each semester," he said.



▲ DAVID McCUNE SHOWS A MIATA TRUNK SHIELD TO JAY WOODARD AND JOE DOLL.

## PRESIDENT APPOINTS STRATEGIC CONCEPTS COMMITTEE

Methodist College President Elton Hendricks recently appointed a Strategic Concepts Committee to assist in the development of long-range plans for the college.

Dr. Hendricks told the faculty February 19 that the committee would meet two hours per week for the remainder of the spring semester. He said the committee would consist of: himself as chairman, Dr. Erik Bitterbaum, vice president for academic affairs; Gene Clayton, vice president for business affairs; Alan Coheley, director of enrollment services; and faculty members Joe Doll, Jane Gardiner, and Emily Seamon.

"We want to have some recommendations for the trustees to consider at their

planning retreat June 4-6," said Dr. Hendricks. He said he would ask the committee to consider the following questions:

- 1) What should our optimum enrollment be?
- 2) What kind of academic programs should we have?
- 3) What priorities should be given to new funds raised by the college?
- 4) What are the pros and cons of changing the name of Methodist College?

Dr. Hendricks also briefed the faculty on a projected student housing shortage for Fall '93 and listed four options he had given the trustees for dealing with the problem. The options are:

- 1) Do nothing
- 2) Lease or purchase apartments near the campus.
- 3) Renovate the back row of 12 two-bedroom apartments on campus to accommodate 48 students who cannot be housed in the residence halls.
- 4) Build new residential units—3,000 square feet of "cluster housing" to accommodate 50 students.

The college would need to borrow an estimated \$810,000 to construct the housing, but would net about \$236,000 in 1994-95 from 50 additional resident students.

The president said the trustees would have to approve new housing in May 1993 for new units to be ready by Fall 1994.

# JIM & BONNIE BLANTON

## TAKE A STEP OF FAITH

The last year has been very rewarding for Jim Blanton '67 and his wife Bonnie.

In December, 1991 the Blantons were accepted as missionaries by the South American Missionary Society. After two months of training in Detroit and four months of fund-raising in the South Carolina Diocese of the Episcopal Church, they were sent to Honduras.

Jim is now the chief administrator (superintendent) of the Holy Trinity Episcopal School in La Ceiba, Honduras. His wife Bonnie is an English/Christian education/music teacher at the school, which serves 270 youngsters in grades K-6.

The Blantons took leave in November and came home for their son's wedding and their grandchildren's baptism. While they

were in Fayetteville they visited Methodist and were interviewed for this article.

"On December 31, 1991 we moved out of our home in Marion, South Carolina," recalls Jim. "We pulled out our teacher retirement and lived 'on the road' until June. We took a step of faith."

As part of their commitment to the Missionary Society, the Blantons were required to raise \$110,000-115,000 in pledges to underwrite a three-year tour. That meant they had to approach church members in their home diocese for financial support. The Blantons receive a minimal salary, plus room and board.

"We were members of the Church of the Advent in Marion," said Jim "Ours is a missionary diocese."

"We spoke at different churches and stayed with church members. We promoted mission awareness in some churches where they know nothing about it. These were six of the best months of our lives."

The missionary society sent Jim and Bonnie to visit four different Honduran schools in April. "We thought we were going to Tela," said Jim, "but when we got to La Ceiba, we knew that's where we belonged.



▲ BONNIE AND JIM BLANTON POSE DURING A NOVEMBER VISIT TO FAYETTEVILLE AND MC.

They said they had been praying for a missionary for two years."

One of Jim's first tasks was to hire a new "directora" (principal)—a Honduran—to replace a woman who was retiring after many years at the school. "The parents and townspeople have been very supportive," he said. "Holy Trinity is one of the oldest schools in town. Many civic leaders and businessmen went there."

La Ceiba is a small town, where the largest employer is Standard Fruit Co. (Dole), grower of bananas, grapefruit, and

pineapple. "Most of our students come from agricultural families," said Jim. "There are no enforced attendance laws. When they leave our school, most students go to the 'instituto' (middle school, grades 7-8) and then the 'collegia' (high school). But a lot of youngsters start work at age 12."

Like most parochial schools, Holy Trinity has a church sanctuary on the school grounds.

As superintendent, Jim is responsible for both the financial and the academic aspects of the school. He supervises a staff of 22. The school year begins in February and ends in November. The school day lasts from 7:30-4. Government-required

assemblies are held on Mondays and there is one chapel service a week.

When Jim arrived at Holy Trinity, he found the school lacked blackboard erasers and other basic educational tools. "One of my first tasks was to set long-range goals and clarify the purpose of the school," he noted. "I've used everything I've learned through experience on this job. We want to create an excellent Honduran school. We figure it will take about 10 years to achieve our long-

range goals."

The Blantons' grown children have been very supportive of their parents' decision to become missionaries. "They see this as an opportunity for us to witness," said Bonnie. "We felt a real calling to this work and we feel the Lord is with us."



▲ HONDURAN CHILDREN CELEBRATE LEMPIRA DAY AT HOLY TRINITY EPISCOPAL SCHOOL.

# DUKE FACULTY STAGE PLAY BY LOCAL JOURNALIST

John Merritt, a retired Fayetteville newspaper editor and former Methodist College student, received a special honor in December, when Duke University faculty members presented a staged reading of his play *Crisis at Trinity*. Trinity refers to Trinity College in Durham, the forerunner of Duke University.

Mr. Merritt's play concerns academic freedom. It is based on the 1903 Bassett case, in which a Trinity College history professor, Dr. John Spencer Bassett, was pressured to resign after writing an article stating that blacks would someday have equality with whites.

A private reading was given by Duke faculty December 12 in Sheaffer Theater, Bryan Center. The reading was staged for trustees and invited guests as part of Founder's Day activities. By coincidence, a bust of Dr. Bassett was unveiled in the Rare Book Room of the Duke Library earlier in the day.

In the fall of 1903, Dr. Bassett wrote an article for the *South Atlantic Quarterly*, supporting political equality for blacks and criticizing white supremacists in the Democratic Party for stirring the fires of racial hatred. The professor was immediately vilified by the editor of *The (Raleigh) News and Observer* and other newspaper editors for insulting white Southerners. Several editors demanded Dr. Bassett's resignation.

Dr. John Kilgo, the president of Trinity College, leaders in the Methodist Church, and the Trinity trustees were pressured to fire Dr. Bassett. Dr. Bassett submitted his resignation, but the Trinity trustees voted 18-7 not to accept it and the professor remained at Trinity for another four years.

John Merritt first learned of the Bassett case while he was a student at UNC in the late 1940's. Joe Morrison, a journalism instructor at UNC, lectured about it.

"This incident was pivotal in Southern history," said Mr. Merritt. "It not only affirmed the principle of academic freedom, but also foreshadowed a change in the attitudes of Southern whites toward blacks. I grew up in Durham and heard many stories about Trinity College and

the Duke family."

Mr. Merritt wrote the play over a five-year period beginning in 1984. In 1988, he took a playwriting course at Methodist College taught by Stephen Miles. He showed Miles a revised draft of the play, which then totalled 200 pages. He subsequently enrolled in another creative writing course and a North Carolina history course at Methodist. He said Dr. Michael Colonnese, his creative writing



**DR. JOHN SPENCER BASSETT WAS BORN IN TARBORO, NC IN 1867. HE GRADUATED FROM TRINITY COLLEGE (NOW DUKE U.) AND EARNED A DOCTORATE IN HISTORY FROM JOHNS HOPKINS U. THE FOUNDER OF THE SOUTH ATLANTIC QUARTERLY TAUGHT AT TRINITY COLLEGE AND SMITH COLLEGE AND AUTHORED SIX MAJOR BOOKS ABOUT U.S. HISTORY.**

instructor, taught him "a tremendous amount about writing and editing."

"The play required a lot of research," said Mr. Merritt. "I used books from Davis Library at Methodist College, archives at Duke and in Raleigh, and newspaper accounts of the incident."

In 1991, Mr. Merritt's efforts were rewarded when the first act of his play was read at the North Carolina Playwrights Festival at UNC-Greensboro.

Early last year, Mr. Merritt sent a copy of his play to a journalist friend, Roland Giduz of Chapel Hill. Mr. Giduz liked the play and passed it on to Dale Randall, professor of English and romantic literature at Duke. After reading the play, Dr. Randall contacted Mr. Merritt and asked his permission to present a staged reading before Duke's Board of Trustees.

Dr. Randall and Yussef El Guindi, Duke playwright in residence, suggested some revisions and Mr. Merritt cut the play from three acts to two. Dr. John Clum, professor of English and theater, directed the play, casting fellow faculty members in the key roles. Following the actual reading, Dr. Robert Durden, professor of history, praised the historical accuracy of the play and led a discussion.

The play describes a special meeting of the Trinity College Board of Trustees—held Dec. 1-2, 1903—at which the Bassett case was discussed. Mr. Merritt used

some fictional characters and some real ones. Actual statements from those involved in the case are woven into the play.

U.S. Senator Folney Coleman, a fictional Democratic senator from North Carolina, and Dr. John Kilgo, the actual president of Trinity, square off in a heated debate which exposes the hate and intolerance for blacks felt by many North Carolinians. Dr. Kilgo offers a rigorous defense of Dr. Bassett, while dismissing the lynch-mob invective of some newspaper editors.

Although Mr. Merritt has the trustees voting 5-4 (with the chairman breaking a tie) not to accept Dr. Bassett's resignation, the play is historically accurate in all other respects.

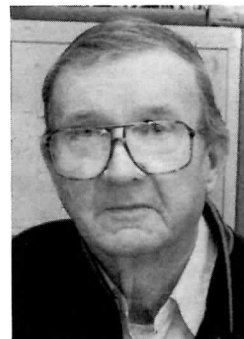
Ironically, Duke officials forgot to invite Mr. Merritt to the reading. But several of Merritt's Durham friends did attend and pronounced it a success. In a subsequent letter to Mr. Merritt, Dr. Clum wrote, "There is strong feeling that this should be an annual event...there is no doubt that *Crisis at Trinity* was a crowd pleaser...Thanks for writing such an important script."

Mr. Merritt, who describes himself as "a young 70," recently sent a copy of his play to the UNC School of Journalism and Mass Communication. The playwright feels strongly that the issues of academic freedom and racism raised by the Bassett case are still worth discussing, particularly in North Carolina.

## ABOUT MR. MERRITT:

After graduating from UNC in 1949, John L. Merritt began a 34-year career as a newspaper editor. He worked for the *Durham Morning Herald*, the *Greensboro*

*Daily News*, and finally *The Fayetteville Observer*.



After retiring in 1984, he took a variety of courses at Fayetteville Technical Community College and at Methodist College.



FOR BUSH, QUAYLE

# BRUCE PULLIAM GOES TO COLLEGE

By Scott Yates

© The Fayetteville Observer Times

December 17, 1992

It may not count for much, but Fayetteville resident Bruce Pulliam on Monday got to vote one last time for George Bush and his distant cousin—Dan Quayle.

Mr. Pulliam is a member of the Electoral College from North Carolina, which Mr. Bush carried in the November general election.

Because of that, Secretary of State Rufus Edmisten invited the state's 14 Republican Electoral College members to a formal ceremony in Raleigh to cast their ballots.

Mr. Pulliam, 69, a retired history and political science teacher, said the results of the presidential election won't be official until Congress meets in January and Mr. Quayle reads the Electoral College ballots from across the nation.

Mr. Pulliam said he enjoyed being part of the process.

"There were some very good speeches made, and it was a very formal ceremony," he said. "I think we all went out in a blast of glory. Even though our party did not win the national election, I think we North Carolinians can hold our heads high and say we supported our ticket."

No votes were cast for Ross Perot or Pat Buchanan at the ceremony, perhaps for a reason.

In the 1968 general election, a member of the college refused to cast a ballot for Richard Nixon, who carried the state, and instead voted for George Wallace.

After that, Mr. Pulliam said, the state passed a law requiring the electors to vote for the person who carried the state or be removed from the college and fined \$500.

"We all had to sign official documentation, and one official copy will be sent to Washington," Mr. Pulliam said. "It is a ceremony that has not always been followed."

Mr. Pulliam said the Democrats broke tradition. The electors came to Raleigh, signed a paper and left. No ceremony, no glory, no pomp, he said.

"One year, they just came and were given scratch pieces of paper to sign," Mr. Pulliam said.

The ceremony has been held the last three presidential elections, Mr. Pulliam said. "Republicans always do things with class."

The ceremony was attended by the state's top Republicans, including Gov. Jim Martin.

Mr. Pulliam was selected to the college as a representative from the 7th Congressional District. The electors are paid \$44 and 17 cents a mile.

"Since Dan Quayle is a distant, distant cousin of mine, I think that is one reason they gave me that honor," he said.

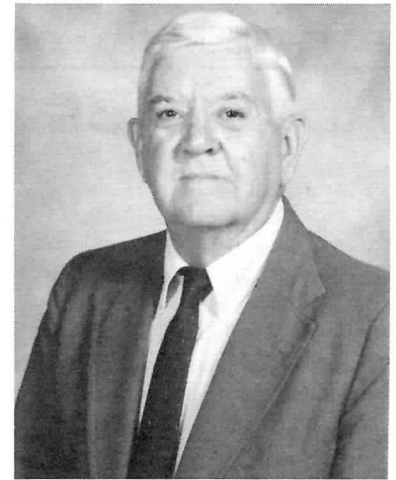
Mr. Pulliam's father, grandfather and great-grandfather were all Republicans. "I have always been active in the party, from the courthouse to the White House," he said.

He has run for the Cumberland County Board of Education and the General Assembly. He blames both losses on being a member of the Republican Party at a time when admitting such affiliations was admitting defeat—especially right after Watergate. That's when Mr. Pulliam ran for the General Assembly.

"I wanted to make sure people had a choice and to show there were qualified Republicans out there," Mr. Pulliam said. "If you want to find out who your friends are, run for office."

Despite setbacks at the polls, Mr. Pulliam has always remained active in the party. For 25 years, he was the adviser for the Young Republicans Club at Methodist College.

"I have been faithful going to county, district and state conventions as a delegate



▲ BRUCE PULLIAM

and have even done research for the Republican Party looking into the background of candidates," he said.

That's not to mean he was looking for skeletons. "No, no, no," he said with a chuckle, "researching voting records and things like that."

Mr. Pulliam calls himself a moderate Republican. He said he is conservative on economic matters and liberal on social ones. "That's my Quaker influence, I guess."

Mr. Pulliam said he will watch the political process closely during the next four years. He said he wants to see if Bill Clinton can keep the promises he made during the campaign.

"As a good Republican, we will say, as General MacArthur did, 'we shall return,' Old Republicans do not fade away. They will always return."

—Reprinted with permission



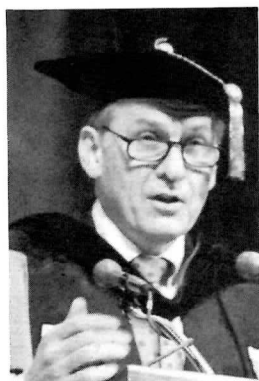
▲ THE INSTITUTE OF MANAGEMENT ACCOUNTANTS PRESENTED MC ACCOUNTING STUDENTS WITH A PLAQUE NOV. 17 FOR WINNING THE IMA SOUTHEAST REGION CASE COMPETITION. L. TO R. JOE DOLL, ROSE POWERS, CARRIE PERKINS, BOB COOPER, ROBERT BELL, WALT SWING.

R-M PRESIDENT TELLS DECEMBER GRADUATES:

'ALWAYS BE HONORABLE...THOUGH YOU MAY

Winter graduates of Methodist College December 18 were advised to "always be honorable, even though you may never be recognized or honored for it."

Dr. Ladell Payne, president of Randolph-Macon College in Ashland, Virginia, told 85 graduating seniors that everyone can't be a winner, but that "unsung heroes, the unrecognized, and also-rans" can be worthy of honor if they exemplify passion, sacrifice, and



▲ DR. LADELL PAYNE

endurance. Dr. Payne said he agreed with the late William Faulkner, who said, "I believe that man will not merely endure, but will prevail. He is immortal because he has a soul, capable of

passion, sacrifice, and endurance."

Twenty-one members of the winter class graduated with honors—12 "cum laude," seven "magna cum laude", and two "cum laude". Dr. Elton Hendricks, college president, presented the third annual Sam Edwards Award to Mrs. Judith W. Blake of Hope Mills, denoting her selection by the faculty as the outstanding evening student.

A senior contract specialist at Fort Bragg, Mrs. Blake received a B.S. degree in history (magna cum laude) and an A.A. degree in Bulgarian. She has chaired the Fort Bragg Federal Women's Program Committee, served as secretary of the Hope Mills Chamber of Commerce, worked on the boards of the Fayetteville Symphony Orchestra Association and the Dance Theatre of Fayetteville, and done volunteer work with the Red Cross, Girl Scouts, and Boy Scouts.

In other commencement activities, Fernando Martinez, a history major from El Salvador, presented his country's flag to the college. Roger Pait, president of the Methodist College Alumni Association, welcomed the new members of the Class of '92.

A list of winter graduates follows:

**BACHELOR OF ARTS**

(Surrounding Areas)

Fayetteville: Sarah Mizell Barry, sociology; Alice Freeman Cashwell, music; Tracy Powell Lauderdale, French; Ann Elizabeth Morris, writing; Michael S. Richardson, business administration; Sondra M. Wolfe, criminal justice.

Ft. Bragg: Michelle L. Jinnette, international studies.

(Other Countries and States)

Hitoshi Mori, Japan, French.

**BACHELOR OF SCIENCE**

(Surrounding Areas)

Fayetteville: Calvin P. Andrews, Jr.,

business administration; Billie Renae Barefoot, business administration; Ian H. Bates, accounting; Sandra L. Bayliss-Carr, sociology; Judith Marie W. Blake, history; Donna Marie Bramble, business administration; Carla McNeill Brown sociology; Komkai Buranasongkram, computer science; Rustin Edward Butler, accounting; Tanya S. Byrn, elementary education; Scott Lafayette Carter, business administration; Dana Claudette Caulder, business administration; Robert Thomas Clayton II, business administration; Donna Michelle Combs, accounting and political science; Thomas M. Cunningham, business administration; Robert Matthew Dempster, sociology; Lester W. Ellis III, accounting; Betsy Ann Enloe, accounting; Vivian Marie Fredricks, elementary education; James N. Gibney, business administration; Deanna Matthews Godwin, middle grades education; Michael Andrew Haluski, business administration; Barnett Henry Hill, accounting and business administration; Richard W. Jinnette, business administration; Donald Spencer Kline, Jr., business administration; Patricia M. Kline, sociology and social work; Mark Lee Lange, physical education; Ronald W. Liggins, business administration; April DeAnne MacMillan, elementary education; Fernando A. Martinez, physical education; Leonard Paul McComas, business administration; Joseph K. McCoy, business administration; Jack Chester Mellor, Jr., political science; Clifford Overby, Jr., business administration; Paul Daniel Palmisano, business administration; Madelyn Rene Pelchat, elementary education; Charissa Devine Perkins, accounting; Kim W. Reeder, elementary education; Michelle Lee Reeves, criminal justice; Malcolm Carr Register, physical education; Barbara Jean Rhoads, elementary education; Gregory D. Rhoads, sociology; Thomas E. Rittenhouse, business administration; Robert Glenn Scott, business administration; Darla Yvonne Sexton, sociology; Alison Becker Shirley, elementary education; Lara Aileen Steele, social work and sociology; Kelly Leigh Taylor, elementary education; Rodney Wayne Tolentino, computer science; Helen Laura Christmas Vile, sociology; Heather Blake Wheeler, accounting and business administration; Lester Meredith Wilkins, sociology; Guyla Beth Wilkinson, elementary education.

Bunnlevel: Debra Branch Byrd, Business administration.

Clinton: Trenda Sharet Stevens, business administration.

Dunn: Kathryn Branch Daniels, business administration.

Elizabethtown: Amy Elizabeth Currie, biology; Lisa Charlene Taylor, business administration.



▲ DECEMBER GRADUATES PROCESS FROM THE BERN STUDENT CENTER TO REEVES AUDITORIUM.

# NEVER BE RECOGNIZED OR HONORED FOR IT

(Other Areas of the State)

David Dwight Williams, Raleigh, NC, history; Charles Patton Thomas, Rowland, NC, sociology and social work; Eileen Joyce Guevera Perry, Sanford, NC, computer science; Lisa Carden Burgess, Semora, NC, elementary education; Adam R. Hall, White Oak, NC, accounting.

(Other States and Countries)

Sara L. Beechey, Canada, business administration with a concentration in golf management; Robert Charles Foreman, Ringwood, NJ, physical education; Richard C. Foutz, Homer City, PA, history; Mark David Gleason, Alexandria, VA, business administration; Michael Bernard Krick, Williamsburg, VA, business administration with a concentration in professional golf management; James Alvin Lavender, Jr., Cocoa, FL, business administration with a concentration in professional tennis management; Antonio Lamont McGriff, Palatka, FL, communications; Lindsey Virginia McRae, Bennettsville, SC, business administration; Lori Ann Pickrel, Galesburg, IL, elementary education; Brigitte Anna Roller, Summerville, SC, accounting; Timothy Christopher Schieffelin, Maitland, FL, physical education; Dawn Renee Thompson, Bethesda, MD, elementary education.

## BACHELOR OF APPLIED SCIENCE (Surrounding Areas)

Fayetteville: Helen Laura Christmas Vile, associate degree concentration in dental hygiene.



▲ WINTER GRADUATES AND THEIR FAMILIES AT BRUNCH SPONSORED BY THE ALUMNI ASSOCIATION.

Dunn: Kathryn Branch Daniels, associate degree concentration in industrial management.

Bunnlevel: Debra Branch Byrd, associate degree concentration in industrial management.

## ASSOCIATE OF ARTS

(Surrounding Areas)

Fayetteville: Judith Marie W. Blake,

Bulgarian; Melissa Greer Burch, sociology; Elizabeth Beck Dickerson, general studies; Julie Lynne Dixon, biology; Tami M. Marano, Chinese Mandarin; Yuka Sugiyama, art.

Ft. Bragg: Edwin Jusino-Vega, business administration.

(Other States)

Kraig A. Kvalevog, Rockville, IN, business administration.

## ENSURE A BRIGHTER TOMORROW—JOIN THE MCES

As student needs continue to grow along with Methodist College enrollment, it becomes increasingly important for the College's assets to multiply. This can happen in several ways.

Each year Methodist College conducts an Annual Fund Campaign to provide for operating costs. Presently, our operating budget is approximately \$12 million and it will continue to grow. Generous unrestricted and restricted annual gifts from businesses, friends, and alums help provide this source of revenue, along with the United Methodist Church and its agencies, trustees, various boards and the Independent College Fund of North Carolina.

The single most important area of revenue growth for any independent college is its endowment fund. Thought-

ful outright gifts are important in meeting today's needs, but of equal importance for the future survival of Methodist College are the needs of tomorrow and your assistance in meeting them.

There are four primary ways of providing support to the Methodist College Endowment:

- Outright gifts of cash, securities, property
- Gifts through bequests

- Gifts with retained life income and interest

- Gifts of life insurance

We urge you to take the time to consider a planned gift and join the Methodist College Endowment Society (MCES). We would be happy to provide you with additional information if you would call the Development Office at (919) 630-7170.

*We extend our deepest sympathies to:*

—The family of Master Sergeant John Fletcher Green (Ret.) following his death. He is survived by his wife Jean and two children. He worked in the Methodist College Maintenance Department for 10 years.—





▲ THE CHAPEL CHOIR FROM PAICHAJ UNIVERSITY IN SOUTH KOREA FOUND AN APPRECIATIVE AUDIENCE AT METHODIST COLLEGE FEB. 2.

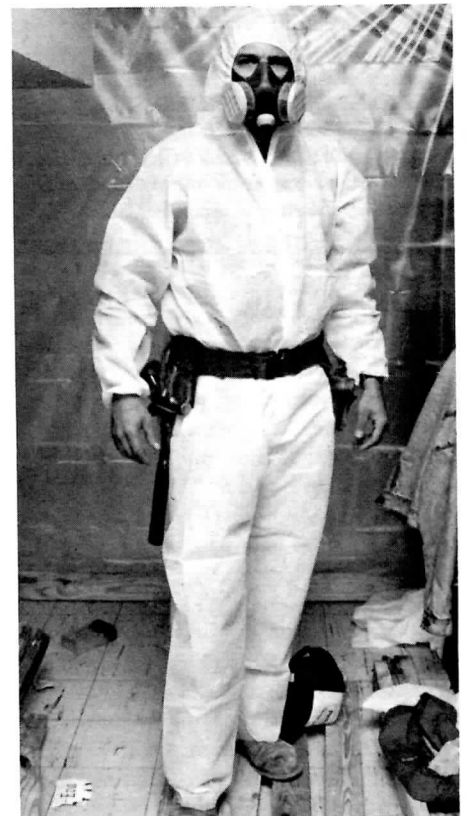


▲ MEMBERS OF THE METHODIST COLLEGE CHORUS 'HAM IT UP' ON THEIR ARRIVAL IN NASSAU FOR A JANUARY CONCERT TOUR.



▲ THE FLAGS OF 30 NATIONS NOW HANG IN THE BERNS STUDENT CENTER, REPRESENTING THE HOME COUNTRIES OF INTERNATIONAL STUDENTS WHO HAVE GRADUATED SINCE 1985.

# WHAT'S AT



▲ 'ABESTOS MAN' PAUSES DURING REMOVAL OF MATERIAL FROM THE MECHANICAL ROOM OF THE TRUSTEES CLASSROOM BUILDING—PHOTO BY KEITH JACOBS



▲ **SUSAN MATULA OF THE FINANCIAL AID OFFICE ENTERS STUDENT DATA INTO THE NEW F.E.E.D.S. SYSTEM, WHICH PERFORMS A NEED ANALYSIS AND TRANSMITS APPLICATIONS FOR FEDERAL AID. THIS SYSTEM DOES IN 33 HOURS WHAT USED TO REQUIRE UP TO FIVE WEEKS.**

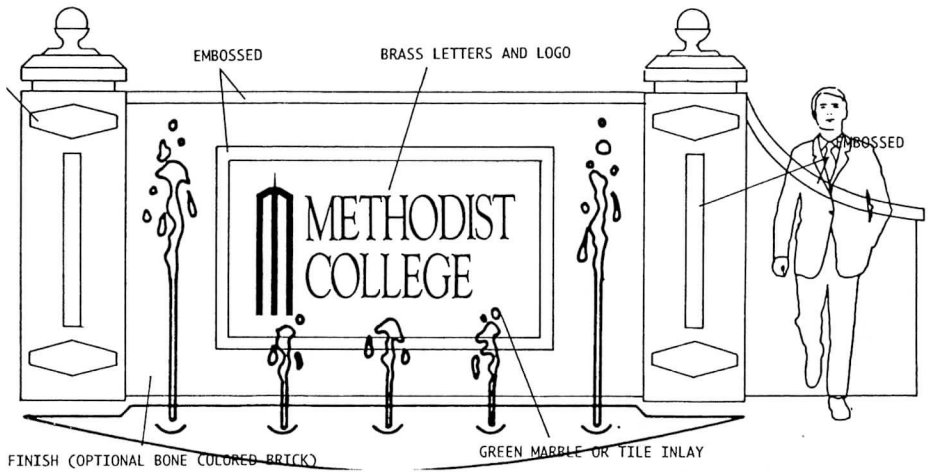


▲ **A NEW 29-PASSENGER BUS WAS DELIVERED IN JANUARY.**

# NEW METHODIST



▲ **MAINTENANCE WORKERS PLANT JAPANESE CHERRY TREES DONATED BY THE PARENTS OF HITOSHI MORI, A DECEMBER GRAD.**



▲ **A NEW BRICK SIGN FOR THE SOUTH ENTRANCE IS NOW UNDER CONSTRUCTION. LIGHTED, WITH WATER FOUNTAINS, IT WILL CONSIST OF TWO IDENTICAL SIGNS JOINED AT A 90° ANGLE. IT WILL BE VISIBLE FROM BOTH LANES OF RAMSEY STREET.**



▲ **CAROLINE PARSONS, ASSOCIATE DIRECTOR OF DEVELOPMENT, AWARDS A DOOR PRIZE TO DR. JULIA PREWITT AT THE LOYALTY FUND BREAKFAST.**

# WOMEN'S BASKETBALL TEAM WINS DIXIE TITLE

The Methodist College women's basketball team ended the regular season with an overall record of 14-10 and a first place Dixie Intercollegiate Athletic Conference mark of 8-2. The first place Dixie Conference regular season mark was a first for the Lady Monarch basketball program.

The Lady Monarchs came up two points shy of repeating as the Dixie Intercollegiate Athletic Conference Tournament Champions as they took on archrival Christopher Newport in the Championship round of the 1993 DIAC Tournament. With 2.4 seconds remaining in regulation time, their dreams of a repeat championship faded as Cynthia Allen sank the go-ahead basket to push the Lady Captains to the 85-83 victory.

Both teams played inspired basketball throughout the game, with several lead changes taking place. Methodist went into the half with a 49-44 lead. The Lady Monarchs opened the second half with a cold spurt as Christopher Newport pushed to a 69-59 lead at the 13-minute mark. At the 6:55 mark Methodist pulled to within 3 points with a 73-70 score. With 43 seconds remaining the game was tied at 81.

Christopher Newport's Karen Barefoot



▲ **ROXANNE CANNADAY DRIVES FOR THE BASKET.**

—PHOTO BY KEITH JACOBS

was fouled with 33 seconds on the clock and put on the line for a one-and-one opportunity. Barefoot sank both free throws to push the score to 83-81. Senior Daphne Akridge (Bassett, VA) scored for the Lady Monarchs with 16 seconds to tie the score at 83.

With regulation time running down, Katina Thorne (So., Fayetteville, NC) blocked a Karen Barefoot shot. Methodist recovered the loose ball, but lost the handle as CNU took control and scored to seal the victory.

This was the type of battle one would expect from two talented teams. Either team could have gone away with the victory. The game was dominated by aggressive defensive play on both ends of the floor and never lacked emotional or physical intensity.

Angie Garner (Jr., Angier, NC) and Novella McMillan (So., Fayetteville, NC) were named to the All-Tournament team. In the championship contest, Garner scored 19 points on 6 of 9 shooting from the floor and 7 of 8 from the charity stripe. Garner also grabbed 13 rebounds.

McMillan scored 16 points in the contest while shooting 50% from the floor and a perfect 6 of 6 from the foul line.

Daphne Akridge was named to the first team All-Conference squad, while McMillan was selected second team All-Conference.

Significant wins this season included a 79-72 overtime victory at home against Christopher Newport. This win set the (Please see BASKETBALL page 18)

## TOUGH SCHEDULE TAKES TOLL ON MONARCHS

The Monarch men's basketball team ended the season with an overall mark of 6-19 and a Dixie Conference record of 3-8.

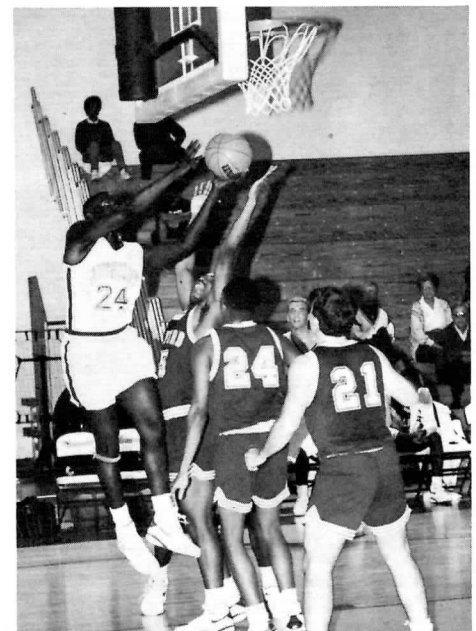
Youth and inexperience showed early, as the team got off to a 0-13 start before defeating Piedmont Bible College 95-62 January 26. The team returned only two seniors.

On January 30 the Monarchs captured their first Dixie Conference road victory in four years by defeating Averett College 77-58. Methodist experienced success on the road again against NC Wesleyan, handing the Battling Bishops a 65-58 defeat. Two days later in the March F. Riddle Center the Monarchs captured their third Dixie Conference victory of the season with a 69-66 win over the Cougars.

With three conference victories, the Monarchs ended the regular season in a tie for fourth place with NC Wesleyan. On the coin toss Methodist received home court advantage in the first round of the DIAC Tournament.

In first round play against NC Wesleyan February 23, the Monarchs never got on track offensively as they shot 24% from the floor in the first half and only 32% for the game, while the Battling Bishops shot 48%. The Monarchs lost 71-54 to end the season.

First Year Coach Bob McEvoy feels the Monarchs improved considerably during the season and played better than the win-loss record indicates. He said several young players—Eric Rhew, Troy Pennington, and Bill Nebrich—performed well.



▲ **KEVIN DENNISON SCORES FOR THE MONARCHS.**



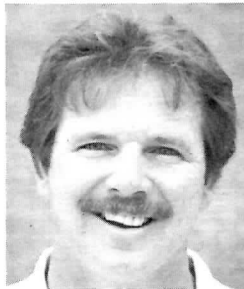


▲ **BRANDON BRIDGERS** IN CENTER FIELD.

## BASEBALL COACH NAMED SOUTH REGION COACH OF THE YEAR

Monarch Baseball Coach Tom Austin has been named South Region Coach of the Year for the fifth time.

During his 13-year career he has compiled an overall record of 423-151, while leading his teams to NCAA tournament play 12 consecutive years. His teams have won both the South Region and Dixie Conference championships four times. His '91 and '92 squads participated in the Collegiate World Series. Coach Austin is currently ranked fifth on the list of winningest active Division III coaches.



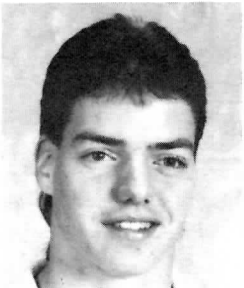
## FOOTBALL PLAYER NAMED TO ALL AMERICAN TEAM

Wide receiver Rich Jinette was recently named to the NCAA Division III All American Football Team.

He averaged 18.2 yards per punt return and 34.2 yards per kickoff return, finishing second in the nation in both categories.

Coach Jim Sypult described Jinette as "a great weapon for our football team whose desire to succeed and work ethic set an example for the younger players."

A business major from Grandview, WA, Jinette graduated in December and now works for Wal-Mart in Sanford, NC.



# BASEBALL SQUAD SHOWS STRENGTH AT ALL POSITIONS

Coach Tom Austin has high expectations for the 1993 Monarch baseball team.

The team returns an experienced outfield, including left fielder Joe Myrtle and center fielder Brandon Bridgers. Both have been starters since their arrival at Methodist.

Right field still remains an open position, with Brian Steinhagen, a returning player and Matt Berry, a transfer from UNC-G, competing for that position. The outfield also has good depth with freshmen Craig Spence and Tony Palombizio.

The infield is loaded with talented players as well. Andy Nelson will see duties behind the plate. "Nelson calls a good game and possesses occasional power at the plate," said Coach Austin. Cheyenne Brooks will handle backup catching duties.

First base is up for grabs. Brad Parker, Shane Bagby, and transfer Todd Boyette are in a three-way battle for the position. All three are excellent defensively and swing the bat well.

Mike Williams will see action at second base. Williams possesses a good range, but needs to develop consistency and needs to mature as a hitter.

The shortstop belongs to Mark Roncace. Roncace was instrumental in solidifying Methodist as a defensive team last season. Paul Boehm will back up both second base and shortstop.

Chris Horton should get the call at third base. He is solid defensively and after a year's experience, his batting should improve as well.

Chris Culbreth should see action somewhere on the field. He is an overall good player, possessing good speed, excellent power at the plate and solid defense.

The designated hitter position is also up for grabs. Cheyenne Brooks or Brian Steinhagen are contending for this position.

The 1993 team possesses a fairly solid group of pitchers. Two local talents—Brian Ford and Matt Boucher—will be starting. Derek Covell, Ricky Young, Paul Knight and Johnny Faircloth are battling for position in the rotation. Short relievers will be Jeff Hewett and Chad Hathaway. Bradley Graham, Terry Whitfield, Bill Hughes, and Don Pavlick are competing for middle relief duties.

Team morale is extremely high. Captains Paul Knight, Andy Nelson, and Joe Myrtle should provide the leadership to keep the team focused through the lows and over the peaks.

## MEN'S BASEBALL

^*Apr. 3	Christopher Newport	12:00 p.m.
^*Apr. 4	Christopher Newport	2:00 p.m.
Apr. 9	Mount Olive	3:00 p.m.
^Apr. 10	Emory	12:00 p.m.
Apr. 14	Barton	3:00 p.m.
*Apr. 17	Greensboro	12:00 p.m.
*Apr. 18	Greensboro	1:00 p.m.
^Apr. 20	Elizabeth City State	3:00 p.m.
^Apr. 21	Pembroke State	3:00 p.m.
*Apr. 24	NC Wesleyan	12:00 p.m.
Apr. 25	NC Wesleyan	2:00 p.m.
Apr. 29	Salisbury State	3:00 p.m.
^+May 1	Apprentice School	1:00 p.m.
May 2	St. Andrews	1:00 p.m.
^May 3	Mary Washington	3:00 p.m.
^May 15	Norfolk State	1:00 p.m.
^ HOME GAMES		
* DIXIE CONFERENCE GAMES		
+ SENIOR DAY		
Head Coach: Tom Austin		
Assistant Coach: Jim Peebles		

## WOMEN'S GOLF TEAM RANKED No. 1 IN NATION

The Methodist College women's golf team is ranked No. 1 nationally in the Division III poll. Four of the top six golfers are Lady Monarchs. Kelly Cap is ranked No. 1 individually, while Elizabeth Horton, Allyson Greer and Ana Rodriguez are ranked 3rd, 4th and 6th respectively.

This season the team seeks its seventh national title in the eight-year program. The spring season opens March 10 with the Northern Illinois Snowbird Intercollegiate to be played at Pebble Creek Country Club in Tampa, Fl.

Allyson Greer, last year's national champion, returns healthy after an extended illness in the fall, which caused her to miss one tournament and score well below her standard of play in two other tournaments.

Two newcomers, Amy Hoke (Conroe, Tx), and Michelle Jakren (Tonawanda, NY), have been added to the 1993 spring roster.

Kelly Cap led the team in the fall with



▲ KELLY CAP LEADS TEAM.

a 79-stroke average, followed by Elizabeth Horton with an 80 average.

Methodist won the Division I James Madison Invitational, making that tournament the highlight of the fall.

Small College Nationals will be hosted by Mt. Holyoke at South Hadley, Mass. on the Orchards Course May 10-12.

## MC SPONSORS GREAT AMERICAN TENNIS CHALLENGE

The Methodist College Tennis Management Program recently brought The Great American Tennis Challenge to the Fayetteville area.

The Challenge offers adult tennis players the opportunity to compete in one of 12 divisions over an eight-week period, March 8-April 30. The top 16 finishers in each division will compete for prizes and titles during a Citywide Championship Tournament at Methodist May 8-9.

The Great American Tennis Challenge originated in Tampa, Florida in 1991 and was recently named the Best Recreational Adult Tennis Program of 1992 by the U.S. Tennis Association. It matches partners of similar skill levels and establishes a countywide ranking system.

"The biggest problem for most recreational tennis players is finding suitable partners," said Dr. Theresa Warrell, director of Methodist's Tennis Management Program. "This challenge will solve that problem."

The Great American Tennis Challenge is being sponsored locally by WKFT-TV 40, Pizza Hut, Q98 (WQSM) Radio, and Coca Cola.

## TENNIS TEAMS LOOK STRONG

The men's and women's tennis teams face challenging schedules.

Ranked 24th in the nation among NCAA Division III schools, the men's team, led by Mark Faber, will compete against highly-ranked teams such as the University of the South and Principia. The Emory Tournament in Atlanta will offer the players the opportunity to prove themselves among some of the toughest teams

MC's No. 1 doubles team of Mark Faber and Scott Pickrel hold a ranking of No. 10 in the South Region and are working toward NCAA competition.

The women's team, also ranked 24th in the nation, is led by senior Tracy Maness. Tracy has a national ranking of 27 in singles and 21 in doubles with her partner Janna Bias. The team will travel to Hilton Head for tough match play and training.

Both the men's and women's teams

are hoping to continue their tradition as Dixie Conference Champions. The women have won four consecutive years and the men have won two consecutive years.

Dr. Theresa Warrell, first-year head coach, is very optimistic about a successful spring season.

The MC tennis teams will play their last home match April 7 at 3:00 p.m. against Guilford College.

## BASKETBALL—

CONTINUED FROM PAGE 16

stage for a successful Dixie Conference regular season. The team also handed Meredith College a 64-61 loss. At the time of the contest Meredith was unbeaten, with a mark of 14-0, and ranked 6th in the South Region.

## SOFTBALL SQUAD SHOWS PROMISE

Softball Coach Karen Smith will look to an experienced group of returnees and a talented crew of newcomers to capture a fourth consecutive Dixie Conference title.

Kim Miller (So., Jacksonville, NC) will see action behind the plate. Pitching duties will go to freshman Monica Dunn (Fredricksburg, VA), an experienced fast pitch player.

The infield, while young, is loaded with talent. Freshman Alisa Lipe (Salisbury, NC) will play first base. Junior Anne Uleman (Fairfax, VA) returns this season after sitting out last season with a knee injury. Wendy Wear (So., Merry Hill, NC) will be in the hot box at third base. Shortstop will belong to Sandra Tripp (Fr., Reidsville, NC).

(Please see SOFTBALL page 19)

## GOLF TEAM RETURNS TOP PLAYERS

The men's golf team begins the 1993 season with the goal of a fourth consecutive NCAA Division III national title. Coach Steve Conley begins his sixth season at the helm.

Four of the five players from last year's national championship team will be returning. They are: Bill Anderson (Sr., Hollidaysburg, PA), Eric Haile (Sr., Chalfont, PA), Dave Jukes (Jr., Orwigsburg, PA), and Ryan Jenkins (So., Colonial Heights, VA).

The 1993 spring schedule is loaded with challenging tournaments. The team will defend its championship in the Gordin Collegiate Classic, featuring the top 12 Division III teams in the country. At the Dixie Conference Tournament April 18-20, the Monarchs will try to avenge last year's loss to archrival Greensboro College. The National Championship will be held at Torrey Pines South Course in San Diego, CA.



▲ L. TO R., RYAN JENKINS, DAVE JUKES, ERIC HAILE, BILL ANDERSON.

## NEW TRACK COACH OPTIMISTIC

In the wake of the Monarchs' Fourth Place finish at the indoor conference championships, Track Coach Brian Cole feels the team is poised to make a run at the "Top Three" in the Mason-Dixon Conference.

Heading the list of returnees is Jamelle Ushery (So., Albany NY), who will compete in both hurdling events and in the two relays. Brett Dietrich (Jr., Fayetteville, NC) will be a top contender in the 3000m steeplechase.

Other returnees expected to make a major contribution are: second year performer Jon Garner (Raleigh, NC)—mid-distance and Cape Fear HS graduate Derrick Johnson (So.) in the throws.

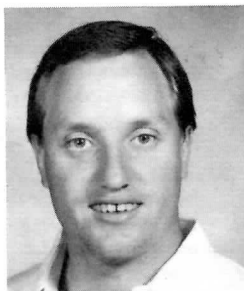
The team will include three freshmen, including two who have already captured

indoor individual conference titles. Lionel Washington (New Orleans, LA) ran a time of 6.57 sec. to bring home the 55m dash crown, and Brett Caincanelli (Chicago Heights, IL) won the triple jump.

Another freshman who will contribute greatly is Travis Armstrong (Gastonia, NC) in the high jump. Other newcomers are Erick Williams (Ashoske, NC)—sprints, Ronnie Capobianco (Coconut Beach, FL)—sprints, Dan Jackson (Albany, NY)—throws, and Alexander Richardson (Pennsicola, FL)—mid-distance.

On the women's side, key performers will be: Abigail Findlay (Jr., Fannborough, UK)—distance, Christi Ferguson (Fr., Monticello, MN)—mid-distance, and Karen Murphy (So. Jacksonville, NC)—high jump.

## CONLEY HONORED



Steve Conley, men's golf coach, was recently named NCAA Division III District III Coach of the Year for the 4th consecutive year by the Golf Coaches Association of America.

Since Conley's arrival at Methodist, the Monarchs have finished in the top five in the NCAA National Tournament, winning three consecutive national championships. Conley has coached 16 All-Americans and two individual national champions.

## SOFTBALL—

CONTINUED FROM PAGE 18

Returning to play center field for the Lady Monarchs will be sophomore Kerri Oliastro (Ellwood City, PA). Left field duties will belong to Tracy Ossont (Fr., Ava, NY). Local product Debra Lamboy (Jr., Fayetteville, NC) gets the call in right field.

Melissa Hardin (Fr., Chadburn, NC) should see lots of action as a utility player. Leigh Ann Hinson (So., Dunn, NC) will back up the infield positions, along with local product Regina Johnson (Fr., Fayetteville, NC).

## 1993 MC SUMMER CAMPS

- JUNE 21-25 SOCCER CAMP**  
—Alan Dawson, 630-7097
- JUNE 21-25 WOMEN'S BASKETBALL**  
—Rita Wiggs, 630-7182
- JUNE 21-25 PEE WEE BASEBALL CAMP**  
—Tom Austin, 630-7176
- JUNE 27-JULY 2 JUNIOR GOLF CAMP**  
—Jerry Hogge, 630-7144
- JUNE 28-JULY 2 ALL SPORTS CAMP**  
—Rita Wiggs, 630-7182 or  
—Bob McEvoy, 630-7185
- JUNE 28-JULY 2 BIG LEAGUE BASEBALL CAMP**  
—Tom Austin, 630-7176
- JULY 5-9 ADVANCED BASEBALL CAMP**  
—Tom Austin, 630-7176
- JULY 5-9 MEN'S BASKETBALL CAMP**  
—Bob McEvoy, 630-7185
- JULY 14-17 UNITED METHODIST GOLF RETREAT**  
—Jerry Hogge, 630-7144
- JULY 18-23 TENNIS CAMP**  
—Theresa Warrell, 630-7147
- JULY 19-24 MC MUSIC CAMP**  
—Mrs. Cogswell, 630-7103
- JULY 25-30 TENNIS CAMP**  
—Theresa Warrell, 630-7147

## CLASS OF 1964

Betty G. Bunce is secretary and treasurer of two family-owned businesses—Bunce Buildings and Bunce Investments.

## CLASS OF 1971

Bobby Hodges has formed a new corporation known as "Hodges/Baldwin Showplace." He has added systems and equipment for the hearing impaired.

Angie Vurnakes McKimmon was recently promoted to sales manager for CTE Cellular One, for Raleigh, Durham and Chapel Hill. She and her husband, Jim, live in Raleigh with their son, James, who is five.

Lynn Carraway has been named Vice President of Marketing of WZFC-FM "The Fox." She has previously served as marketing director at CrossCreek Mall.

Lynn is on the board of directors of the Fayetteville Area Chamber of Commerce, the Volunteer Center, The Dogwood Festival and Methodist College Alumni Association.

## CLASS OF 1976

Gwendolyn Walters Gilfus is teaching kindergarten full-time at a private school in Gloucester, VA.

## CLASS OF 1977

N. J. Udchukwu regrets that he missed Homecoming '92. He sends his "felicitations" and hopes that this year was a "red-letter day for all who attended."

## CLASS OF 1978

Paula L. Adams is the director of social work services at Conway Hospital and also a consultant to various community agencies. His new address is: 1211 Collins Part St.; Conway SC, 29526.

## CLASS OF 1979

Rev. Jerry Lewis will become Cadet Chapel Chaplain at the U. S. Air Force Academy in June.

## CLASS OF 1982

Alice Regina Davis Myers recently celebrated the first birthday of her first child, Christopher. He was born Feb. 4, 1992 in Aschaffenburg, Germany. Alice and her husband, Darrell, will also be celebrating their tenth anniversary with a

renewal of their wedding vows on July 3 at the post chapel on Fort Irwin, California.

Capt. Thomas C. Wilson has graduated from the Infantry School Ranger Course at Fort Benning, GA.

## CLASS OF 1983

Michael Sundborg is now in his third year of

## CLASS OF 1988

Roy J. Haddock married Ann Marie Suedbeck on Nov. 14. He is employed by Lee-Harnett Mental Health in Sanford. Ann is a mental health counselor at Cumberland Hospital in Fayetteville.

## CLASS OF 1989

Bob Hathcock was recently selected as the Substance Abuse Program Director for the Lee-Harnett Mental Health Center. His wife Teresa is regional educator for Fantastic Sam's. George Scott Smith announces his engagement to Melissa Ann Horne of Fayetteville. Their wedding is planned for Nov. 21.

Scott Smith and Melissa Horne ('92) were married Nov. 21, 1992. Scott is a psychologist for the Cumberland County Schools. Melissa is a fourth grade teacher also for Cumberland Co. Schools. Paula Clark Durham has joined

the accounting firm of Buie, Norman, and Co. in Fayetteville. She is a certified Public Accountant, and has worked in the accounting industry for 6 years. She is a member of the American Institute of CPA's and the Sandhills Chapter of the N.C. Assn. of CPA's.

## CLASS OF 1990

Rhonda M. Faircloth has transferred into the management training program at United Carolina Bank. Before joining UCB in Dec. '91 as a loan documentation clerk in the Wilmington Mortgage Loan Department, Rhonda was with another major North Carolina financial institution and a finance company.



Debbie L. Kent (Hyde) was commissioned a second Lieutenant in the U.S. Air Force on November 18th.

## CLASS OF 1991

# WHAT'S NEW WITH YOU?

College faculty, administration, and alumni enjoy reading about MC alumni in the "Classified" pages of METHODIST COLLEGE TODAY. If you would like to share some good news (marriage, births, promotion, civic or professional honor) please return this form.

### ALUMNI NEWS

(Please include Name and Class Year)

\_\_\_\_\_

\_\_\_\_\_

\_\_\_\_\_

\_\_\_\_\_

.....

#### Change of Address

Name \_\_\_\_\_ Class \_\_\_\_\_

New Address \_\_\_\_\_

Effective Date \_\_\_\_\_ Phone \_\_\_\_\_

Send your news or change of address to: Alumni Office,  
Methodist College, 5400 Ramsey St., Fayetteville, NC 28311

medical school at the Uniformed Services University of the Health Sciences.

Robert L. Hostetter has received his master's degree from Campbell University. He is currently employed with the EPA as an accountant. Friends may write him at: 1240 Shadow Bark Ct.; Raleigh NC 27603.

Mary Herma Gardner and Peter Charles Sabo married Nov. 28 at the Radisson Prince Charles. Both are attending Methodist College and will live in Fayetteville.

## CLASS OF 1984

Robert L. Larsen is commander of the 14th Army Band at Fort McClellan, AL. His band won the 5 star award for the Parade of American Music Competition. This is the second consecutive year this band has won the highest award possible.

## CLASS OF 1987

Cu Phung has just received his doctorate in physical chemistry from Duke University. He will be at the University of Utah, for a post doctoral assistantship in the Utah Super Computing Institute.



Eric Stephen Sayer was married Nov. 7, to Tiffany Michele Benton of Fayetteville. The reception was at the Holiday Inn Bordeaux. The couple will live in BlueBell.

Jamie Glass was married to Capt. Mark Heiser Dec. 31, 1992 in Las Vegas, NV. She is attending Webster University of St. Louis for her master's in human resources development.

## CLASS OF 1992

Wendy L. Cline was married Sept. 26, 1992 to Robert F. Helms III. Wendy will open a residential Hospice in Fayetteville. For information call 323-1231.

Pam Woodell was wed to Joel Perry on Oct. 24, 1992. The couple will live in Raeford.

Jennifer Akers is attending graduate school at the University of Akron, as a graduate assistant working toward a master's degree in adapted physical education.

Amanda Cook is living and working in Seville, Spain. She has taken the LSAT and has applied to several law schools for admission this fall.

## '93 SUMMER ACADEMIC CALENDAR

### Summer Day College (10 Weeks)

Term I begins Thur May 20  
 No Classes\* Thur/Fri Jun 17/18  
 Term Ends Fri Jun 25  
 \*Methodist Conference June 16-18

Term II Begins Mon Jun 28  
 Holiday Mon Jul 5  
 Term Ends Fri Jul 30

### Summer Evening College (10 Weeks)

Begins Mon May 24  
 Mem. Day Holiday  
 Mon/Tue May 31-Jun 1  
 July 4 Holiday Mon/Tue Jul 5-6  
 Term Ends Fri Jul 30

Tuition is \$95 per semester hour

## PAULA MILLER HEADS CAREER PLANNING & PLACEMENT OFFICE

Paula Miller has assumed the newly-created position of director of career planning and placement at Methodist College. Ms. Miller began her duties Jan. 15 and will answer to Vice President for Student Affairs Mike Safley.



Ms. Miller formerly worked as an executive assistant at the Fayetteville Area Chamber of Commerce and as an admissions representative at Cabrini College in Radnor, PA. She holds a B.A. degree in psychology

from Washington College in Chestertown, MD and is currently working on a master's in counseling at Pembroke State University.

The newest member of the Student Affairs staff will be housed in the Eubank Career Counseling and Placement Office in the Berns Student Center. Ms. Kathy Woltz will continue as Director of Counseling/Testing, with offices in the south wing of the Berns Student Center.

While her primary task will be to help graduates find jobs, Ms. Miller said, "I would like to work with students throughout their four years here in career development—shaping and achieving their career goals." She said she will also work to bring more recruiters to Methodist to interview students for jobs.

## ALUMNI CAN HELP STUDENTS NETWORK!

Are you willing to:

- Provide an internship?
- Notify the Career Planning & Placement Office of entry-level positions with your company?
- Conduct a seminar on interviewing, resume writing, job searching, etc.?
- Lead a class discussion about your profession and the future outlook for that occupation?

Please contact the Career Planning and Placement Office, 630-7279, if you can assist current students with their career goals.

The Career Center resources are available to alumni to assist with your changing career goals and needs.

## COLLEGE OFFERS SPECIAL OPPORTUNITY TO HONOR A LOVED ONE

A special opportunity to honor a loved one, living or deceased, has been established at Methodist College. A person may be honored by having their name placed on a street or parking area on the campus. Honor named streets and/or parking areas will provide a continuing memorial for the persons honored in a visible, meaningful, and lasting manner.

Donors will have the option of selecting a street or parking area as long as they remain available. The naming of a street or parking area is not restricted to graduates of Methodist, rather the College is seen as a community asset with over 75,000 persons visiting the campus annually for conferences, concerts, and athletic events; therefore, anyone's name

may be chosen as an honored name.

All funds received will be used to help build the Methodist College Endowment Fund and are fully tax-deductible. Parties interested in this program may contact B. S. Pankey, Vice President for Development, at (919) 630-7169 to obtain location of streets/parking areas, size of the endowment gift, and other details.

# 1992 ANNUAL GIFT REPORT TO FRIENDS OF METHODIST COLLEGE

## GIVING LEVELS

**TRUSTEES' ASSOCIATES**  
\$10,000 AND OVER

**PRESIDENT'S SOCIETY**  
\$1000-\$9,999

**MONARCH SOCIETY**  
\$500-\$999

**GREEN AND GOLD SOCIETY**  
\$250-\$499

**CENTURY CLUB**  
\$100-\$249

**BELL TOWER CLUB**  
UP TO \$99

To Friends of Methodist College:

The 1992 Annual Fund Campaign is now history, and it will be recorded in our books as a record year. The campaign brought in \$237,781 from unrestricted, restricted and gifts-in-kind contributions within Cumberland County and \$308,756 in gifts from outside Cumberland County-great work over all!

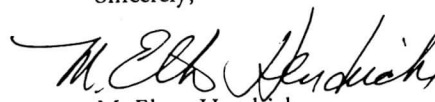
Special thanks are due Mr. Dick Player who led the campaign, Dr. Stan Griffin, Foundation Board President who coordinated solicitations, and to all the Volunteers who gave so generously of their time and resources.

For over three decades Methodist College has been committed to providing a quality education. The work of our Board of Trustees, Board of Visitors, Foundation Board, and Alumni Association Board, together with our staff, reflects this proud heritage. The Fayetteville community has always encouraged our students by supporting a college that nurtures the mind and the spirit. The growing national reputation of Methodist College, our record enrollments, the improved physical facilities, and new educational equipment are important developments. The past 30 plus years of support by our neighbors in Fayetteville and the Methodist College alumni around the world have enabled the college to strengthen its traditional programs and develop new initiatives which are making a real difference in the lives of our students. Our supporters are helping to strengthen a college committed to a well-trained mind and a caring spirit.

We are also grateful for the support of the United Methodist Church and its agencies, the Independent College Fund of North Carolina, various foundations, and numerous other donors whose support brings many deserving students to our campus.

We look forward to continued growth and improvement. We hope you will be a part of the life of Methodist College in the coming year and give generously when asked to help us "Reach New Heights in 1993"

Sincerely,

  
M. Elton Hendricks  
President

## ALUMNI AND FRIENDS

### TRUSTEES' ASSOCIATES

Estate of Wm. T. Alexander, III  
The Florence Rogers  
Charitable Trust  
Dr. Raul F. Gomez  
Haigh, Byrd & Lambert  
Independent College Fund  
Dr. W. Robert Johnson  
Dr. William Jordan  
Mr. Mitchell Nance  
North Carolina Conference UMC  
Sprint  
Z. Smith Reynolds Foundation

Mr. Jerome Clark  
Mr. Walter B. Clark  
Buena Vista Coggin  
Crown Manufacturing  
Dickson Family  
Mr. Murray O. Duggins  
E.I. Dupont DeNemours  
Company  
Edenton Street United MC  
Edward Walmsley Memorial  
Scho.  
Enlisted Spouses Association  
Mr. Robert Exum, Jr.  
Fayetteville Publishing Co.  
First Citizens Bank & Trust  
Co  
First Fidelity  
Mr. Charles Gaddy  
George E. Gordy Family  
Educational Trust Fund  
Mr. Joseph M. Hatcher, Sr.  
Mr. Robert C. Hatfield  
Haymount United Methodist Chur  
Ms. Amy Heese  
HELP Scholarship Fund  
Dr. M. E. Hendricks  
Mr. Wayne M. Hewitt  
Hoffer Remainder Annuity Trust  
Mr. Ralph F. Hoggard  
Houston Endowment Inc.

### PRESIDENT'S SOCIETY

Mr. Richard R. Allen  
Army Emergency Relief  
Rev. James A. Auman  
Belk Hensdale Company  
Dr. Erik J. Bitterbaum  
Board of Higher Ed. & Ministry  
Mr. Terry Wayne Boose  
Rev. & Mrs. Kermit Braswell  
Mrs. Mary W. Browning  
Dr. Hugh Bryan  
Mr. John W. Butler  
Butler Memorial Scholarship  
Mr. F. D. Byrd, Jr.  
Mrs. Nancy C. Capel  
Judge & Mrs. Sol G. Cherry

Mrs. Morie Murray Howard  
J. C. Penney Company  
J.J. Wiggins Memorial Trust  
Rev. & Mrs. Theodore R. Jenkins  
Johnston County Bar Assoc.  
Dr. John Wesley Jones  
Mr. Jerry A. Keen  
Kiwanis Club of Fayetteville  
Kiwanis Service Account  
LaFayette Memorial Park Corp.  
LaFayette Society  
Lem Markets, Inc.  
Mrs. Pauline Longest

Dr. William P. Lowdermilk  
Mid-South Insurance Company  
Molex Incorporated  
Mr. Takeo Mori  
National Association of Secondary  
School Principals  
National Society/ Public Acct.  
Mr. David R. Nimocks, Sr.  
North Carolina Natural Gas  
Dr. I. H. O'Hanlon  
Palm Beach Rotary Foundation  
Mrs. Ruth H. Palmer  
Dr. Richard W. Pearce

Rev. & Mrs. Charles R. Pittman  
Mr. Richard L. Player, Jr.  
Player, Inc.  
Pope Officer's Wives Club  
Professional Women of Fay.  
Mrs. Rosalie C. Ray  
Mr. Charles M. Reeves, Jr.  
Mrs. Constance K. Robbins  
Rochester District Golf Assoc.  
Sara Lee Personal Products Sch  
Mr. Louis Spilman, Jr.  
State Industries Foundation  
Stephen Bufton Memorial

# ANNUAL GIVING REPORT

Educational Fund  
Mr. R. Dillard Teer  
The George Record School Fnd.  
Tuf-Tex, Inc.  
United Methodist Women  
Wal-Mart Foundation  
Mr. Charles E. Warren  
Waste Management of N. America  
Mr. John H. Wheeler  
Mr. Richard D. Williams  
Mr. Sherrill Williams  
Mr. & Mrs. W. V. Williamson, Jr.  
Mr. & Mrs. Harvey T. Wright, II  
Mr. John Wyatt, Jr.  
Mrs. Mary Yarborough  
Mr. Ramon L. Yarborough

## MONARCH SOCIETY

American Institute of Cert./Public Accountants Fund  
Beta Theta Zeta Chapter  
Mr. James Allen Bledsoe  
The Brewton Sportsman Club  
Mr. Johnny Bryant  
Buffalo Gap High School  
Calvary Assembly of God  
Carolina Telephone & Telegraph Company  
Dr. & Mrs. Samuel J. Clark, III  
Mr. & Mrs. Gene Clayton  
Cross Creek Merchants Assoc.  
Crowell Constructors, Inc.  
Dickinson Buick-Dodge  
ECC Hotsey Scholarship Fund  
Ellis-Walker Builders, Inc.  
Fayetteville Monument Works  
Fayetteville X-Ray Association  
First Union National Bank  
First United Methodist Church of Cary  
Ft. Bragg Officers' Wives' Club  
Dr. & Mrs. Willis C. Gates  
Mr. J. N. Gibson  
Dr. Stanley G. Griffin  
Mr. Thomas J. Hall  
Mr. & Mrs. David Herring  
Mr. Jerry Hogge  
Holt Oil Company  
Mr. Troy M. Howard  
I. C. I. Americas, Inc.  
Immune Deficiency Foundation  
Dr. Bert Ishee  
John P. Burke  
Mrs. Jane Johnson  
Dr. & Mrs. Paul S. Johnson  
Jonesboro Garden Club  
Dr. Donald S. Kline  
Dr. & Mrs. Tryon D. Lancaster  
Long Life Lighting, Inc.  
Maine State Golf Association  
Mr. Dale Webster Marshall, Jr.  
Martin County High School  
McDonald Grading Company  
Monsanto  
Mr. Vance B. Neal  
New Jersey State Golf Assoc.  
North Carolina National Bank  
Mr. & Mrs. David L. Padgett  
B.S. Pankey  
Mr. Joseph Pereira  
Pilot Club of Fayetteville  
Pilot Lions Club  
Mr. John Poulos  
Mr. & Mrs. William R. Price  
Dr. Vergil E. Queen  
Dr. Janette S. Rosenberg  
Sayville Public Schools  
Mr. Robert H. Short  
Mr. Timothy R. Smith  
Southeastern Hospital Supply  
Southside Food, Inc.  
Mr. Marlin M. Stewart  
Mr. Dan H. Stout  
Lt. Colonel & Mrs. Walter M. Swing  
Thomas Realty  
Trinity High School Athletic Boosters Club  
Valley Motors, Inc.  
W. S. Wellons Realty, Inc.  
Mr. Joe W. Walker  
West Fayetteville Rotary Club  
Mr. Stephen M. Whilden  
Mr. David T. Woodard  
York County Junior

## GREEN & GOLD CIRCLE

AAA Glass Company  
Mr. Chester J. Andrews  
Mr. Von Aury, Jr.  
Bass Air Conditioning  
Ms. Mary R. Bass  
Mrs. Gillie Benstead  
Mr. James Spencer Birdsong  
Lt. Colonel M. Wilkey Blackwell, (Ret.)  
Mrs. Linda Bruton Bourland  
Broadwell Land Company  
Bryan Pontiac-Cadillac Company  
Bullard Furniture Company  
Mr. & Mrs. James P. Butler  
Cablevision of Fayetteville  
Cape Fear Supply  
Cargill, Incorporated  
Mrs. Charlotte Carmine Centura Bank  
Dr. Suzan K. Cheek  
Mr. James C. Cherry  
Mr. & Mrs. John F. Chilton, III  
Mr. Jerome B. Clark, Jr.  
Mr. Alan Coheley  
Mr. Norman A. Coltrane  
Mr. Robert H. Cooper  
Mr. & Mrs. Neill A. Currie  
Dr. Anthony J. DeLapa  
Mr. & Mrs. George Thomas Dent  
Mrs. Mildred Dexter-Rosell  
Mr. Eugene B. Dillman  
Duplin County Schools  
East Coast Fed. Savings Bank  
Entre Computer Center  
Mr. Fred Epeley  
Mr. & Mrs. William Paxton Estes  
Fayetteville Business & Professional Women  
Fayetteville Rotary Club  
Fayetteville Area Chapter  
National Assn. of Accountants  
Fiber Industries  
Mr. & Mrs. Steve Floyd  
The Foundation of Greater Greensboro  
Franklin County Schools  
General Board of Higher Education & Ministry UMC  
Gorham Bronze  
Mr. Roy J. Haddock  
Mr. & Mrs. Charles T. Haigh, Jr.  
Ms. Betty U. Hasty  
Mr. Thomas S. Hatfield  
Healy Wholesale Company  
Heritage Fund of Bartholomew/County, Inc.  
Home Federal Savings & Loan  
Hurst Annaho  
Hutson Typewriter Company  
Kenny Novak Memorial Fund  
Mr. & Mrs. Baxter J. Kiger  
Mr. James M. Kizer  
Lee Hyundai, Inc.  
Major Appliance Company, Inc.  
Ms. Sonya McCune  
Mr. & Mrs. Marcus G. McKnight  
Moorman & Kizer, Inc.  
N.C. Society of Accountants  
Mr. James B. Noe  
Mr. & Mrs. J. Harvey Oliver, Jr.  
Order of the Eastern Star  
Mr. & Mrs. Roger Durham Pait  
Mr. W. Daniel Pate  
Dr. Robert Frederick Pelham  
Rev. Scott W. Pety  
Ms. Margaret La Jeanne Pierce  
Rev. Dr. William M. Presnell  
Miss Katharine Purdie  
Mr. Francis Patterson Quantz  
R.H.S. Parent Teachers Student Assoc.  
Mr. David Radford  
Raleigh Dist United Meth. Men  
Reed-Lallier Chevrolet  
Reid, Lewis, & Deese, Nance  
Ms. Sara Rogers  
Mr. Charles G. Rose, Jr.  
Mr. D. P. Russ  
Ms. Linda J. Salcito  
Mr. George Anthony Small  
Mr. Jesse C. Smith  
Smithboro Furniture Company  
Southern National Bank  
Stevcoknit  
Mrs. Marie T. Stewart  
Mr. Harold J. Sturdivant  
Mrs. Ann Sutton  
Mr. M. R. Teer  
Mr. W. Lyndo Tippett, CPA  
Townsend Real Estate

United Carolina Bank  
Wachovia Bank of N.C.  
Mr. & Mrs. Thomas Walden  
Mr. Stephen Walker  
Mr. M. J. Weeks  
Mr. David G. Wilson  
WKML  
The Womens Club  
Mr. Wilson Yarborough, Jr.

## CENTURY CLUB

Acc Pawn Shop  
Mr. Maness I. Adcox  
Agnes Adcox Home  
Mr. & Mrs. James M. Akridge  
Ms. Margaret S. Alexander  
Allison UMC  
Mr. & Mrs. Jerry L. Alphin  
Ms. M. Nancy Anderson  
Ms. Mary Ann Angelicchio  
Antioch Baptist Church  
Arrow Exterminators of Fay., In  
Mrs. Thelma B. Avent  
Bahia's, Inc.  
Rev. Wilson Edward Barber  
Mr. Frank Barragan, Jr.  
Mrs. Bernice P. Barrett  
Mr. Bryan Beckwith, Jr.  
Mr. & Mrs. Robert M. Bennett  
Mr. William H. Billings  
Billy Bill's Grading Company  
Mr. W. A. Bisette  
Mr. & Mrs. John V. Blackwell, Jr.  
Mr. Graham B. Blanton  
Mr. Bobby Bleecker  
Mr. Robert W. Bloodworth  
Boulevard Pawn Shop  
Mrs. Josephine S. Boyd  
Bragg Pawn Shop  
Judge & Mrs. E. Maurice Braswell  
Mr. Harry Lee Britt, Jr.  
Mr. Hal W. Broadfoot  
Mr. & Mrs. John Brophy  
Mr. Edwin N. Brown, Jr.  
Mr. John Wayne Brown  
Rev. Wesley Freeland Brown  
Mr. Dennis Luther Bruce  
Dr. Joseph Brum, Jr.  
Mr. A. B. Bryant  
Mr. & Mrs. John G. Buie, Jr.  
Buie, Norman & Co.  
Butler Electric Supply of Fay.  
CW4 & Mrs. Harry J. Byard  
Mr. Wade E. Byrd  
Mr. Levie C. Cameron  
Mr. Henry C. Campen  
Ms. Ruby J. Campen  
Bishop William Cannon  
Cape Fear Amateur Radio Socy.  
Carolina Motor Club, Inc.  
Carolina Power & Light  
Mrs. Lynn Moore Carraway  
Mr. Aubrey Wayne Carter  
Mrs. Sandra Matthews Carter  
Mr. & Mrs. Brian Cash  
Mrs. Patricia M. Cashion  
Cashwell Appliance Parts, Inc.  
Mr. Robert J. Chaffin  
Ms. Mithu Chaudhuri  
Mrs. Isabel L. Christian  
Chums, Inc.  
Citizens' Scholarship  
Dr. Franklin S. Clark  
Mrs. Mary Pride Clark  
Mrs. Beverly D. Cleverley  
Dr. & Mrs. Charles Q. Coffman  
Mr. & Mrs. C. Wayne Collier  
Concrete Service Co., Inc.  
Consumers Title Company  
Mrs. Louise Council  
Mrs. Duke B. Crane  
Crescent City High School  
Mr. Robert Grigler  
Rev. Helen G. Crotwell  
Mr. Russell C. Crowell  
Cumberland County Schools  
Mr. & Mrs. Richard B. Curtin  
D. K. Taylor Oil Company, Inc.  
Damascus Lodge  
Dr. C. T. Daniel  
Mr. James Andrew Davis, Jr.  
Ms. J. Lois Dawson  
Mrs. Kay R. Demyant  
Mr. John G. Dicks, III  
Dixie Pawn Shop-Military Supp.  
Ms. Joy Heyward Downing  
Mr. Judith Cushman Dubose  
Mrs. C. C. Duell  
Dunn's Nursery & Garden Shop  
Econo Lodge I-95  
Mr. Maurice W. Elliott  
Dr. & Mrs. Gerald Ellison  
Employee Benefit Systems, Inc.  
Eutaw Shopping Center  
Express Stop Stores  
Faircloth Accounting Service  
Fasco Industries, Inc.  
Fay. Coca-Cola Bottling Co.  
Fayetteville Generals  
Fayetteville Lighting, Inc.  
Finch Oil Company  
Mr. Herbert Finger, Jr.  
Mr. & Mrs. James F. Fink  
Mr. Emmet Wilson Fisher, Jr.  
Mrs. Nona D. Fisher  
Dr. & Mrs. Malcolm Fleishman  
Dr. Stephen B. Fleishman  
Floral Arts, Inc.  
Mr. Carl D. Ford, Jr.  
Mrs. Helen C. Foster  
Dr. Loleta W. Foster  
Francis Ouimet Caddie  
Mr. & Mrs. Arthur Frutchey  
G & K Cleaning Service, Inc.  
Dr. & Mrs. E. C. Garber, Jr.  
Dr. & Mrs. F. S. Gardner, Jr.  
Mr. John M. Gillis  
Mr. & Mrs. Howard F. Godfrey  
Rev. Ray Thomas Gooch  
Mr. John J. Grandefield  
Mrs. Winifred McBryde Grannis  
Mr. & Mrs. Gordon B. Guess  
Dr. C. Arnal Guzman  
Mr. Owen A. Hager, II  
Ms. Margaret C. Haigh  
Mr. Phil W. Haigh, Jr.  
Haire Plumbing Company, Inc.  
Mr. Swayn G. Hamlet  
Mr. & Mrs. James S. Harper  
Mrs. Mary Johnson Hart  
Hawley's Camping Center, Inc.  
Mr. Timothy Alan Helms  
Mr. John T. Hensley  
Dr. Hal Henschen  
Mr. Gordon B. Herbert  
Mr. Philip E. Hershey  
Mr. L. Sneed High  
Highland Lumber Company  
Mr. James Daniel Highsmith  
Mrs. Brenda Herring Hiltner  
Hodges Associates, Inc.  
Ms. Nancy M. Hodges  
LCDR George Thomas Holland  
Holmes Electric, Inc.  
Mr. Henry Holt  
Mrs. Sara Hood  
Mr. & Mrs. Wallace R. Horton  
Dr. William E. Howler, Jr.  
Hubbard Pipe & Supply, Inc.  
Mr. David S. Hunter  
Dr. Jack M. Hunter  
Mr. & Mrs. Arthur P. Hurr  
Miss Dorothy G. Hutaff  
Mrs. Patricia D. Hutaff  
Mr. Quincy A. Hutson  
Mr. & Mrs. Leland G. Jackson  
Mr. Joel S. Jenkins  
Jernigan & Warren Funeral Home  
John White Drugs  
Mr. & Mrs. Kevin Joseph Jorgenson  
Mr. I. B. Julian  
Kelly Springfield Tire Company  
Ken C. Lancaster Real Estate  
Mr. Mark C. Kendrick  
Mr. John Kennedy  
Mrs. Virginia Knox Kern  
Kings Point Mfg. Company  
Mr. Lewis M. Koch  
Mrs. Lynn Morton Kubota  
Kyle Roofing Company, Inc.  
LaFayette Motor Sales, Inc.  
Lake Stevens School District  
Ms. Lois J. Lambie  
Mrs. Carolyn A. Lancaster  
Miss Rosemary Joyce Lands  
Mrs. Barbara A. Lawson  
Mr. Sydne C. Lenox  
Leon Sugar's Men Shop  
Ms. Mary F. Lewter  
Mrs. Jean C. Liles  
Ms. Willa Long  
Mr. James Francis Loschivo  
Lowe's Charitable & Ed. Found.

Mr. F. Royal Loyd  
The LSV Partnership  
Mr. & Mrs. Ed Maness  
Mr. Larry E. Martin  
Mr. Thomas Harvey Matthews  
Mr. & Mrs. Daniel H. Maxwell  
Dr. Charles R. May, III  
Dr. Clyde G. McCarver  
Mr. & Mrs. Donald W. McCoy  
Mr. Robert O. McCoy  
Mrs. Martha McCracken  
McDonald Lumber Company, Inc.  
McFadyen Music Company  
Dr. & Mrs. Oscar L. McFadyen, Jr.  
McGeachy & Hudson Attorneys  
Mr. Paul Andrew McKee, Jr.  
Miss Martha Regina McLaurin  
Mr. Thomas R. McLean  
Mr. Joe McLeod  
Dr. Samuel D. McMillan, Jr.  
Mr. Percy R. Measamer  
Mr. Taylor M. Melvin  
Merrill Lynch Peirce Fenner & Smith  
Mrs. Betty H. Messer  
Methodist College Veterans Club  
Dr. Assad Meymandi  
Dr. Miller & Mrs. Blackwell  
Ms. Martha J. Miller  
Mrs. Betty L. Milligan  
Bishop C. P. Minnick, Jr.  
Mrs. Cheryl C. Mitchell  
Mr. William T. Moore  
Mrs. Susan G. Motes  
Mrs. William J. Mullen  
N.C. Dist. Pilot Association  
N.C. Gamma Sigma Chapter  
New Rainbow Restaurant  
Newark High School  
Mr. & Mrs. Robert E. Nimocks  
Northside Chiropractic Clinic  
Northern Ohio Caddie Foundation  
Mr. Patrick Murphy O'Brian  
Mrs. Virginia Thompson Oliver  
One Hour Kolorizing, Inc.  
Osborne Glass Company, Inc.  
Mrs. JoAnna Cherry Palumbo  
Mr. Alton C. Parker  
Mr. & Mrs. Jon Parsons  
Dr. & Mrs. Baxter W. Paschal  
Mr. John C. Pate  
Mr. & Mrs. Carlton W. Paugh  
Mr. William I. Perry  
Mr. & Mrs. William P. Pleasants, III  
Mr. Carter C. Pope  
Captain Onin Bert Powell  
Mr. Bruce R. Pulliam  
Dr. Sam Ragan  
Mr. & Mrs. Richard W. Rakotz  
Ready Mixed Concrete  
Refrigeration & Heating Co.  
Mr. Paul C. Reinert  
Mr. Riddick Revelle  
Rhudy's, Inc.  
Mr. & Mrs. Ronald Roegiers  
Rogers & Breece, Inc.  
Dr. & Mrs. Otto Rogers  
Mr. & Mrs. Jon F. Roncace  
Round-A-Bout Skating Center II  
Mr. & Mrs. Allan R. Rubin  
Mr. & Mrs. Albert E. Rummins  
Mr. Richard C. Ryan  
Mr. & Mrs. Louis Safley  
Rev. Michael Wayne Safley  
Seventy First High School  
Mr. & Mrs. Louis E. Seymour  
Mr. & Mrs. William R. Sharp  
Dr. & Mrs. Frank S. Shaw  
Mr. John G. Shaw  
Dr. Richard Sherff  
Mr. Geoffrey K. Sherman  
Dr. C. F. Siewers  
Mr. Roger Gale Simmons  
Rev. Adolph C. Smith  
Dr. & Mrs. Charles M. Smith  
Mrs. Sue James Smith  
Mr. & Mrs. Alfred E. Smyntek  
Mr. Michael Sokalski  
Southern Gin & Grain Company  
Specialized Printed Forms, Inc.  
Mr. Charles M. Speegle, Jr.  
The State Bank of Fayetteville  
Dr. & Mrs. Albert Stewart, Jr.  
Mr. G. Craig Stewart, III  
Mr. Joe Stilwell  
Mr. Benjamin Franklin Stone  
Mrs. Carol Hardee Stout



# ANNUAL GIVING REPORT

Stout Properties, Inc.  
 Ms. Ruby M. Strouse  
 Miss Mary Lou Suddath  
 Mr. Daniel H. Switch  
 Mrs. Teresa Self Swain  
 Ms. Katherine W. Sweeney  
 Ms. Elizabeth O. Sweet  
 Mrs. Margaret K. Swink  
 Mr. & Mrs. Kenneth H. Sykes, Jr.  
 Mrs. Lura S. Tally  
 Dr. & Mrs. Robert B. Taylor  
 Mr. & Mrs. Gerald A. Teele  
 Mr. Gilbert M. Thomason  
 Mrs. Frances Graham Thorne  
 Tile Inc. of Fayetteville  
 Tim Newton Real Estate  
 Todd, Rivenbark & Puryear  
 Tom J. Keith & Associates  
 The Trophy House, Inc.  
 Mr. R. Wayne Trousdale  
 Mrs. Terri Union  
 United Methodist Women  
 Calvary United Methodist Church  
 V-Point Grocery  
 Rev. Kenneth S. Valentine  
 Valley Eye Clinic  
 Vanstony-Exum Insurance  
 Mr. & Mrs. C. H. Von Rosenberg  
 Rev. Randy L. Wall  
 Mr. John David Walsh  
 Dr. James X. Ward  
 Mr. & Mrs. George H. Waren  
 Mrs. Sandra Waren  
 Mr. James R. Warner  
 Mrs. Trudi J. Waters  
 Mr. L. Stacy Weaver, Jr.  
 Mr. William S. Wellons, Jr.  
 Dr. & Mrs. Charles L. Wells  
 Rev. & Mrs. Woodrow Wells, Jr.  
 Ms. Sandra A. Wheeler  
 Mr. Richard M. Wiggins  
 Mrs. Neill Wilkins  
 Williams Printing  
 Mr. Thomas W. Williams, Jr.  
 Ms. Linda Wilson  
 Rev. & Mrs. Gilliam P. Wise  
 Mr. Douglas E. Wolfgang, Jr.  
 Mr. & Mrs. C. Fletcher Wombel  
 Yarborough Motor Company  
 Mrs. Jean Raddliff Young  
 Mr. Patric S. Zimmer

## BELL TOWER CLUB

Able Plumbing & Pipe Co., Inc.  
 Mrs. Linda Eurey Ackerson  
 Ad-Ons  
 Ms. Helen C. Adams  
 Adams Real Estate  
 Ms. Alice E. Addleton  
 Mr. Kyle Joseph Adrian  
 Dr. Wahaj D. Ahmad  
 Mrs. Teresa Poole Akamatsu  
 Mr. & Mrs. James J. Akridge  
 Ms. Jennifer Akridge  
 Ms. Valarie Akridge  
 Mr. David Banks Alabaster  
 Ms. Agnes Alexander  
 Ms. Juddeth Allen  
 Mr. David W. Allred  
 Colonel & Mrs. Ronnie D. Alton  
 Mr. Daniel Alvarez  
 Mrs. Gail Alvarez  
 Ms. Ruth Gilmore Ambrose  
 American Speedy Printing Cent.  
 Mrs. Dory Kestner Anderson  
 Mrs. Dorothy C. Anderson  
 Ms. Effie Jeanette Anderson  
 Ms. Barbara H. Antal  
 Aqua-Nut Dive Service, Company  
 Mrs. Linda Archer  
 Mr. William Stratton Arliss  
 Mr. Scott W. Armentrout  
 Arran Realty, Inc.  
 Mrs. Marilyn Evoy Atkinson  
 Mr. William L. Aycock  
 Rev. Dr. James H. Bailey  
 Mrs. Carolyn Marks Baldwin  
 Ms. Myrtle Baldwin  
 Mr. & Mrs. Charles M. Balyeat  
 Mr. John Baranowski  
 Mrs. Carolyn P. Barbour  
 Ms. Kimberly A. Barefoot  
 Mrs. Mary Alice Barefoot  
 Mr. & Mrs. Bradley R. Barrett  
 Mr. Malvern Spencer Barrow, III  
 Mr. Joseph Jack Bartanus

Mr. & Mrs. Reginald M. Barton, Sr.  
 Mrs. Susan M. Baty  
 Mr. Ronald Dean Baucom  
 Rev. Philip Edward Baugues  
 Mrs. Lynda Buie Baum  
 Mr. Michael Christopher Baush  
 Mrs. Donna Stewart Beaman  
 Mr. Guy Baker Beatrice, Jr.  
 Mrs. Debbie Bright Beavers  
 Mr. Stewart Bell  
 Mrs. Martha Benfield  
 Mr. George David Benham  
 Mrs. Brenda F. Benjamin  
 Rev. Nancy Ruth Best  
 Bethany UMC  
 Mrs. Judy Bethard  
 Mr. & Mrs. Willard Bieler  
 Mrs. Towanna O'Neal Bigford  
 Mr. Carl Christian Birk  
 Mr. & Mrs. James L. Bishop, III  
 Ms. Rina Janey Bishop  
 Mr. James C. Black  
 Rev. Randy Coy Blanchard  
 Mr. James Blanton  
 Mrs. Margaret K. Bledsoe  
 Mr. Darrell D. Bock  
 Mr. & Mrs. David Bock  
 Mr. Randy Lee Bolding  
 Ms. Joy A. Bonhurst  
 Mrs. Grace Ellen Bonvik  
 Mrs. Kathy Richardson Borrelli  
 Mr. William Edgar Bowden  
 Mr. Barry Arnold Box  
 Dr. & Mrs. Basil M. Boyd  
 Mrs. Olivia Godwin Bradley  
 Mrs. Jean Fort Braford  
 Mr. & Mrs. John David Braswell  
 Ms. Annie Brayboy  
 Mr. William H. Breeden, Jr.  
 Mr. Samuel Henry Brick, III  
 Ms. Polly Ann Bridge  
 Briggs & Sons  
 Mr. Richard Clark Briggs, Jr.  
 Mr. Alfred Paul Brill, III  
 Miss Sharon Britten  
 Mr. & Mrs. Dohn Broadwell  
 Ms. Nancy W. Broadwell  
 Mrs. Elice Marie Brooks  
 Mrs. Helen Kathy Brown  
 Mrs. Jo Anna Walker Brown  
 Ms. Josie Brown  
 Mr. Leon E. Brown  
 Mr. Roy E. Brown  
 Rev. Vernon Weaver Brown, III  
 Mr. Jefferson D. Bruton  
 Mrs. Catherine Bryant  
 Ms. Mary Jo Bryant  
 Ms. Janet K. Buffaloe  
 Mrs. Donna M. Bullard  
 Mr. & Mrs. Louis C. Bullard  
 Mr. Thomas McLauren Bullard  
 Mrs. Betty Graham Bunce  
 Mr. & Mrs. William D. Bunce  
 Mrs. Kathryn G. Bundy  
 Mrs. Betty Burke  
 Ms. Elouise Burris  
 Mrs. Meredith Stone Cade  
 Cain & Cain  
 Mr. Turner Foster Caldwell  
 Mrs. Julie E. Callahan  
 Mrs. Susan Kerr Callahan  
 Mr. John F. Campbell  
 Ms. Kelly Ann Canney  
 Mr. & Mrs. George P. Cap  
 Cape Fear Animal Hospital  
 Captain Jim's Seafood Shack  
 Rev. Edward Holmes Carl  
 Mr. Michael James Carpenter  
 Mr. Andre Carson  
 Mr. George E. Carter  
 Ms. Janet L. Carter  
 Mr. Lester G. Carter, Jr.  
 Mr. Michael Lewellyn Casey  
 Mr. Joseph A. Castner  
 Caviness & Tolbert  
 Ms. Anita-Lynn Cechowski  
 Mr. John W. Chance  
 Mr. Pruvus Chapel  
 Mr. & Mrs. Pete Malloy Chason  
 Ms. Karin J. Cherry  
 Dr. Robert S. Christian  
 Mr. & Mrs. A. Wilbur Clark  
 Mr. & Mrs. David S. Clark  
 Ms. Guyla D. Clark  
 Dr. JoAnn Clark  
 Ms. Martha Clark  
 Mr. Steven Clary

Mr. Joe Clayton  
 Mr. & Mrs. Alfred E. Cleveland  
 Ms. Charlotte S. Cobeley  
 Cokesbury UMC  
 Mrs. Christy Cole  
 Ms. Donita Coleman  
 Collier Gas Company  
 Mrs. Lucy S. Collier  
 Mr. & Mrs. Glen G. Collins  
 Dr. Kenneth Collins  
 Mr. & Mrs. Ernest L. Conner  
 Ms. June Marie Connor  
 Mr. & Mrs. D. Keith Cook  
 Mr. Lang Cook

Mr. Gary S. Elefante  
 Mr. John Kenyon Elkins  
 Mr. Jimmy Ray Elledge  
 Elliot Construction Company  
 Mr. & Mrs. William Ellison  
 Ms. Ruth K. Engel  
 Mr. Andrew Ennett, III  
 Mrs. Vickie Ozell Erben  
 Dr. Maria C. Eribal & Mr. Michael L. John  
 Ernie Lee's Oil Company  
 Mrs. Victoria Etheridge  
 Mr. Bruce Everett  
 Mr. H. Ray Fann

Dr. Lewis B. Hardison  
 Mr. John S. Harnsberger, Jr.  
 Mr. Cordelle Harper  
 Mr. & Mrs. M. Harrell  
 Harrell's Radiator Shop, Inc.  
 Rev. Claudia Gail Harrelson  
 Mrs. Creacy Harrington  
 Mr. J. C. Harris, III  
 Ms. Marie-Therese Harris  
 Mrs. Melissa B. Hart  
 Mrs. Pamela G. Hart  
 Dr. A. H. Hartness  
 Mrs. Marcia Faye Hasie-Daniels  
 Colonel Clark Wavely Hastings  
 Mrs. Ann C. Hatcher  
 Mrs. Mary Haugh  
 Mr. E. Lee Hauser  
 Hayes Hobby House, Inc.  
 Mr. Henry Heath, Jr.  
 Mrs. Hilda W. Hemby  
 Dr. Melvin Henderson  
 Mrs. Henderson  
 Mrs. Zula High  
 Mr. & Mrs. Delano R. Hill  
 Mr. Rodney F. Hobbs  
 Mr. Roger B. Hobgood  
 Ms. Pamela Sue Hoff  
 Holiday Inn Bordeaux  
 Mr. Jonnie Bruce Hollingsworth  
 Mr. John F. Holmes  
 Homemakers Furniture Interiors  
 Mr. Jack R. Honeycutt  
 Mr. Daniel Hood  
 Mr. Arthur G. Hooper  
 Mrs. Renna Hooper  
 Mrs. Judy Horne  
 Mr. Reid Anthony Horne  
 Mr. & Mrs. Eugene Howard  
 Ms. Ruth A. Hoyle  
 Mrs. Dorothy Hubbard  
 Mr. Elmer Charles Hubbard  
 Mrs. Debbie Hunt  
 Hunter Brothers  
 Mr. John W. Hurley  
 Mr. & Mrs. Henry G. Hutaff  
 Mr. Clarence C. Ingram  
 Ms. Susandra Isler  
 J. Starling Photography  
 Mrs. C. W. Jackson  
 Mrs. Myra Jackson  
 Ms. JoAnne Jones James  
 Mr. Laurie Alston Jennings  
 Joe Strickland Realty  
 John's Flowers & Gift Shop  
 Mrs. Brenda K. Johnson  
 Mr. Lee Johnson  
 Ms. Lisa A. Johnson  
 Mr. Michael Henry Johnson  
 Mr. Monroe Johnson  
 Mr. Jimmy Jolly  
 Mrs. Ida P. Jones  
 Mr. & Mrs. Jarvis D. Jones, Jr.  
 Dr. & Mrs. John R. Jones  
 Ms. Susan Jones  
 Dr. Thomas H. Jones  
 Ms. Virginia Jones  
 Mr. John Alfred Jordan  
 Mrs. Marjorie M. Jordan  
 Dr. Weldon H. Jordan  
 Mr. Arnold Joyner  
 Mrs. Gail Harrison Joyner  
 Mr. & Mrs. William Julian  
 Rev. & Mrs. Jerry J. Juren  
 Ms. Susan Justice  
 Mrs. Laura Jean Kamionka  
 Ms. Jo Eva Keebaugh  
 Mr. Allen S. Keene  
 The Honorable Beth Keever  
 Mr. & Mrs. A. Scott Kelly  
 Mrs. Gayle Rogers Kent  
 Mr. & Mrs. Keith Allen Kildow  
 Mrs. Anita Fisher King  
 King Discount Rentals  
 Mrs. Dorothy King  
 King Electric of Fayetteville  
 Mrs. Dorothy C. Kirkpatrick  
 Mr. James M. Kizer, Jr.  
 Mr. John H. Klein, Jr.  
 Mrs. Beulah Knarr  
 Rev. Dr. Garland Knott  
 Mr. Frederic John Koch  
 Dr. Steven H. Kouba  
 Mrs. Dagna Ellen Kuehl  
 Ms. Joy Carruth Kuhar  
 Mrs. Ruth Kurz  
 Mrs. Naomi Kutsch  
 Mrs. Susie Kutsch

**EVERY EFFORT HAS BEEN MADE TO ENSURE THAT THIS REPORT IS COMPLETE AND CORRECT. IF WE HAVE OMITTED A NAME OR MISPELLED ONE, WE APOLOGIZE AND HOPE YOU WILL LET US KNOW.**

Mr. Owen W. Cook  
 Woody R. Copeland  
 Ms. Brenda Corbett  
 The Corner Cafe  
 Mr. William J. Costin, Jr.  
 Mr. Eugene Robert Cote  
 Colonel Cleatus J. Cox, (Ret.)  
 Mrs. Dianne Vann Cox  
 Mrs. Bonnie Herring Crabtree  
 Lt. Gregory S. Creech  
 Mr. Dwight Eugene Cribb  
 Rev. Jerry Wayne Cribb  
 Mr. William B. Crompton, III  
 Mrs. Ruth Rushton Crumley  
 Colonel Oliver C. Culbreth, (Ret.)  
 Cumberland Furniture, Inc.  
 Mr. Burhl Cunningham  
 Ms. Edna W. Curl  
 Mr. & Mrs. Daniel F. Currie  
 Mrs. Marion Currie  
 Ms. Mary Currier  
 Cuts & Curls, Plus  
 Mrs. Linda Allvord Damminger  
 Mr. Kenneth Daniel  
 Mrs. Mendee Hawley Daniel  
 Mr. Terry F. Daniels  
 Mr. Carroll L. Davis  
 Ms. Sharmen Davis  
 Mrs. Sylvia Brown Davis  
 Mr. Robert G. Dees, Jr.  
 Ms. Jeanette Christine Dell  
 Mr. George F. Dempsey  
 Mrs. Patricia Griggs DeNeal  
 Mr. John Denning  
 Department of North Carolina  
 Disabled American Veterans  
 Mrs. Mary M. Deprater  
 Mr. James Wesley Dickens  
 Ms. Gail Dickinson  
 Ms. Doty Dilday  
 Miss Laura Sullivan Dilworth  
 Mrs. Jody L. Dirks  
 Mr. James Lee Dodrill  
 Rev. Leonard F. Doucette  
 Mrs. Lucy J. Douglass  
 Mr. Stanley Dousey  
 Dowless Christmas Tree Farm  
 Mr. James C. Draine  
 Dr. David E. Drake, Sr.  
 Mr. Stephen Driggers  
 Ms. Dorian Elizabeth Droegge  
 Mr. & Mrs. Bob Dubbe  
 Mrs. Susan Dugan  
 Ms. Nell Duncan  
 Mr. Sterling Duncan  
 Dr. Edward L. Dunn  
 Dr. & Mrs. Thomas E. Durr  
 Mr. Cyrus P. Earnhardt, Jr.  
 Ms. Sheila Eason  
 MSGT & Mrs. George A. Ebert, (Ret.)  
 Mr. & Mrs. Roy S. Eckert  
 Mr. & Mrs. Stanley Eckert  
 Mrs. Claire Alyce Turner Edge  
 Mr. & Mrs. Sam R. Edwards  
 Mr. Randy Esegian  
 Mrs. Karen Jones Ehle

Mr. Terry E. Farr, Sr.  
 Mr. Henry Bynum Farrell, III  
 Cw3 & Mrs. James R. Faucette  
 Mr. William Franklin Faulkner  
 Mr. Charles Linwood Ferrell  
 Mrs. Susan Keeth Fertel  
 Ms. Deborah Fisher  
 Mr. & Mrs. Peter C. Fisher  
 Mr. Gary S. Fleck  
 The Flora Company  
 Mr. David Earl Flowers  
 Mr. Claude Earl Floyd  
 Mrs. Rita J. Foley  
 Ms. Mary J. Foreman  
 Fortune Magazine  
 Mr. David Lee Foster  
 Mrs. Billie Kelly Foushee  
 Mr. D. P. Froneberger  
 Fuller Oil Company  
 Mr. Nelson Garcia  
 Mr. Jimmy Garrell  
 Dr. & Mrs. George F. Gee  
 General Business Services  
 Mrs. Annabell George  
 Ms. Penny Cheryl George  
 Mr. Robert L. Giannini, III  
 Dr. Kevin J. Gill  
 Ms. Cynthia Ann Gilliam  
 Mr. J. D. Gilliam  
 Mr. Michael Wayne Gillmer  
 Mr. Clifford J. Gissell  
 Mr. Ronald Roy Glancy  
 Mr. George T. Gleason  
 Mrs. Kimberly J. Goad  
 Mrs. Patsy J. Gordon  
 Mr. Charles E. Gossage  
 Mrs. Gail Outlaw Graham  
 Ms. Marion Janet Graham  
 Mrs. Mildred Y. Grant  
 Mrs. Katherine Henrietta Grasso  
 Mrs. Joan Hobbs Gray  
 Green Tree Inn, Inc.  
 Mr. E.W. Greene  
 Mr. Mickey Greene  
 Mr. Roger W. Gridler, Jr.  
 Mrs. Celia Abernethy Griffin  
 Mr. Robert Warren Griffin  
 Ms. Bonnie Starnes Griffith  
 Mr. Walter Henry Grimsley  
 Mr. Paul D. Grove  
 Mr. Samuel P. Guy  
 Mr. & Mrs. Danny Franklin Hagans  
 Mr. Billy Hagard  
 Mr. & Mrs. Phillip M. Haile  
 Mr. & Mrs. Leamon J. Hall  
 Mrs. Linda Carlson Hall  
 Mrs. Lois B. Hall  
 Mrs. Willisteen Dudley Hall  
 Mrs. Ann Young Hampton  
 Mrs. Anne B. Hanson  
 Mr. John Joseph Haracivet, Jr.  
 Mr. Steven Helms Harden  
 Mr. Alan Hardin  
 Mr. Eugene Hardin  
 Mr. & Mrs. Jerry Hardin  
 Mrs. Nina Marie Harding

# ANNUAL GIVING REPORT

Ms. Lauren Michelle Kvach  
 Mr. & Mrs. Evan Hardy Lacy, III  
 Mrs. Deborah B. Lallier  
 Mrs. Patricia Horne Lancaster  
 Rev. James Robert Lancaster, Jr.  
 Mr. Curtis Lancaster  
 Ms. Lisa Vigoletti Lange  
 Mr. Jackson L. Langley  
 Larry's Sausage  
 Mr. Robert L. Larsen  
 Mr. & Mrs. Joseph J. Lassiter  
 Mr. Ron LaVoie  
 Mr. Frank K. Layton, Jr.  
 Mr. Donald Leatherman  
 Mrs. Faye Leavy  
 Mr. Loran Eugene Leck  
 Mr. & Mrs. Nelson Lee  
 Mrs. Lynn Legatski  
 Mr. Jason Sean Leinheiser  
 Colonel Alfred Lemire, (Ret.)  
 Mrs. Jean Lemke  
 Dr. & Mrs. Julian C. Lentz, Jr.  
 Mrs. Melva Lewis  
 Mr. Randy Lewis  
 Mr. Richard M. Lewis, Jr.  
 Liberty Point Chapter  
 Mr. Richard Bellmore Lindner  
 Ricky L. Lindsley  
 Mr. & Mrs. William M. Lineberger  
 Mrs. Linda Burns Lingerfeldt  
 Hazel G. Linn  
 Mr. & Mrs. Greg Liss  
 Little & Pulley Office Machine  
 Mr. David J. Little  
 Mr. William Foster Little, III  
 Mrs. Patricia McCallum Livingston  
 Lizzie Lamb Bible Class  
 Dr. Robert J. Logel  
 Ms. Phyllis J. Long  
 Mr. Cabell Luck, Jr.  
 Mr. & Mrs. Larry Lugar  
 Mr. Thomas C. Mack  
 Rev. & Mrs. John Talton Madison,  
 Ms. Carla Jo Maldonado  
 Mr. Charlie Malloy  
 Mrs. Diane Mann  
 Mr. Leon Mann  
 Rev. Victor C. Mansfield, II  
 Mr. Robert Wesley Marrs  
 Mrs. Elaine Forbes Marshall  
 Mr. & Mrs. Carroll Martin  
 Mrs. Margaret Adams Martin  
 Mrs. Theresia Howland Mask  
 Miss Judith Ann Mason  
 Mr. Brent Alfred Matthews  
 Mr. Charles Mauney  
 Mr. & Mrs. David Maxwell  
 Dr. Harold E. Maxwell  
 Mr. & Mrs. J. Kenneth Maxwell  
 Mrs. Claudia Hawthorne May  
 Mr. Bobby Clifton McAlpin  
 Ms. Dorothy McCaulley  
 Dr. Thomas M. McCutchen, Jr.  
 Rev. James Richard McDowell  
 Dr. & Mrs. Douglas S. McFarlane  
 Mr. James Ralph McFayden, Jr.  
 Dr. T. Pinckney McIlwain  
 Mr. Charles McKay  
 Mr. Ronald McKay  
 Mr. Kandle D. McKeel  
 Mr. Charles Stephen McLamb  
 Ms. Jocee E. McLaurin  
 Mr. Loche A. McLean  
 Mr. & Mrs. Lenwood McNair  
 Mr. Ronald McNair  
 Mr. & Mrs. W.V. McNair  
 Captain William Robert McNeill, Jr.  
 Ms. Sandra McNight  
 Dr. Linda Carol McPhail  
 Mr. Wilson Terry McPherson  
 Mr. Glen Earl Meade, Jr.  
 Mr. Jerry Meadows  
 Mr. & Mrs. John A. Mebane  
 Mr. Harvey Dale Meeks  
 Mrs. Amanda Mellinger  
 Mr. L. Richard Meissner, Jr.  
 Rev. Benjamin Ray Melvin  
 Mr. Donald Melvin  
 Mr. Elmer R. Midgett, Jr.  
 Mrs. Lynn Evans Midgett  
 Military Pawn Shop  
 Dr. Dudley Miller  
 Dr. Mary Emily Miller  
 Ms. Jane Allen Miller  
 Mr. Jeffrey D. Miller  
 Ms. Carole G. Miller-Seda  
 Dr. Michael Mills

Mrs. Rainelle Dixon Mishoe  
 Mr. & Mrs. John C. Mitchell  
 Mr. Michael D. Mitchell  
 Mr. & Mrs. Raymond S. Mitchell  
 Moffitt Machine Company, Inc.  
 Mr. John Monaghan, Jr.  
 Mr. Jerry R. Monday  
 Mr. Graham A. Monroe  
 Rev. Mark C. Mooney  
 Miss Anna Marie Moore  
 Mr. & Mrs. E. Ray Moore  
 Mr. Frank M. Moorman  
 Ms. Carmen Morrina  
 Ms. Valerie L. Morris  
 Ms. Lois Moses  
 Mr. Stanley Dexton Mazingo  
 Mrs. Jessica Lynn Muldrow  
 Mr. & Mrs. Gerald C. Musselwhite, Jr.  
 Miss Jan Berentson Nahinurk  
 Mrs. Tonie Neal  
 Mr. & Mrs. Charles E. Nelson  
 Ms. Karen K. Nelson  
 New Sanford Milling Company  
 Ms. Elisabeth Nimocks  
 Nix Upholstery Company  
 Mr. Larry Walton Nunnery  
 Ms. Christa M. O'Quinn  
 Mrs. Kathryn Small Offenhauser  
 Ms. Kerry Oliastro  
 Mr. Jeffrey Allen Olson  
 Mrs. Leta Smith Olson  
 Ms. Barbara Jean Overman  
 Mr. Edward Arnold Owens  
 Dr. Henry Parfitt  
 Ms. Eunyoung Park  
 Mr. Ernest Wilbert Parker  
 Ms. Shanda Parris  
 Rev. Carrie W. Parrish  
 Mr. & Mrs. Larry Wayne Parsons  
 Ms. Dorothy Patterson  
 Mrs. Rebecca H. Pattishall  
 Dr. Menno Pennink  
 Mrs. Suzanne Pennink  
 Mr. & Mrs. Monte Pepper  
 Ms. Mary M. Peppers  
 Mr. Charles Michael Perry  
 Mrs. Clarece Peterson  
 Mr. & Mrs. Mike Phelps  
 Mrs. Nancy Jean Phillips  
 Mrs. Pamela Renee Phillips  
 Mr. Larry S. Philpott  
 Ms. Carol R. Pierce  
 Ms. Virginia M. Pierce  
 Mr. Jimmy Pifer  
 Mr. & Mrs. Claude Pigott  
 Miss Helen Marie Pilikay  
 Mr. Robert Lee Plotts  
 Mr. & Mrs. Arnold Pope  
 Mr. Paul P. Pope, III  
 Mr. & Mrs. Alan M. Porter  
 Ms. Mary Posey  
 Mr. John Fletcher Poulk  
 Ms. Eleanor S. Powell  
 Dr. William C. Powell  
 Mr. & Mrs. Robert R. Pray  
 Mr. Terry D. Preiss  
 Mr. Allen Preatte  
 Ms. Katrina Preatte  
 Ms. Wanda Preatte  
 Mrs. Merle R. Prewitt  
 Mrs. Denise Marie Pribis  
 Mr. Don K. Price  
 Mrs. Sylvia Vessels Price  
 Mr. Bertie David Prince, III  
 Dr. William L. Pritchard  
 Rev. John Philip Purser  
 Mr. Hugh Oscar Queen, III  
 Mrs. Carol Quigg  
 Mr. Joseph Edward Quinn, Jr.  
 Ralph Huff Real Estate Inc.  
 Mrs. Laura Byrd Rambeaut  
 Mrs. Nancy Jean Ramsey  
 Mr. Jerry Dunlap Ransom  
 Mrs. Elaine W. Ratliff  
 Ms. Kimberly Jane Ratliff  
 Mrs. Harriet C. Ray  
 Mrs. Dorothy B. Raymond  
 Ms. Jeanne Maureen Reed  
 CW2 Kenneth W. Reese  
 Mr. Charles M. Rhodes  
 Mr. Gary D. Rhodes  
 Mrs. Janice Marcy Rhue  
 Mrs. Betsy P. Richardson  
 Mr. & Mrs. Eldon D. Riddle  
 Mr. Horace Edwin Riddle  
 Mr. John G. Roberts  
 Dr. & Mrs. Leroy Roberts, Jr.

Ms. Elizabeth Blair Robertson  
 Mr. J. Michael Rogers  
 Mr. Victor Jose Roman  
 CSM & Mrs. George D. Roraback Jr.  
 USA (Ret.)  
 Mr. Jaime A. Rosa  
 Dr. Manfred Rothstein  
 Mr. James H. Rowland  
 Rev. & Mrs. Jim Rowlette  
 Mr. & Mrs. Raymond R. Roy  
 Mr. & Mrs. Arthur P. Royal  
 Mrs. Doris Rulnick  
 Mrs. Deborah Russell  
 Mrs. Carol Ryals  
 Ms. Marion Sanchez  
 Mr. & Mrs. Paul L. Sanderford, Jr.  
 Mr. & Mrs. John J. Sarvis  
 Mr. Michael B. Saunders  
 Mrs. Peggy G. Sautter  
 Mrs. Jakkí Sawyer  
 Ms. Genevieve H. Scarboro  
 Mr. & Mrs. C. Joseph Schick  
 Ms. Mary Schlafke  
 Mr. Herbert A. Schroer, Jr.  
 Mrs. Jacqueline Scott  
 Mr. & Mrs. Wesley Seamon  
 Sears Resume  
 Sears-Roebuck Company  
 Mr. Franklin Twain Sessoms  
 Mrs. Gay Davis Seaton  
 Mr. Ira Shapiro  
 Ms. Dell Jean Sharpe  
 Mr. & Mrs. Harry S. Shipp, Jr.  
 1 Lt. Daniel Richard Short  
 Dr. John Sill  
 Mr. James Edward Simmons, IV  
 Mrs. Marilyn Gale Simons  
 Mrs. Jeanette Singleton  
 Singleton, Murray, Craven &  
 Mr. Charles William Siska, Jr.  
 Mrs. Christine G. Slappey  
 Mr. & Mrs. Wayne Sloan  
 Ms. Angela Camille Smith  
 Mr. & Mrs. Bob Smith  
 Mrs. Ella Hall Smith  
 Lt. Colonel & Mrs. Eugene Smith, (Ret.)  
 Mr. & Mrs. Garland Smith  
 Mrs. Linda Y. Smith  
 Mrs. Lynne Dawkins Smith  
 Mrs. Patricia Hardee Smith  
 Mr. R. T. Smith  
 Mr. Raymond Horace Smith, Jr.  
 Mr. & Mrs. Robert L. Smith  
 Mr. Thurman L. Smith  
 Dr. R. D. Snipes  
 Mr. C. Warren Southerland  
 Southern National Bank  
 Mr. & Mrs. Robert T. Spain  
 Mr. Kenneth Owen Spears, Jr.  
 Mr. James Lewis Speed  
 Coach Barbara Speights  
 Mr. Raymond Frederick St. Onge  
 St. Peter's A.M.E. Zion Church  
 Mr. Fred M. Stanton  
 Mrs. Rebecca Starling  
 Mrs. Lori A. Stephenson  
 Stereo World  
 Mr. Martin W. Sternlicht  
 Mr. Bruce Edward Stevens  
 Ms. Deloris A. Stevens  
 Mrs. Joyce K. Stewart  
 Mrs. Sandra J. Stolzer  
 Mrs. Suzanne Stork  
 Mr. & Mrs. Jerry D. String  
 Ms. Adonica Stringfield  
 Sturdivant Supply Company  
 Ms. Leigh Struts  
 Mrs. Edith Styron  
 Mr. Lloyd K. Swaringen  
 Mr. Conrad Darrell Swick  
 Mr. Ronald A. Sykes  
 Tabor City Oil Company  
 Mrs. Faith Finch Tannenbaum  
 Mrs. Teresa W. Tanner  
 Mrs. Jo Ann Taylor  
 Ms. Loreley J. Taylor  
 Mr. Richard P. Taylor  
 Mr. & Mrs. Gary Teachey  
 Telephone Answering Service  
 Mr. Leonard Thagard  
 Mr. & Mrs. Melvin J. Thompson  
 Mrs. Towanna Gail Thompson  
 Mr. A. G. Thorne, Jr.  
 Mr. Archie L. Thorne  
 Rebecca Thorne  
 Mr. Robert L. Thorne, Jr.  
 Mr. William Thorne

Miss Edith Gray Tillman  
 Mrs. Cheryl Ann Mathew Tornow  
 Dr. Lucas Van Tran  
 Ms. Pam Tripp  
 Troxed Bridal & Formal  
 Mr. Walter R. Turner  
 Ms. Pamela A. Twigg  
 Mr. Rusty Tyson  
 Ms. Anne Uleman  
 Mrs. Patricia Waterfield Ulmer  
 United Carolina Bank  
 United Way of the Piedmont Inc.  
 Mrs. Lilly F. VanStory  
 Mr. Tony Vaughn  
 Ms. Margaret Mary Vickers  
 Mr. Richard W. Vieth  
 Mr. Cal Johnny Violette  
 Mrs. Regina Wahl  
 Mrs. Ethel G. Warren  
 Mrs. Linda Warren  
 Ms. Doris Watkins  
 Mr. & Mrs. John Watkins  
 Ms. Teresa Watkins  
 Mr. Jack A. Watson  
 Watson, Moore & Company  
 Mr. James Cecil Wear, Jr.  
 Dr. L. Stacy Weaver  
 Ms. Pauline Wells  
 Ms. Edna Wesley  
 Mr. & Mrs. Thomas Q. Whitmire  
 Mrs. Willie Wiggins  
 Mrs. Rita S. Wiggs  
 Mr. Dean Williams  
 Mr. & Mrs. Edward D. Williams  
 Mr. Herman P. Williams  
 Mrs. Margaret R. Williams  
 Miss Marian Williams  
 Mr. Danny Williamson  
 Ms. Vivian Williamson  
 Mr. Marshall Kent Wilmoth  
 Mr. & Mrs. George D. Wilson  
 Mr. R. Parker Wilson  
 Mr. Robert T. Wilson, Jr.  
 Ms. Gail B. Winter  
 Mrs. Deborah Wood  
 Mr. Jerry C. Wood, Sr.  
 Miss Frances Woodhouse  
 Mr. & Mrs. William Wortimer  
 Wright's Gas Company  
 Ms. Barbara D. Wynn  
 Brig. General Norman Youngblood  
 Mrs. Laura P. Younts  
 Dr. John F. Campbell  
 Ms. Kimberly Renee Champion  
 Dr. Betty Cline  
 Ms. Robin Greene  
 Dr. & Mrs. Dwight House  
 Dr. Sue L. Kimball  
 Mr. Ray Kinder  
 Ms. Alisha Morrison  
 Dr. Peter Murray  
 Dr. Jo Ann Parkerson  
 Dr. John C. Peyrouse, Jr.  
 Dr. Wayne Preslar  
 Senator Terry Sanford  
 Smooth Travel  
 Captain Perry Sopher  
 Mr. Howard T. Thomas  
 Mr. Paul F. Wilson  
 Dr. Samuel Womack

## CORPORATIONS

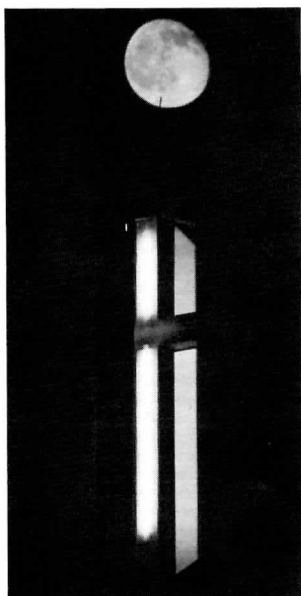
AAA Glass Company  
 Able Plumbing & Pipe Co., Inc.  
 Ace Pawn Shop  
 Adams Real Estate  
 Agnes Adcox Home  
 American Speedy Printing Cent.  
 Aqua-Nut Dive Service, Company  
 Arran Realty, Inc.  
 Arrow Exterminators of Fay., In  
 Atlas Distributing Company  
 Bahia's, Inc.  
 Bass Air Conditioning  
 Belk Hensdale Company  
 Billy Bill's Grading Company  
 Boulevard Pawn Shop  
 Bragg Pawn Shop  
 Briggs & Sons  
 Broadwell Land Company  
 Bryan Pontiac-Cadillac Company  
 Buie, Norman & Co.  
 Butler Electric Supply of Fay.  
 Cablevision of Fayetteville  
 Cain & Cain  
 Cape Fear Amateur Radio Socy.

Cape Fear Animal Hospital  
 Cape Fear Supply  
 Captain Jim's Seafood Shack  
 Cargill, Incorporated  
 Carolina Motor Club, Inc.  
 Carolina Power & Light  
 Carolina Telephone & Telegraph  
 Company  
 Cashwell Appliance Parts, Inc.  
 Caviness & Tolbert  
 Centura Bank  
 Collier Gas Company  
 Concrete Service Co., Inc.  
 Consumers Title Company  
 The Corner Cafe  
 Cross Creek Merchants Assoc.  
 Crowell Constructors, Inc.  
 Crown Manufacturing  
 Cumberland Furniture, Inc.  
 Cuts & Curls, Plus  
 D. K. Taylor Oil Company, Inc.  
 Dickinson Buick-Dodge  
 Dixie Pawn Shop-Military Supp.  
 Dowless Christmas Tree Farm  
 Dunn's Nursery & Garden Shop  
 E.I. Dupont DeNemours Company  
 East Coast Fed. Savings Bank  
 Econo Lodge I-95  
 Elliot Construction Company  
 Ellis-Walker Builders, Inc.  
 Employee Benefit Systems, Inc.  
 Entre Computer Center  
 Ernie Lee's Oil Company  
 Etwaw Shopping Center  
 Express Stop Stores  
 Faircloth Accounting Service  
 Fairfield Inn  
 Fasco Industries, Inc.  
 Fay. Coca-Cola Bottling Co.  
 Fayetteville X-Ray Association  
 Fayetteville Lighting, Inc.  
 Fayetteville Publishing Co.  
 Fayetteville Monument Works  
 Fiber Industries  
 Finch Oil Company  
 First Citizens Bank & Trust Co  
 First Union National Bank  
 The Flora Company  
 Floral Arts, Inc.  
 The Florence Rogers  
 Charitable Trust  
 Fortune Magazine  
 Fuller Oil Company  
 G & K Cleaning Service, Inc.  
 General Business Services  
 Gorham Bronze  
 Green Tree Inn, Inc.  
 Haigh, Byrd & Lambert  
 Haire Plumbing Company, Inc.  
 Harrell's Radiator Shop, Inc.  
 Hawley's Camping Center, Inc.  
 Hayes Hobby House, Inc.  
 Healy Wholesale Company  
 Highland Lumber Company  
 Hodges Associates, Inc.  
 Holiday Inn Bordeaux  
 Holmes Electric, Inc.  
 Holt Oil Company  
 Home Federal Savings & Loan  
 Homemakers Furniture Interiors  
 Houston Endowment Inc.  
 Hubbard Pipe & Supply, Inc.  
 Hunter Brothers  
 Hurst Annaho  
 Hutson Typewriter Company  
 I. C. I. Americas, Inc.  
 J. C. Penney Company  
 J. Starling Photography  
 Jernigan & Warren Funeral Home  
 Joe Strickland Realty  
 John White Drugs  
 John's Flowers & Gift Shop  
 Jones-Adcox & Company  
 Kelly Springfield Tire Company  
 Ken C. Lancaster Real Estate  
 King Discount Rentals  
 King Electric of Fayetteville  
 Kings Point Mfg. Company  
 Kyle Roofing Company, Inc.  
 LaFayette Memorial Park Corp.  
 LaFayette Motor Sales, Inc.  
 Larry's Sausage  
 Lee Hyundai, Inc.  
 Leon Sugar's Men Shop  
 Little & Pulley Office Machine  
 Long Life Lighting, Inc.  
 The LSV Partnership

# ANNUAL GIVING REPORT

Major Appliance Company, Inc.  
 McDonald Grading Company  
 McDonald Lumber Company, Inc.  
 McFadyen Music Company  
 McGeachy & Hudson Attorneys  
 Merrill Lynch Pierce Fenner & Smith  
 Mid-South Insurance Company  
 Military Pawn Shop  
 Moffitt Machine Company, Inc.  
 Moler Incorporated  
 Monsanto  
 Moorman & Kizer, Inc.  
 New Rainbow Restaurant  
 New Sanford Milling Company  
 Nix Upholstery Company  
 North Carolina National Bank  
 North Carolina Natural Gas  
 Northside Chiropractic Clinic  
 One Hour Koretizing, Inc.  
 Osborne Glass Company, Inc.  
 Owen's Florist  
 Player, Inc.  
 Professional Women of Fay.  
 Ralph Huff Real Estate Inc.  
 All Funds  
 Ready Mixed Concrete  
 Reed-Lallier Chevrolet  
 Refrigeration & Heating Co.  
 Reid, Lewis, & Deese, Nance Rhudy's, Inc.  
 Rogers & Breece, Inc.  
 Rome's Jewelers  
 Round-A-Bout Skating Center  
 Sears Resume  
 Sears-Roebuck Company  
 Singleton, Murray, Craven & Smithboro Furniture Company  
 Smooth Travel  
 Southeastern Hospital Supply  
 Southern Gin & Grain Company  
 Southern National Bank  
 Southern National Bank  
 Sprint  
 The State Bank of Fayetteville  
 Stereo World  
 Stevcoknit  
 Stout Properties, Inc.  
 Sturdivant Supply Company  
 Tabor City Oil Company  
 Telephone Answering Service  
 Thomas Realty  
 Tile Inc. of Fayetteville  
 Tim Newton Real Estate  
 Todd, Rivenbark & Puryear  
 Tom J. Keith & Associates  
 Townsend Real Estate  
 The Trophy House, Inc.  
 Troxel Bridal & Formal  
 Tuf-Tex, Inc. 3,500.00  
 United Carolina Bank  
 United Carolina Bank  
 V-Point Grocery  
 Valley Eye Clinic  
 Valley Motors, Inc.  
 Vanstony-Exum Insurance  
 Wachovia Bank of N.C.  
 Waste Management of N. America  
 Watson, Moore & Company  
 Williams Printing  
 WKML  
 WRCQ  
 Wright's Gas Company  
 Yarborough Motor Company

ICI Americas Inc.  
 Jefferson Pilot Corporation  
 Johnson-Sherman Company



K-Mart Corporation  
 Milliken & Company  
 Price Waterhouse Foundation  
 The Procter & Gamble Fund  
 The Prudential Foundation  
 RJR Nabisco, Inc.  
 Sara Lee Foundation  
 The Union Central Life Insurance Company  
 Wachovia Bank & Trust Co.  
 Winn Dixie Stores Foundation

## SCHOLARSHIP

Antioch Baptist Church  
 Army Emergency Relief  
 Beta Theta Zeta Chapter  
 Board of Higher Ed. & Ministry  
 The Brewton Sportsman Club  
 Butler Memorial Scholarship  
 Citizens' Scholarship  
 Crescent City High School  
 Damascus Lodge  
 ECC Hotsey Scholarship Fund  
 Edenton Street United MC  
 Edward Walmsley Memorial Scho.  
 Enlisted Spouses Association  
 First United Methodist  
 The Foundation of Francis Ouimet Caddie  
 Franklin County Schools  
 Ft. Bragg Officers' Wives' Club  
 General Board of Higher Education & Ministry UMC  
 George E. Gordy Family Educational Trust Fund  
 HELP Scholarship Fund  
 Heritage Fund of Bartholomew  
 Hoffer Remainder Annuity Trust  
 Houston Endowment Inc.  
 Immune Deficiency Foundation  
 J.J. Wiggins Memorial Trust  
 John P. Burke  
 Johnston County Bar Assoc.  
 Kenny Novak Memorial Fund  
 Kiwanis Service Account  
 Lake Stevens School District  
 Lem Markets, Inc.  
 Maine State Golf Association  
 Martin County High School  
 Moler Incorporated  
 N.C. Society of Accountants  
 National Association of National Society/ Public Acct.  
 New Jersey State Golf Assoc.  
 North Carolina Conference UMC  
 Nothem Ohio Caddie Foundation  
 Palm Beach Rotary Foundation  
 Pope Officer's Wives Club

R.H.S. Parent Teachers Student Assoc.  
 Rochester District Golf Assoc.  
 Sara Lee Personal Products Sch  
 Sayville Public Schools  
 Seventy First High School  
 Southside Food, Inc.  
 Specialized Printed Forms, Inc  
 State Industries Foundation  
 Stephen Bufon Memorial Educational Fund  
 The George Record School Fnd.  
 Trinity High School Athletic Boosters Club  
 United Methodist Women  
 Wal-Mart Foundation  
 York County Junior

## ALUMNI 1964

Dr. Jack M. Hunter  
 Mrs. Betty Neil Parsons  
 Mr. Louis Spilman, Jr.  
 Mr. Thurman L. Smith  
 Mr. Venable Groome Baggett  
 Mr. Guy Baker Beattie, Jr.  
 Mrs. Patricia M. Cashion  
 Mr. George F. Dempsey  
 Mr. Harvey Dale Meeks  
 Mr. Ralph F. Hoggard  
 Mrs. Virginia Knox Kern  
 Mrs. Betty Graham Bunce  
 Mrs. Louise Council  
 Mr. Jerry C. Wood, Sr.

## 1965

Mr. Alfred Paul Brill, III  
 Mr. David Herring  
 Miss Judith Ann Mason  
 Mrs. Billie Kelly Foushee  
 Mr. Paul P. Pope, III  
 Mr. George S. Potts, Jr.  
 Mrs. Rebecca Starling  
 Mrs. Willisteen Dudley Hall  
 Mrs. Doris Rulnick  
 Mrs. Suzanne Stork  
 Mr. Walter R. Turner  
 Mr. D. Keith Cook

Rev. Nancy Ruth Best  
 Mr. Loche A. McLean  
 Mrs. Jerry A. Keen  
 Captain Orrin Bert Powell

## 1966

Mr. Murray O. Duggins  
 Mrs. Amy Scott Cook  
 Mrs. Gail Harrison Joyner  
 Mr. William Edgar Bowden  
 Mrs. Martha Barefoot Graham  
 Mr. Robert Warren Griffin  
 Ms. Janet McChesney Manning  
 Mrs. Lorraine Black Bishop  
 Mr. Jack R. Honeycutt  
 Mr. Willis S. Keith  
 Mr. Wade Eugene Marr  
 Mrs. Janet Cooke Smith  
 Mrs. Ella Hall Smith  
 Mr. L. Richard Meissner, Jr.  
 Mrs. Grace Ellen Bonvik  
 Mr. Roger B. Hobgood

## 1967

Mrs. Margaret S. Alexander  
 Mr. James Blanton  
 Mrs. Judy Bethard  
 Mr. James Lee Dodrill  
 Mr. Cabell Luck, Jr.  
 Mr. Michael Brownlee, Sr.  
 Mrs. Joan Hobbs Gray  
 Mrs. Celia Abernethy Griffin  
 Dr. Wesley Eugene Guthrie  
 Mr. Elmer R. Midgett, Jr.  
 Mr. Michael B. Saunders  
 Mr. Robert M. Thompson  
 Mrs. Carolyn Nunery Sellers  
 Mr. John Baranowski  
 Mrs. Patricia Hardee Smith  
 Mr. John Joseph Haracivet, Jr.  
 Mrs. Ann Sutton  
 Mr. Thomas Harvey Matthews  
 Mr. James Allen Bledsoe  
 Mr. Dale Webster Marshall, Jr.

Mr. James Spencer Birdsong  
 Mr. Larry E. Martin

## 1968

Mrs. Patricia Bracewell Clayton  
 Mrs. Mary F. Wright  
 Rev. Wilson Edward Barber  
 Miss Rosemary Joyce Lands  
 Mr. Terry F. Daniels  
 Mrs. Jean Fort Brafford  
 Mrs. Catherine Bryant  
 Mrs. Brenda K. Johnson  
 Mrs. Brenda Rosser Lyons  
 Mr. Charles Stephen McLamb  
 Rev. James Robert Lancaster, Jr.  
 Mrs. Kathy Richardson Borrelli  
 Mr. Dennis Luther Bruce  
 Mr. Wilson Terry McPherson  
 Mr. Paul C. Reinert  
 Mrs. Barbara A. Lawson  
 Mr. David L. Yount  
 Ms. Anna D. Workman  
 Mrs. Patricia Waterfield Ulmer  
 Mr. William H. Breeden, Jr.  
 Mr. Malvern Spencer Barrow, III  
 Mrs. Charlotte Carmine  
 Mrs. Elaine W. Ratliff  
 Mr. Carroll L. Davis  
 Mrs. Ethel G. Warren  
 Mr. William H. Billings  
 Mrs. Gwen Pheagin Holtsclaw  
 Mr. Francis Patterson Quantz  
 Mr. Gordon B. Herbert  
 Mr. R. Wayne Trousdale

## 1969

Mr. Rodney F. Hobbs  
 Mrs. Zula High  
 Mrs. JoAnna Cherry Palumbo  
 Mr. Richard L. Dean  
 Dr. Michael L. Hale  
 Mr. Charles Linwood Ferrell  
 Mr. A.G. Mason Dirickson  
 Mrs. Margaret R. Williams  
 Mrs. Patricia McCallum Livingston  
 Mr. Maurice W. Elliott  
 Mrs. Carolyn Marks Baldwin  
 Mrs. Marcia Faye Hasie-Daniels  
 Mr. Robert Bruce Jarvis  
 Mr. Robert Alfred Jones, Jr.  
 Rev. John Philip Purser  
 Mr. James Francis Loschiavo  
 Mrs. Karabeth Schleich  
 Mrs. Joyce K. Stewart  
 Mrs. Sandra J. Stolzer  
 Mr. Wyatt K. Harper  
 Mr. John Alfred Jordan  
 Mr. Edward L. Dunn  
 Mr. Fred M. Stanton  
 Mrs. JoAnne Strickland Thomas  
 Rev. Woodrow Wells, Jr.  
 Ms. Sandra A. Wheeler  
 Mrs. Janice Marcy Rhue  
 Mr. Steven Helms Harden  
 Mr. Richard Bellmore Lindner  
 Mr. Richard W. Vieth  
 Mrs. Susan Keeth Fertel  
 Mr. Terry Wayne Boose  
 Mr. James Edward Simmons, IV  
 Mr. Henry Heath, Jr.  
 Mr. Samuel H. Compton, Jr.  
 Mr. David Ladd Bouteiller  
 Ms. Martha McCracken  
 Mr. & Mrs. Edward D. Williams  
 Mr. Raymond Horace Smith, Jr.  
 Mr. & Mrs. John F. Chilton, III  
 Mrs. Linda Bruton Bourland  
 Mr. & Mrs. William Paxton Estes

## 1970

Mr. Jackson L. Langley  
 Mrs. Johnnie Stevens Sarvis  
 Mr. Charles William Siska, Jr.  
 Mr. Harvey T. Wright, II  
 Ms. Bonnie Starnes Griffith  
 Mrs. Helen Kathy Brown  
 Mrs. Sandra Matthews Carter  
 Ms. Camellia Sizemore Dunn  
 Mr. & Mrs. William M. Lineberger  
 Mrs. Patricia Griggs DeNeal  
 Mr. Henry Bynum Farrell, III  
 Mr. Herbert Finger, Jr.  
 Mrs. Linda Burns Lingerfeldt

Mrs. Linda Eurey Ackerson  
 Mrs. Betsy Cheshire  
 Mr. Paul Andrew McKee, Jr.  
 Mr. Samuel P. Guy  
 Dr. Linda Carol McPhail  
 Mrs. Ann Young Hampton  
 Mr. Wade E. Byrd  
 Mr. Jimmy Pifer  
 Mr. James Daniel Poole, Jr.  
 Mr. Roger Gale Simmons  
 Mrs. Linda Y. Smith  
 Mrs. Diane Mann  
 Mrs. Laura Byrd Rambeau  
 Mr. Walt G. Townley  
 Mrs. Betsy P. Richardson  
 Mrs. Towanna Gail Thompson  
 Mrs. Olivia Godwin Bradley  
 Miss Martha Regina McLaurin  
 Mr. M. R. Teer  
 Mr. C. Warren Southerland  
 Mr. Robert L. Giannini, III  
 Mr. William Franklin Faulkner  
 Mrs. Marilyn Gale Simons  
 Mrs. Brenda Herring Hiltner  
 Mrs. Trudi J. Waters  
 Mr. Jefferson D. Bruton  
 Mrs. Linda Warren  
 Mr. Carl D. Ford, Jr.  
 Mrs. Leta Smith Olson  
 Mrs. Sue James Smith

## 1971

Mr. David T. Woodard  
 Mrs. Lynn Moore Carraway  
 Mrs. Marilyn Every Atkinson  
 Mrs. Dianne Vann Cox  
 Dr. Thomas H. Jones  
 Mrs. Susan Kerr Callahan  
 Mrs. B. Franklin Evans  
 Mr. John Wayne Brown  
 Mr. Joe Clayton  
 Mr. Frederic John Koch  
 Mrs. Lynn Evans Midgett  
 Mr. John G. Roberts  
 Mr. & Mrs. Ronald Roegiers  
 Mrs. Linda Connelly Pierson  
 Mrs. Susan G. Motes  
 Mr. James H. Rowland  
 Mrs. Cynthia King Speed  
 Mr. Gary Teachey  
 Mr. Jerry R. Monday  
 Mrs. Teresa Self Swain  
 Mr. Bruce Edward Stevens  
 Mr. Stephen M. Whilden  
 Mrs. Margaret Adams Martin  
 Mrs. Linda Carlson Hall  
 Mr. Gary S. Elefante  
 Mr. James Lewis Speed  
 Mr. John W. Butler  
 Mr. Owen A. Hager, II  
 Rev. Dr. William M. Prensell  
 Mr. Leonard Thagard

## 1972

Rev. Michad Wayne Safley  
 Mrs. Lynn Gruber Clark  
 Mrs. Virginia Teachey  
 Mrs. Dory Kestner Anderson  
 Mr. Samuel Quinton Atchley  
 Mr. Emmet Wilson Fisher, Jr.  
 Mr. & Mrs. Larry Lugar  
 Ms. Rina Janey Bishop  
 Mr. Mathew A. Baselici  
 Mr. Thomas McLauren Bullard  
 Mr. Charles Van Hartsell, Jr.  
 Mr. John F. Campbell  
 Mr. & Mrs. Clayton William Deaton, Jr.  
 Mr. Donald Leatherman  
 Ms. Hazel G. Linn  
 Mr. & Mrs. Howard J. Lupton  
 Mr. Alan Marshall Goad  
 Mrs. Margaret Pigott Goad  
 Mrs. Elizabeth Barnhart Burgess  
 Mr. William J. Costin, Jr.  
 Mrs. Laura Jean Kamionka  
 Mrs. Gayle Rogers Kent  
 Mrs. Lena Johnson Massengill  
 Mr. John J. Sarvis  
 Ms. Ann R. Simoneau  
 Mr. Paul L. Sanderford, Jr.  
 Mr. James Furman Powers  
 Mrs. Bernadine Rains  
 Mr. Larry Walton Nunberry  
 Mr. Jerry L. Clemmons  
 Mrs. Rainelle Dixon Mishoe

## MATCHING GIFT

Abbott Laboratories Fund  
 Alcoa Foundation  
 ATC  
 Barclays American/Foundation  
 Burlington Industries Fnd.  
 Carolina Power & Light  
 Carolina Telephone & Telegraph Company  
 Centel Corporation  
 Chrysler Corporation Fund  
 Cigna Foundation  
 CPC International Inc.  
 CSX Corporation  
 Duke Power Company Foundation  
 The Equitable Life Insurance  
 The Goodyear Tire & Rubber Co.  
 GTE Foundation Matching  
 The Hartford Insurance Group  
 The HCA Foundation



# ANNUAL GIVING REPORT

Ms. Nancy Ryan  
Miss Edith Gray Tillman  
Mr. Bobby Clifton McAlpin  
Mr. Marshall Kent Wilmoth  
Mrs. Gail Outlaw Graham  
Mr. & Mrs. Greg Liss  
Rev. Phillip Edward Baugues  
Mrs. Debbie Bright Beavers  
Rev. Ray Thomas Gooch

## 1973

Ms. Penny Cheryl George  
Mr. Reid Anthony Horne  
Mrs. Virginia Thompson Oliver  
Mr. Joseph Paul Bednarz  
Mr. Jimmy Ray Elledge  
Mr. John Steven Bryan  
Mrs. Elizabeth McKenzie Cameron  
Mrs. Margaret K. Bledsoe  
Mr. David Banks Alabaster  
Rev. Wesley Freedland Brown  
Mr. Robert L. English, Jr.  
Mr. Walter Joseph Gregory  
Ms. Marion Janet Graham  
Mr. Roy E. Brown  
Mrs. Laurie Alton Jennings  
Mrs. Anita Fisher King  
Mr. & Mrs. Evan Hardy Lacy, III  
Mr. J. C. Harris, III  
Mr. Jonnie Bruce Hollingsworth  
Mr. & Mrs. Kevin Joseph Jorgenson  
Mr. Jeffrey Allen Olson  
Mrs. Winifred McBryde Grannis  
Mrs. Christine G. Slappy  
CSM & Mrs. George D. Roraback Jr.  
USA

Mr. John Fletcher Poulk  
Mr. Harold Glenn Slaughter  
Mr. Ronald A. Sykes  
Mr. Terry Lyon Thomas  
Dr. Robert Frederick Pelham  
Mr. Charles Michael Perry  
Mr. Walter Henry Grimsley  
Mr. & Mrs. Brian Cash  
Mr. & Mrs. Pete Malloy Chason  
Mrs. Rita J. Foley  
Mr. Larry S. Philpott  
Mr. John G. Dicks, III  
Mr. Harry Lee Britt, Jr.  
Mrs. Jane Stroud Cade  
Mr. Eugene Robert Cote  
Mr. Eugene B. Dillman  
Mrs. Bonnie Herring Crabtree  
Mrs. Jo Anna Walker Brown

## 1974

Mrs. Judith Harrison  
Dr. Samuel J. Clark, III  
Mrs. Yvette Sanderford  
Mrs. Meredith Stone Cade  
Lt. Colonel John Kenneth Andrew  
Mrs. Linda Allvord Damminger  
Mr. Barry Arnold Box  
Mr. Andrew Ennett, III  
Mr. Brent Alfred Matthews  
Mr. Ronald Roy Glancy  
Mr. Ernest L. Conner  
Mr. Frank K. Layton, Jr.  
Rev. & Mrs. Jim Rowlette  
Mr. & Mrs. Kenneth H. Sykes, Jr.  
Ms. Rebecca Smith Spell  
Miss Marian Williams  
Rev. LaVern Womack  
Colonel Clark Waverly Hastings  
Mr. Elmer Charles Hubbard  
Miss Sharon Britten  
Mrs. Myra Jackson  
Rev. Kenneth S. Valentine  
Rev. Randy L. Wall  
Rev. Leonard F. Doucette  
Dr. William C. Harrison  
Mr. Phillip Nolan Becker  
Rev. James A. Auman

## 1975

Mrs. Faith Finch Tannenbaum  
Mrs. Carol Hardee Stout  
Mr. Kenneth Danid  
Mrs. Mary Alice Barefoot  
Mr. Clifford J. Gissell  
Mr. Turner Foster Caldwell  
Mrs. Betty Burke  
Miss Laura Sullivan Dilworth  
Ms. Mary McDuffie  
Mrs. Linda Archuleta Bradford  
Mr. James R. Stanley

Mrs. Deborah Wood  
Mrs. Laura P. Younts  
Mr. Dwight Lamar Sheppard  
Mrs. Kay R. Demyant  
Mrs. Cheryl C. Mitchell  
Mr. Geoffrey K. Sherman  
Ms. Polly Ann Bridge  
Mr. Samuel Henry Brick, III  
Mr. Charles M. Rhodes  
Mr. John Kenyon Elkins  
Mr. George David Benham  
Mr. Patrick Murphy O'Brian  
Mr. Jerry Dunlap Ransom  
Mrs. Betty L. Milligan  
Mrs. Lynda Buie Baum  
Ms. Margaret La Jeanne Pierce

## 1976

Mr. George Thomas Dent  
Mrs. Mildred Dexter-Rosell  
Mrs. Elizabeth Scruggs Brandt  
Mr. David Lee Foster  
Mr. Levie C. Cameron  
Mr. Stephen Driggers  
Rev. James Richard McDowell  
Mrs. Patti Crissman Ellington  
Mrs. Lona Collier Horne  
Mrs. Sharon Louise Monroe  
Mrs. Tonie Neal  
Mr. Daniel Hood  
Mrs. Patricia Horne Lancaster  
Mr. Richard D. Williams

## 1977



Mr. Michael Llewellyn Casey  
Mr. Clyde Elias Lawer  
Mr. Michael Wayne Gillmer  
Mr. Larry Wayne Parsons  
Miss Jan Berenson Nahiniuk  
Mrs. Cheryl Ann Mathew Tornow  
Mrs. Rebecca Strickland  
Rev. Edward Holmes Carll  
Ms. Virginia M. Pierce  
Mr. Ronald Dean Baucom  
Ms. Judith Cushman Dubose  
Rev. Victor C. Mansfield, II  
Ms. Ida K. Lavin

## 1978

Mr. Aubrey Wayne Carter  
Mrs. Carole Wells  
Mrs. Beverly D. Cleverley  
Rev. James Edward Malloy, Jr.  
Mr. Carl Christian Birk  
Mr. James Ralph McFayden, Jr.  
Mrs. Pamela G. Hart  
Mr. Glen Earl Meade, Jr.  
Rev. Benjamin Ray McVain  
Mr. David M. Perry  
Mrs. Sylvia Vessels Price  
Mr. David Radford  
Mr. Robert Lee Plotts  
Mrs. Donna Mercer Surratt  
Rev. Randy Coy Blanchard  
Ms. June Marie Connor  
Ms. Elizabeth Blair Robertson  
Rev. Claudia Gail Harrelson  
Dr. Joseph Brum, Jr.  
Mr. Stephen Walker  
Mrs. Wanda Herring  
Mrs. Teresa Poole Akamatsu  
Mr. William B. Crompton, III  
Rev. Vernon Weaver Brown, III  
Ms. JoAnne Jones James  
Ms. Mary Jane Kirby  
Mr. James E. McRae  
Mr. Ernest Wilbert Parker  
Mr. Jeffery Lynn Norton  
Mrs. Irene Graham Rid

Ms. Jane Allen Miller  
Mr. Edward Arnold Owens  
Mr. Samuel Norman  
Mr. Robert T. Wilson, Jr.

## 1980

Ms. Ruby M. Strouse  
Mrs. Claire Alyce Turner Edge  
Mrs. Karen Jones Ehle  
Mrs. Rebecca Sugg Harris  
Mr. Ricky L. Lindsley  
Ms. Cynthia Ann Gilliam  
Mrs. Victoria Etheridge  
Rev. John Talton Madison  
Mrs. Susan M. Bady  
Mr. Michael Carvel Hines, Sr.  
Mr. Earl Edward Henning  
Ms. Elaine Adams  
Mr. Dwight Eugene Cribb  
Captain William Robert McNeill, Jr.  
Mr. William Jarvis Pittman  
Miss Maryann Coss Struble  
Mrs. Towanna O'Neal Bigford  
Ms. Ruth Gilmore Ambrose  
Mr. Hugh Oscar Queen, III  
LCDR George Thomas Holland  
Rev. Scott W. Pery

## 1981

Lt. Colonel M. Wilkey Blackwell, (Ret.)  
Ms. Effie Jeanette Anderson  
Mr. David Earl Flowers  
Mr. Andre Carson  
Mrs. Mendee Hawley Daniel

Rev. Jerry Wayne Cribb  
Mrs. Madeline Renee Hairston  
Rev. Adolph C. Smith  
Ms. Genevieve H. Scarboro  
Mrs. Vickie Ozeliah Erben  
Rev. Mark C. Mooney  
Ms. Pam Tripp  
Mr. Mark R. Gerald  
Ms. Joy Carruth Kuhar

## 1982

Mr. Thomas L. Bosquet  
Mrs. Julie Madison  
Mrs. Patsy J. Gordon  
Ms. Margaret C. Haigh  
Mrs. Jean Radcliff Young  
Mr. Bertie David Prince, III  
Mrs. Teresa W. Tanner  
Mrs. Gay Davis Sexton  
Mr. James Andrew Davis, Jr.

## 1983

Mr. Mark C. Kendrick  
Rev. & Mrs. Gilliam P. Wise  
Ms. Charlotte S. Coheley  
Miss Anna Marie Moore  
Mr. Joseph Jack Bartanus  
Mrs. Elaine Forbes Marshall  
Mrs. Karen Taylor Horton  
Ms. Phyllis J. Long  
Mrs. Torie Price Riddle  
Mrs. Regina Wahl  
Ms. Carla Jo Maldonado  
Ms. Marilyn G. Richmond  
Mr. Robert L. Harmon  
Mr. Kenneth Owen Spears, Jr.  
Mr. John W. Chance

## 1984

Mr. Owen W. Dolan  
Mrs. Michele Kildow  
Mrs. Linda Archer  
Mr. Randy Egsegian  
Mrs. Lynn Morton Kubota

Mr. Robert L. Larsen  
Mr. Roger W. Grider, Jr.  
Ms. Jeanne Maureen Reed  
Ms. Dell Jean Sharpe  
Mr. Horace Edwin Riddle  
Mr. Lewis C. Pilkay  
Mr. Michael Sokalski  
Mr. Cal Johnny Violette  
Ms. Jocce E. McLaurin  
Miss Helen Marie Pilkay  
Mr. & Mrs. Danny Franklin Hagans  
Ms. Loreley J. Taylor

## 1985

Mr. Richard Joseph Bicoy  
Mr. George Anthony Small  
Mrs. Theresia Howland Mack  
Mrs. Donna Stewart Beaman  
Mr. Phillip E. Hershey  
Mr. William Kevin Holden  
Mrs. Claudia Hawthorne May  
Mrs. Dorothy Hubbard  
Mr. Herbert A. Schroer, Jr.  
Mr. Conrad Darrell Swick  
Ms. Barbara H. Antal  
Mr. Allen S. Keene  
Ms. Gina Lea Bailey  
Mr. Michael D. Mitchell  
Mr. Roger Durham Pait  
Mr. Franklin Twain Sessoms

## 1986

Mr. Richard Lynn Dail  
Ms. Joy Heyward Downing  
Mrs. Donna M. Bullard  
Ms. Donita Coleman  
Mr. Ralph J. Abramo  
Ms. Barbara D. Wynn  
Ms. Lillian Ann Cortes  
Ms. Suzan Horn Iwerks  
Mr. Keith Allen Kildow  
Ms. Grace Alvina Mock Haney  
Mr. Michael Eugene Crowley  
Ms. Lisa Fowler Critcher  
Mr. Randy Lee Bolding  
Mrs. Lynne Dawkins Smith  
Mrs. Jean Lemke

## 1987

Mr. Allen Lee Coats  
Mrs. Nina Marie Harding  
Mr. James T. Jumalon  
Mr. Stanley Dexton Mozingo  
Mrs. Deanna Swanson Carter  
Mrs. Ruth Rushton Crumley  
Mr. Thomas C. Mack  
Mrs. Barbara Anne Miller  
Mr. John David Wicker  
Mrs. Julie E. Callahan  
Mrs. Elice Marie Brooks  
Mr. John David Walsh

## 1988

Mr. Roy J. Haddock  
Mr. Betsy Conner  
Mr. Thomas S. Hatfield  
Lt. Gregory S. Creech  
Mr. Robert G. Dees, Jr.  
Mr. William Foster Little, III  
Ms. Pamela Sue Hoff  
Mrs. Nona D. Fisher  
Mr. Darrell D Bock  
Ms. Christa M. O'Quinn  
Ms. Pamela A. Twigg  
Mr. John S. Wohlfarth  
Mrs. Lori A. Stephenson  
Ms. Patricia M. Hall

## 1989

Mr. Joseph Edward Quinn, Jr.  
Mr. Jesse C. Smith  
Mr. Terry E. Farr, Sr.  
Mr. Scott W. Armentrout  
Ms. Deborah D. Hammonds  
Miss Janice E. Humphreys  
Ms. Shirleen Mack  
Ms. Valerie L. Morris  
Ms. Tammy Poole  
Mrs. Kathryn Small Offenhauser  
Mr. Kendle D. McKeel  
Mr. Ronald K. Phipps  
Mrs. Wendy Ann Skinner  
Mr. Jaime A. Rosa  
Mr. Terry D. Preiss

Mr. David L. Robbins  
Ms. Sondra Gail Maynard  
Mrs. Brenda F. Benjamin  
Ms. Jo Eva Keebaugh  
Ms. Joy A. Bonhurst  
Mr. Patric S. Zimmer

## 1990

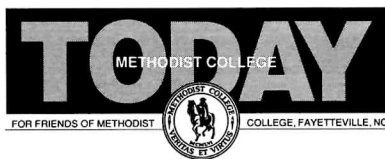
Mrs. Lynda E. Beard  
Mr. Michael Henry Johnson  
Mr. Kyle Joseph Adrian  
Ms. Carol Patricia Andre  
Ms. Anita-Lynn Cechowski  
Ms. Mary Ellen Anglin  
Mr. Richard Clark Briggs, Jr.  
Mr. Michael James Carpenter  
Ms. Janet L. Carter  
Mr. Craig Stephen Amaral  
Ms. Janet K. Buffaloe  
Mr. John Patrick Kelley  
Ms. Lauren Michelle Kvach  
Mr. Lorán Eugene Leek  
Mr. Gary D. Rhodes  
Ms. Karen K. Nelson  
Ms. Janice E. Riccardelli  
Mr. Victor Jose Roman  
Mr. Raymond Frederick St. Onge  
Ms. Angela K. Zandiotis  
Ms. Lisa Vigeoletti Lange  
Ms. Angela Camille Smith  
1 Lt. Daniel Richard Short  
Ms. Margaret Mary Vickers  
Ms. Mithu Chaudhuri  
Mr. Paul D. Grove  
Mr. Robert Leonard Sinodis  
Ms. Gail B. Winter  
Mr. Douglas E. Wolfgang, Jr.  
Mr. Robert Wesley Marrs  
Ms. Jessica Lynn Muldrow  
Mrs. Jody L. Dirks

## 1991

Mr. Timothy Alan Helms  
Mrs. Joan Pait  
Ms. Leigh Stutts  
Ms. Kimberly A. Barefoot  
Ms. Melissa B. Hart  
Ms. Tricia M. Criswell  
Mr. Robert McRae Barnhill, Jr.  
Mrs. Sylvia Brown Davis  
Mr. James Wesley Dickens  
Mr. Michael Christopher Baush  
Mr. William Franklin Embree  
Mr. Nelson Garcia  
Mrs. Audrey Houser  
Ms. Lisa A. Johnson  
Mr. Jess M. Lancaster  
Mr. John H. Klein, Jr.  
Mrs. Rosa Kelly  
Mr. Kenneth Earl Creech, Jr.  
Mr. Mark E. Bryson  
Mr. Todd L. Peterson  
Mrs. Dagna Ellen Kuehl  
Mrs. Nancy Jean Phillips  
Ms. Kelly Ann Canney  
Ms. Barbara Jean Overman  
Ms. Matalyn Denise Rodgers  
Mrs. Pamela Renee Phillips  
Mr. Claude Earl Floyd  
Mrs. Denise Marie Pribis  
Mr. William Stratton Arliss  
Mrs. Kimberly J. Goad  
Mr. Alfred John Thurston  
Mr. Joseph A. Castner  
Mr. Herman P. Williams  
Ms. Mary Ann Angelicchio  
Mr. Charles E. Gossage  
Mrs. Katherine Henrietta Grasso  
Mrs. Christy Cole  
Mrs. Nancy Jean Ramsey  
Ms. Carole G. Miller-Seda  
Ms. Kimberly Renee Champion  
Ms. Jeanette Christine Dell

## 1992

Mrs. Morie Murray Howard  
Mr. Steven Clary  
Mr. Jason Sean Leinheiser  
Ms. Dorian Elizabeth Droege  
CW2 Kenneth W. Reese  
Mr. James Cecil Wear, Jr.  
Ms. Kimberly Jane Ratliff  
Ms. Eunyoung Park



Second Class  
Postage Paid  
at Fayetteville, NC  
28311

Vol. XXXIV, No. 1 April 1993  
5400 RAMSEY STREET  
FAYETTEVILLE, NC 28311  
(USPS 074-560)  
Address Correction Requested

## CAMPUS CALENDAR

### APRIL

- 2 *The Will of R. D.*—Reeves Auditorium, 8:00 p.m. (World Premiere)  
3 *The Will of R. D.*—Reeves Auditorium, 8:00 p.m.  
4 *The Will of R. D.*—Reeves Auditorium, 3:00 p.m. and 8:00 p.m.  
8 Pilot Club of Fayetteville—Alumni Dining Room, 7:00 p.m.  
12-19 Carter Pope's Senior Art Show—Mallett-Rogers House  
14, 15 *Hail Dionysus*—Reeves Auditorium, 8:00 p.m.  
17 Little Miss Fayetteville Pageant—Reeves Auditorium  
18 *Messiah*—(Cumberland Oratorio Singers) Reeves Auditorium, 8:00 p.m.  
19 Cape Fear Amateur Radio Society—Alumni Dining Room, 7:00 p.m.  
20 Recital by Andrea Schmalz—Reeves Auditorium, 8:00 p.m.  
21 Lecture/Reading by Mystery Novelist Susan Oleksiw—Hensdale Chapel, 7:30 p.m.  
24 \*Guided Bird Walk/Nature Trail, 8 a.m. (Meet at Horner Adm. Bldg.)  
24 \*Guided Wildflower Tour/Nature Trail, 10 a.m. (Meet at Riddle Center)  
24 Fayetteville Piano Teachers' Association—Reeves Auditorium, 8:00 a.m.-2:00 p.m.  
24 Fayetteville Symphony Orchestra Performance—Reeves Auditorium, 8:00 p.m.  
25 \*Methodist College Chorus Spring Concert—Reeves Auditorium, 3:00 p.m.  
25-May 2 \*Honors Art Exhibit—Mallett-Rogers House, 2:00 p.m.-4:00 p.m.  
27 \*Methodist College Stage Band Spring Concert—Reeves Auditorium, 8:00 p.m.  
29 Stock Market Symposium—Main Dining Room, Berns Student Center, 6:30 p.m.  
30 Broken Heart Ministries Concert—Reeves Auditorium, 7:30 p.m.  
30-May 1 \*Caroline Kearns' senior project—*Out of Gas*, drama—Behind the soccer field, 8:00 p.m.

### \*Official Fayetteville Dogwood Festival Events

### MAY

- 2 \**Out of Gas*—Behind the soccer field, 3:00 p.m.  
8 Pageant Sponsored by the ABWA's Longstreet Chapter—Reeves Auditorium  
13 Pilot Club of Fayetteville—Alumni Dining Room, 7:00 p.m.  
16 Baccalaureate and Graduation—Reeves Auditorium  
17 Cape Fear Amateur Radio Society—Alumni Dining Room, 7:00 p.m.  
20-23 Cheer Ltd. Camp  
21, 22 Pilot Club/Ann Clark School of Dance—Reeves Auditorium,  
23 Guy School Graduation—Reeves Auditorium  
24-29 National Guild of Piano Teachers

### JUNE

- 4-11 Cheer Ltd. Camp  
10 Pilot Club of Fayetteville—Alumni Dining Room, 7:00 p.m.  
16-19 North Carolina Conference of the United Methodist Church—Annual Conference  
21 Cape Fear Amateur Radio Society—Alumni Dining Room, 7:00 p.m.  
22-26 United Pentecostal Youth Camp  
26 Recital by Mildred Dexter-Rosell's Piano Students  
27-July 1 Cumberland County Schools—S.A.S.I. Program

### JULY

- 7-10 Emmaus Walk—Men's Retreat  
8 Pilot Club of Fayetteville—Alumni Dining Room, 7:00 p.m.  
9-11 Freshman Orientation  
12-16 Universal Cheerleaders Association  
14-17 Emmaus Walk—Women's Retreat  
14-17 Golf Retreat  
19 Cape Fear Amateur Radio Society—Alumni Dining Room  
19-24 Methodist College Music Camp  
25-31 A.C.S.—United Methodist Church

Calendar is subject to change. For more information, phone 630-7004.