

# METHODIST COLLEGE TODAY



For Alumni and Friends of Methodist College, Fayetteville, N.C.

Vol. XXVI

No. 4



**HOMECOMING '85**  
**'Up, Up and Away**  
**With The Arts'**

# METHODIST COLLEGE



# TODAY

For Alumni and Friends of Methodist College, Fayetteville, N.C.

Vol., XXVI, No. 4

## New Staff Opens Fall Semester

Change and improvement seem to be the bywords for Methodist College in the year of 1985. It looks to be an interesting fall semester with a large influx of staff and faculty to enhance the quality of the people already here.

New staff added to the prestigious roster at Methodist include Alan Robinson, who is the new director of public information and publications. Robinson is a graduate of Drake University in Des Moines, IA, with a B.A. in journalism. His previous position was assistant director of public relations at Buena Vista College in Storm Lake, IA. Dennis Gregory comes aboard as the new vice president for student affairs and dean of students. His degrees encompass an A.A. from Ferrum College, a B.S. in history and political sciences from James Madison University in Harrisonburg, VA, and a M. Ed. in educational administration from the University of Virginia in Charlottesville, VA. The assistant dean of students for residence life is Carol Binzer. She received her B.B.A. in management from the College of William and Mary in Williamsburg, VA. She went on to obtain her M.S. Ed. in college student development from Alfred University in Alfred, NY. Binzer also has a partially completed Ed. D from Vanderbilt University in Nashville, TN, and she will be pursuing the completion of this degree part-time. Kathie Harrison is the assistant dean for student activities. Her degrees include a B.S. in sociology and a M.S. in college student personnel, both from Indiana State University. Lynn Swann, the incoming hall director for Garber, has just recently graduated from UNC-Chapel Hill with a degree in interdisciplinary study.

Adding to the already impressive faculty here at Methodist is Fiore Bergamasco, the assistant professor in P.E. and the coach of cross country and track for men and women. He holds a B.A. in health and physical education from Baldwin Wallace College in Berea, Ohio, and has done graduate work at Penn. State University, Slippery Rock University, Edinboro University, and Allegheny College. The interim director for our new bachelor of science nursing program at Methodist is Marie Blackwell. Her degrees include a B.S. in Zoology, a B.S.N., and a M.S.N. in psychiatric mental

health all from Kent State University in Kent, Ohio. Jôy Cogswell is the director of the Community Music Program, "First Music" and private piano. She received her bachelor of music degree from Florida State University where she also did her graduate studies. Furthermore, Joy was in advanced piano study with Dr. Joseph DiPiazza at UNC-Greensboro. Henry M. Harman is the associate professor of accounting. He has a B.S. in business administration from Lehigh University, an M.B.A. in accounting from the University of Bridgeport along with his C.P.A., licensed in CT.

Hal Morrison, the assistant professor of P.E. and the golf coach, holds a B.S. and a M.A. both from East Tennessee State University. Alice "Dee" Smith is an instructor in special education. Her degrees include a B.S. in business education from Fayetteville State University and a M. Ed. from Columbus College. She also has 48 hours toward an Ed. D from UNC-Greensboro.

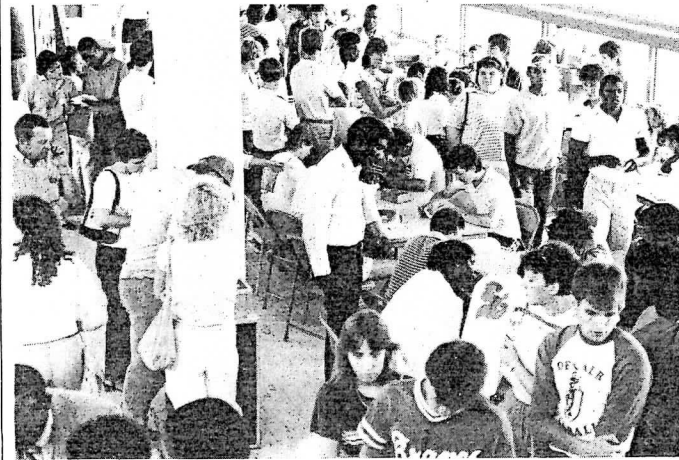
Dr. Richard G. Walsh is the assistant professor of religion. He holds a B.A. in religion and greek from Baylor University, he holds a master of divinity degree from Southwestern Baptist Theological Seminary and a doctor of philosophy from Baylor University in New Testament studies. Paul Wilson, an instructor in communication, has a B.F.A. in dramatic arts and an M.A. in mass communication all from UNC-Chapel Hill. In addition, he holds a M.F.A. from UNC-Greensboro. Dr. Todd L. Woerner joins the faculty as an assistant professor of chemistry. He received his B.S. in chemistry from Guilford College in Greensboro and his Ph.D in chemistry from the University of Pennsylvania.

Faculty members who have been tenured include Dr. JoAnn Clark, Silvana Foti, Dr. Sue Kimball, Walter Swing, Norma Womack, Tom Austin, Dr. Linda Sue Barnes, and Dr. Kenneth Calvert.

In the promotion department, both Dr. Kimball and Dr. Preslar are now full professors and Mrs. Womack is an associate professor.

Faculty who have been promoted from part-time to full-time are the following: Samuel Clark, an instructor of business and economics, who holds a B.A. in history from Methodist College, a

(Continued on page 3)



Registration figures predict the largest enrollment in years at Methodist College. (Photo by Gimlick)

## New Trustees Named To MC

Former North Carolina General Assembly member John Bond Gillam III of Windsor, NC, is one of six new members elected to the Methodist College Board of Trustees and approved during the recent session of the North Carolina Conference of the United Methodist Church.

Involved in agribusiness, Gillam holds degrees from the University of Georgia and the University of Virginia. He was a member of the North Carolina House of Representatives in 1981-82 and 1983. A former member of the Fork Union Military Academy Board of Trustees, Gillam was named "Outstanding Young Man of the Year" 1979-81 by the US Jaycees.

Robert Hatfield, retired vice-president of Alcoa Aluminum Company, will join Gillam on the Methodist College Board of Trustees. An electrical engineering graduate of the University of Tennessee, Hatfield is a member of the Development Council for UT as well as a member of the North Carolina Conference, United Methodist Church, Board of Higher Education. Hatfield currently resides in Sanford, NC.

George Johnson, minister of University United Methodist Church in Chapel Hill, NC, was also named a Methodist College Trustee. A graduate of Pfeiffer College and Duke University Divinity School, Johnson is a member of the Board of Trustees for the Methodist Home for Children in addition to serving on the Board of Higher Education and Campus Ministry for the NC Conference of the United Methodist Church.

A fourth new Trustee for Methodist College is Dr. Grant Shockley, educator and minister, Duke University Divinity School faculty. Shockley holds degrees from Drew University (BD), and Union Theological Seminary (MA). He earned an Ed. D. as a Methodist Crusade Scholar in 1952. Shockley resides in Durham, NC.

Ernest G. Wendell, general manager of Durham Products Division, Gorman - Rupp Company, in Durham NC, is the fifth new Methodist College Trustee. Retired from twenty years in the US Navy, Wendell is a native of Chicago. He currently serves as president of the Durham District of United Methodist Men.

Sherrill Williams is the sixth addition to Methodist's Board of Trustees. Affiliated with House/Autry Milling Company in Newton Grove, NC, Williams serves on the Board of Directors for UCB as well as on the Board of Visitors for Duke University Divinity School. Williams is a former trustee for Mt. Olive College.

Four other trustees were elected to succeed themselves on the Board. Three Fayetteville residents, Frank Barragan, president of North Carolina Natural Gas Corporation, Ralph Hoggard, account executive with E.F. Hutton, and J. Berbard Stein, retired businessman associated with The Capitol department stores, will serve additional three year terms. Retired Admiral Elmo R. Zumwalt, Jr., former Chief of Naval Operations, will also serve an additional term on the Methodist Board. Zumwalt currently resides in Arlington, VA.

## Safley, Gooch Receive Medallions

The Rev. Michael Safley and the Rev. Ray Gooch were awarded Methodist College Medallions at summer commencement exercises held Tuesday afternoon, May 20, in Reeves Auditorium.

Methodist College Medallion Awards are based upon outstanding contributions to society, the church and the college. Those selected reflect dignity, honor and integrity. No more than five Medallions are awarded in a year.

Gooch and Safley both graduated from Methodist in 1972. They were also classmates at Duke University, earning their master of divinity degrees in 1975. Gooch was pastor of the Albemarle charge (Mackeys, Hebron and Pleasant Grove, NC) from 1975 to 1982 and is presently pastor of the Pittsboro Circuit (Brown's Chapel and Pleasant Hill, NC).

Safley served as chaplain of the Methodist Home for Children in Raleigh from 1975 to 1978 and then as pastor of Middleburg United Methodist Church. Since 1982 he has been the associate director of youth, young adults, worship, music and the arts for the North Carolina Conference Council on Ministries.

Both men were active on the Methodist College campus and have continued that involvement into their respective church and community work. Safley was on the dean's list at Methodist, president of Sanford Residence Hall, president pro-tem of the student senate, a class senator, a hall counselor, winner of the Ficker Award, and a student worker in the cafeteria and the public rela-

tions office. His classmate was editor of the Carillon, the campus yearbook, in 1971 and 1972, a library worker, active in the Methodist Student Movement and secretary of Sanford Residence Hall.

Both Gooch and Safley are active in the North Carolina Conference of the United Methodist Church and both are very involved in their communities. Safley is on the board of directors to the Center for early Adolescence and formerly served on the Methodist College Alumni Association. He was president of the Middleburg Ruritan Club, the Vance County Mental Health Association and the Rowland Family Memorial Association. He was also a member of the Vance County Ministerial Association, is presently on the Board of Trustees for the Methodist Home for Children and a community volunteer for the North Carolina Department of Corrections and is a former mayor of Middleburg.

Gooch was president of the Washington County Cultural Arts Council, chairman of the board of directors of the Roanoke Developmental Center, Inc., director of the Roper Community Chorus and chairman of the Washington County Hospital Auxiliary.

He was a member of the Washington Choral Society, the Yokefellow Prison Ministry, and the Roper Community Library Board. He now serves on the board of the Chatham County Domestic Violence and Rape Crisis Program.



The Rev. Michael Safley (left) and the Rev. Ray Gooch (right) are congratulated by Vice President of Church/Community Relations Bill Lowdermilk after receiving Methodist College Medallions at commencement exercises held Tuesday afternoon, August 20. Both Safley and Gooch are 1972 Methodist graduates. (Photo by Ayers)

## Pulliam Wins Grant, Gubernatorial Nod

Bruce Pulliam, chairman of the department of social sciences at Methodist College, has been awarded a grant by the D'Archy McNickle Center for the History of the American Indian to attend a conference on the "Impact of Indian History on the Teaching of United States History."

Only sixty professors and editors across the nation were chosen to attend the conference which will be held on October 2-5 at the National Museum of American History of the Smithsonian Institute in Washington, DC.

Funded by the National Endowment for the Humanities (NEH), the grant offers participants a chance to assimilate information concerning the teaching of Indian history within American History.

Pulliam begins his twenty-third year as a member of the Methodist College faculty where he currently serves as faculty marshal.

Pulliam also has been appointed by Governor James G. Martin to the North Carolina Museum of History Associates Board of Directors. Pulliam received word of his selection in late April from Hal McKinney, assistant secretary to the North Carolina Department of Cultural Resources.

A member of the Methodist faculty since 1962, Pulliam holds degrees from Wake Forest and Western Carolina. He has also done additional advanced study at the University of North Carolina.

Beginning July 1, Pulliam will serve on the Board for four years.

## Rand Addresses Summer Grads

Summer commencement exercises at Methodist College were held Tuesday, August 20, at 2 p.m. in Reeves Auditorium on the Methodist College campus. State Sen. Tony Rand of Fayetteville presented the graduation address.

Rand, an attorney with the law firm of Rose, Rand, Ray, Winfrey and Gregory, was appointed to the North Carolina senate in 1981 and then elected in 1982 and re-elected in 1984. He represents the 12th District.

He holds both undergraduate and law degrees from the University of North Carolina at Chapel Hill. He is a member of the North Carolina Bar Association, Bar Association of the District of Columbia, American Bar Association and the American Judicature Society.

Active in civic and community organizations, Rand presently serves on the board of the Fayetteville Family Life Center, the board of advisors to Health Vote '85, the executive committee of the Cumberland County Auditorium

Commission, and the North Carolina Courts Commission.

In the Legislature, he is chairman of the Appropriations Base Budget Committee and vice chairman of the Judiciary IV Committee.

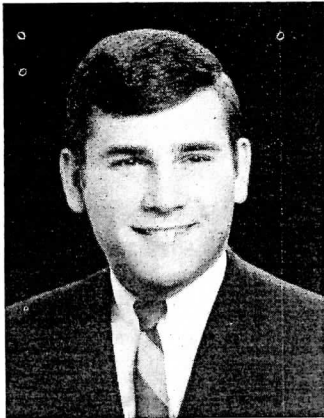
Twenty-nine graduates were awarded degrees:

Bachelor of Arts: Khalid Abdulla Al-Hitmi, Anthony Ambrose, Haruo Araki, Faiez Y. Athery, Kenneth R. Carlton, James C. Cooper, Nona C. Davis, Wilma J. Gillis, Angelia Gurley, Lynda J. Jones Jefferson, Mary Ellen B. Kelly, Beth A. Kirk, Flossie P. McGee, Emma J. McLean, Cleophas L. McMillan, Ronnie B. McNeill, Scott J. Parkinson, Ivan A. Perez De La Ossa, H.A. Schroer, Jr., Conrad D. Swick, Cheryl L. Wheeler and Roger M. Williams.

Bachelor of Science: Regina A. Hall Campbell and Gloria J. Kelly.

Associate of Arts: Donita M. Booker, Chester J. Flammini, Douglas D. Hartman, Rene Mendez, and Kathleen Steigerwalt.





# Tom Miriello '70: New State Director Of Alcohol And Drug Services

Sometimes top management positions are filled with people who know administration but who don't know the nuts and bolts of the business. That scenario plays frequently in state government --but not in the case of North Carolina's new State Director of Alcohol and Drug Services. Tom Miriello, 1970 graduate of

Methodist College in sociology, has come through the ranks in the alcohol and drug department of the NC Division of Mental Health. From his first year as the director of addiction programs for Cumberland/Sampson Mental Health in 1971, Tom has quietly and deliberately made that upward climb to the top state position in his field. During that first experience in Cumberland and Sampson counties, Miriello directed the two-county comprehensive treatment, intervention and educational alcohol and drug programs comprised of 42 employees.

Within three years, the Erwin (NC) native assumed the position of Regional Alcohol-Drug Coordinator for the South Central Regional Office. In this position, Miriello served as consultant and program auditor for community programs encompassing 20 counties.

A move to the North Carolina state headquarters was promoted by Miriello's promotion to State Director of Drug Programs, Alcohol and Drug Section in September 1975. He continued in this position, directing statewide drug services systems and supervising three program auditors, until his appointment to Chief of Operations Branch, Substance Abuse Section in January 1979.

"My time as Chief of Operations probably taught me more about management and administration than all the other positions," says Miriello, whose prior expertise lay in program development and implementation.

Tom apparently learned management well as his next appointment was Chief of Special Projects for the NC Division of Mental Health, Mental Retardation and Substance

Abuse Services, a position which required that he act as a management consultant to 15 hospitals and 41 community programs across the state.

"Tom has come up through the ranks -- learning the system from the grassroots level up to the state level," says a colleague in the NC Mental Health Division.

"That makes him a very popular choice as the state director!"

As a sociology major at Methodist, Tom completed his emphasis in counseling and his internship in mental health during his undergraduate years here. Since receiving his degree from Methodist, he has completed courses toward his graduate degree from the University of Miami and Rutgers University. He has also attended numerous special studies courses in his field including those at Appalachian State University, East Carolina University and the University of North Carolina.

Miriello has served on the board of directors for the NC Substance Abuse Professional Certification Board and the NC Drug Abuse Professional Certification Board as well as numerous private and drug residential care facilities. A certified drug abuse counselor himself, Tom is also a member of Who's Who in Health Care and a 1976 recipient of the Outstanding Young Men of America Award.

"The excitement of my job is the success stories of people we have helped along the way," says Miriello.

"You see them everywhere --leading happy, productive lives after receiving help from one of the treatment centers of therapists provided by North Carolina. The victories keep me going strong, knowing that we really are making a difference in some lives."

# New Nature Trail Opens

The new Methodist College nature trails are the brainchild of Dr. Linda Sue Barnes, an associate professor of biology at Methodist. Barnes received a \$1,000 grant for her project from the college's faculty enrichment fund this year. An additional \$200 is to follow in 1986 and the Lafayette Garden Club donated \$100.

With this monetary support and a crew of hard workers, Barnes set about creatively enhancing the trails that she said "were already there." She is quick to give credit to several other persons whom she considers to have been instrumental in the development of the trails. Mason Sykes and his maintenance crew were very helpful in hauling dirt and gravel and in lending the use of their vehicles to haul brush and rubbish from the trails.

Alan Mintz, a senior biology major, had been scouting for trails, locating and identifying plants, and actually working on the physical construction of the trails since day one. Other students who have worked on trail construction are Carol Dempster, David Lincoln, Sandra Thaler and Kris Smith.

The upper half-mile trail starts below the tennis courts while the lower trail begins behind the softball field. Sometimes following a winding stream and stopping occasionally where it flows over gently cascading falls, the lower trail dips one and one-half miles down to the Cape Fear River.

Barnes expressed surprise at the variety of plant life that she has already found. She has identified at least 75 flowering plants, 10 ferns and a representative amount of lichens and mosses, which includes the rare Club Moss presently on the National Preservation List. Along with Alan Mintz, Barnes even located some Jack-In-The-Pulpit previously not found in Cumberland County.

Current short-term plans include tons of crushed rock to gravel the muddy trails, improvised wooden steps for steep parts and temporary

trail markers to be replaced by permanent ones. Ambitious long-range plans include the desire to lengthen the lower trail into a loop of the back campus enabling displays of discovered micro-habitats to be shown. A bulletin board placed at the beginning of the trail would inform visitors what to look for and brochures could provide assistance and guidance. Eventually, Barnes would like to add picnic tables, benches and bridges.

Unfortunately, there seems to be a problem with vandalism by both children who live in the area and adults in four-wheel-drive vehicles. A little cooperation can go a long way in contributing to everyone's unspoiled enjoyment of nature.

Barnes and her nature trails were the focus of an excellent news article in the *Fayetteville Observer* in June. Barnes believes that "there's plenty of beauty right here if we just look around." With continued support from a number of groups, she hopes to continue a project that can educate Fayetteville residents about the natural beauty in their own "backyard." Not only is walking a great form of exercise, the nature trails are an interesting way to learn about the varied flora surrounding us.



Scenes of forest succession from the Methodist College nature trail. (Photo by Gimlich).

# New Staff

(Continued from page 1)

M.B.A. from Campbell University and a J.D. from NCCU; Dr. Kay Huggins, an associate professor of history with a B.A., a M.A., and a Ph.D. all from Duke University; and Jane Weeks Townsend, an

assistant professor of music and a M.M. from the New England Conservatory; and Sue O'Toole, counselor for special services. She holds a B.A. in sociology from Methodist College.



# Methodist College Grads Publish New Books

Ralph Waldo Emerson claimed that "Beauty is its own excuse for being" and two Methodist College alums have concentrated on two dimensions of beauty in books fresh off the presses.

Jim Darden, class of 1969, devotes his newest book to the beauty of flowers in *Great American Azaleas* (Greenhouse Press, 1985).

"The study of azaleas has been one of the most rewarding and intriguing exercises of my life," says Darden. "Whether surveying the rich history of these glorious plants, the seemingly endless list of varieties, or their culture and production, we are continually reminded of the amazing versatility of evergreen azaleas."

*Great American Azaleas* is a beautifully illustrated as well as highly informative volume covering these topics: azalea bloom colors, azalea flower forms, azalea blooming seasons, movement to America, master American breeders, modern American hybrid groups, planting instructions, and the best 300 azalea varieties.

Darden's first book, *The Greenhouse Book*, was the result of his experience as manager of the Turner Greenhouse Company from 1977 until 1979. He returned to his hometown of Clinton to open Darden's Nursery in 1979 -- a successful enterprise which now has wholesale, retail and landscaping divisions. In 1980, Darden was appointed chairman of the Depart-

ment of Horticultural Science at Sampson Technical College where he currently teaches.

After a stellar career as a top basketball player at Methodist and a dean's list student in biology, Darden received his B.S. degree in biology/education in 1969. He continued his education at Duke University, earning his M. Ed. degree in science education in 1972. During his tenure as a biological supply sales representative in Atlanta, Darden worked part-time at green Brothers Nursery and discovered both a lively interest in ornamental horticulture and a strong desire for a nursery of his own.

The combination of experiences in industry, business and education, coupled with his intense interest in azaleas and ornamental plants, led Jim to the publication of his second book. *Great American Azaleas* is available at selected bookstores and copies can be obtained from The Greenhouse Press, 1239 Sunset Avenue, Clinton, NC 28328 at a cost of \$9.95 per copy and \$1.50 shipping/handling cost. North Carolina residents also must pay \$.45 sales tax.

### THE BEAUTY OF POETRY

Nancy Ruth Best, class of 1964, has just published her first book of poetry entitled *The Birthing*. Published by Best Creative Touches of Four Oaks, NC, the 46-page book features poetry that explores

four dimensions of growth: Growth is Stillness; Growth is Pain; Growth is Movement, and Growth is A Wish for Life.

Best is currently serving as a United Methodist Minister in the North Carolina Conference and dedicated her book to her "sisters and brothers in Christ at Four Oaks United Methodist Church who have with grace and love given both time and space for its 'birthing'."

without interrupting thought. The pen-and-ink renderings reinforce the theme of movement throughout the book.

Best closes her first venture into the publishing world with her "A Wish For Life," offering the reader an image of life cluttered with shells. "May the perfect shells upon your beach/Lead you to the giver of every good and perfect gift;/And the broken shells/To the one who heals and makes all things new."

Copies of *The Birthing* are available for \$3.95 per copy and \$1.00 shipping/handling from Best Creative Touches, P.O. Box 980, Four Oaks, NC 27524. North Carolina residents include \$.18 per book for sales tax.



A Book of Poems  
by Nancy Ruth Best

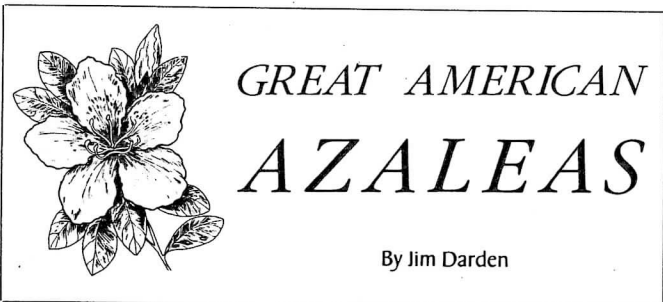
## Robinson Assumes Publications Post

FAYETTEVILLE -- Alan E. Robinson, former assistant director of public relations at Buena Vista College in Iowa, has assumed the duties of director of publications at Methodist College.

A native of Grand Junction, IA, Robinson received his education at Drake University in journalism. Prior to his position at Buena Vista College, Robinson served as a news feature writer with the Storm Lake (IA) newspapers. He also served as editor of two Iowa weekly newspapers, the *Paton-Churdan News* and the *Wapello Republican*.

Robinson's association with award-winning newspapers in Iowa led him to serve as a contest judge for the New England Newspaper Association Press Awards in the Best Special Section category in 1983. He also participated in the South Dakota Council for Advancement and Support of Education (CASE) annual summer conference in July 1984.

At Methodist, Robinson assumes the publications reins from former director Gwen Sykes, who was promoted to director of special projects at the college in July 1985. His responsibilities include coordination of all college publications, news bureau releases, student publications, and advertising at Methodist College.



## GREAT AMERICAN AZALEAS

By Jim Darden

Although Nancy indicates that her first poetry was written as a young child on tiny scraps of paper while sitting in a weeping willow tree in a neighbor's yard. *The Birthing* reflects both a sophisticated diction and a creative insight. The title poem confirms that maturity as it says "The sea spat me out upon the shore/Rough edges hewn smoother/By the rushing of the waters of time./Dead, yet alive; wounded, yet healed."

Illustrations by Pitt County artist Denise Hall punctuate the poetry

## No Lazy Days At Methodist!

The 1985 summer months at Methodist College have seen a greater and a wider variety of resident conferences than ever before. Over 3,500 people came to the campus for events ranging from quilting to the Methodist adult and youth conferences; from cheerleading to the Band Front camps.

The Tar Heel Quilter's Guild holds an annual weekend at Methodist College, but this year the Guild hosted the North Carolina Quilt Symposium. Four hundred quilters from various states and two foreign countries came for workshops on pattern drafting, floral patchwork, heirloom applique, Amish quilting and others. This was a new experience for the campus, and the Student Union took on a special quality with the display of various quilt designs and techniques.

Eighty United Methodist young people converged on the Methodist College campus on Sunday, June 16 for the North Carolina Conference Music Workshop. After four days of rehearsal, they left for Atlanta for a series of concerts. Under the direction of Jim Ogle, the assistant conductor of the North Carolina Symphony, the group learned and polished to concert quality such selections as "Glorificomus Te" by Eugene Butler, "Short Festival Te Deum" by Gustav Holst and "Elijah Rock" by Jester Hairston. Methodist College graduates participating in the workshop were Ray Gooch, chaplain, and Jeannie Flynn, counselor. The event was under the sponsorship of the Conference Youth Ministry Program headed by another Methodist College graduate, Mike Safley.

When 1,500 United Methodists came to campus for the meeting of the Annual Conference, all college programs came to a halt. The college facilities and personnel are dedicated to the hosting of this event and to insuring a smooth operation. The days prior to the opening of the Conference saw activity accelerate as Methodist College prepared to welcome the group.

The Eastern Carolina Band Front Camp was another new addition for 1985. It brought 400 high school color guards, majorettes and drum majors for a week of intensive training.

The United Pentecostal Family Camp brought people from babes-in-arms to grandmas and grandpas for a week of preaching, sharing and recreation.

The Annual Conference Session (ACS) of the United Methodist Youth Fellowship had a definite

Methodist College flavor with Safley '72 as the conference staff person responsible for the event; Gooch '72 serving as dean of men; and Peggy Ray '69 as the dean of women. All are Methodist graduates. Counselors who were Methodist College graduates included Cynthia Walker, Kathy Woltz, Eckie Lancaster and Faith Finch. President Hendricks taught an interest group and Vice President for Church/Community Relations Bill Lowdermilk was the resource person developing the theme: "Sowing the Seed . . . Reaping the Promise."

The East Coast Cheerleading Camp brought 575 high school cheerleaders to campus. The Student Union rocked with cheers, was plastered with posters and the sights and sounds of mounts and cheers.

The Conference Summer School provided 14 courses for 600 leaders in the North Carolina Conference of the United Methodist Church. The courses ranged from a study of the Book of Daniel to one entitled "The Church and Technology." Alumnus Robert Flynn was the creator of the Learning Center for Conference Summer emphasizing Native Americans, the book of Daniel and Evangelism.

Many North Carolina Methodists consider Methodist College the place to be in the summer for study, inspiration and enrichment. As the summer offerings grow, young people from all over the Eastern Seaboard will experience Methodist College as the place to be in the summer in preparation for cheerleading, band front techniques and spiritual enrichment.



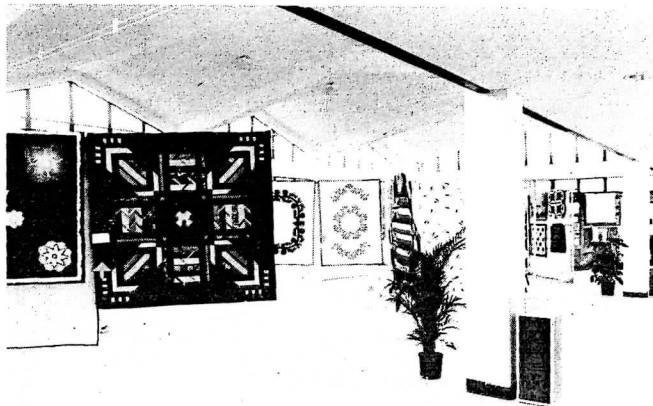
Eighty voices raised in harmony at the Youth Music Workshop.



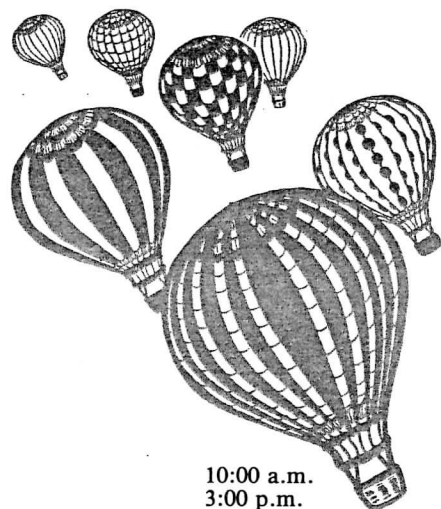
Bishop C.P. Mennick (left) congratulates Bill Lowdermilk on the establishment of a scholarship in his honor at the 1985 Annual Conference as President Hendricks and the Rev. Dr. Ernest Porter make the presentations. Over \$17,000 has been contributed to the scholarship.



District Superintendents (left to right) J.C.P. Brown, Sanford; William Sherman, Rockingham; and Herman Winberry, Fayetteville were part of the residence hall painting project coordinated by the Rev. Tom Holtsclaw, pastor of Campground United Methodist Church.



Prize-winning quilts were displayed in the Student Union at the Symposium.



An Invitation to Come Back

'Up, Up and Away with the Arts'

## HOMECOMING '85

October 11, 12 and 13, 1985

10:00 a.m.  
3:00 p.m.  
4:00 p.m.  
6:30 p.m.  
7:30 p.m.  
8:00 p.m.  
8:30 p.m.  
9:30 p.m.

8:00 a.m.  
9:00 a.m.

10:00 a.m.

11:00 a.m.

11:30 a.m. - 1 a.m.

12:00 noon  
12:30 p.m.  
1:00 p.m.  
1:30 p.m.  
2:00 p.m.

3:00 p.m.

4:00 p.m.

7:00 p.m.  
8:00 p.m.  
9:00 p.m.

11:00 a.m.  
12:00 noon  
1:00 p.m.  
2:00 p.m.

### Friday, October 11

Pep Rally, Student Union  
Tennis Tournament Begins  
Popcorn Theatre, First Performance, Snack Bar open  
Popcorn Theatre, Second Performance, Snack Bar open  
Recreation for Soccer Team, Cheerleaders and Parents  
**Byron in Hell**, Ian Frost as Lord Byron -Reeves  
Bonfire/Pep Rally - Outside Basketball Courts  
Casual Dance/Disco - Student Union

### Saturday, October 12

Alumni Board of Directors' Breakfast Meeting - Board Room  
Sidewalk Art Contest Begins - Around Bell Tower  
Annual Alumni Golf Tournament  
Alumni, Student and Faculty Art Exhibit -Student Union  
Popcorn Theatre Third Performance, Snack Bar open  
"20 Years of American Arts" - Discussion leader, Alvin Reiss of Adelphi University  
"Operation Balloonick" - Fayetteville Recreation Centers  
Cross Country Meet, MC vs. St. Andrews, home  
Lunch under the Bell Tower  
Band under the Bell Tower  
Chorus under the Bell Tower  
"20 Years of N.C. Art" -- Discussion of State Leaders  
Homecoming Parade  
Men's Soccer Game -- USC-Aiken  
Guided tour of Olde Fayetteville  
Tea with Anne Hathaway (Docudrama of Mrs. William Shakespeare) Alumni Dining Room  
Women's Soccer Game  
Alumni Soccer Game  
N.C. Composer recital with guest artists -Reeves  
Annual Alumni Banquet, Green Valley Country Club  
**Byron in Hell**, 2nd performance - Reeves  
Beaux Arts Ball, Green Valley Country Club  
(Homecoming Dance)

### Sunday, October 13

Worship Service -- Hensdale Chapel (Clown Ministry)  
Tennis Tournament continues  
Trip to Morehead Planetarium (Dr. Peyrouse)  
Annual Alumni Baseball Game and Bar-B-Q (immediately following game)

## It's Parents' Weekend, Too!

### SCHEDULE

(Also see other scheduled Homecoming events)

**Saturday, Oct. 12**  
Registration  
Breakfast with President and Mrs. Hendricks (President's Home)  
Parents' Council Meeting, Alumni Dining Room  
Academic Open House  
Lunch around the Bell Tower  
Tour of Olde Fayetteville & Downtown Excursion. (See other Homecoming Activities)  
Beaux Arts Ball - Green Valley Country Club (Homecoming Dance)

8:00 - 9:00 a.m.  
9:00 - 10:00 a.m.  
10 a.m.  
10:00 - 12:00 noon  
12:00 noon - 1:00 p.m.  
2:00 - 5:00 p.m.  
8:30 p.m. - 12:30 a.m.



## Twenty Years Of American Art To Highlight Homecoming

"Twenty Years of American art" is being celebrated at Methodist College on Saturday, October 12th. This is part of the national celebration being sponsored by the National Endowment for the Arts.

"North Carolina Arts: their past, present, and future" will be an afternoon feature. This discussion will feature state and national leaders in the arts. Chairing the panel will be Alvin Reiss, a nationally famous leader in arts management from Adelphi University.

On the 1:00 panel will be North Carolina arts management leaders Mary Regan, Executive Director of North Carolina Arts Council, Lawrence Wheeler, Deputy Secretary of North Carolina Cultural Resources, Ione Perry, Assistant Director of Program Approval for the Department of Public Instruction, Thomas Grail, Business Manager of the North Carolina Dance Theatre, and Mark Sumner, of Outdoor Drama Institute.

Two visual artists will be here, William Fields, portrait painter, and Doc McCulloch, electronic art educator.

Among the authors will be *Fayetteville Times* editor Roy Parker, *Pembroke Magazine* editor Shelby Stephenson, and North Carolina Poet Laureate Sam Ragan.

Musical composers attending will

include Robert Ward, former president of North Carolina School of Arts, and Doug Borwick, President of Composers Alliance of North Carolina.

Other artistic activities that day will include two one-person shows, "Presenting: Anne Hathaway" starring Fayetteville's Patty Joder, and *Byron in Hell* starring Ian Frost (the only event for which there is a

charge). There will be a Methodist College cabaret theatre production of Mark Twain's "A Medieval Romance," a sidewalk art contest, an art exhibit, Methodist College chorus concert, and a special concert of North Carolina composers Walter Saul, Pfeiffer College and Thomas Turner, University of North Carolina - Greensboro, playing their own compositions.

In the morning the keynote address on "20 Years of American Arts" will be given by Alvin Reiss editor of *Arts Management* columnist for *Vantage Point*.

For complete schedule of these activities or more information contact Dr. Jack Peyrouse, Methodist College, Fayetteville, North Carolina 28301, or call (919) 488-7110 ext. 212.

### Cultural Calendar Fall 1985

August 20	Graduation, Sen. Tony Rand, Speaker	2 p.m.	Reeves Aud.
August 23	Opening Convocation	10 a.m.	Reeves Aud.
August 31	Gravity's Last Stand (comedy, juggling)	8 p.m.	Student Union
Sept. 6-7	Koinonia Retreat	TBA	TBA
Sept. 18	North Carolina Symphony	8 p.m.	Reeves Aud.
Sept. 24	Gil Eagles (hypnotist, mentalist)	8 p.m.	Student Union
Oct. 9	Fort Bragg Division Band	10 a.m.	Reeves Aud.
Oct. 11-13	HOMECOMING		
Oct. 11-12	Board of Church & Society		
Oct. 17	Fayetteville Symphonic Band	8 p.m.	Reeves Aud.
Oct. 14-18	North Carolina Alcohol Awareness Week		
Oct. 21-25	National Alcohol Awareness Week		
Oct. 24-27	FALL BREAK		
Oct. 29	Community Concerts — Tommy Dorsey Band	8 p.m.	Reeves Aud.
Nov. 2	Miss Teen Fayetteville	8 p.m.	Student Union
Nov. 6	Founders' Day	10 a.m.	Reeves Aud.
Nov. 7	Iterations III	7:30 p.m.	Reeves Aud.
Nov. 9	Fayetteville Symphony	8 p.m.	Reeves Aud.
Nov. 21-23	Drama Production	8 p.m.	Reeves Aud.
Nov. 27-31	THANKSGIVING VACATION		
Dec. 2	Oral Interp	10 a.m.	Hensdale Chapel
Dec. 3	North Carolina Symphony	8 p.m.	Reeves Aud.
Dec. 7	Dance Theatre of Fayetteville	8 p.m.	Reeves Aud.
Dec. 8	Moravian Love Feast	6 p.m.	Hensdale Chapel
Dec. 8	Dance Theatre of Fayetteville	8:15 p.m.	Hensdale Chapel
Dec. 10	Community Concerts — Greg Smith Singers	3:30 p.m.	Reeves Aud.
Dec. 13	Graduation	8 p.m.	Reeves Aud.
Dec. 14	Fayetteville Symphony and Civic Chorus — Handel's "Messiah"	2 p.m.	Reeves Aud.
Dec. 19	Fayetteville Symphonic Band	8 p.m.	Reeves Aud.

### Mainstream

October 12 is Homecoming, the place is Green Valley Country Club, and the band is Mainstream, probably one of the hottest bands to emerge from the Carolinas. From its debut 10 years ago, they have played all the big ones. The explosive stage presence of its experienced personnel makes Mainstream a guaranteed draw. To this add the best light and sound system of any tour group on the circuit and you've got Mainstream.

The group was founded by Ron Carden who is now manager of this and other bands. They have a top 40 play list and have received excellent remarks from previous "gigs."

The group consists of Tim Alston, bass guitarist and background; Bill Butler, background vocals, piano, clarinet, string orchestrator, pro-I synthesizer; Scott Hanson, drums, background vocals; Flay Blalock, keyboards and background vocals; Alan Shiffman, lead and background vocals and lead guitar; and Ron Hicks, keyboards and background vocals. Looks like an event you will not want to miss, BE THERE!



Presenting Mainstream...the entertainment for the 1985 Homecoming Dance, slated for 9 p.m. on Saturday, Oct. 12, at Green Valley Country Club. Band members are, left to right, Bill Butler, Tim Alston, Flay Blalock, Alan Shiffman, Scott Hanson and Ron Hicks.

## FROM THE PRESIDENT...



M. Elton Hendricks  
President

Dear Alumni,  
Methodist College alumni just completed their most successful fund drive in history. Seven hundred alumni contributed over \$34,000.00. This represents a 282% increase in the number of alumni contributors and a 172% increase in the amount contributed OVER THE PAST TWO YEARS. I wish to express my heartfelt gratitude personally to all of you -- it is your participation in the life of Methodist College that gives our institution one of its greatest strengths.

In the report that follows you will find the alumni contributors listed. We are extremely proud of these key friends and are particularly indebted to them for their loyalty and leadership. Please notify the Alumni Office if you find any errors in the listing of your name.

We appreciate very much your partnership with us at Methodist College. Your support, financial as well as in gifts of time and influence, does make a difference in the life of this College. To the many alumni whose support made 1984-85 a banner year ... thank you!

*M. Elton Hendricks*

## PRESIDENT'S CLUB

(\$1,000-4,999)

- \*Jerry Keen
- \*Paul & Adita Marshall
- Louis Spilman, Jr.

\*includes matching gift

## GREEN AND GOLD CLUB

(\$500-999)

- David R. Altman
- Mildred Wilkey Blackwell
- Ralph F. Hoggard
- Mary Elizabeth Ray (Beth)
- Stephen & Pam Whilden
- David T. Woodard

## SILVER CLUB

(\$250-499)

- \*J. Steven Bryan
- John W. Butler
- Louise F. Council
- G. Gordon Dixon
- Murray O. Duggins
- Ray T. Gooch
- Lynn S. Gruber
- \*David & Wanda Herring
- Victor C. Mansfield
- Ann McKnight Sutton
- \*Walter G. Townley
- Gillian P. Wise
- \*Harvey & Mary Wright

\*includes matching gift

## CENTURY CLUB

(\$100 - 249)

74 Contributors  
37.0% Increase

- Margaret S. Alexander
- John J. Avinger, Jr.
- \*Malvern S. Barrow, III
- James A. Bledsoe
- Appie W. Bolton
- Linda Bruton Bourland
- John Wayne Brown
- Lynn Moore Carraway
- Patricia M. Cashion
- \*Mary Hansen Cella
- John & Brenda Chilton
- Ann Watson Cimaglia
- Samuel J. Clark, III
- \*Charlotte Coheley
- \*Samuel Compton
- Mary Sheldon Craft
- John G. (Chip) Dicks, III
- J.C. Downing
- \*Christopher G. Drew
- John K. Elkins
- Cheryl L. Epperson
- Bill & Jackie Estes
- Elizabeth D. Farnum
- Jimmy & Sandra Fleishman
- Rita J. Foley
- Dan W. Gore
- Gary Lynn Graham
- \*Walter Henry Grimsley, III
- Steve H. Harden
- William & Judy Harrison
- \*Marion Lee Hawkins
- Tammy Hightower
- \*Ginger Workman Holland
- Jerry & Faye Huckabee
- Jean Hutchinson
- James W. Johnson
- Mark C. Kendrick
- Virginia Knox Kern
- Lois Lambie
- James F. Loschivo
- Howard & Vicki Lupton
- Dale W. Marshall, Jr.
- Kreetha Mattanaviroon
- Charles T. Mazza
- Regina McLaurin
- Linda C. McPhail
- Thomas F. Miriello
- \*Jerry & Robin Monday
- William G. Morgan, Jr.
- Larry & Betty Neill Parsons
- Albert R. Pierce
- Lorenzo & Betty Plyler
- \*Valerie Fawess Pompa
- Sarah Brady Satterfield
- \*Roger G. Simmons
- Kenneth E. Solesby
- Myres & Rebecca Stanfield
- David K. Taylor, Jr. (Bud)
- \*E. Roger Williams
- \*Gerri Norman Williams
- \*M. Kent Wilmoth

Norma Womack  
James & Fran Zeigler

\*includes matching gift

## BELL TOWER

(\$50 - 99)

110 Contributions  
35.8% Increase

- Samuel Q. Atchley
- Stephen & Marilyn Atkinson
- Helen Barnhill Barrington
- \*Ronald D. Baucom
- Guy (Bud) Beattie, Jr.
- \*A. Paul Brill, III
- Joanna Walker Brown
- Wesley F. Brown
- J. Larry Buffaloe
- \*Sandra Matthews Carter
- Ralph Eugene Chester, Jr. (Chet)
- Patricia B. Clayton
- \*Eugene Coats
- Robert & Teresa Collins
- F. David Cowart
- Robert J. D'Alessandro
- Frank A. Dawson
- Clayton & Lynda Deaton
- Tommy & Betty Jo Dent
- James L. (Buddy) Dodrill
- Leonard & Coleen Doucette
- Frederick & Gabriele Egenberger
- \*John & Marsha Faucette
- Herbert R. Finger, Jr.
- W. Robert Frazier, III
- William Freeman
- \*Leslie French
- Lawrence B. Green
- Owen A. (Alex) Hager, II
- Madeline Renee Hairston
- John W. Handy
- John Haracivet
- Ambrose & Debbie Hill
- Glen & Patricia Hinnant
- Rodney F. Hobbs
- Arthur & Linda Holleman
- Greg & Jane Howard
- Jack M. Hunter
- Frances Hall Jackson
- Thomas H. Jones
- \*Wanda Moorefield Jones
- John A. Jordan, III
- Gail Harrison Joyner
- Roland J. Lamb
- Robert H. Lapke
- Barbara Simmons Lawson
- David M. Lewis
- Rickey & Bonnie Lindsley
- Stephen A. Magnotta
- Roy Ken Martin
- \*Mary Martin McCalman
- Mary Etta B. McFadyen
- H. Dale Meeks
- George & Linda Miller
- \*Ralph & Gail Miller
- Cheryl Coble Mitchell
- Joanna Cherry Palumbo
- Robert J. Pelham
- David & Melinda Perry
- Jim & Tonie (Minges) Peterson
- William Presnell
- Michael W. Saffley
- \*Michael & Mary Saunders
- Judy Bruton Sharpe
- Eugene B. Smith
- Linda Y. Smith
- Sue James Smith
- Jim & Laura Stanley
- Wayne & Kathy Stewart
- \*Sandra J. Stolzer
- Ruby McDuffie Strouse
- W. Keith Sutton
- \*Teresa Self Swain
- Gwen Pheagin Sykes
- Kenneth & Denise Sykes
- Rainelle Dixon Tinsley
- R. Wayne Trousdale
- Kenneth S. Valentine
- Joy K. Vallery

- Theresa Zahran Vaught
- Richard W. Vieth
- Cynthia A. Walker
- Randy & Donna Wall
- \*E. Walter White
- \*Robert T. Wilson, Jr.
- William A. Wolfe
- Kathryn E. Woltz
- Jerry C. Wood
- Jean R. Young

\*includes matching gift

## PATRON'S CLUB

(\$25-49)

240 Contributors

- Susanne Abell
- Grady & Terri Alexander
- Ruth Ambrose
- Howard & Lynn Arden
- Carol W. Baldwin
- L. Curtis Barnes
- Mathew A. Baselici
- Keith & Sherree Baumgardner
- Debbie Bright Beavers
- Noland Becker
- Carl C. Birk, Jr.
- Paula K. Bisby
- Jeff Blackmon
- Ann DuVal Blalock
- Randy C. Blanchard
- Steve E. Blanchard
- Evelyn B. Bonner
- Kathy Richardson Borrelli
- Thomas Bosquet
- Barry Box
- Olivia Godwin Bradley
- William & Lynn Breeden
- Herman & Doris Britt
- Arthur D. Brown, Jr.
- Marie-Paule Deshaies Brown
- Maria Lisa Bryant
- Betty Graham Bunge
- Susan Meyers Burca
- Cathy Butler
- Amelia Leimone Caison
- William B. Carstarphen
- A. Wayne Carter
- Brian & Marie Cash
- Jimmy R. Cash
- Edward & Susan Castle
- Bob Castona
- Jeffrey & Diane Cavano
- Maryellen Swindler Church
- Joe H. Clayton
- R. Travis Clements
- J. Denny Cole
- Keith & Ann Cook
- William Costin, Jr.
- Jerry Cribb
- William Crompton
- Diane Croom
- Lee Culpepper
- William E. Cummings
- T.F. Daniels
- Diane Long Dennis
- Michael J. Dennis
- A.G. Mason Dirickson
- Kathy Ditty
- Claudia H. Dudley
- Michael S. Ellis
- Victoria S. Etheridge
- Ada Ruth Evans
- Mildred Evans
- Harriet Gillis Faircloth
- Kathryn Erranton Faison
- Linda K. Famuliner
- Gloria Stanfield Farquhar
- William F. Faulkner
- C. Linwood Ferrell
- Gary & Sheila Ferrell
- Faith E. Finch
- Van Fletcher
- Robert & Jeannine Flynn
- Carl D. Ford, Jr.
- David L. Foster
- Danny R. Fowler

Morris D. Francis  
Virginia D. Frye  
Gary & Kitty Gainey  
John Gardner  
Lee Garvin  
Penny C. George  
Michael Gillmer  
Clifford Gissell  
Patsy J. Gordon  
Janet Graham  
Winnie M. Grannis  
Joan Hobbs Gray  
Robert W. Griffin  
Samuel Guy  
Margaret C. Haigh  
Cynthia L. Hanlin  
Charlotte S.B. Hardison  
Carson Harmon  
Wyatt Harper  
J.C. Harris, III  
Lawrence L. Harrow  
Earl E. Hemminger  
R. Allen Heatwole, Jr.  
Mark & Rebecca Hendon  
Zula McPhaul High  
Brenda Herring Hiltner  
Rodney F. Hobbs  
Alan Holden  
Sallie King Hollis  
Daniel L. Hood  
Cynthia Allen Horne  
Stephen Houston  
William M. Howard  
Elmer C. Hubbard  
Julia P. James  
Robert & Laura Johnson  
Ruby Wilson Johnson  
Donald & Wanda Jones  
Gary D. Jones  
Ruth B. Jones  
Kevin & Patty Jorgenson  
Walter & Sylvia Kennedy  
Diane B. Kerner  
Trena Barfield King  
Frederic J. Koch  
Lloyd A. Koonce  
John T. Kuiken  
Douglas Kump  
James D. Labelle  
Evan & Susan Lacy  
Pearl G. Lee  
Nancy B. Caughey LeVine  
Anne B. Lineberger  
Pat McCallum Livingston  
Frank R. Lopes  
Cabell Luck, Jr.  
Sherry Scott Madison  
Chester S. Makowski  
Ann Maness  
Ray Manning  
Patricia Marples  
Larry E. Martin  
Margaret A. Martin  
Brent A. Matthews  
L. Richard Meissner, Jr.  
Leslie Mengel  
Lynn Evans Midgett  
Elmer R. Midgett, Jr.  
Lorna G. Miller  
Betty Milligan  
Caroline C. Milner  
Anita Wiggs Missal  
Mark C. Mooney  
Philip & Janet Mullen  
Bobby C. McAlpin  
Teresa H. McCaskey  
Delia Hall McCloskey  
Harriett S. McDonald  
Marsha S. McIntyre  
Lavinia Moore McKee  
Amos McLamb  
Jocee E. McLaurin  
Larry S. McMillin  
Kim C. Nazarchyk  
Eugene & Marianne Odum  
Leta Smith Olson  
Allen & Bonnie Osborne  
Ernest W. Parker  
Leasel S. Pawley  
Ann M. Darden Pope  
Kendall Clark Powers  
Wayne Preslar  
Sylvia Vessels Price  
Laura Byrd Rambeaut  
Janet M. Raskin  
Elaine Ratliff

Lana Eckard Ray  
Peggy Barbee Ray  
Marvin & Ellen Rea  
Robert B. Reaves  
James H. Register, Jr.  
Charles M. Rhodes  
Elmer S. Richards  
Jeff Riddle  
Ronald & Jan Roegiers  
Ray & Marjorie Roof  
George D. Roraback, Jr.  
Mildred Dexter Rosell  
John M. Rowe, Jr.  
Doris Rulnick  
Paul & Yvette Sanderford  
Vello Savi  
Patty Smith Schob  
Peggy Hales Scott  
Kathryn Carlson Sellier  
Gay Davis Sexton  
William L. Shipley  
Patricia Hardee Smith  
Raymond H. Smith, Jr.  
Marcia Smoak  
Kenneth & Mary Spears  
James W. Spence  
Corinthea (Rennie) Stack  
Fred Stanton  
Rebecca Stone Starling  
David Lyndon Steven  
Linda & Bruce Stevens  
Rebecca Stephens Strickland  
Teresa W. Tanner  
Charles Franklin (Frankie) Taylor  
Gary & Virginia Teachey  
Harold J. Teague  
William F. Thomas  
Ronald & Connie Thompson  
R. Wayne Thompson  
Linda Trudeau  
Patricia Turner  
Robert B. Turner  
Pat Waterfield Ulmer  
John L. Vereen  
Stephen V.N. Vo  
Jennifer Leggette Walden  
Steven and Susan Walker  
J. Lee Warren, Jr.  
Eddie Washington  
Daniel T. Wemyss, Jr.  
Robert D. Wham, Jr.  
Marian Wells Williams  
Shirley Abbott Wilson  
Brian & Norma Wingo  
Ernest W. Woodcock  
Livius & Mary Jo Worrell  
David L. Yount  
Jaci W. Zwan

**Class of '64**  
25 Contributors  
40.9% Participation  
8.0% Increase

Guy (Bud) Beattie, Jr.  
Alton Bethea  
Robert C. Brunel  
Betty G. Bunce  
John L. Cade, Jr.  
Patricia M. Cashion  
Ann Watson Cimaglia  
Louise F. Council  
George F. Dempsey  
J.C. Downing  
Mildred Evans  
Lee Garvin  
Ralph Hoggard  
Jack M. Hunter  
James W. Johnson  
Virginia Knox Kern  
Robert H. Lapke  
Harriett S. McDonald  
Amos William McLamb  
H. Dale Meeks  
Betty Neill Parsons  
Louis Spilman, Jr.  
Harold J. Teague  
William A. Wolfe  
Jerry C. Wood

**Class of '65**  
18 Contributors  
18.9% Participation  
38.5% Increase

David R. Altman  
John Avinger  
Paul Brill, III  
Herman A. Britt  
Susan Meyers Burbage  
Eugene B. Coats  
D. Keith Cook  
Gary Lynn Graham  
Lawrence B. Green  
David Herring  
Jerry Keen  
Doris Rulnick  
Rebecca Stone Starling  
Suzanne Rouse Stork  
Walter R. Turner  
Cynthia A. Walker  
E. Roger Williams  
Fran Abell Zeigler

**Class of '66**  
29 Contributors  
27.8% Participation  
38.1% Increase

Luther Curtis Barnes  
Doris Beard Britt  
Barbara Hauser Bryan  
Ann Scott Cook  
Gordon Dixon  
Murray O. Duggins  
Gloria Stanfield Farquhar  
John Goetz  
Dan W. Gore  
Robert W. Griffin  
John W. Handy  
Wanda Herring  
Roger B. Hobgood  
Jerry Huckabee  
Gail Harrison Joyner  
Trena Barfield King  
Janet McChesnay Manning  
Charles T. Mazza  
Norma B. McNally  
L. Richard Meissner, Jr.  
Anita Wiggs Missal  
Grace E. Mitchell  
Allen Osborne  
Peter E. Petroutsa  
Marie Zahran Reale  
Robert Bingham Reaves  
John M. Rowe  
Ella Hall Smith  
Charles Franklin Taylor

**Class of '67**  
34 Contributors  
30.0% Participation  
41.7% Increase

Margaret S. Alexander  
John T. Baranowski  
Wanda Carter Beard  
Michael (Mickey) Benton  
James A. Bledsoe  
Ann Watson Bowen  
Maryellen Swindler Church  
James L. (Buddy) Dodrill  
Claudia H. Dudley  
Virginia Dove Frye  
Joan Hobbs Gray  
John J. Haracivet  
Carson Harmon  
Jean Hutchinson  
Nancy Caughey LeVine  
Cabell Luck, Jr.  
Dale W. Marshall, Jr.  
Larry E. Martin  
Leslie J. Mengel  
Elmer R. Midgett, Jr.  
Mary (Bunnie) Osborne  
Constance R. Parks  
George J. Pearce

James Harmon Register, Jr.  
Mary Segesky Saunders  
Michael Saunders  
Carolyn Nunery Sellers  
Judy Bruton Sharpe  
Patricia Hardee Smith  
Myres T. Stanfield  
Ann McKnight Sutton  
Theresa Zahran Vaught  
Daniel T. Wemyss, Jr.  
James M. Zeigler

**Class of '68**  
45 Contributors  
26.7% Participation  
No Increase

Barbara Meier Baranowski  
Malvern S. Barrow, III  
Wayne Beard  
Kathy Richardson Borelli  
William H. Breeden  
Catherine R. Bryant  
Sandra Thomas Carter  
Pat B. Clayton  
William Mac Council  
Lee Culpepper  
Terry F. Daniels  
James M. Fleishman  
Sandra Strickland Fleishman  
Billie Staley Forman  
Leslie French  
John H. Gardner  
L. James Gosier  
W. Mark Hendon  
Faye Cannon Huckabee  
Julia P. James  
Brenda K. Johnson  
Gary D. Jones  
James D. Labelle  
Barbara Simmons Lawson  
Johnny B. Lipscomb, Jr.  
Pat McCallum Livingston  
W. Terry McPherson  
Anne Hook Pifer  
Elaine Ratliff  
Paul C. Reinert  
Donna Davis Sandusky  
Walter J. Shearin  
Eugene B. Smith  
Jerry L. Smith  
Rebecca Munn Stanfield  
Gwen P. Sykes  
D.K. (Bud) Taylor, Jr.  
R. Wayne Trousdale  
Patricia Waterfield Ulmer  
Ethel G. Warren  
Gerri Norman Williams  
Rebecca Graham Williamson  
Ernest W. Woodcock  
Mary Fermanides Wright  
David L. Yount

**Class of '69**  
57 Contributors  
21.3% Participation  
No Increase

Marilyn Every Atkinson  
Stephen B. Atkinson  
Jeff A. Blackmon  
Steve Blanchard  
Appie W. Bolton  
Linda Bruton Bourland  
Susan Davis Bramer  
Lynn Boone Breeden  
Annette Usher Budd  
Paula M. Caddell  
Wade H. Childers, Jr.  
Barry L. Childress  
Brenda Tripp Chilton  
John T. Chilton  
J. Denny Cole  
Sammy Compton, Jr.  
A.G. Mason Dirickson  
Edward L. Dunn  
Robert E. Ellis  
Jackie Jeffreys Estes  
William P. Estes  
Charles Linwood Ferrell



# ALUMNI HONOR ROLL

Methodist College TODAY

August 1985

Page 10

Susan Keeth Fertil  
Carl D. Ford, Jr.  
Glenn Greene  
Regina Keeter Hall  
Steven H. Harden  
Wyatt Harper  
Belinda Rouse Hawley  
Zula McPhaul High  
Rodney F. Hobbs  
Arthur Alonze Holleman  
Linda Perryman Holleman  
Stephen J. Houston  
John Alfred Jordan  
Richard B. Lindner  
James F. Loschiavo  
Delia Hall McCloskey  
Mary Etta B. McFadyen  
Jesse Muldrow  
JoAnna Cherry Palumbo  
Peggy Barbee Ray  
Marjorie Roof  
Sharon Sladd Sanders  
Thomas Sanders  
Raymond H. Smith  
Kenneth E. Solesby  
Fred M. Stanton  
David Lyndon Steven  
Joyce King Stewart  
Sandra Johnson Stotzer  
Keith Sutton  
Jeannie Parker Swink  
Robert H. Swink  
Connie Underwood Thompson  
Richard W. Vieth  
Martha (Eve) Mullen West

**Class of '70**  
**52 Contributors**  
**21.1% Participation**  
**No Increase**

Susanne Donelly Abell  
Teri Walton Alexander  
Howard B. Arden  
Lynn Seacord Arden  
Ann DuVal Blalock  
Olivia Godwin Bradley  
Amelia Leimone Caison  
William Baker Carstarnon  
Sandra Matthews Carter  
Barbara Powell Copeland  
Dianne Williams Creed  
Helen E. Crowley  
Leannah White Culbreth  
Doreen C. Dallas  
William F. Faulkner  
Herbert R. Finger, Jr.  
Robert Clark Flynn  
Barbara Schutz Gross  
Samuel P. Guy  
Brenda Herring Hiltner  
Brenda McArthur Horne  
James K. Horne  
Ruth B. Jones  
Patricia B. Jorgenson  
Carolyn Garrison Kneas  
Linda Burns Lingerfeldt  
Sherry Scott Madison  
Linda Helms Millar  
Regina McLaurin  
Linda McPhaul  
Thomas F. Miriello  
Eugene Odom  
Marianne Snowden Odom  
Carol DeSantos Olson  
Leta Smith Olson  
Ronald Olson  
Robert M. Patterson  
Linda Crumpler Pearce  
Jim Pifer  
Valerie Fawess Pompea  
Ann Darden Pope  
Laura Byrd Rambeaut  
Lana Eckard Ray  
Kathy Carlson Sellier  
Roger G. Simmons  
Gayle Etheridge Simons  
Linda Y. Smith  
Sue James Smith  
Walter G. Townley  
Mary Monroe Wade  
Linda Hall Warren  
Harvey T. Wright, II

**Class of '71**  
**47 Contributors**  
**17.6% Participation**  
**No Increase**

John Wayne Brown  
Cathy Butler  
John W. Butler  
Lynn M. Carraway  
Joe H. Clayton  
Robert D'Alessandro  
Ada Ruth Evans  
Jeannine Faulkner Flynn  
Anne Topping Greene  
Wanda Taylor Gregory  
Owen A. (Alex) Hager, II  
Peggy Scott Hales  
Ambrose Powell Hill  
Debbie Pender Hill  
Alan Holden  
Sallie King Hollis  
Duncan P. Hughes, Jr.  
Laura Edwards Johnson  
Robert W. Johnson  
Thomas H. Jones  
Elizabeth Loy King  
Frederic J. Koch  
David M. Lewis  
Russell H. Lyles  
Margaret A. Martin  
Lynn Evans Midgett  
George S. Millar  
Caroline C. Milner  
Jerry R. Monday  
Mary Helen Pearsall  
Albert Richard Pierce  
William M. Presnell  
Janet M. Raskin  
Ronnie Roberts  
Jan Miller Roegiers  
Ronald Roegiers  
Raymond H. Roof  
Bruce E. Stevens  
Linda Cherrix Stevens  
Teresa Self Swain  
Sara Vann Taylor  
Gary Teachey  
Ronald A. Thompson  
Jennifer Leggett Walden  
Pamela Teer Whilden  
Stephen Whilden  
David T. Woodard

**Class of '72**  
**48 Contributors**  
**20.4% Participation**  
**4.3% Increase**

Grady Alexander  
Dory Kestner Anderson  
Samuel Q. Atchley  
Vivan M. Autry  
Mathew A. Baselci  
Debbie Bright Beavers  
R. Travis Clements  
William J. Costin, Jr.  
Cletus Everitt Cronrath  
Clayton William Deaton, Jr.  
Christopher G. Drew  
Barbara Sooy Ewan  
W. Robert Frazier  
Kathryn Cook Gainey  
Ray Thomas Gooch  
Lynn S. Gruber  
Charlotte Bridge Hardison  
Judy Carroll Harrison  
Gerald Emery Hobbs  
Nadia Holinko  
L. Thomas Jones  
Laura Jean Bill Kamionka  
Danny A. King  
Alonzo (Lonnie) Kirby  
Hazel Linn  
Gregory Liss  
Jane Moore Liss  
Larry E. Lugar  
Sharon St. Clair Lugar  
Howard J. Lupton  
Stephen Anthony Magnotta  
Alan Maness

Lena Johnson Massengill  
Bobby McAlpin  
Terry Houff McCaskey  
Janet Conard Mullen  
Donna Shaw Pleasant  
Michael Wayne Saffley  
Paul L. Sanderford  
Sarah Brady Satterfield  
Donald V. Snelgrove  
James Walter Spence  
Gregory L. Strobel  
Virginia Aydlett Teachey  
Rainelle Dixon Tinsley  
M. Kent Wilmoth  
Donald Ray Womble  
Livius F. Worrell, Jr.

**Class of '73**  
**56 Contributors**  
**24.4% Participation**  
**40.0% Increase**

Margaret Corbin Bledsoe  
JoAnne Walker Brown  
Vicki Barefoot Brown  
Wesley F. Brown  
J. Steven Bryan  
Jane Stroud Cade  
Marie Averitte Cash  
Edward R. Castle, II  
Peggy Bland Chason  
Pete M. Chason  
Ernest L. Conner  
Eugene R.M. Cote  
Bonnie Herring Crabtree  
Glen J. Cronrath  
Michael J. Dennis  
John G. (Chip) Dicks, III  
Jennifer Barnes Fann  
Rita J. Foley  
Gary W. Gainey  
Penny C. George  
Janet Graham  
Winnie McBryde Grannis  
Walter Henry Grimsley, III  
J.C. Harris, III  
Jonnie B. Hollingsworth  
Theresa Glynn Hudson  
Kevin J. Jorgenson  
Lloyd A. Koonce  
Evan H. Lacy, III  
Susan R. Lacy  
Roland J. Lamb  
Vicki Bullock Lupton  
O. Ray Manning  
Paul G. Marshall  
Lavinia Moore McKee  
Chester S. Makowski  
Ralph Miller  
Charlie Kim Nazarchyk  
Robert F. Pelham  
Daryl Oglesby Poulk  
J. Fletcher Poulk  
Regena Brown Proctor  
Mary Elizabeth Ray (Beth)  
Geroge D. Roraback, Jr.  
James Rowlette  
Carolyn D. Scoggins  
Alfred Robert Searle  
Christine G. Slappey  
Marcia Smoak  
Jerry F. Stone  
Nell B. Thompson  
Ralph Wayne Thompson  
Robert B. Turner  
Kenneth L. Williams  
Kathryn E. Voltz  
Mary Jo White Worrell

**Class of '74**  
**43 Contributors**  
**19.1% Participation**  
**22.8% Increase**

P. Nolan Becker  
Barry A. Box  
Roger Brown  
Meredith Stone Cade  
Brian Cash  
Susan Kastner Castle  
Mary Hansen Cella

Samuel J. Clark, III  
George B. Copeland  
Russell D. Cox  
Coleen Shaw Doucette  
Leonard F. Doucette  
Danny R. Fowler  
Morris D. Francis  
William Freeman  
William C. Harrison  
Marion Lee Hawkins  
Becky McDiarmid Hendon  
Glen Hinnant  
Elmer Charles Hubbard  
Linda Baker Huff  
Lee Sloan Kesler  
Douglas C. Kump  
Frank K. Layton, Jr.  
Sandra Atwood Leechford  
Oland B. Little  
Frank R. Lopes  
Alfred E. Marlowe  
Kreetha Matitanaviron  
Brent A. Matthews  
Lorna Davidson Miller  
Robin Eckley Monday  
Phillip L. Mullen  
Kendall Clark Powers  
Mary Gosier Rowlette  
Yvette Rosa Sanderford  
Kenneth Sykes, Jr.  
Esther Banks Temple  
Kenneth S. Valentine  
Joy K. Vallery  
Edgeton M. Vaughan  
Randy Wall  
Marian Wells Williams

**Class of '75**  
**32 Contributors**  
**18.3% Participation**  
**10.3% Increase**

Evelyn Benson Bonner  
Polly Ann Bridge  
Victor N. Carnevale, II  
Robert R. Castona, Jr.  
Sarah Edge Cessna  
Diana Long Dennis  
John K. Elkins  
John A. Faucette  
Marsha G. Faucette  
Gary L. Ferrell  
Shelia Bunce Ferrell  
Faith E. Finch  
Clifford J. Gissell  
Patricia Hinnant  
Wanda Moorefield Jones  
Sylvia Landis Kennedy  
Debbie Cooke  
Mary Martin McCalman  
Betty Milligan  
Cheryl Coble Mitchell  
Charles M. Rhodes  
James Donald Rollins  
William Louis Shipley  
James R. Stanley  
Brent Ogburn Stroud  
Pamela Walker Tatum  
William F. Thomas  
Ralph E. Thompson  
Donna Blalock Wall  
J. Lee Warren, Jr.  
Norma Womack  
Deborah Dixon Wood

**Class of '76**  
**11 Contributors**  
**7.9% Participation**  
**No Increase**

G. Thomas Dent  
David Lee Foster  
Daniel L. Hood  
John T. Kuiken  
James Richard McDowell  
Larry S. McMillin  
Gail Vaughn Miller  
Tonie N. Minges  
Sue Duffitt Richards  
Mildred Dexter Rosell  
Robert D. Wham, Jr.

**Class of '77**  
**24 Contributors**  
**15.6% Participation**  
**50.0% Increase**

Ronald D. Baucom  
 Keith Baumgardner  
 Sherree Kinter Baumgardner  
 Marie Beane  
 Joseph F. Brown  
 Marie-Paule Deshaies Brown  
 Marie Berekman Castanes  
 David Q. Cummings  
 Frank A. Dawson  
 Betty Jo Mitchell Dent  
 Gail Ward Ellis  
 Michael W. Gillmer  
 Ginger Workman Holland  
 Jane Peterson Howard  
 Walter W. Kennedy  
 Victor Mansfield  
 Yvonne Walker McDowell  
 Larry Parsons  
 James M. Peterson  
 Ellen Pruden Rea  
 J. Marvin Rea  
 Rebecca Stephens Strickland  
 Eddie J. Washington  
 Virginia Moore Williams

**Class of '78**  
**30 Contributors**  
**23.0% Participation**  
**100% Increase**

C. Douglas Akers  
 Helen Barnhill Barrington  
 Carl C. Birk, Jr.  
 Randy C. Blanchard  
 Cheryl Hulin Brown  
 Larry Buffaloe  
 A. Wayne Carter  
 Jimmy R. Cash  
 Sara Young Chester  
 Clifton Scott Culbreth  
 Sherrie Horne Culbreth  
 Beverly Cahoon Dixon  
 Gabriele W. Egenberger  
 Robert Scott Elwell  
 Claudia G. Harrelson  
 Mur Anne Lawson  
 Pearl G. Lee  
 Roy Ken Martin  
 Glen Earl Meade, Jr.  
 Benjamin R. Melvin  
 David M. Perry  
 Margaret Farrior Pope  
 Thomas A. Pope, Jr.  
 Sylvia Vessels Price  
 Charlotte Walker Rea  
 John McNair Rea  
 Laura Lambeth Stanley  
 Bonnie J. Strawder  
 Susan Ipoek Walker  
 Lea Anne Poteat Watson

**Class of '79**  
**18 Contributors**  
**10.9% Participation**  
**63.6% Increase**

William B. Crompton, III  
 William E. Cummings  
 Kathy Ditty  
 Frederick B. Egenberger  
 Michael S. Ellis  
 Alfred Van Fletcher, Jr.  
 Gregory Howard  
 Ruth W. Huggins  
 Kermit Lyle Lindgren  
 Jane A. Miller  
 Jeffery L. Norton  
 Ernest W. Parker  
 Andrew F. Pasternak  
 Melinda Perry  
 Robert L. Plotts  
 Charles Wayne Stewart  
 Steven Walker  
 Robert T. Wilson, Jr.

**Begins**  
**"Young Monarchs**  
**Club"**

**Class of '80**  
**25 Contributors**  
**11.8% Participation**  
**19.0% Increase**

Ruth G. Ambrose  
 Carol Willard Baldwin  
 Towanna O'Neal Bigford  
 Maria Lisa Bryant  
 Jeffrey P. Cavano  
 Dwight E. Cribb  
 Victoria S. Etheridge  
 Kathryn Erranton Faison  
 Thomas Tavner Fields  
 Brigitta Campbell Gregg  
 Earl Edward Hemminger  
 Donald Wayne Jones  
 Wanda Lee Jones  
 Bonnie Rexon Lindsley  
 Rickey Lindsley  
 Denise Ivette Lugo  
 Mary Linda McLaurin  
 James Earl McLendon  
 Mary Talley Spears  
 Ruby McDuffie Strouse  
 Stephen V.N. Vo  
 John Richard (Rick) Watson  
 Janice Wood  
 Dorothy Zeller  
 Timothy Zeller

**Class of '81**  
**23 Contributors**  
**11.9% Participation**  
**53.3% Increase**

Byron Beall  
 Mildred W. Blackwell  
 Andre Carson  
 Ralph Eugene (Chet) Chester  
 Robert J. Collins  
 Teresa Spencer Collins  
 Mary Sheldon Craft  
 Jerry W. Cribb  
 Harriett Gillis Faircloth  
 David E. Flowers  
 Peggy Boyce Goulet  
 Madeline R. Hairston  
 Susan Yost Jaeger  
 Ruby Wilson Johnson  
 Cheri DePritter McLean  
 Mark C. Mooney  
 William G. Morgan, Jr.  
 Linda Parrous  
 Sandra H. Quinn  
 John R. Shoemaker  
 Kyle L. Stephenson  
 Kathy Southerland Stewart  
 Joseph John Vasquez

**Class of '82**  
**24 Contributors**  
**14.2% Participation**  
**60.0% Increase**

Mary Paul McArthur Beall  
 Thomas L. Bosquet  
 Diane Beldon Cavano  
 Diane Croom  
 Lynda Faircloth Deaton  
 Lynda Womack Fisher  
 Robert J. Fliin  
 Phillip R. Glick  
 Patsy J. Gordon  
 Margaret C. Haigh  
 Robert Allen Heatwole  
 Tammy Hightower  
 Nancy J. Hollingsworth  
 Friedbert J. Humphrey

Patricia Marples  
 Vello Savi  
 Gay Davis Sexton  
 Denise Yarborough Sykes  
 Teresa W. Tanner  
 Sylvia A. Tartt  
 Patricia Anne Turner  
 Brenda L. Vasquez  
 Jean R. Young  
 Jacqueline Webb Zwan

**Class of '83**  
**23 Contributors**  
**14.7% Participation**  
**4.5% Increase**

Paula K. Bisby  
 Allen Lee Borgardts  
 Daisy Morales Borgardts  
 Arthur D. Brown, Jr.  
 Charlotte Coheley  
 Floyd David Cowart  
 Jeffrey Alan Davis  
 Linda K. Famuliner  
 Elizabeth Farnum  
 Douglas E. Fellows  
 Mark C. Kendrick  
 Diane B. Kerner  
 Gary McDonald  
 Terry A. Mitchell  
 Leasel S. Pawley  
 Jeff Riddle  
 Kenneth O. Spears, Jr.  
 Michael B. Szafranski  
 William M. Thomas  
 Linda J. Trudeau  
 E. Walter White, Jr.  
 Brian Wingo  
 Gilliam P. Wise

**Class of '84**  
**32 Contributors**  
**16.4% Participation**  
**All New Contributors**

Linda A. Archer  
 Robin Baxley  
 Bruce D. Bright  
 Timothy J. Clemo  
 Randy Egsegian  
 Cheryl Epperson  
 Barbara S. Garza  
 Harry Saenz Garza  
 Cynthia L. Hanlin  
 Lawrence L. Harrow  
 Cynthia Allen Horne  
 Robert L. Hostetter  
 William Morris Howard  
 Frances Hall Jackson  
 Kathryn Locey  
 Teri Hawley Maynard  
 Kevin J. McCoy  
 Joice E. McLaurin  
 Neil A. McNeill  
 Lois Ann Novak  
 Cynthia L. Peterson  
 Elmer S. Richards  
 Horace Edwin Riddle  
 Patricia Smith Schob  
 Paul T. Scibilia  
 Lori L. Simmons  
 G. Jerome Smith  
 Corinthea Stack (Rennie)  
 John L. Vereen  
 Cal Violette  
 Shirley Abbott Wilson  
 Norma Walters Wingo

**Classes of '85, '86, etc.**  
 Gisele E. Lassonde '85  
 Marsha S. McIntyre '86  
 Mark S. Powell '86

**Alumni Friends**  
 Miss Lois Lambie  
 Dr. and Mrs. Lorenzo Plyler  
 Dr. Wayne Prestlar

**In Memoriam**

Mrs. Lydia Lupton, mother of Howard J. Lupton '72, by Ray Gooch '72.  
 LTC Preston Ernest Blackwell, by his wife, Mildred W. Blackwell '81.

**Matching Gift**  
**Companies**

Over 1,000 companies throughout the United States currently offer a matching gift program for their employees. The Corporate Matching Gift Program is vital to private colleges today. We would like to take this opportunity to thank the companies who matched their employee's gifts during the 1984-85 fiscal year.

**29 companies**  
**31.8% increase**

- Abbott Laboratories
- American Brands, Inc.
- Barclays American Corporation
- Burlington Industries Foundation
- Carolina Power & Light Company
- Carolina Telephone & Telegraph Company
- Chase Manhattan Bank
- \*Chrysler Corporation Fund
- CIGNA Foundation
- The Consolidated Foods Foundation (L'eggs Products)
- \*Deloitte Haskins & Sells Foundation
- Deluxe Check Printers Foundation
- Goodyear Tire & Rubber Company (Kelly-Springfield)
- Hammermill Foundation
- Hartford Insurance Group
- \*Hospital Corporation of America
- Johnson-Sherman Company
- Kmart Corporation
- Loews Corporation
- Merrill Lynch & Company, Inc.
- Milliken & Company
- Nationwide Foundation
- \*Philip Morris, Inc. (Miller Brewing)
- The Prudential Foundation
- R.J. Reynolds Industries, Inc.
- Sea-Land Corporation
- State Farm Companies Foundation
- Time, Inc.
- Travelers Companies Foundation

\*in progress

**Did We Make**  
**A Mistake?**

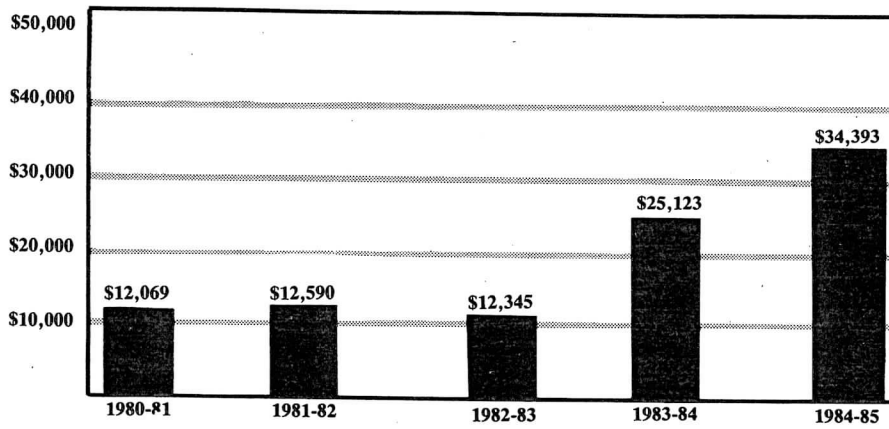
**DID WE MISS YOUR NAME?**  
**HERE'S WHY...**

- 1) WE MADE A MISTAKE!  
 We're sorry if this has happened. In processing, some errors do occur.
- 2) YOU DIDN'T MAKE YOUR GIFT DURING THE 1984-85 FISCAL YEAR! This is sometimes confusing. Our year runs from July 1 to June 30. Check to see if you made your gift during that period.
- 3) ARE YOU SURE YOU GAVE? With the many appeals from worthy causes that we all receive, it is easy to miss one.

Send all inquiries to the office of Alumni Affairs, Methodist College, Fayetteville, NC 28301, or phone (919) 488-7110, ext. 213.  
**WE WANT TO GET IT RIGHT!**

# MC ALUMNI LOYALTY FUND

## Alumni Contributions



## Class Honors

### Most Contributors

'69	57
'73	56
'70	52
'72	48
'71	47

### Greatest % of Participation

'64	40.9%
'67	30.0%
'66	27.8%
'68	26.7%
'73	24.4%

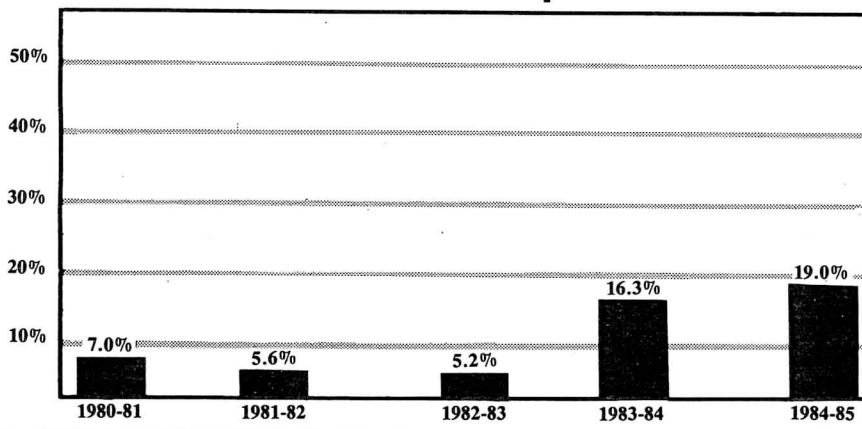
### Greatest % of Increase (in # of Contributors)

'78	100.0%
'79	63.6%
'82	60.0%
'81	53.3%
'77	50.0%

### Greatest Amount of Money

'64	\$5,345.50
'73	2,972.50
'71	2,747.50
'65	2,352.50
'70	2,177.50

## Alumni Participation



DOLLARS

PARTICIPATION

MCAA  
End-Of-Year  
Loyalty Fund  
Report  
June 30, 1985

Class	Alumni of Record	Number of Contributors	This Time Last Year	Increase In Contributors	Amount Contributed	This Time Last Year	% Of Participation	This Time Last Year
'64	61	25	23	8.0%	\$5,345.50	\$3,185.67	40.9%	37.7%
'65	95	18	13	38.5%	2,352.50	1,807.50	18.9%	15.2%
'66	104	29	21	38.1%	1,590.00	1,125.75	27.8%	19.6%
'67	113	34	24	41.7%	1,422.50	912.50	30.0%	22.6%
'68	168	45	45	-0-	1,707.40	1,772.50	26.7%	25.7%
'69	267	57	58	-0-	1,978.50	1,960.00	21.3%	20.5%
'70	246	52	52	-0-	2,177.50	1,682.00	21.1%	22.1%
'71	267	47	47	-0-	2,747.50	1,225.00	17.6%	17.0%
'72	235	48	46	4.3%	1,995.00	2,025.00	20.4%	18.7%
'73	229	56	40	40.0%	2,972.50	1,547.50	24.4%	17.0%
'74	225	43	35	22.8%	1,437.50	962.50	19.1%	15.1%
'75	174	32	29	10.3%	1,367.50	2,665.21	18.3%	15.6%
'76	138	11	13	-0-	245.50	427.50	7.9%	8.9%
'77	153	24	16	50.0%	1,013.00	770.00	15.6%	13.7%
'78	130	30	15	100.0%	650.00	540.00	23.0%	11.8%
'79	164	18	11	63.6%	402.50	210.00	10.9%	9.7%
'80	211	25	21	19.0%	477.50	529.00	11.8%	10.2%
'81	193	23	15	53.3%	1,240.00	670.00	11.9%	7.3%
'82	168	24	15	60.0%	552.50	355.00	14.2%	8.5%
'83	156	23	22	4.5%	1,052.50	670.00	14.7%	15.3%
'84	194	32	1	All new contributors	715.00	25.00	16.4%	
'85, '86 etc.		4	2		56.00	55.00		
TOTAL	3,691	700 3 Alumni 703	564	24.1% increase	\$33,498.40 + 225.00 \$33,723.40	\$25,122.63	19.0%	16.3%

(Includes: \$3,302.50 for '84-85 Matching Gifts and \$6,110.00 given by Alumni Through MC Foundation)

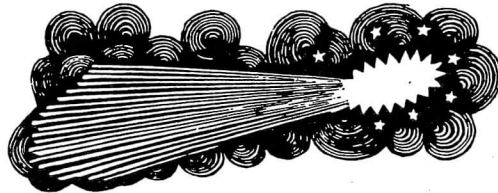
+ 670.00 (Funds received as '83-'84 Matching Gifts)

Grand Total

\$34,393.40



# Comet Halley Celebrated At Methodist College



### FOR THE CURIOUS - CONVOICATIONS

"BC 239 - (76 x 27) = 1986 AD"  
-Oral Interpretation, 10A, 12/2  
"Spacemobile" Reeves, 10A, 2/21  
"Those Who Saw" Panel, Reeves,  
10A, 2/24

### FOR RENEWAL CREDIT

"Comet Halley and the Solar System" Mondays, 7:30-9:30, Sept. 23-Nov. 11, 2 Credits  
"Halley Going Into the Sun", various times and days from 10/11-11/13, 1 Credit  
"Comet Halley and the Solar System," Mondays, 7:30-9:30, Feb. 10-Mar. 31, 2 Credits  
Halley Going Out of the Sun," various times and days from 2/21-4/6, 1 Credit

### FOR CITIZENS

Fine Arts Week has been proclaimed by Mayor Hurlley for February 20-28. An All-American City celebrates the arts and explores the Comet Halley.  
Soup Supper & Halley Viewing -MC Dining Hall, \$5, 6P, 10/13 & 10/14  
Sternschnuppen Schmaus Reception, Reeves 10P, 2/20  
Spacial Reception, Library, 4:30, 2/23  
Barbecue Breakfast & Halley Viewing, MC Dining Hall, \$5.00 3 AM, April 5 & 6

### FOR ENLIGHTENMENT

"Comet Halley and the Solar System", Mondays, 7:30-9:30, First series - Sept. 23-Nov. 11, Repeat series - Feb. 10-Mar. 31.  
Galelio Film Fest, Material Center, 2:00, 1/26

### FOR THE CURIOUS - LYCEUMS

Mark Twain on Tour with Ken Richter, \$3, \$1, Science Aud., 8P, 2/23  
Historical Perspective by Ruth Freitag, Library of Congress, Science Aud., 8P, 2/24  
Scientific Perspective by Dr. Stephen Maran, NASA, Science Aud., 8P, 2/25  
Halley's Comet by Johnny Horne, Fayetteville Observer/Times, Science Aud., 8P, 2/26  
Looking to 2061 with President Hendricks and Dean Sadler, Science Aud., 8P, 2/27

then tour recreation centers, \$1.00  
Creative writings, drawings and cartoons published

### FOR SENIOR CITIZENS

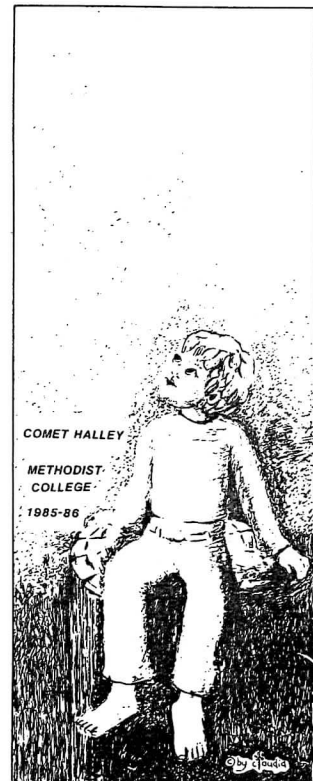
"Those Who Saw in 1910" Portrait Exhibit, Reeves, 2/20-28  
"Those Who Saw in 1910" Living History Tapes deposited in Library 2/20  
"Those Who Saw Panel Discussion," Reeves, 10:00, 2/24  
Adopt a Grandchild Lunch, MC Dining Hall, 11:30, 2/24  
"Living History Lives" Production, Reeves, 1:00, 2/24

### FOR SKY WATCHERS

Astronomy Viewings with Bob Palmer, Methodist College, various times: June 28 & 29, July 26 & 27, August 23 & 24, September 20 & 21, October 25 & 26, November 13 & 14, December 6 & 7, December 13 & 14, January 3 & 4, January 10 & 11, April 5 & 6  
Morehead Planetarium Halley Comet Showing, Bus & planetarium fee \$6, Reservations required, leave MC at 1:00, 10/13  
FSU Planetarium "Once In a Lifetime" Showing, \$2.00, 2P, 11/3  
NASA Spacemobile at Methodist, 2/21 & 22

### FOR THE YOUNG

"How to see Comet Halley in 1985 & 2061" -program for the young who may see it twice -\$1.00, Science Auditorium 10A, 1P, 3P, September 28th  
Operation Balloonik - sending balloons into space, Parks and Recreation, 11A, 10/13  
Space Mobile, Reeves, 2/20-21  
Space Cartoons - life size and living, 2/20-22  
Art in Space Exhibit, Grannis Airport, 2/22-28  
Space Ships Built at Recreation Centers, 2/22  
Space Colony in Student Union, 2/22  
Films by youngsters on space, hourly 10-1, Materials Center, 2/22  
Music Composition Winners played at 2, Band Room, 2/22  
Music Recital of young, 2:00, Band Room, 2/22  
The Revenge of the Space Panda Science Auditorium, 4P, 2/22 and



COMET HALLEY

METHODIST COLLEGE  
1985-86

By [signature]

### Class of '64

**Robert C. Brunel** is the father of 3 children: Kimberly, age 18 (currently attending James Madison University), Robbie, age 16 and Kristin, age 15. Bob is Vice President of McCane Construction Utility Contractor. Friends may write to him at 9509 Bonnie Dale Road, Richmond, VA 23229.

### Class of '65

**Commander George Council**, United States Navy, works in Washington, DC for the Deputy Chief of Naval Operations for Manpower. He and his wife, Pat, are parents of 12-year-old twin boys. Friends may write the Councils at 13497 Keystone Road, Woodbridge, VA 22193.

**Loche McLean** is married to Sally Richter of Annapolis, Maryland. He is assistant to the Director of the Pentagon Library. Friends may write to Loche at 5700 Shropshire Court, Alexandria, VA 22310.

**Walter R. Turner** has had articles to appear recently in the NORTH CAROLINA CHRISTIAN ADVOCATE and CAPE FEAR TIDEWATER magazines as well as in arts and social work publications. Friends may write to Walter at 430 Semmes Drive, Wilmington, NC 28403.

### Class of '66

**Murray O. Duggins** moved to Wilmington, NC in June, 1984. He is the founder and president of United Resorts, a marketing and development company specializing in resort development in North and South Carolina. United Resorts is located in Carolina Beach, NC. Friends may write Murray at P.O. Box 1750, Carolina Beach, NC 28428.

### Class of '67

**Maryellen Swindler Church** is presently employed as an elementary media co-ordinator for 6 schools in Mt. Healthy, Ohio. She received her Masters from Miami University (Oxford, Ohio) in 1979. Her daughter, Kristen Beth is 16 and is entering her junior year in high school. Friends may write Maryellen at 10432 Gloria Avenue, Cincinnati, OH 45231.

**Nancy (Caughy) LeVine** and her husband Larry have three children, Chris, age 14, Caren, age 11, and Joe, age 5. Larry works in New York City as Executive Sales Manager for Regensteiner Press, a publishing/printing firm. Larry and Nancy are both actively involved in scouting, Babe Ruth Baseball, girls' softball, camping, fishing and spending part of their summers on an island in Canada away from electricity, plumbing and the outside world. Friends may write Nancy at 60 South Little Tor Road, New City, NY 10956.

**Leslie J. Mengel** works for Florida Fisheries Research Station (USFWS), estimating the standing stock of finfish in the coastal waters of Everglades National

Park. He lives with his wife Beverly and their two-year-old daughter, Malissa. Friends may write him at 1721 NW 13th Avenue, Homestead, FL 33030.

### Class of '68

**Julia P. James** was the 1984-85 nominee for the Phoebe Apperson Hearst Award as Educator of the Year. This is a national PTA-sponsored award. Friends may write to Julia at 138-C Treetop Drive, Fayetteville, NC 28301.

### Class of '69

**William W. Blalock, Jr.** is the National Credit Manager for Frito-Lay, Inc. in Dallas, Texas. He is also President and Chairman of the Board for W.W. Blalock & Company in Dallas, Texas. Friends may write to Bill at 3625 Teakwood Lane, Plano, TX 75075.

**Regina Keeter Hall** is teaching first grade in Havelock, NC. She and her husband Jim have three children, Shelton, age 13, Ann, age 9, and Lindsay, age 3. She received her Masters of Education from East Carolina University. Friends may write Regina at 3619 Meadow Drive, Morehead City, NC 28557.

**Zula McPhaul High** and her husband, Jack, have two children, Jaclyn Paige, age 8, and Ted, age 5. While staying home with her children, Zula is a bookkeeper for a local clothing store and also runs a pre-school. Friends may write her at 2067 Marquesas Avenue, Tega Cay, SC 29715.

After 15 years with Broyhill Furniture Industries, **Kenneth E. Solesby** now represents Dixie, Link-Taylor, Young, Hinkle, and Henry Link Companies. He is still a furniture manufacturer's representative in Tennessee. Friends may write Ken at 6013 Jocelyn Hollow Road, Nashville, TN 37205.

**Martha (Eve) Mullen West** received her Masters Degree (English concentration) in 1983 from East Carolina University. Friends may write her at Route 7, Box 524, Greenville, NC 27834.

### Class of '70

**Carolyn Garrison Kneas** is currently a teacher at McConnellsbury Elementary School. Her husband Harvey works in Anchorage, Alaska with MILA SERVICES on a rotation basis. They have 3 children, Kristi Anne, age 12, Kimberly Elizabeth, age 8, and Kenneth Garrison, age 5. Friends may write to Carolyn at P.O. Box 152, McConnellsbury, PA 17233.

**Thomas F. Miriello** was promoted July 1, 1985 to State Director of Alcohol and Drug Services in the Division of Mental Health. Friends may write Tom at 650 Pine Ridge Road, Raleigh, NC 27609.

**Gayle Etheridge Simons** and her husband have two children - Brian, age 9, and Becky, age 6. Gayle is

currently working for the Virginia Beach Department of Social Services where she is a social work supervisor in the Foster Care Intake Unit. Friends may write to Gayle at 4104 South Plaza Trail, Virginia Beach, VA 23452.

### Class of '71

**Ambrose and Debbie (Pender) Hill** have three children - Aaron, age 10, Ashley, age 8, and Allyson, age 5. Ambrose is Regional Sales Manager for Roche Biomedical Lab and is being transferred from Burlington to Fayetteville. Debbie has served as assistant principal at Elon College Elementary in Alamance County for the past 2 years. Friends may write the Hills at 5813 Danville Drive, Fayetteville, NC 28301.

**Alan Holden** is the father of one son, Shane, age 12. He owns Alan Holden Realty, Holden Beach, NC. Friends may write Alan at 128 Ocean Blvd. West, Holden Beach, NC 28462.

### Class of '72

**Rainelle Dixon Tinsley** is a partner in a new furniture and design store at Topsail Beach named Interior Collections. She also has The Finishing Touch at Carolina Beach (also a furniture and design store). Friends may write Rainelle at Box 1369, Carolina Beach, NC 28428.

### Class of '73

**Jennifer Barnes Fann** is employed with the Sampson County Schools. She and her husband, Farrell, have 2 children, Jenny, age 10, and Jeffrey, age 7. Their address is Route 1, Box 299-B, Salemburg, NC 28385.

### Class of '74

**Barry A. Box** has been working for Prudential-Bache for almost three years. His wife, Anita, teaches the fourth grade. They have two daughters, Jennifer, age 12, and Jodi, age 9. Friends may write to them at RD No. 1, Box 396E, Greentown, PA 18426.

**Roger H. Brown** has completed Allstate Insurance Company's two-week sales course at the Allstate Field Training Center in Atlanta, GA. He was employed with the Onslow County Public Schools the past nine years and was assistant principal at Southwest High School. Roger will be working out of the Allstate neighborhood sales office in Jacksonville, NC. He will also represent Allstate Finance.

**Mary Hansen Cella** was promoted to Assistant Treasurer at Chase Manhattan Bank in March, 1985. She received her Master of Science in Management in May, 1985 from Wilmington College in Delaware. Friends may write to Mary at William Penn Village 5-21 Tulip Lane, New Castle, DE 19720.

**Brent A. Matthews** has three children - Kelly, age 12, Brett, age 6, and Adam, age 3. He is currently employed by Diversified Forms, Inc. Yadkinville, NC as president. Friends may write Brent at Route 1, Box 453-A, East Bend, NC 27018.

**Randy Wall** has recently been appointed the pastor of the Franklinton United Methodist Charge. He is married to the former **Donna Blalock '75** of Durham who is a school teacher. They have two daughters, Heather, age 7, and Ginger, age 2. Friends may write to them at 302 North Hillsboro Street, Franklinton, NC 27525.

### Class of '75

**Evelyn B. Bonner** recently started a new job as an art instructor at Cape Fear High School in Fayetteville. Evelyn is also an art instructor at the Governor's School of North Carolina - East, St. Andrews Presbyterian College. Her new address is P.O. Drawer A, Parkton, NC 28371.

**Polly Ann Bridge** received her Masters Degree in Education from East Carolina in 1981. She is currently teaching a reading lab at Northwoods Elementary in Jacksonville, NC. Friends may write her at 1112 Clifton Road, Jacksonville, NC 28540.

**Wanda Moorefield Jones** is a middle-grade teacher in Stokes County Francisco Elementary School. This year she taught 5th grade. She and another teacher organized a Saturday field trip to New York for the 5th and 6th grade classes. They carried 22 students and 65 parents and friends for an all-day tour of New York City. Friends may write her at Route 1, Box 403A, Pilot Mountain, NC 27041.

**William F. Thomas** will be in Germany until August, 1986. He was promoted to lieutenant colonel in May, 1985. His son **Kelly J. Thomas '81** was promoted to captain in November 1984. Kelly is currently stationed at Fort Rucker, Alabama. Another son, **Thomas**, is an Admissions Counselor at Methodist College.

### Class of '76

**Sue Duffitt Richards** has just written her first book which has been accepted for publication next year. The book, DIVORCE MINISTRY, is written for pastors and lay leaders giving them a practical guide to understanding and meeting the needs of the divorced. It also explains how to set up a divorce ministry program where the need exists. Friends may write to Sue at 13209 Sumpter Cr., Hudson, FL 33567.

### Class of '77

**Gail Ward Ellis** works for Loving Heart Nursing Service in Birm-

ingham, AL. She also does private duty work. Friends may write to Gail at 124 Holiday Village, Leeds, AL 35094.

**Walter and Sylvia (Landis) Kennedy '75** have two daughters - Kara, age 4½, and Ashley, age 3. Walter manages the Radio Shack Computer Center in Raleigh and Sylvia is a homemaker. Friends may write to them at 5917 Brushwood Court, Raleigh, NC 27612.

### Class of '78

**Sherrie Horne Culbreth** has received a Master of Education degree from Campbell University. She is now teaching at Eastover-Central School in Cumberland County. Friends may write to Sherrie and her husband, **Scott '78** at Route 16, Box 142, Fayetteville, NC 28301.

**David M. Perry** was promoted to District Manager in February, 1985 for Monroe Systems for Business. His office was also recognized for being No. 1 in sales in its class for October, 1984 and January, 1985. Friends may write to David at 2000 Fenwood Drive, Knoxville, TN 37918.

**Sylvia Vessels Price** is the mother of two sons, William Dwight Price, III born July 29, 1982, and Charles Robert Price, born March 20, 1985. Friends may write to her at 2819 Castlebrook Road, Monroe, NC 28110.

**Alan Swartz** has been appointed as the new pastor of LaGrange United Methodist Church. He is leaving St. Paul United Methodist Church in Goldsboro, where he was associate pastor for 18 months. He and his wife, JoAnne, have one son, John Mark, age four. Friends may write Alan at 206 Lake Pines Drive, LaGrange, NC 28551.

### Class of '79

**The Rev. William E. Cummings** has been moved from Wilson Temple United Methodist Church in Raleigh and appointed to Rhine Memorial U.M.C. in Red Springs, NC. He and his family are very pleased with the move and are "meeting the challenge with excitement." Friends may write Bill at 5498 Richwood Court, Fayetteville, NC 28304.

### Class of '80

**Thomas T. Fields** is now working as building inspector for the Village of Pinehurst, NC. His son, Kevin Joy Fields, is a sophomore at Methodist College studying computer science. Friends may write Tom at 479 Albemarle Drive, Fayetteville, NC 28301.

**Earl E. Hemminger** received his Masters Degree in Management Science from American Technological University at Killeen, Texas in 1984. Earl was also promoted to captain in the U.S. Army and is currently stationed at Fort Rucker, Alabama and attending the Aviation Officer

Advance Course. In October he will be going to Fort Belvoir, VA.

### Class of '81

**Byron Beall** has been elected to serve on the New Hanover County Museum Board. Friends may write Byron and his wife **Mary Paul (McArthur) '82** at 2462 Confederate Drive, Wilmington, NC 28403.

### Class of '82

**Patsy J. Gordon** received her Master of Education in guidance and counseling from Campbell University in May, 1985. Friends may write to her at 5118 Rodwell Road, Fayetteville, NC 28301.

### Class of '83

1st. Lt. **Eric D. Bell** has been decorated with the Army Achievement Medal at Fort Bragg, NC. This medal is awarded to soldiers for meritorious service, acts of courage, or other accomplishments. Eric is a safety team commander with the 1st Special Operations Command.

**Doug Fellows** has been re-elected to a second term as president of the Fayetteville Technical Institute Alumni Association. He became the group's first president with its establishment in 1984. He is a current member of the Methodist College Alumni Association Board of Directors. Friends may write to Doug at 1006 Andrews Road, Fayetteville, NC 28301.

**Gary McDonald** is presently working for Roses in Rockingham, NC. He was chosen associate of the month for May. He will be attending Pembroke State University in the fall to pursue a teaching certificate in art. Friends may write to Gary at 217C Robinson Street, Rockingham, NC 28379.

**Michael B. Szafranski** was promoted to CW2 in September, 1984. He is currently serving as a detachment executive officer in the US Army 7th Special Forces group at Fort Bragg, NC. Friends may write Michael at 4723 Belford Road, Fayetteville, NC 28304.

**Robert P. Walker** has been commissioned a second lieutenant in the U.S. Air Force upon graduation from officer training school at Lackland Air Force Base, Texas. The 12-week course trained selected college graduates to apply communicative skills, professional knowledge, leadership and management in positions of responsibility. He will now be assigned to Mather Air Force Base, California.

### Class of '84

**Thomas J. Fetty** has been decorated with the third award of the Army Commendation Medal at Fort Bragg, NC. This medal is awarded to those individuals who demonstrate outstanding achievement or meritorious service in the performance of their duties on behalf of the Army.

**Lawrence L. Harrow** is an ac-

countant for Don-Ron Company of Erwin, NC. Don-Ron Company is a brokerage firm doing business with military commissaries and exchanges east of the Mississippi River and in Europe. Friends may write Lawrence at 6527 Bonnie Bell Lane, Fayetteville, NC 28304.

**John L. Vereen** has been recruited through Methodist College for the Career Safety Intern Program Department of the Army. Friends may write to John at 735 Ashburton Drive, Fayetteville, NC 28301.

### MARRIAGES

**George Thomas Holland '80** and **Martha Ward Woodhouse** were married May 18, 1985. Tom served four years in the U.S. Navy and will enroll in medical school at the University of North Carolina this fall.

**Ralph Eugene (Chet) Chester, Jr. '81** married **Wanda Quick** on January 16, 1983. Chet is the owner/manager of Golden Corral Steak House. Friends may write him at 311 Watson Circle, Hartsville, SC 29550.

**Cindy DiDolci '81** announces her marriage to **James A. Stockdale**. Cindy is a Physical Education teacher at Walter T. Bergen Middle School in Bloomington, NJ. Jim is a graduate of St. John's University and is the Director of the Employee Pharmacy at Jacobi Hospital in Bronx, NJ. Friends may write to the Stockdales at 24 Agawam Drive, Wayne, NJ 07470.

**Diane Croom '82** and **Gary Thorne** were married on August 3, 1985. Gary will be attending Life Chiropractic College in Marietta, Georgia where the couple will live.

### "MINI MONARCHS"

**Jerry L. Smith '68** and his wife, **Kay**, announce the birth of an 8-pound, 3-ounce baby girl, **Meredith Grace**, born April 7, 1985.

**Stephen A. Magnotta '72** announces the birth of a son, **Matthew Roux**, born October 2, 1984.

**JoAnna Walker Brown '73** and her husband, **Ronnie**, announce

the birth of a daughter, **Anna Frances**, born June 6, 1985. Their first child, **Kelly Jo**, is now 3 1/2 years old. Friends may write to JoAnna at Route 2, Box 431-C, Durham, NC 27705.

**Kenneth '73 and Virginia (Moore) Williams '77** announce the birth of a son, **Phillip Andrew Williams**, born October 12, 1984. Friends may write them at 8336 Tifton Road, Pineville, NC 28134.

**Keith '77 and Sheree (Kintner) Baumgardner '77** announce the birth of their first child, **Amanda Lee**, born April 21, 1985. Friends may write to the Baumgardners at 5627 Shenandoah Drive, Fayetteville, NC 28304.

**Randy C. Blanchard '78** announces the birth of a daughter, **Kristin Marie**, born February 19, 1985. Friends may write the Blanchards at P.O. Box 520, Bell Arthur, NC 27811.

**Joseph McAbee '79** and his wife, **Susan**, announce the birth of a daughter, **Laura Jo**, born February 12, 1985. Their oldest child, **Rachel**, is now three years old. Friends may write the McAbees at 3114 Pleasant Avenue, Hamilton, OH 45015.

**Mark Mooney '81** announces the birth of a son, **Christopher Carroll Mooney**, born May 10, 1985, weighing 8 pounds and 10 ounces.

**Joseph '81 and Brenda Vasquez '82** announce the birth of their first son, **Brandon Joseph**, born December 20, 1984. He is welcomed in the home by a brother, **Jon**, age 11. Friends may write them at 717 South Main Street, Hope Mills, NC 28348.

**Jaci Webb Zwan '82** announces the birth of a daughter, **Tyler Kent**, born September 23, 1983. Friends may write Jaci at 2322 Rollinghill Road, Fayetteville, NC 28304.

### DEATH

**James D. Sutch '83** died in a one-car accident near his home in Weatherly, PA on May 27, 1985. Prior to his death he was employed as a field representative for Berkheimer Associates in Wilkes-Barre, PA.

## Methodist College Alumni Association Officers & Board of Directors 1985-86

**Howard J. Lupton '72**, President  
**Betty Neill Parsons '64**, Vice President  
**Kathy E. Woltz '73**, Secretary

### Board of Directors:

**Malvern S. Barrow, III '68**     **Jerry Huckabee '66**  
**Coleen S. Doucette '74**     **Mark C. Kendrick '83**  
**William P. Estes '69**     **Regina McLaurin '70**  
**Faith E. Finch '75**     **Cynthia A. Walker '65**  
**Douglas Fellows '83**     **Susan Ipock Walker '78**  
**John Handy '66**



# KEEP IN TOUCH WITH YOUR COLLEGE!

Send your news to Lynn Gruber, Methodist College, Fayetteville, N.C. 28301

My address is incorrect. Please change to: \_\_\_\_\_  
\_\_\_\_\_  
\_\_\_\_\_

I am moving. Please change my address to: \_\_\_\_\_  
\_\_\_\_\_  
\_\_\_\_\_

Effective date: \_\_\_\_\_  
\_\_\_\_\_

*The Bulletin of Methodist College/Methodist College Today* is prepared as a service to all members of the Methodist College community and all Methodist College alumni, published six times a year (February, May, July, August, September and November) by the Publications Department of Methodist College, Fayetteville, N.C. 28301. (Entered as second class matter at the Post Office, Fayetteville, N.C., under the Act of August, 24, 1912).

*Director of Publications and Public Information, Al Robinson  
Director of Alumni Affairs, Lynn Gruber*



Methodist College does not discriminate on the basis of sex, national or ethnic origin or religious denomination in the administration of its educational policies, scholarships and loan programs, athletics and all other college administered programs.

METHODIST COLLEGE **TODAY**

5400 RAMSEY STREET  
FAYETTEVILLE, NC 28301  
(USPS 074-560)

Second Class  
Postage Paid  
at Fayetteville, NC  
28301



**Methodist  
College**