

INTERESTED IN TRANSFERRING to a small college with a modern campus and a friendly community atmosphere?

Methodist College welcomes Transfer Students!

ACADEMIC RECOGNITION

Methodist College is accredited by the Southern Association of Colleges and Schools. It is also a member of the North Carolina Association of Colleges and Universities, the American Council on Education and the Association of American Colleges.

Methodist College is approved by the North Carolina Department of Public Instruction and State Board of Education for the in-service preparation of public school teachers and the University Senate of the United Methodist General Board of Education for the undergraduate training of ministers and Christian education workers.

AIM AND PURPOSE

Methodist College is a community where individuals respect and care about each other. Everyone is offered the opportunity to establish his identity through cooperation, service and leadership. At Methodist College meaningful college experiences may strengthen personalities which provide lasting contributions to society.

Methodist College undertakes to fulfill its purpose through a dedication to two fundamental ideals: academic excellence and the Christian concept of life.

PROGRAMS AVAILABLE AT METHODIST COLLEGE

Art
Biology
Chemistry
Economics and Business Administration
Elementary Teacher Education
English
French
History
Mathematics
Music
Religion
Sociology
Spanish
Political Science
Pre-Dentistry
Pre-Law
Pre-Medicine
Pre-Theology

Through its Teacher Education program, the college prepares secondary school teachers of English, French, mathematics, science, social studies and general music.

A "3-2" program in engineering is available in cooperation with North Carolina State University and the University of Southern California at Los Angeles.

ELIGIBILITY FOR TRANSFER

Eligibility for transfer to Methodist College is based upon one's cumulative grade point average at the end of a given academic year on the 4.00 system. A student is eligible to be considered for admission provided he has a minimum cumulative grade-point average of 1.25 at the end of the spring semester of the first academic year*; 1.50 at the end of the second academic year; and 1.75 at the end of the third academic year.

The maximum number of hours transferable from a junior college is 60 semester hours or 102 quarter hours.

Methodist College offers many opportunities, without discrimination, to all qualified transfer students interested in a comparatively small, liberal arts and pre-professional college which has a close relationship between students and faculty.

*College attendance in the first and/or the second semester will constitute an academic year.

GENERAL REQUIREMENTS

All students must complete specified courses from the following areas as requirements for the general college curriculum*:

English	12 hours
Religion	6 hours
Philosophy	3 hours
Psychology	3 hours
Science	8 hours
Mathematics	6 hours
History	6 hours
Art or Music	3 hours
French, German or Spanish (Above elementary level)	6 hours

Six hours from two of the following:

Economics, Political Science, Geography, Sociology	6 hours
---	---------

*Specific titles of courses required for graduation may be found in the Methodist College Catalog.

PROCEDURE FOR ADMISSION

To apply for admission to Methodist College:

1. Obtain, complete and submit an application form to Methodist College.
2. After obtaining our secondary school record form, send it to your high school principal or guidance counselor and request him to complete and return the form to Methodist College.
3. Ask your Registrar to send us a transcript of all college work attempted. (Acceptance is determined by your present record, contingent upon successful completion of the work you are now attempting.)
4. Submit a medical questionnaire. (This may be done after you are accepted.)

ANNUAL EXPENSES 1971-72

	1st semester	2nd semester	Year
Tuition -----	\$450	\$450	\$900
General fee -----	120	120	240
Health-Activity fee	30	30	60
Room -----	200	200	400
Board -----	300	300	600

This does not include books and other personal expenses and fees. Refer to catalog for further details.

FINANCIAL AID

Refer to catalog and/or brochure for information on loans, scholarships, campus work, and grants-in-aid.

APPLICATION FOR ADMISSION

An application for admission must be accompanied by a fee of \$10.00. This amount is not refundable.

For application, forms and catalog, write:

ADMISSIONS OFFICE
 METHODIST COLLEGE
 FAYETTEVILLE, N. C. 28301



SECOND CLASS POSTAGE PAID
 FAYETTEVILLE, N. C. 28301

Bulletin of

METHODIST COLLEGE

Fayetteville, North Carolina 28301

Vol. 12, No. 1 February, 1971



PUBLISHED SEMI-QUARTERLY

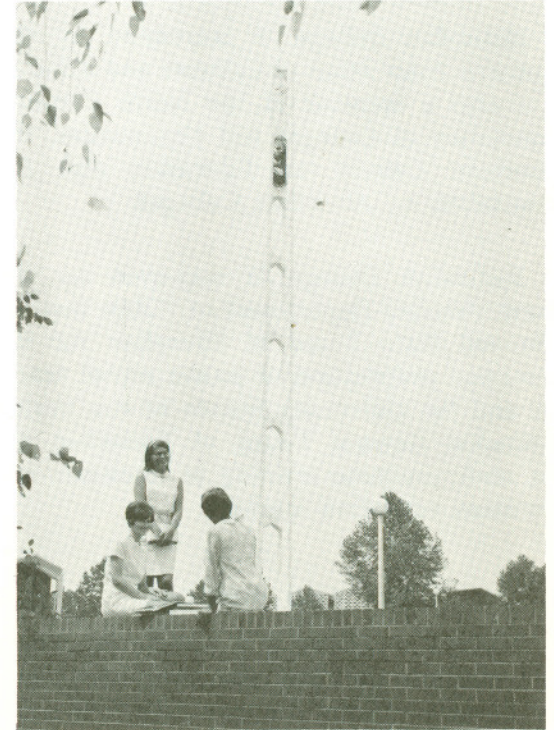
by

DEPARTMENT OF PUBLIC RELATIONS

TRANSFER STUDENT INFORMATION

Methodist College

FAYETTEVILLE, NORTH CAROLINA
 28301



*Transfer Student
 Information*