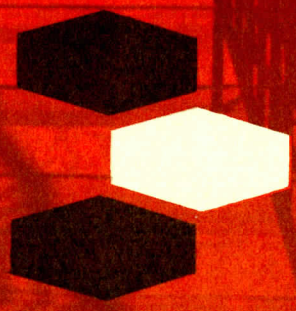
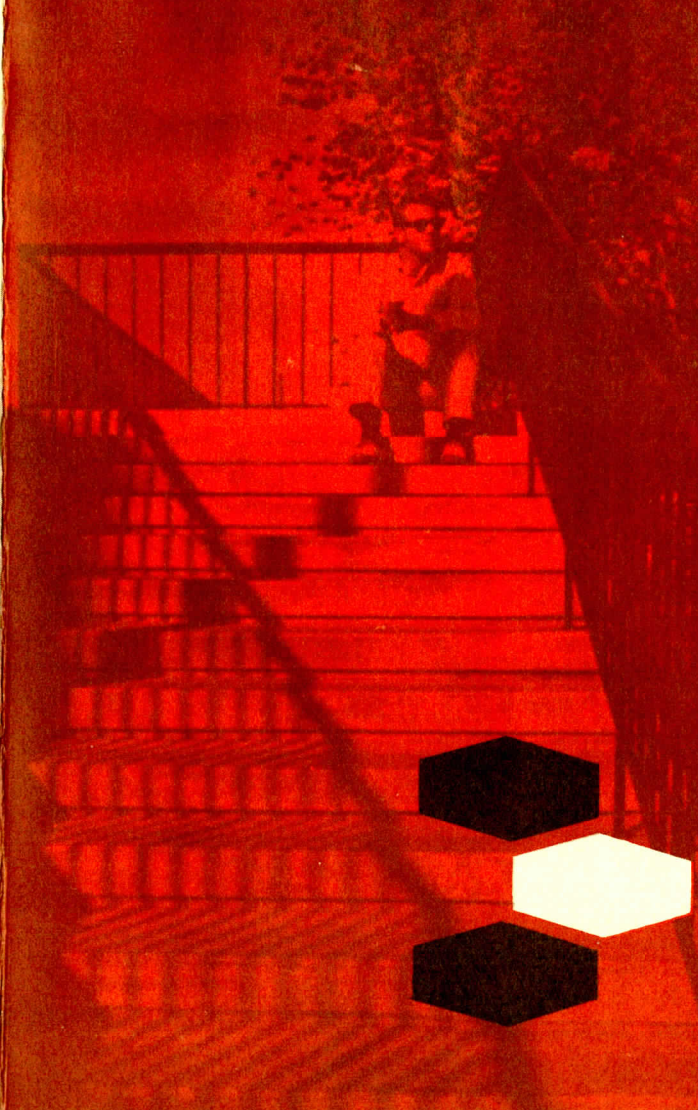


Your Educational
Experience at . . .



**METHODIST
COLLEGE**

FAYETTEVILLE
NORTH CAROLINA

BULLETIN OF

Methodist College

Fayetteville, North Carolina

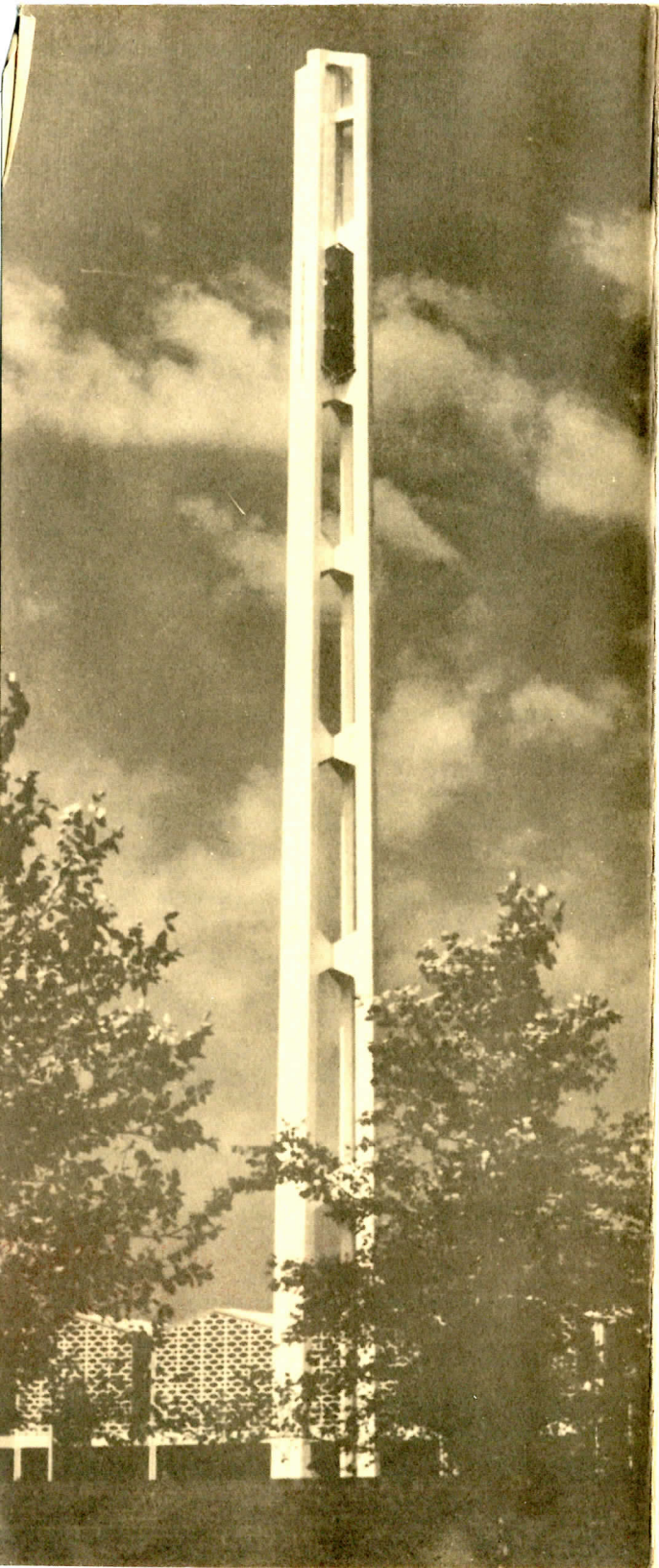
Vol. 10, No. 5 August, 1969



Published Semi-Quarterly
By
Department of Public Relations

Second Class Postage Paid
FAYETTEVILLE, N. C. 28301

LIBERAL ARTS ⊕ COEDUCATIONAL ⊕ SENIOR COLLEGE





Experience The Stimulating Atmosphere On A Contemporary Campus

With full realization of the part which attractive and functional facilities contribute to the learning experience, Methodist College has pressed forward with the construction and completion of 18 of the structures projected for the campus.

Completion of the chapel in September 1969 leaves only the permanent gymnasium, maintenance and repair building, and the president's home to be built.

All campus buildings follow the lines of contemporary architecture, selected to give the campus unity and provide a stimulating and challenging atmosphere.

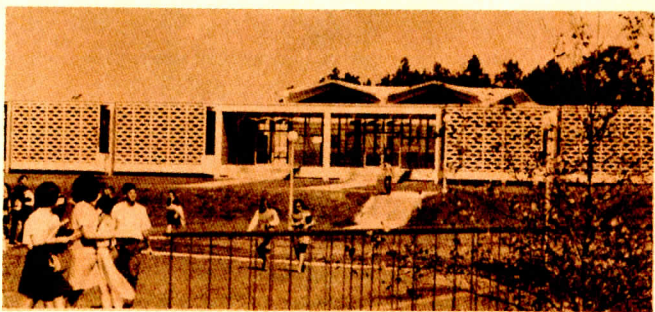
LOCATION

Methodist College is located five and one-half miles north of Fayetteville (population 53,000) in the Cape Fear Valley of North Carolina on a six-hundred acre site between U.S. Highway 401 and the Cape Fear River.

Methodist College is located five and one-half miles north of Fayetteville (population 53,000) in the Cape Fear Valley of North Carolina on a six-hundred acre site between U.S. Highway 401 and the Cape Fear River.



A meaningful program of extra-curricular activities provides additional opportunities for personal growth and development during your educational experience. Among these activities is the Concert-Lecture Series presenting world-renowned soloists, orchestras, ballet companies and Danforth lecturers.



Top, Student Union-Cafeteria;
Bottom, Science Building

A Christian Perspective Pervades Your Educational Experience

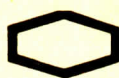


An extensive and well-balanced program of religious activities ministers to the moral and spiritual development of the campus community. The chaplain of the college serves as director of religious life and coordinator of extra-curricular religious activities.

All members of the student body, faculty, and staff may belong to the Christian Fellowship. This group takes the name, "Koinonia," a New Testament word meaning fellowship, communion, participation. A Steering Committee works with the Chaplain and other advisors to plan for religious life activities on campus. Denominational groups may function also if they wish.

During the academic week the student body and faculty convene for thirty-minute assemblies, at which attendance is required. Guest speakers at assemblies include ministers from the Fayetteville and eastern Carolina area representing the various religious denominations with which the students are affiliated.

Outstanding church lay leaders or officials are also invited to appear. The president of the college, the chaplain and other members of the faculty are regularly scheduled as assembly speakers. Students receive encouragement to attend Sunday morning worship services at community churches of their own denomination. Interdenominational Sunday services are held in the Chapel when the Steering Committee finds them justified by student interest. The annual observance of Religious Emphasis Week highlights the college year. Outstanding religious leaders come to campus as speakers and counselors for several days of highly concentrated activity planned jointly by the chaplain and the Steering Committee. The Committee plans numerous other programs such as a monthly Coffeehouse, which provides both entertainment and an opportunity to discuss religious issues.



Your Educational Experience Emphasizes Intellectual Development

Methodist College seeks to lead its students to intellectual maturity through a liberal arts program which emphasizes the humanities and basic sciences.

More than 200 courses are offered in seven areas of study. (1) English Language and Literature, (2) Religion and Philosophy, (3) Education and Psychology, (4) Science and Mathematics, (5) Social Science, (6) Fine Arts, (7) Foreign Languages.

Majors include: Biology, Chemistry, Economics and Business Administration, Elementary Education, English, French, History, Mathematics, Music, Religion, Sociology, Spanish, and Political Science.

Minors include: Art, Biology, Chemistry, Economics, English, French, History, Mathematics, Music, Philosophy, Physics, Political Science, Psychology, Religion, Secondary Education, Sociology, and Spanish.

Through its Teacher Education Program, the college prepares secondary school teachers of English, French, Mathematics, Science, Social Studies, and special teacher of General Music.

A "3-2" program in Engineering is available in co-operation with North Carolina State University and the University of Southern California at Los Angeles.

No academic program, however, can be any stronger than the faculty which brings it to life. The strength of Methodist College's academic program rests with its high quality faculty. The faculty-student ratio is 1 to 16, providing a close interpersonal relationship which may be observed in counseling experiences, freedom of academic exchange, a cordial "hello" while walking across campus and student-faculty associations on the athletic courts and during social events.

The library, occupied in November, 1964, provides an academic resource second only to the faculty. This air-conditioned facility adds considerably to the quality academic program offered by the college. Seating over 300 students, the library houses about 45,000 volumes, 3,000 recordings and music scores, 400 periodicals and over 700 microfilm reels.

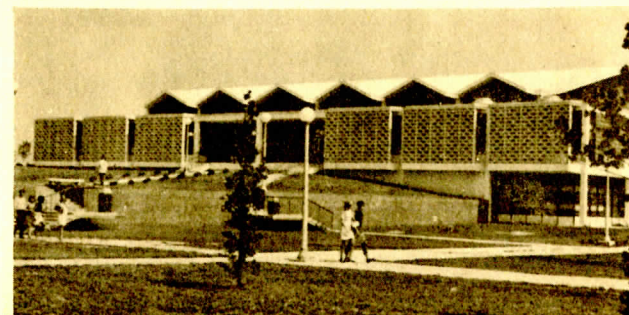


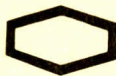
Your Educational Experience Includes Physical Development

The physical well-being of students is a part of the purpose to which Methodist College is dedicated. Athletics are, therefore, an integral part of the total educational experience.

Methodist College is a member of the Dixie Intercollegiate Athletic Conference with teams in baseball, basketball, bowling, cross country, golf, soccer, tennis and wrestling. The college is also a member of the National Association of Intercollegiate Athletics, District 26.

A strong intramural program for all students is carried on throughout the academic year. Four full-time faculty members direct the required physical education program for freshmen and sophomores. Through instruction in a variety of activities, this program provides the opportunity for sound development of the physical, emotional and social aspects of the individual.





Accreditation

Methodist College is a member of:

- The Southern Association of Colleges and Schools
- The North Carolina Association of Colleges and Universities
- The American Council on Education
- The Association of American Colleges

The college is approved by:

- The North Carolina Department of Public Instruction and State Board of Education for the in-service preparation of public school teachers.
- The University Senate of The United Methodist General Board of Education for the undergraduate training of ministers and Christian education workers.
- The American Association of University Women.



Financial Assistance

As its investment in the future leaders of our churches and communities, Methodist College offers scholarships, loans, tuition remission, campus employment and grants-in-aid as a supplement to the financial program of those students whose families, after some sacrifice, are unable to provide all the necessary funds. Information about financial assistance may be obtained by using the form below. Competitive scholarship examinations are given. Applicants who wish to take these examinations should request the dates on which they are scheduled.

For additional information and application forms, please complete and return the following form:

Name _____

Street _____

City _____ State _____ Zip _____

Field of Study
or Major Interest _____

Present School or College _____

Graduation Date _____

Yes, I am interested in Methodist College. Please send:

- Admissions Applications; Catalogue Campus Visitation Information; Financial Aid Application;
- Scholarship Examination Information

Send to: **Director of Admissions
Methodist College
Fayetteville, North Carolina 28301**



Admission Information

- 1—Applications should be submitted early in the fall of the senior year. A student may apply at the end of the junior year.
- 2—Methodist College operates on the "rolling admissions plan." Applications are processed as they are received.
- 3—Applicants must take the Scholastic Aptitude Test (SAT) or the American College Test (ACT).
- 4—The SAT scores, the high school record, and the recommendations of the Guidance Counselor or Principal are all considered as criteria for admission. A definite minimum cut-off point for the SAT has not been established.
- 5—The total cost per semester including room, board, tuition, general fees, health and activity fees is \$1050.00 for the resident student. For the day student the cost is \$550.00. (Academic year 1970-71)
- 6—A transfer student must submit a transcript of his high school record, SAT scores and a transcript of all college work attempted. Except in the case of a junior college graduate, he should be eligible to return to the college last attended. Methodist College gives full transfer credit, including quality points, for acceptable work completed at a former institution.
- 7—The college's enrollment of about 1000 is composed of students from all of the major religious denominations and faiths, from 17 states, and from 64 North Carolina counties.



Campus Visitation

We extend to you a cordial invitation to "come and see" Methodist College. Experience for yourself the well-balanced, educational program for spiritual, intellectual and physical development. High School seniors and transfer students interested in attending Methodist College and desiring to visit the campus should contact the Director of Admissions for further information.