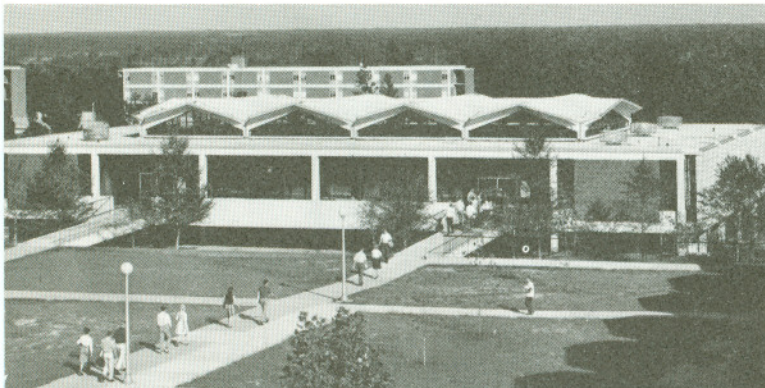


A Stimulating Atmosphere On A Contemporary Campus

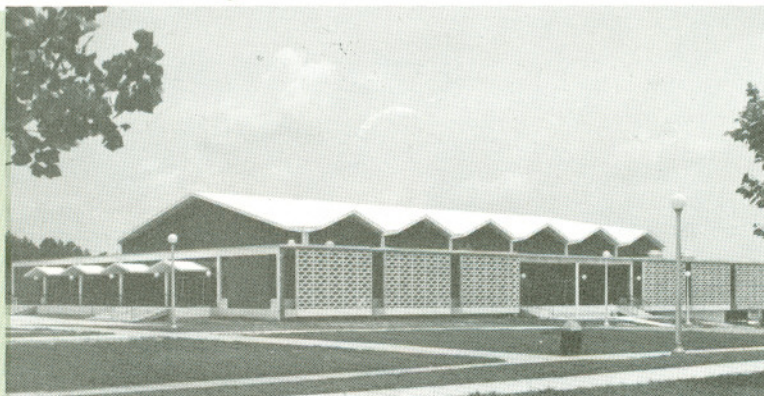
 *Student Union Cafeteria*



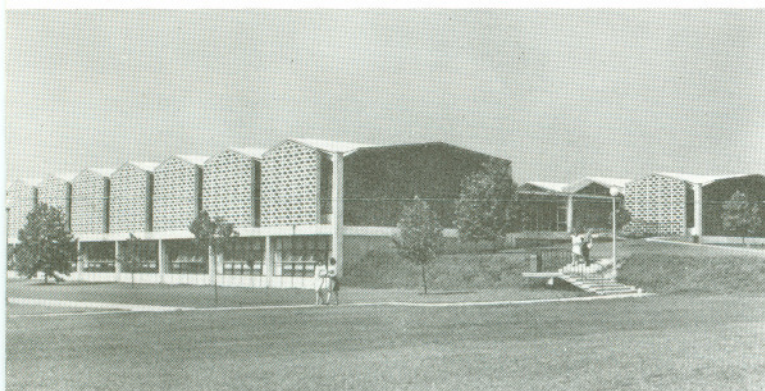
Methodist College is located five and one-half miles north of Fayetteville (population 53,000) in the Cape Fear Valley of North Carolina on a six-hundred-acre site between U. S. Highway 401 and the Cape Fear River.

With full realization of the part which adequate facilities contribute to the experience of learning, Methodist College has pressed forward with the construction and completion of seventeen out of the twenty-one structures projected for the campus.

 *Fine Arts Building-Auditorium*



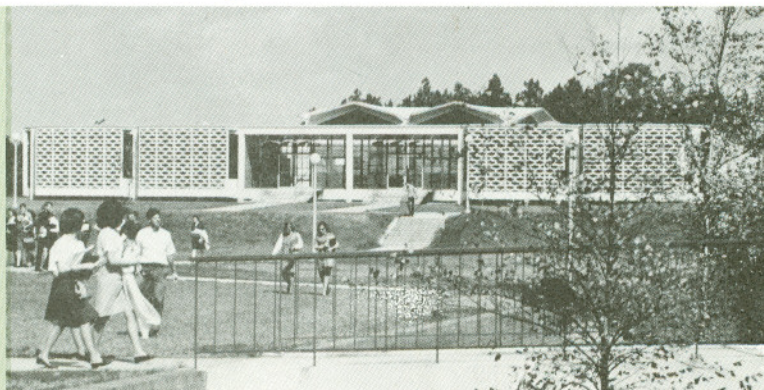
 *Classroom Building*



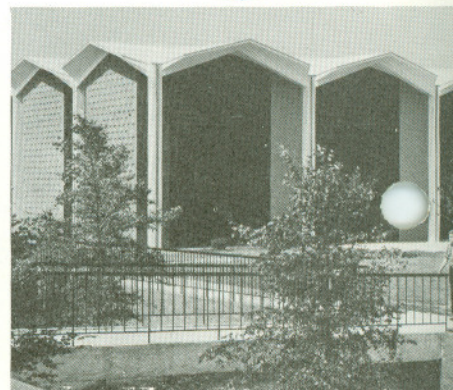
These units are designed and constructed along the lines of contemporary architecture providing an attractive, stimulating and challenging atmosphere.

The Fine Arts Building with a 1200-seat auditorium, the Administration Building, and an addition to the Student Union Cafeteria were completed in 1968. Priorities for construction of buildings beyond those now completed are: (1) Chapel; (2) Permanent Gymnasium; (3) Maintenance and Repair Building. It is anticipated that a major portion (if not all) of the construction on these will be completed within the next five years.

 *Science Building*



 *Library*





Architect's Projection, Central Mall Of Campus

Intellectual Development

Methodist College seeks to lead its students into intellectual maturity through a liberal arts program which emphasizes the humanities and basic sciences.

More than 200 courses are offered in seven areas of study. (1) English Language and Literature, (2) Religion and Philosophy, (3) Education and Psychology. (4) Science and Mathematics, (5) Social Science, (6) Fine Arts, (7) Foreign Languages.

Majors include:

Biology
Chemistry
English

French
History
Mathematics

Music
Religion
Spanish
Economics and Business Administration

Elementary Education
Sociology
Political Science

Minors include:

Art
Biology
Chemistry
Economics

English
French
History
Mathematics

Music
Philosophy
Physics

Political Science
Psychology
Religion

Secondary Education
Sociology
Spanish

Through its Teacher Education Program, the college prepares secondary teachers of English, French, Mathematics, Science, Social Studies, and special teacher of General Music.

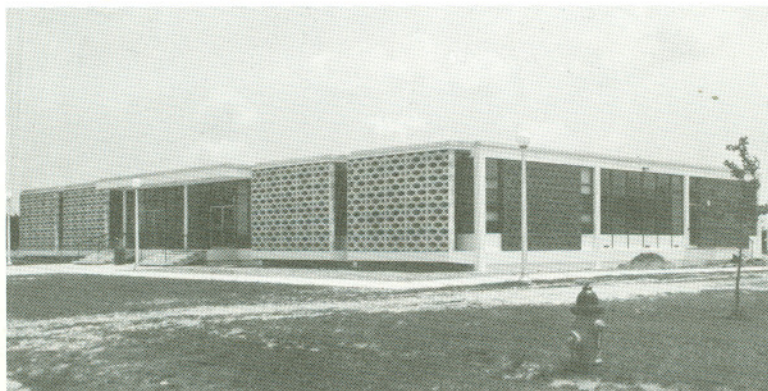
A "3-2" program in Engineering is available in co-operation with North Carolina State University.

No academic program, however, can be any stronger than the faculty which brings it to life. The strength of Methodist College's academic program rests with its high quality faculty. The faculty-student ratio is 1 to 16, providing a close interpersonal relationship which may be observed in counseling experiences, freedom of academic exchange, a cordial "hello" while walking across campus and student-faculty associations on the athletic courts and during social events.

The new library occupied in November, 1964, provides an academic resource second only to the faculty. This new, air-conditioned and modern facility adds considerably to the quality academic program being developed by the college.



Administration Building

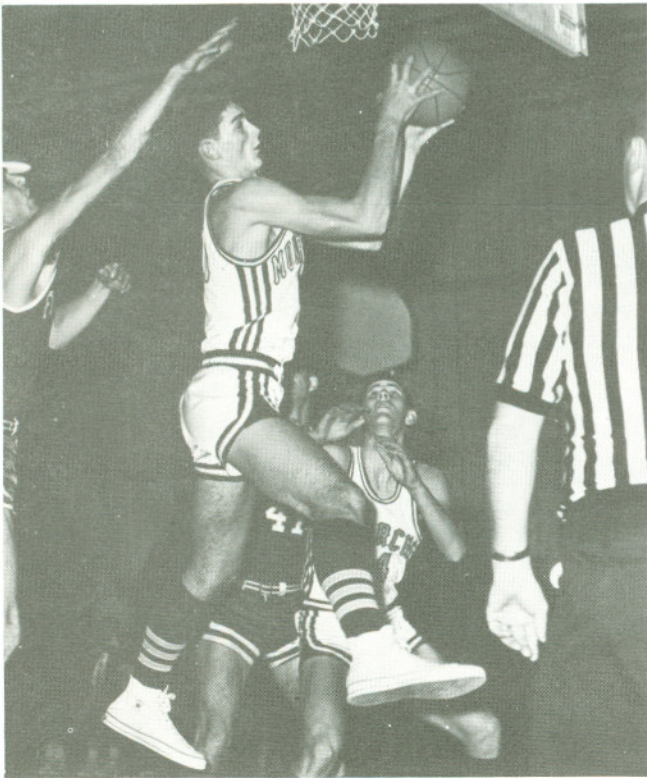


Physical Development

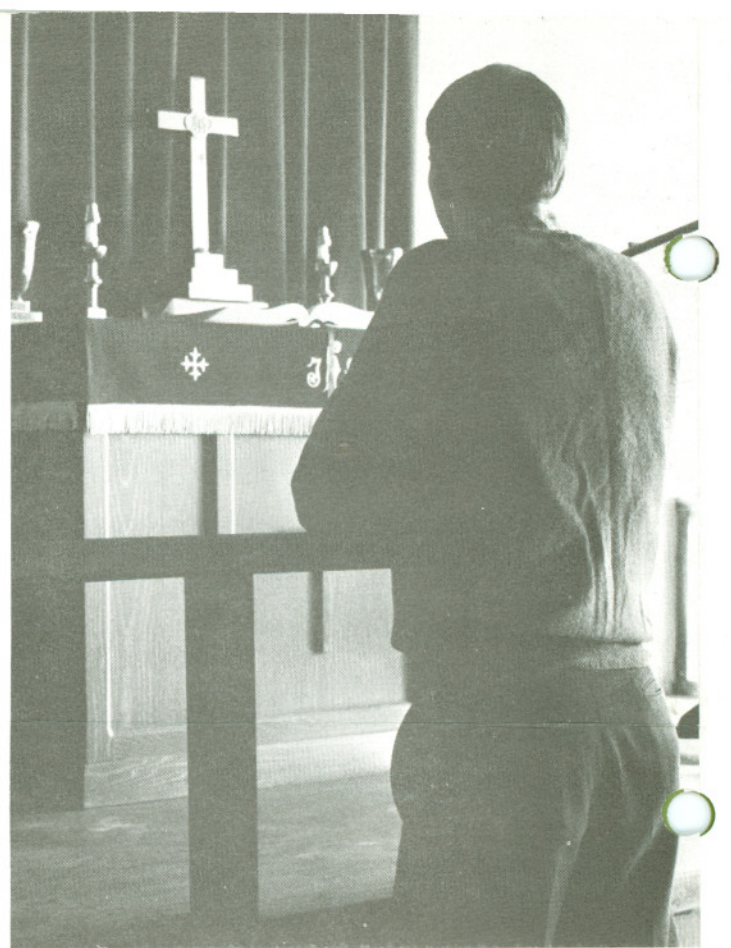
The physical well-being of students is a part of the purpose to which Methodist College is dedicated. Athletics are, therefore, an integral part of the total educational program.

Methodist College is a member of the Dixie Intercollegiate Athletic Conference with teams in baseball, basketball, bowling, cross country, golf, soccer, tennis and wrestling. The college is also a member of the National Association of Intercollegiate Athletics, District 26.

A strong intramural program for all students is carried on throughout the academic year.



Four full-time faculty members direct the required physical education program for freshmen and sophomores. Through instruction in a variety of activities, this program provides the opportunity for sound development of the physical, emotional and social aspects of the individual.



Spiritual Development

An extensive and well-balanced program of religious activities ministers to the moral and spiritual development of the student body. The chaplain of the college serves as director of religious life and coordinator of extra-curricular religious activities. In the latter capacity he is assisted by the Inter-faith Council, made up of representatives of the various student denominational groups on campus. At present there are six such groups which are active. Each has a faculty sponsor. Other groups may be formed as the need arises.

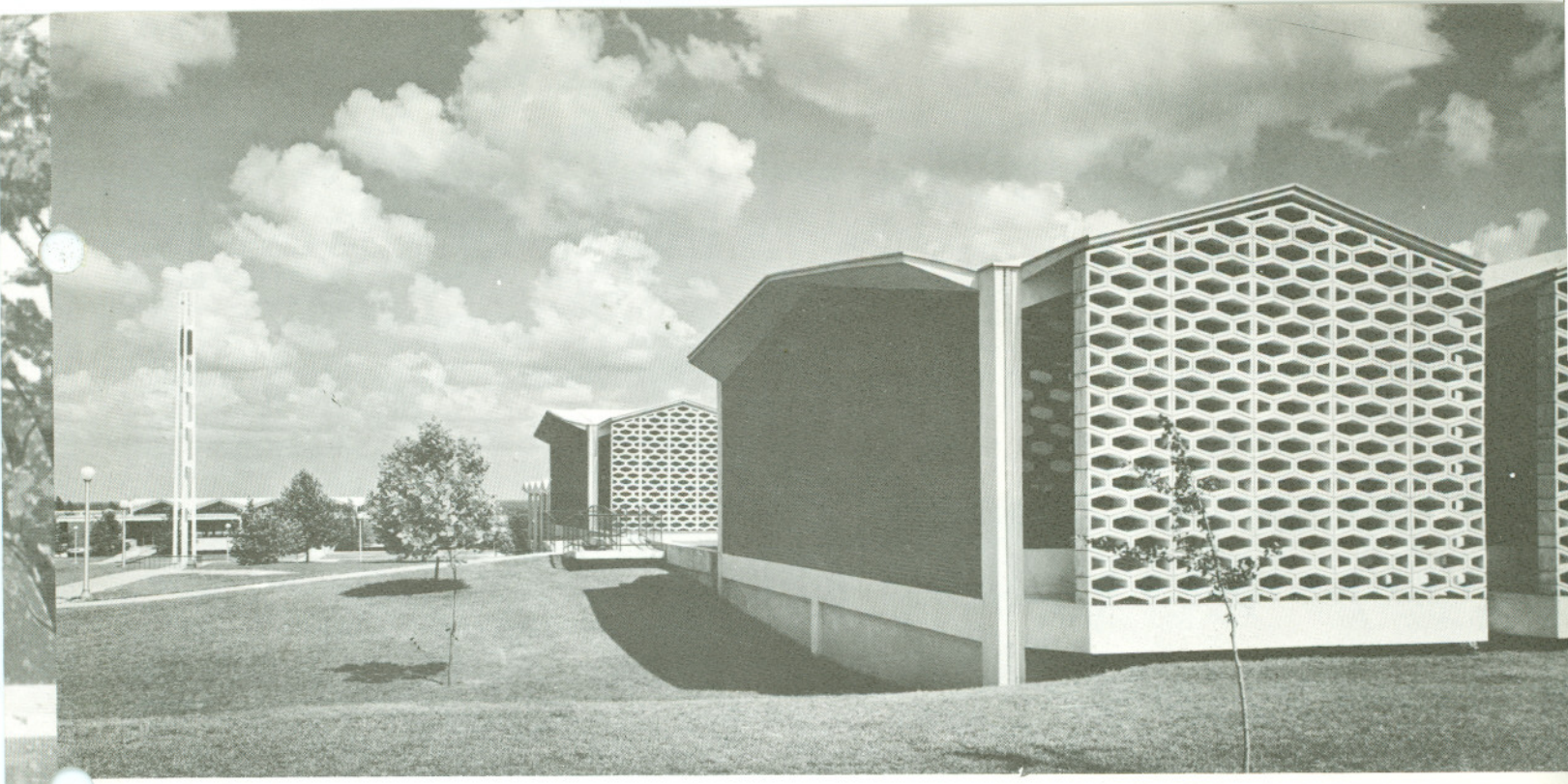
During the academic week the student body and faculty convene for a thirty-minute chapel, at which attendance is required. Guest speakers at chapel programs include ministers from the Fayetteville and eastern Carolina area representing the various religious denominations with which students are affiliated. Outstanding denominational lay leaders or officials are also invited to appear. The president of the college, the chaplain, and other members of the faculty are regularly scheduled as chapel speakers.

On Sunday students are encouraged to attend morning worship services at community churches of their own denomination, or services on campus of an interdenominational type. An opportunity for worship, discussion and fellowship is also provided on Sunday evening.

On special occasions designed by the president of the college, convocations are held for both the college community and for friends of the college who desire to attend.

The annual observance of Religious Emphasis Week is a major highlight of the college year. Outstanding religious leaders are invited as speakers and counselors for several days of highly concentrated activity planned jointly by the chaplain and the Inter-faith Council.





ANSWERS TO QUESTIONS ABOUT METHODIST COLLEGE

Admission Information

- 1 — Applications should be submitted early in the fall of the senior year. A student may apply at the end of the junior year.
- 2 — Methodist College operates on the "rolling admissions plan." Applications are processed as they are received.
- 3 — Applicants must take the Scholastic Aptitude Test (SAT) or the American College Test (ACT).
- 4 — The SAT scores, the high school record, and the recommendations of the Guidance Counselor or Principal are all considered as criteria for admission. A definite minimum cut-off point for the SAT has not been established.
- 5 — The total cost per semester including room, board, tuition, general fees, health and activity fees is \$900.00 for the resident student. For the day student the cost is \$450.00.

- 6 — A transfer student must submit a transcript of his high school record, SAT scores and a transcript of all college work attempted. Except in the case of a junior college graduate, he should be eligible to return to the college last attended. Methodist College gives full transfer credit, including quality points, for acceptable work completed at a former institution.
- 7 — The College's enrollment of over 1000 is composed of students from all of the major religious denominations and faiths.

Financial Assistance

As its investment in the future leaders of our churches and communities, Methodist College offers scholarships, loans, tuition remission, campus employment and grants-in-aid as a supplement to the financial program of those students whose families, after some sacrifice, are unable to provide all the necessary funds. Information about financial assistance may be obtained by using the form on this page.

Competitive scholarship examinations are given. Applicants who wish to take these examinations should request the dates on which they are scheduled.

Campus Visitation

We extend to you a cordial invitation to "come and see" Methodist College. Discover for yourself the well-balanced program for intellectual, spiritual and physical development. High School seniors and transfer students who are interested in attending Methodist College and desire to visit the campus are invited to contact the Public Relations Office for further information.

**Public Relations Department
Methodist College
Fayetteville, North Carolina 28301**

Name _____

Street _____

City _____ State _____ Zip _____

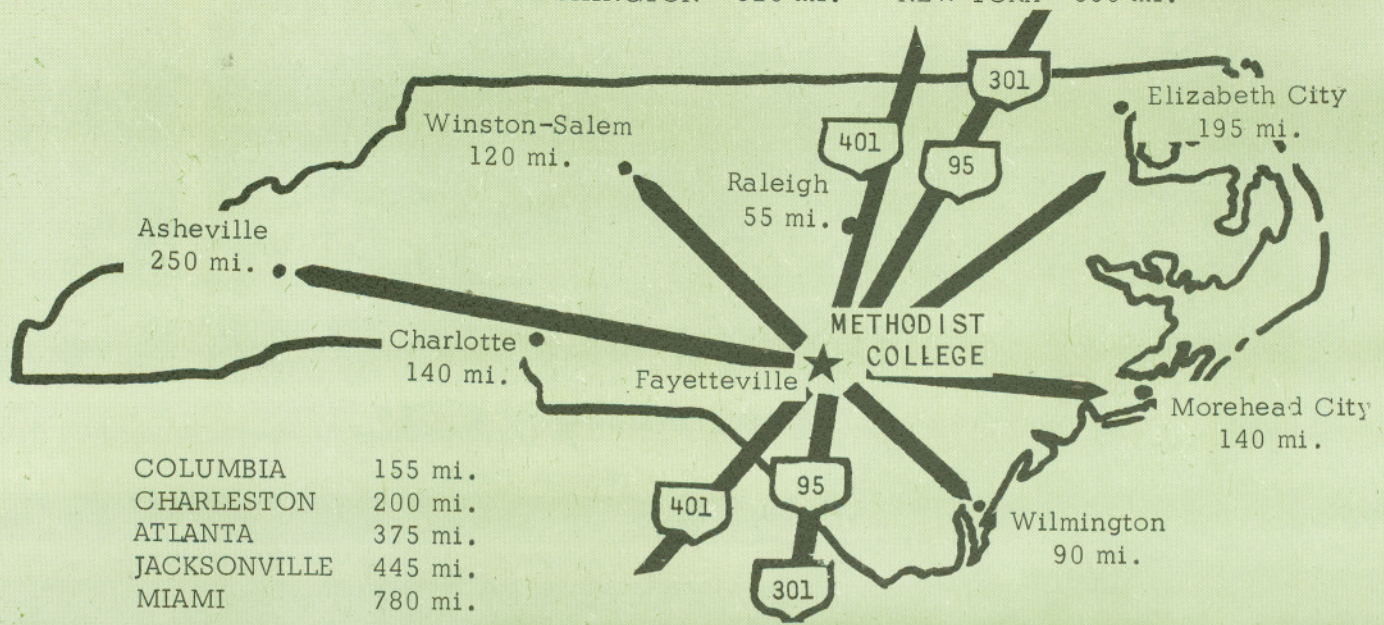
Subject or Major Interest _____

Present School or College _____

Graduation Date _____

- I am interested in Methodist College. Please send:
- Admissions Application
 - Catalogue
 - Campus Visitation Information
 - Financial Aid Application
 - Scholarship Examination Information

RICHMOND 215 mi. -- WASHINGTON 320 mi. -- NEW YORK 550 mi.



BULLETIN OF

Methodist College

Fayetteville, North Carolina 28301

Vol. 9, No 6

September, 1968

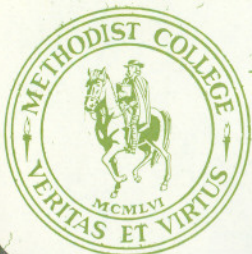
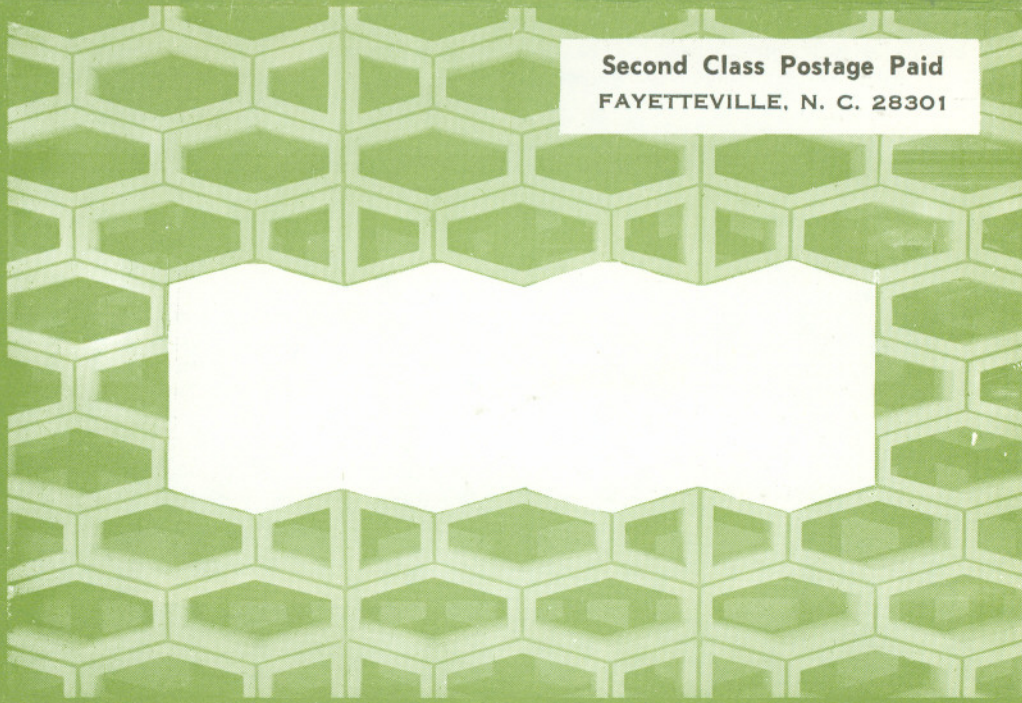


Published Semi-Quarterly

By

Division of Public Relations

Second Class Postage Paid
FAYETTEVILLE, N. C. 28301



Liberal Arts Co-educational Senior College

